

# PINE MOUNTAIN LAKE NEWS

JANUARY 2015



FIFTY CENTS

THE OFFICIAL NEWSPAPER OF PINE MOUNTAIN LAKE PROPERTY OWNERS

## TABLE OF CONTENTS

Administration	2-11, 15
The Grill	14-15
PML Clubs/Activities/ Recreation	15-17
Events Calendar	18
<i>Homes on the Hill</i>	
Real Estate	19-26
Community Corner	27-31 34-37
School News	38
Home Improvement	
Directory	39-42
Classifieds	43

PRSR7 STD  
U.S. POSTAGE  
PAID  
Permit 451  
STOCKTON, CA  
Change Service Requested

19228 Pine Mountain Dr. Groveland, CA 95321

THE PINE MOUNTAIN LAKE ASSOCIATION  
WISHES YOU AND YOURS

*Happy New Year*



**MOST OFTEN  
VIOLATED CC&Rs**  
SEE PAGE 5

**BARK BEETLE  
TREE DEATH**  
SEE PAGE 5

**2015 ASSESSMENT  
BUDGET PACKETS  
MAILED DEC. 1**  
SEE PAGE 8

**PML JOB FAIR**  
SEE PAGE 11



**EAGLES SPOTTED HUNTING ON PML**



The Pine Mountain Lake News, established July 25, 1973, is printed monthly for residents of Pine Mountain Lake and vicinity by Pine Mountain Lake Association, Groveland, California 95321.

#### SUBSCRIPTION RATES:

Co-owner subscription: \$3 per year  
Single copies: 50 cents each  
Single mailed copies: \$1.35 each  
For non-members: \$10 per year

#### SUBMISSION DEADLINE 10th of the month by 4:30 PM

Late submissions not accepted

Visit [www.pinemountainlake.com](http://www.pinemountainlake.com) for ad rates and submission guidelines or e-mail: [PMLNews@SabreDesign.net](mailto:PMLNews@SabreDesign.net). For the mutual benefit of all property owners, the Pine Mountain Lake News reserves the right to edit all copy submitted for publication. The Pine Mountain Lake News is a private enterprise, not a public entity, and as such is entitled to reject advertisements or articles in the best judgment of its editor or publisher, despite a probable monopoly in the area of its publication. Pine Mountain Lake Association is not responsible for, nor does it guarantee the accuracy of, information contained in any ad placed in the Pine Mountain Lake News.

#### SABRE DESIGN & PUBLISHING Design/layout

DAVID WILKINSON  
Publishing Editor

CHRISTINA WILKINSON  
Associate Editor

#### PINE MOUNTAIN LAKE NEWS

P.O. Box 605  
Groveland, CA 95321  
Tel: 209/962-0342  
Fax: 800/680-6217

E-mail:  
[PMLNews@SabreDesign.net](mailto:PMLNews@SabreDesign.net)

#### BOARD OF DIRECTORS

Jerry Dickson (President)  
Mike Gustafson (Vice President)  
Wayne Augsburger (Secretary)  
Dana Chavarria (Treasurer)  
Brian Sweeney (Director)

#### GENERAL MANAGER

Joseph M. Powell, CCAM, CMCA, AMS

#### CORRESPONDENCE TO DIRECTORS

Pine Mountain Lake Association  
19228 Pine Mountain Drive  
Groveland, CA 95321  
[PMLABoard@pinemountainlake.com](mailto:PMLABoard@pinemountainlake.com)

#### ADMINISTRATION OFFICE HOURS OF OPERATION

Monday - Friday 8:00 AM - 4:30 PM  
Tel: 209/962-8600

## President's Corner

BY JERRY DICKSON • PMLA BOARD PRESIDENT

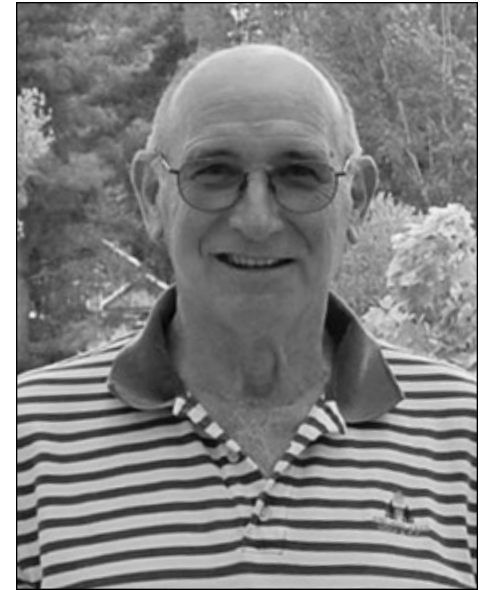
Well 2014 was a great year but is now in the rear view mirror and members have received their assessment packages for 2015. That bill is now due and payable. I'd like to take this space to explain the 2015 budget and how it is constructed compared to the previous year.

Our assessments increased 4.3% or \$7 per month. Let me break this down to show you how that \$7 came to be. First of all about \$1 is due to the mergers reducing the denominator with which we divide the total budget. \$2 is the result of the cancellation of our burn permit at the compost/burn site area. Our staff is investigating other options, but for now, we will have to hire an outside contractor to grind up the material. Grinding is much more expensive than burning. About \$2.25 of the increase was due to insurance premiums of many kinds to protect our Association. The last major contributor to the change is about \$3.50 for salary increases for our employees. I can tell you that The Grill and The Golf Course operation contributed essentially nothing to the assessment increase. Now you are going to tell me this adds up to more than \$7 and you are correct, but I have answer for that. In 2014 we performed better than budget and brought forward about \$3 to use in the 2015 budget. I hope this gives you a high level perspective on the year-to-year changes in our assessments.

The one significant discretionary item we

put in the budget was a second contribution to our capital improvement fund for a surveillance camera system. As we all know, PML is comprised of more than 3,000 acres and common areas and access points are spread out in remote locations. The plan is to deploy surveillance systems at many of our access gates and public areas. This was not mentioned in the previous paragraph as this expenditure wasn't an increase. It was the same amount we included in the 2014 budget. The amount is about \$2.50 per month to each individual assessment. We now have enough to start the first two phases of the project. Four phases will be necessary to complete the project. Your Board expects to include additional funding for future budgets for two or three more years beyond 2015.

We also have a significant change for The Marina. As many of you know we used to have inflatable water trampolines in the designated swim area. The cost of purchasing, maintaining and repairing the inflatables and on-going vandalism caused staff and the Board to rethink this activity. As a result of a lot of discussion and debate, the Board decided to replace these units with a large swim platform. The planned design will include water slides and the structure will be strong enough to handle a larger number of individuals and staff. To ensure that member and guest safety is our first consideration, we will be staffing this area. We believe the new swim platform will be fun for all.



Jerry Dickson, PMLA President

## HOURS OF OPERATION

Please note the hours of operation for the following amenities:

### COMPOST & ARCHERY RANGE

NOVEMBER THRU MARCH  
TUESDAY THRU SATURDAY  
8AM TO 4PM  
WEATHER PERMITTING

### SHOOTING RANGE

TUES, THURS, SAT  
9AM TO 3PM

**PLEASE NOTE** Hours may vary depending on weather conditions, safety concerns, or other situations beyond control. Archery and Gun Range users must check-in with compost attendant.

**HOURS SUBJECT TO CHANGE  
WITHOUT NOTICE.**

**Call the Main Gate  
at 209-962-8615.**

## On the Cover



The PMLA & the PML News would like to wish everyone a very Happy New Year.

(Inset Photo) On the morning of December 10th Dick & Dotty Davis looked across the lake to see two bald eagles trying to catch a coot for "breakfast". The couple said that, "They worked together as a team and finally they caught the coot." Thank you Dick & Dotty for sending in the great photo.

# General Manager's Message

BY JOE POWELL, CCAM, CMCA, AMS, GENERAL MANAGER

## Update on the PML Compost/Slash Burn Site

Yes! our Compost Site is still open! Our Maintenance Manager, Tom Moffitt asked me to convey this to the membership. Apparently, a rumor has been circulating that the site was shut down. Members may still bring their green waste/brush and slash to the PML Compost Site. Please see the PML Website and area signage for hours of operation and more information.

In my article last month, I touched on the challenges of maintaining our compost site near the Campgrounds due to smoke complaints by neighboring members. The main point of the article is that there can be a detrimental financial impact to the Association when members file complaints with the County and other agencies. In this case, additional funding through our assessments that is absorbed by all members.

Our Compost Site burn permit was suspended by the County due to the number of complaints received by the APCD (Air Pollution Control District). As a result, PML provided funding in the 2015 budget to use non-burning methods to dispose of the material. Rather than complain to the County that we felt we got short-changed by the decision, we set up a time to meet with County staff to come up with a solution that works for everyone. To that end, my staff and I have been working with the County APCD

and investigating other alternatives to open-air burning.

We encourage members to try and resolve their issues directly with PML in a positive way, rather than filing complaints. Many members file complaints without taking the time to talk to us first and getting the correct information. As an example, there have been several days this year that smoke has drifted into PML. Some members just assumed that PML staff was creating the smoke. It turned out to be a prescribed burn conducted by Cal Fire staff on Highway 120. PML was not engaged in any burning that day.

There is no shortage of ideas for improvements to the Compost Site. The first idea proposed was moving the site further back and up into our Unit 16 property. The downside to this idea is that it would require a significant amount of capital funding to improve the infrastructure and build a suitable location to accept the material.

Another issue is that the site would have to be located almost 2 miles away from the current location. This would require more labor to man the burn site and it would be inconvenient for members and vendors to travel that much farther uphill to the site.

Lastly, we could still receive smoke complaints when the wind direction changes. No amount of control over the

fire could stop the likelihood that members would complain. We cannot recommend making such a large investment in moving the site if there is a chance we would again receive a suspension of our burn permit.

Some members who read my last article came up with other suggestions to resolve the smoke complaint issue. Some were interesting, and others cannot be repeated in this type of public forum. Regardless, we appreciate the input.

We have not given up and we are investigating the viability of other alternatives. There is a new technology and piece of equipment that allows material to be burned with almost no smoke escaping from its burn chamber.

We are also looking at other ways to compost the material so that it has enough value that we can sell the end product to help reduce our costs. We are considering partnerships with vendors who process material into a usable, clean, organic compost. All of this takes time, but in the end the time and effort should result in a viable solution. Hopefully the effort will translate into a reduction in our operational costs for this site.

On a personal note, I recently read a quote attributed to Mahatma Gandhi: "You must be the change you wish to see in the world." That is going to be my new year's resolution.

Happy New Year!

## Submission Guidelines

### The PML News is the Official Newspaper of Pine Mountain Lake Property Owners

The PML News is dedicated to reporting PML Association business and PML Association news to Pine Mountain Lake Property Owners.

The PML News receives more than 100 Tuolumne County/Groveland community related submissions each month. All such community related articles and notices will appear in the PML News on a SPACE AVAILABLE basis and at the DISCRETION of the PML News Publishing Editor.

#### DEADLINES

Advertisements must be received IN FULL (text, MLS info, images, logos, etc.) by the 10th of the month for the following month's edition. Only advertisements received in full will be guaranteed to be published in that month's edition. NO EXCEPTIONS.

#### MEDIA ACCEPTED

email

#### SOFTWARE

InDesign, Microsoft Word, Photoshop, Illustrator or PDF.

#### TEXT/GRAPHICS

Handwritten text is not accepted. Material composed completely of capital letters is not accepted. Please use uppercase and lowercase letters in composition. Ink jet printed images are not accepted. Images are accepted ONLY as camera ready art, original photos (to be scanned) or as JPEG, TIFF or PDF files created with above listed software. All scans and bitmap images must be in TIFF or JPG format at least 200 dpi at 100% (300 dpi preferred). Ad files are stored for 90 days from first run date. Older ads that have not been running must be resubmitted. (See Display & Insert Advertising Contract "Design and Preparation Charges.")

#### E-MAIL TEXT/GRAPHICS

Text/graphics may be delivered as e-mail attachments via the Internet. Send to [pmlnews@sabredesign.net](mailto:pmlnews@sabredesign.net).

#### AD DESIGN and PROOFS

Ads that are requested to be sent to other periodicals require a usage fee from the advertiser (see Display & Insert Advertising Contract "Design and Preparation Charges"). Proofs are available upon request and final proof approval for all ads is expected within 24 hours. Changes made are LIMITED to typographical or graphic placement errors. NO OTHER ADDITIONS OR CHANGES WILL BE MADE.

#### SUBMISSION DEADLINES

Articles — 10th each month  
 Ads — 10th each month  
 Classifieds — 15th each month

## NOTICE

The Pine Mountain Lake News, established July 25, 1973, is printed monthly for residents of Pine Mountain Lake and sold in the Groveland, CA 95321 area. Members can access the PML News monthly edition online at [www.PineMountainLake.com](http://www.PineMountainLake.com). Every month the newest edition of the PML News is posted online before the first of each month. Interested parties can subscribe to the traditional "hard copy" and receive a copy by mail each month.

The PML News is mailed to approximately 3500 PML property owner households each month. Up to 500 copies are rack-sold in the local Groveland area. Our circulation reaches approximately

1200 full-time, resident, PML property owners and approximately 2300 "weekender," non-resident, property owners who maintain primary residence in Northern California, in Southern California, or in other states. For more information regarding the PML News, please call the PML Administration Office at (209) 962-8600. We greatly appreciate your contributions but please note that the PML News fills up very quickly — often by the 7th or 8th of the month (long before the 10th deadline). To ensure that your submission is reviewed for publication please submit in full and as early as possible. Please remember that the PML News is limited in capacity and your

submissions are reviewed on a first-come-first-served, space-available basis.

We publish all PMLA related submissions such as Board & Management Business, Clubs, Activities & Events. Where space remains, we publish non-PMLA related submissions in our "Community" section.

We do our best to provide timely news. If you experience delayed delivery or have misplaced a particular edition, please visit us at the PMLA website [www.pinemountainlake.com](http://www.pinemountainlake.com) for a downloadable PDF of the News posted by the 1st of the month and a downloadable PDF list of ad rates.

## DID YOU KNOW?

**California law requires headlights to be turned on whenever there's "inclement weather."**

*California Vehicle Code, Section 24400: "A motor vehicle, other than a motorcycle, shall be operated during darkness, or inclement weather, or both, with at least two lighted headlamps..."*

**"Inclement Weather" is defined as:**

(1) Any condition that prevents a driver of a motor vehicle from clearly discerning a person or another motor vehicle on the highway from a distance of 1,000 feet.

And/Or

(2) A condition requiring the windshield wipers to be in continuous use due to rain, mist, snow, fog or other precipitation or atmospheric moisture.

So be sure to turn on your headlights anytime any of the conditions above are present. Be safe.

**VISIT US ONLINE!**  
[www.pinemountainlake.com](http://www.pinemountainlake.com)



**PINE MOUNTAIN LAKE**  
**209/962-8600**  
*www.pinemountainlake.com*

**ADMINISTRATION OFFICE HOURS**  
**8:00AM TO 4:30PM – MON THRU FRI**  
**OPEN AT 8:45AM SECOND TUES OF EACH MONTH**

**PAY PHONE LOCATIONS**

In an emergency, call 911

- Campground (restrooms)
- Dunn Court Beach
- Lake Lodge

Press \*81 on any Pay Phone to contact Main Gate.

- Main Gate (restrooms)
- Marina
- Stables
- Tennis Courts (Pine Mountain Drive)

**General Info** 209/962-8600  
 Renee Strmiska *admin@pinemountainlake.com*

**Main Gate** 209/962-8615  
 General Safety Inquiries, gate passes,  
 campground reservations, tennis reservations  
*campground@pinemountainlake.com*

**Accounting** 209/962-8607  
 Receivable/Collections/Assessments  
 Karen Peracca *pmlar@pinemountainlake.com*

**Accounts Payable** 209/962-8626  
 Ashley Jackson *pmlap@pinemountainlake.com*

**Controller** 209/962-8606  
 Accounting Procedures  
 Ken Spencer *controller@pinemountainlake.com*

**ADMINISTRATION**  
**General Manager**  
 Joseph Powell *joepowell@pinemountainlake.com*

**Administrative Asst. to G.M.** 209/962-8627  
 Debra Durai *debra@pinemountainlake.com*

**Assistant to G.M.** 209/962-8604  
 Ivonne Deckard *ideckard@pinemountainlake.com*

**Human Resources** 209/962-8628  
 Allie Henderson *pmlhr@pinemountainlake.com*

**E.C.C. Coordinator** 209/962-8605  
 Plan Submittals, Compliance Fees, Mergers  
*ecc@pinemountainlake.com*

**Member Relations** 209/962-8632  
 Gate Cards, Address Changes  
 Terri Thomas *pmlmr@pinemountainlake.com*

**Community Standards Dir.** 209/962-1240  
 CC&R Compliance/Violations/Fire Mitigation  
 Dennis Pipal  
*communitystandards@pinemountainlake.com*

**DEPARTMENT OF SAFETY**  
**Director of Safety** 209/962-8633  
 Natalie Trujillo *n.trujillo@pinemountainlake.com*

**Sergeant** 209/962-1244  
 Sgt. Teri Cathrein *t.cathrein@pinemountainlake.com*

**MAINTENANCE DEPT** 209/962-8612  
 Susan Capitanich *maintenance@pinemountainlake.com*

**Maintenance Manager** 209/962-8611  
 Tom Moffitt *tmoffitt@pinemountainlake.com*

**GOLF COURSE**  
**Golf Course Superintendent** 209/962-8610  
 Alan MacDonald *amacdonald@pinemountainlake.com*

**Golf Shop** 209/962-8620  
 Golf Pro Shop/Golf Reservations  
 Doug Schmielt *dschmielt@pinemountainlake.com*

**Golf Pro** 209/962-8622  
 Mike Cook *golfpro@pinemountainlake.com*

**THE GRILL AT PINE MOUNTAIN LAKE**  
**Restaurant** 209/962-8638  
 Bambi Johnson *cluboffice@pinemountainlake.com*

**The Grill Manager** 209/962-8640  
 Jay Reis *clubmgr@pinemountainlake.com*

**Head Chef**  
 Carrie Taylor *kitchen@pinemountainlake.com*

**19th Hole Lounge** 209/962-8636  
 Jamie Wortmann  
*19thholelounge@pinemountainlake.com*

**OTHER PHONE NUMBERS**  
**Stables Manager** 209/962-8667  
 Jeanna Santalucia *stables@pinemountainlake.com*

**PML News** 209/962-0342  
 Pine Mountain Lake News  
 Sabre Design & Publishing *PMLNews@SabreDesign.net*

**ADMIN OFFICE HOLIDAYS 2015**

(ADMIN OFFICE WILL BE CLOSED)

- THURS 1/1 NEW YEAR'S DAY
- FRI 1/2 THE DAY AFTER NEW YEARS
- Mon 2/16 President's Day
- Mon 5/25 Memorial Day
- Fri 7/3 Independence Day
- Mon 9/7 Labor Day
- Wed 11/11 Veterans' Day
- Thurs 11/26 Thanksgiving
- Fri 11/27 Day After Thanksgiving
- Thurs 12/24 Christmas Eve
- Fri 12/25 Christmas Day
- Thurs 12/31 New Year's Eve
- Fri 01/01/16 New Year's Day

**UPCOMING SCHEDULE OF BOARD MEETINGS**

Meetings are held at the PML Lake Lodge and start at 9 AM. (Unless otherwise noted)

**JANUARY 17, 2015**

February 21, 2015

March 21, 2015

April 18, 2015

May 16, 2015

June 20, 2015

July 18, 2015

August 15, 2015  
 ANNUAL MEETING / ELECTION

September 12, 2015  
 (2ND SAT-DUE TO 49ER FESTIVAL)

October 24, 2015  
 BUDGET MEETING (4TH SATURDAY-BEGINS AT 8 AM)

November 14, 2015  
 (2ND SATURDAY)

No December Meeting

**Subscribe to the Pine Mountain Lake News TODAY!**

Name \_\_\_\_\_

Unit \_\_\_\_\_ Lot \_\_\_\_\_

Mailing Address \_\_\_\_\_

\_\_\_\_\_

\_\_\_\_\_

\_\_\_\_\_

**NO CHARGE for PROPERTY OWNERS (bulk)**  
 \$3/year for Co-Owners (bulk);  
 \$10/year for Non-Property Owners (bulk)  
**\$18/year for PROPERTY OWNERS (1st class)**  
 \$28/year for Non-property owners (1st class)

Enclosed is my check in the amount of \$ \_\_\_\_\_ (PAYMENT DUE IN FULL)

**Send this subscription to:**  
 Pine Mountain Lake Association  
 19228 Pine Mtn. Dr. Groveland, CA 95321  
 ATTN: TERRI

**PINE MOUNTAIN LAKE NEWS DELIVERY**

Although we guarantee that the PML News is mailed from Modesto, CA on the same day (between the 26th-30th of month), most post offices (except Groveland) sort Bulk Mail after First Class mail. So, consider a First Class delivery subscription for just \$18/yr? (\$18 per year for property owners and \$28 per year for non-property owners) Interested? Call the PMLA Office at 209/962-8632 or see form above.

NOTE: The Pine Mountain Lake News is also available (in pdf format) at: *www.pinemountainlake.com*. New editions are posted by the 1st of the month.

**RULES ENFORCEMENT ACTIONS**

**Violations Report – November 2014**

Courtesy Notices	10
Notice of Non-Compliance	4
Fines	0
Violations Pending	72

# Happy New Year!

From the Pine Mountain Lake News & the PMLA Staff

## Community Standards

BY DENNIS PIPAL, COMMUNITY STANDARDS DIRECTOR

This month I want to address the CC&R's. These are the comprehensive documents by which an association is governed.

I spend most of my time in Article's 7 and 8 which dictate member responsibilities. These are things you can't do, or in the alternative, things you must do, if you are going to be in compliance with our governing documents.

Below are some of the most common violations.

### Article 7, Section 2 – Owner Maintenance Responsibility

Each Owner must keep and maintain their Lot in good repair, including landscaping.  
*Special Note: dead trees & their removal, structure upkeep*

### Article 8, Section 1 – Use of Lots

(a) no storage of any kind on vacant Lots  
(c) maintained so as not to be unsightly  
(e) no temporary structures (soft sided tents used for covering autos, boats, etc  
(k) removing trees greater than 5" without approval from association

### Article 8, Section 4 – Prohibition of Noxious Activities

No unreasonable annoyance or nuisance to neighbors (noise), barking dogs, loud music, loud parties, as examples

### Article 8, Section 6 – Household Pets

Leash law, no loose dogs in the Common Area  
Responsible for pets conduct (ex: nuisance barking)

### Article 8, Section 9 – Garbage

No accumulation of trash allowed  
Storage must be in appropriate containers screened from view from the street except on pickup days.(exception: garbage can holders constructed at the street)

### Article 8, Section 10 – Storage

Personal property must be stored in enclosed storage areas, not out in the open

### Article 8, Section 15 – Parking and Vehicle Restrictions

(a) Street licensed vehicles only, no go carts, dirt bikes, dune buggies, or quads

(c) no dilapidated or inoperable vehicle, or parts can be stored on Lots except for emergency repairs (example: changing a tire)

There you have it. 99% of all violations occur in the foregoing sections of our CC&R's. Feel free to call at (209) 962-1240 if you have any questions.

And in closing, and on a well-worn topic, can we talk about Lot ID again? Just do this. Pretend you are a fireman or ambulance driver who is trying to find your house at 2 am in response to a 911 call. It's pitch black and they are looking for a street number or unit and lot number. How easily and quickly will they find your house? Sometimes... seconds count.

That's why I like those green and white reflective signs made by the Tuolumne County Sheriff's Community Service Unit. They are inexpensive and really show up at night when they are needed the most. The order forms are at [pinemountainlake.com/firesafety](http://pinemountainlake.com/firesafety)

And the location of your sign? We have a variety of different types of Lots and their vehicle access point varies. The best location for your ID sign is by the access point to your house. This is where the emergency vehicle can get to you the quickest. Sometimes it's a driveway. Sometimes it's an easement road. I see some of the craziest locations for ID signs because they have no relationship to where your house is. They are virtually worthless when it comes down to the main reason you need a Lot ID sign.... EMERGENCY!!!

Take a look at your location - at the street by your access point for vehicles is best. Then take a look at your visibility. If it's hidden, broken, 100 yards off the street, weather worn - all of these put you at risk.

You can still have your artsy sign with your name and address engraved. But honestly, these don't show up very well at night so they aren't that effective for emergency purposes. And many of these have been up for so long they need to be refurbished due to weather wear and tear. Do yourself a favor. Check your signing and give it a critical eye. You may be happy you did.

## Bark Beetle Tree Death and the Removal of Dead Trees

BY TOM MOFFITT, MAINTENANCE MANAGER

The practice of removing dead trees within Pine Mountain Lake Association is an ongoing process. Trees are identified and investigated, the dead trees are removed. This has been a joint process with property owners and Pine Mountain Lake Association for decades. The practice reduces fire danger, promotes public safety, forest health, and contributes to the general enhancement of the association.

The damages to the conifer trees (pines and cedars), by bark beetles, has been a usual problem in the area. I say usual, not to be taken lightly, yet, we do have a rather constant rate of tree damage and death. Lately, we are now seeing entire stands of conifers being attacked and dying. The incidences are a bit random, but, they are associated, and investigated. The drought conditions and the Rim Fire aftermath has accelerated the working conditions for the invasive bark beetle.

Within the PML greenbelts, we had been seeing tree death at a ratio of 1 tree in 20 acres. These are trees which are clearly dead, with normal conditions within a 5 year period. We have built a historical data base since we adopted a forest management plan for fire safety in 2008. Dead trees can be plotted, mapped, and the problem cited. The current tree deaths can be directly associated with bark beetles by the evidences at hand. Tree deaths are also related to tree shock, disease, damages, drainage, environmental problems, some are drought related, and yet many pines are damaged by bark beetles.

The bark beetles are invited by the distressed tree. It is the natural cycle of the forest. The forest is thinned, weak and aged trees are infested, the signs of brown needles become evident, and the tree death is quickly evident when the entire tree is brown. The evidences are usually seen much too late in the cycle, and the tree is already terminal. Many conifer trees may tolerate the insects and endure for many years. The evidences of the bark beetles can be evaluated, the trees left alone, treated or removed. Evidence to support the migration of the bark beetles form a stressed tree to a healthy tree, just

because it is adjacent, does not mean the tree will be killed. The beetles may travel a good distance to get to a host tree, leaving many healthy trees which are able to fight off the beetle attack alone. A healthy tree may ward off the beetle attack and survive, while other adjacent trees perish.

The drought conditions have left many conifers with a weakened immune system. In some leeward slopes there are large stands of dead trees which have been killed by bark beetles. The dead trees in the greenbelts are felled and removed in the later season of the year, usually in the winter months, the dormant season for trees. Trees which are a safety problem are removed with expedience and due diligence. Some dead trees remain in the forest as polished cardinal snags; some are felled to become habitat.

A lasting remedy for our pine forest health is the soils water retention abilities. Pine trees require 100 gallons of water a day to remain healthy, and the recent drought conditions have left our soils depleted of water. Constructing ground water percolation courses can help the trees develop a healthy immune system which can fight off the bark beetles and diseases. Placing drip irrigation lines among the trees is a big plus during the annual dry months. And of course, a good normal series of wet storms this season and in years to come, can reverse the adverse conditions brought on us all because of the drought.

The PMLA Maintenance Department is working on a Timber Harvest Plan to remove the increasing quantity of dead pine trees in our greenbelt areas. We are working with our Professional Forester, Licensed Timber Operators and Cal Fire on the large scale timber removal project. We will communicate the implementation of the project for PMLA in these next coming months.

For California, and especially the Sierra Foothills, we do rely on the information supplied to us from the University of California, Davis, School of Agriculture and Natural Resources. This is a good link with specifics to the invasive bark beetle.  
<http://www.ipm.ucdavis.edu/PMG/PESTNOTES/pn7421.html>

**PINE MOUNTAIN LAKE ASSOCIATION**  
**SUMMARY STATEMENT OF OPERATING FUND REVENUES AND EXPENSES**  
 For The Eleven Months Ended Nov. 30, 2014

OPERATION OF AMENITIES	Revenues					Expenses				Budget (NET COST) INCOME	Variance Bud - Act
	Members' Assessments Net of Discount	User Fees	Sales, Net of Cost of Sales	Miscellaneous Income	Total Revenues	Total Expenses	(Cost)/Income Before Depreciation	Depreciation Expense	(NET COST) INCOME		
Golf Course	\$ -0-	\$ 817,117	\$ 29,474	\$ 380	\$ 846,971	\$ 1,204,638	\$ (357,667)		\$ (357,667)	\$ (337,966)	(19,701)
Restaurant & Bar	-0-	17,813	740,797		758,610	1,092,991	(334,381)		\$ (334,381)	(358,822)	24,441
Marina	-0-	238,792	136,102		374,894	431,421	(56,527)		\$ (56,527)	(60,080)	3,553
Snack Shack	-0-		26,130		26,130	57,999	(31,869)		\$ (31,869)	(24,140)	(7,729)
Stables	-0-	68,784		2,600	71,384	185,362	(113,978)		\$ (113,978)	(121,053)	7,075
Recreation	-0-	40,316	4,157		44,473	99,357	(54,884)		\$ (54,884)	(74,876)	19,992
Roads & Facilities Maintenance	-0-	31,368		440	31,808	1,467,208	(1,435,400)		\$ (1,435,400)	(1,464,605)	29,205
<b>PROPERTY OWNER SERVICES</b>											
Safety	-0-	79,930		1,754	81,684	778,678	(696,994)		(696,994)	(750,024)	53,030
Administration	-0-	129,585		19,871	149,456	1,155,902	(1,006,446)		(1,006,446)	(1,061,765)	55,319
<b>ASSESSMENTS</b>											
Assessments	4,342,992			61,413	4,404,405	118,015	4,286,390	709,476	3,576,914	3,484,992	91,922
<b>Totals</b>	<b>\$ 4,342,992</b>	<b>\$ 1,423,705</b>	<b>\$ 936,660</b>	<b>\$ 86,458</b>	<b>\$ 6,789,815</b>	<b>\$ 6,591,571</b>	<b>\$ 198,244</b>	<b>\$ 709,476</b>	<b>\$ (511,232)</b>	<b>\$ (768,339)</b>	<b>257,107</b>

**Notes to the Financial Statements**

1. Total Revenues minus Total Expenses equals Net Income before depreciation. The annual budget for income before depreciation is \$0.
2. The Association combined the Operating Fund and the Property and Equipment Fund into one fund effective May 1, 2001.

**DID YOU KNOW...  
 YOU CAN NOW  
 MAKE YOUR  
 P.M.L. PAYMENTS  
 ONLINE?**

**Now Available  
 Online bill pay at  
 PineMountainLake.com**

*Pay via your credit card  
 -quick & easy!*

<b>CAPITAL EXPENDITURES 11 Months Ended Nov. 30, 2014</b>			
	TOTAL RESERVE FUNDS	NEW CAPITAL ADDITIONS FUND	TOTAL CONTRIBUTION TO CAPITAL
<b>2013 Beginning Fund Balances</b>	2,243,037	\$ 19	2,243,056
Interest Income	2,550	2	2,552
Bank Fees/Discounts Taken	557		557
Assessments Earned	1,665,763 <sup>(1)</sup>	152,955 <sup>(2)</sup>	1,818,718
Other Income/Expense	107		107
<b>PURCHASES BY AMENITY</b>			
Golf Course	(70,293)	(18,581)	(88,874)
Country Club	(43,340)	(1,283)	(44,623)
Bar	(2,284)		(2,284)
Marina	(573,436)	(10,257)	(583,693)
Snack Shack	(761)		(761)
Swim Center	(1,436)		(1,436)
Stables	(41,356)		(41,356)
Recreation			-
Roads & Facilities Maintenance	(3,975)	(5,221)	(9,196)
<b>PROPERTY OWNER SERVICES</b>			
Safety	(8,765)	(1,398)	(10,163)
Administration	(11,380)		(11,380)
Non-Capital Reserve Expenses	(1,379,013)		(1,379,013)
<b>Total transfer to Operating Fund for property and equipment additions and reserve expenses</b>	<b>(2,136,039)</b>	<b>(36,740)</b>	<b>(2,172,779)</b>
<b>Adjusted Fund Balances</b>	<b>\$ 1,775,975</b>	<b>\$ 116,236</b>	<b>\$ 1,892,211</b>

**Notes to the Financial Statements**

- (1) The Budgeted Reserve Fund assessment for 2014 is \$1,817,195
- (2) The Budgeted New Capital Additions Fund assessment for 2014 is \$166,857

# PMLA Money Matters

BY KEN SPENCER, ASSOCIATION CONTROLLER

Another year has come and gone. With the arrival of 2015 we say goodbye to 2014. Each new year brings the promise of a fresh start with new opportunities and chances to improve our lives and the world around us. With that in mind I thought I would share some New Year's Resolutions with you.

**I resolve not to mention mergers in my PML News articles in 2015 (after this one):** As all of you know the impact of mergers on the level of the Association's annual assessment has been a recurring topic with me. It continues to affect us and will do so for years to come. I have had my say on this and will now let it drop (at least for this year).

**I resolve to be more tolerant of my critics:** I know, I know, it's hard to believe I actually have any critics but they are out there. I will work harder to understand their point of view and opinion (no matter how far off base they may be). After all I think we can all agree that I am pretty close to perfect.

**I resolve to be more humble:** See answer above.

**I resolve to have a more positive, optimistic outlook:** From a financial perspective this should be a fairly easy one to achieve. The economy has improved. Property values have gone up. Less property owners are having difficulty paying their assessment. All in all this points towards another positive financial year for the Association. I am optimistic that we will have solid results in 2015.

**I resolve to improve my golf game by at least two strokes:** This one appears on my list every year with virtually no success. I figure if I keep putting it out there maybe a miracle will happen and I will actually get better at this frustrating game. See I told you I was going to be more optimistic.

**I resolve to put forth my best effort in support of the Association and all of its goals:** This is one I already feel I accomplish but it never hurts to reiterate it. I enjoy working and living in PML and continually work to improve the condition of our finances. Doing my part to solidify the financial position of the Association is a high priority item and one I take seriously.

**I resolve to improve financial reporting:** It is important that the financial data you receive as a property owner is presented in a manner that you can understand, even if you aren't an accountant. With that in mind I intend to change some of the things that you read in this paper along with some other sources so that they are easier to read. I want to ensure that the numbers make sense to all property owners.

**I resolve to respect, admire and support my boss:** Come on, this is supposed to be a list of things that are possible and remotely achievable, not an impossible dream.

**I resolve to keep my day job:** Obviously I don't have a promising career in stand-up comedy to serve as a back-up plan.

Well that's it for this month. If you have any PMLA Money Matters you would like to see discussed in this column in the future please drop me a line at [controller@pinemountainlake.com](mailto:controller@pinemountainlake.com) or give me a call at 962-8606. Thanks for reading and I hope you find this monthly discussion helpful and at least a bit informative.

## PML Safety Report

	November	YTD
Guest Passes Issued	1,306	16,288
Vendor Passes Issued	91	1,596
Temporary Resident Passes Issued	187	5,016
Vehicles Admitted	8,994	134,144
Vehicles Refused Entry	163	2,914
Phone Calls Received	3,897	56,068
Residential Alarm	9	107
Animal - Loose	22	209
Animal - Impounded	8	56
Animal - Dead/Injured	23	309
Animal - Disturbance	8	165
Public Assist	29	263
Welfare Check	3	27
Transport	2	41
Traffic Hazard	1	21
Traffic Control	0	1
Gate - Tamper	0	3
Gate - Follow Through	4	29
Gate - Malfunction	9	128
Gate - Struck by Vehicle	4	27
Control Burn Reported	10	368
Smoke Complaint	0	32
Residential Disturbance	1	69
Amenity Burglary	0	3
Residential Burglary	0	8
Grand Theft	1	4
Petty Theft	0	27
Trespassing	0	33
Vandalism	0	12
Property Damage - PML	0	22
Property Damage - Resident	0	11
PML Reg Violations Resident	1	45
PML Reg Violations Guest	0	52
Vehicle - Citation Issued	0	49
Vehicle - Accident PML	2	16
Patrolling Unit	570	5,304
Amenity Security Check	2,441	26,921
Resident Security Check	151	2,352
Monitoring Tennis Courts	3	19
Weapon Violation	2	18
Fixed Post	2	34
Courtesy Notice Issued	3	43
All Fees Collected	\$4,795.71	\$127,017.99

### PMLA AUTOMATIC PAYMENT PROGRAM

Taking the time to write a check for your monthly assessment payment can be time consuming and costly. You can avoid this burden and eliminate the potential for late payment charges by enrolling in PMLA's Auto Payment Program. By completing the form, which can be found at [www.PineMountainLake.com](http://www.PineMountainLake.com) under the Financial Information tab, and returning it to the Administration Office, you can have your monthly assessment automatically deducted from your checking account or charged to your credit card. This means you never have to remember to write a check and mail it each month. The peace of mind that comes with knowing your payment will always be made on time is easy to attain. We can also arrange to have any other regular payment you make to the Association (such as golf membership, horse boarding fees, etc.) paid in the same way.

For more information on this simple, effective and time saving plan please contact us at (209) 962-8600.

### MAKE PML YOUR ONE-STOP-SHOP FOR ALL YOUR GIFT GIVING!

*Pick up a gift card for:*

**GOLF • GOLF SHOP APPAREL & ACCESSORIES • THE GRILL**

**BOAT RENTALS & GEAR AT THE MARINA**

**SNACK SHACK GOODIES • HUNTING & FISHING LICENSE VOUCHERS**

**(Gift cards are available at the Administration Office, The Grill, and at the Pro Shop)**

## LETTERS TO THE EDITOR

LETTERS RECEIVED – 4

DENIED BY EDITORIAL COMMITTEE – 0

Exceeds 250 word maximum – 0

Content – 0

Not a property owner – 0

DEFERRED TO NEXT EDITION BY

EDITORIAL COMMITTEE – 0

DENIED BY BOARD OF DIRECTORS – 0

DEFERRED TO NEXT EDITION BY

BOARD OF DIRECTORS – 0

Submit Letters to the Editor by sending to "Editor, PML News"  
Mail: 19228 Pine Mountain Drive, Groveland, CA 95321  
Email: [PMLNews@sabredesign.net](mailto:PMLNews@sabredesign.net) • Fax: 800-680-6217

### PLEASE NOTE THAT ALL LETTERS APPEAR IN THE ORDER RECEIVED BY THE PML NEWS

The Pine Mountain Lake News welcomes letters and articles for publication provided they meet the criteria established in the current PMLA Editorial Policy (See excerpt below – entire policy on file at the Administration Office). Letters must be limited to 250 words, typewritten using upper and lowercase letters (no handwritten material, no all-capital material) and signed with name, unit and lot by a property owner in good standing. **LETTERS MUST BE RECEIVED BY THE EDITOR BY 4:30 PM ON THE 10th OF THE MONTH.** Letters deemed by the Editorial Committee to be improper will not be accepted. Readers are advised that **THE OPINIONS EXPRESSED IN THESE LETTERS ARE THOSE OF THE INDIVIDUAL AUTHORS, NOT OF PMLA, THE PINE MOUNTAIN LAKE NEWS, NOR THEIR EMPLOYEES.**

### HOA FEE WORRIES

Well it is the beginning of a new year and once again our HOA fees are going up, this year another 4.29%. When will our elected officials and HOA managers realize this annual increase in HOA fees has to stop? At the current rate of increase our monthly HOA fees will be over \$280 per month within the next 10 years. Our elected officials and business managers have got to realize we have a spending problem and they must look for ways to reduce spending. Increasing the HOA dues are killing property values in our community and it will not improve until HOA fees stabilize and begin to recede. The economy, jobs, the stock market have all improved over the last few years and one of the few things that have not improved are home values in our community! The primary job of our elected officials and HOA managers is to create and preserve value within Pine Mountain Lake. The measure for how well or not this job is being accomplished are property values. Given the previous decline and continued stagnation in home values, it is clear there is much work to be done towards

finding ways to reduce spending. Reducing our spending always involves difficult decisions, but postponing the effort by continually raising HOA fees only makes the problem worse. It is such a pity to watch our community being destroyed because we cannot find ways to control our spending.

Gary Daughters  
Unit 1, Lot 132

### PML ASSESSMENT FEES FOR 2015

It has come to my attention, as it has probably come to yours, that the Pine Mountain Lake assessment fee for 2015 has been increased, again. We were also informed via a letter from the administration that the residents who have merged lots only pay one fee. That means that we who only have one lot must help pay for the extra lot or lots. This does not appear to be an equitable position. I know that it has been the practice for so many years but times have changed as well as circumstances. When I built my first home here the assessment fees were

\$250.00 per year. It is nearly that now per month.

It is understandable that all costs increase with time, but for those of us who are on fixed incomes or live on a limited financial budget, it seems unfair for us to pick up the costs of those who can more easily afford it.

This is not grumble against the more financially able, but recognition of inequality. I gladly donate and volunteer to help those in need. This does not happen to help here. It just feels unfair.

If you are interested in participating in a discussion on this issue contact me. Leave me your name, phone number/email address. 962-5205 – [ettyg@sonnet.com](mailto:ettyg@sonnet.com)

Etty Garber  
Unit 4, lot 485

### HIGHER DUES & MORE EXPENDITURES

The new year brings us a new board with the same results. Higher dues, no solutions in cost cutting for our home owners, and more of "our" money spent on failing businesses. There is only 1 board

member that is interested in trying to reduce our dues, thank you Brian Sweeney. The Grill Restaurant & Golf Club we subsidize with our money because they are a failed run business, or they claim to be so they continue to get a portion of our dues! Congratulations, well done now the board approves \$22,000 more to the gun range? Another reason to keep raising our dues. Spend to justify increases.

The PML Board is a embarrassment, arrogant and inept, period. Merry Christmas here's my wallet!

Danny Maloney  
Unit 6, Lot 172

### GALLON MILK JUGS ON THE GRADE

I'd like to know who places those water filled gallon bottles at the turn outs on the grade? I have a bunch (like 50) clean and dry, ready to be put into action. I would be happy to give them to you, if you call me @ 962-0317. Thank you.

Mary Brown  
Unit 3, Lot 316

## GOT SOMETHING TO SAY?

Let your voice be heard with a letter to the editor. Submit your letter to the editor by mail to:



PML News Editor  
19228 Pine Mountain Drive  
Groveland CA 95321

or by email to: [PMLNews@SabreDesign.net](mailto:PMLNews@SabreDesign.net)

## NOTICE

Main Gate personnel are available to issue gate cards on Saturday & Sunday from 8:30 AM to 4:30 PM.

Please call in advance to schedule an appointment at

**209-962-8615**

### BEFORE YOU BEGIN CONSTRUCTION ON YOUR LOT

The Declaration of Restrictions (CC&Rs) states that no construction of any type (new construction, driveways, grading, lot clearing, etc.) can be performed without prior approval from the Environmental Control Committee (ECC). Failure to obtain approval could result in the stoppage of work or even fines, and nobody wants that to happen. Inspections are made every Tuesday and reviewed by the Committee every other Thursday, so we can accommodate our members.

Please contact ECC before you begin any type of construction at

**209-962-8605**

## 2015 ASSESSMENT/BUDGET PACKETS

The 2015 Assessment/Budget Packets were mailed to members on December 1, 2014.

**IF YOU HAVE NOT RECEIVED YOUR 2015 PACKET,**  
Please, contact the PML Administration Office at  
(209) 962-8600



## Shades of Green

BY ALAN MACDONALD, GOLF COURSE SUPERINTENDENT

With fall turning to winter on the calendar the crew is busy with course cleanup following the rain and wind of December. Here's hoping that the winter storms continue to line up to provide us with the much needed rain and snow.

About four times a year our golf professional and I will meet with members that represent the men and women's golf groups. This information is then shared with each group by their representative. Recently a questionnaire was sent out to receive feedback on proposed course projects. The questions generated are topics that are asked many times throughout each and every year by the membership. It was nice to see the response to the questionnaire sent out in regards to changes or improvements to the course. All of the opinions are appreciated and respected. I do hope that we see even more feedback as we move forward. This course belongs to all of you, and the changes or proposed changes are to make it a better, more enjoyable golf course for the entire membership.

### Which drive do you want straight down the middle of the fairway?

- A – Your tee shot
- B – Your golf cart

Here's hoping your choice was A. Observing the 90 degree rule and staying on the path has many benefits to improving course conditions, both during dry and wet conditions. Turf that is compacted makes it extremely difficult for the roots to breathe and for the soil to allow water into the root zone.

How is it that just this small cart can have an

impact on growing conditions?

Observe the turf from the left side of #9 green around to the stop sign. The area that runs along Mueller near the landscaped area. It shows the effect of compaction from cart traffic that strays off of the path up to the left side of the green and around.

From a care taker of the turf, it is my feeling that we are quite liberal with allowing cart traffic back on the course after storms or during drought conditions. {Remember, we want you out here enjoying the course and the game.} It is not uncommon for cart or tire damage to occur following a storm when we do allow carts back on the course. Please give your driving habits as much thought as you do to your next golf shot. The grass you drive and play on will be healthier for it.

A couple of projects that are planned and approved for 2015 are improvements to the restrooms along with the every other year of funding to improve the cart paths.

2015 dates that we are closed for greens aeration are April 21, 22 and September 28, 29.

As 2014 turns to 2015 we will be saying goodbye to our long time "bunker boy" and greens roller, Tony Pavlakis. Tony has worked as a part time employee for us for over a decade. He has a real passion for this course and is a true ambassador for the association. I appreciate all of the hard work that he has done for us over the years. He will be missed but not forgotten.

Thanks Tony. Good health and good luck. And, please don't be a stranger!

Happy New Year to all.

## From The Fringe

BY MIKE COOK, HEAD GOLF PROFESSIONAL

### Happy New Year! From the Golf Shop Staff

If you have not signed up for your annual golf membership it is not too late, the applications are available in the golf shop. Punch Cards will again be offered this year if you decide not to sign up for an annual membership, Punch Card applications are also available in the golf shop. If you have any questions concerning memberships, punch cards or any other service we provide, please call the golf shop 962-8620 and any member of the golf shop staff will be happy to assist you.

### Golf Cart Driving Restrictions

We hear a number of questions concerning golf cart driving restrictions:

- Why do we need to keep the golf carts on the path around tees & greens and on par 3's?
- What is so important about using the 90 degree rule? (traveling laterally across the fairway at a 90 degree angle from the cart path rather than traveling straight up the fairway)
- Why do we need to keep the golf carts on the paths at all times when turf conditions have been softened due to rain?

Three good questions, all with the same two part answer: **Compaction & Turf Damage.**

Golf carts with golfers and equipment weigh approximately 850 pounds. When golf carts are driven on the turf compaction WILL happen. When turf conditions are soft due to rain, the carts WILL create ruts that are lasting impressions (not the good kind) and are very difficult to repair. Keeping the golf carts off the

turf as much as possible will greatly reduce turf compaction and damage problems. Even push carts (or Trolleys as they are called across the pond) can leave ruts in the turf.

**COMPACTION** – Turf compaction does not allow water to penetrate the soil to get down to the roots which creates unhealthy turf (grass) leading to dry compacted areas where grass cannot grow.

**TURF DAMAGE** – Driving golf carts on the turf during soft conditions will leave ruts that compact the soil, cause the mowers to scalp the turf, cause bad lies (sorry no relief from golf cart tire ruts) and just plain look bad.

Golf is a great game based on personal integrity and responsibility, if we all do our part concerning following the golf cart rules, fixing ball marks and replacing divots our golf course will continue to be in great condition and the game of golf will continue to be the greatest game on earth.

### Rules of Golf Quiz

Jim hit his tee shot on #16, his ball, while still in motion, struck a mower and went out of bounds.

What is the ruling?

- a) Drop a ball as near as possible to where it struck the mower, no penalty.
- b) Place a ball as near as possible to where it struck the mower, no penalty.
- c) The shot is canceled, since the mower is an outside agency, replay the tee shot, no penalty.
- d) The ball is out of bounds (Rule 19-1), proceed under Rule 27-1.

## AMENDMENT TO ECC RULES AND GUIDELINES BOOK

The following is an approved amendment to the PML Environmental Control Committee Rules, Guidelines and Construction Standards book. The purpose of the amendment is to update the ECC rules to reflect current practice, clarify standards, and changes to Tuolumne County department descriptions.

The effect of the amendment impacts the improvement of property within PML and provides further clarification of the rules and standards. This draft was discussed at the September 20, 2014 monthly Board meeting. Given the size of the ECC booklet, the Association chooses to publish a summary of the specific paragraphs that are proposed for change. The purpose of this is to save money on publication costs.

To ensure that all members have an opportunity to review the ECC book in its entirety, it was posted on the PML Website for easy access. Members who wish to have a hard copy mailed to them can make a request in writing to the Administration Office.

Update was approved at the November 8th monthly Board meeting at the PML Lake Lodge.

## ECC Rules, Guidelines and Construction Standards Guidebook SUMMARY OF CHANGES SEPTEMBER 2014

Cover Sheet: Update amended date and Secretary

Pages 6 – 9: Update Plan Submittal Requirements

Page 11: Update name/phone # of County Community Resources Agency

Page 12: Update ECC Construction Rule #1, addition of DOS phone number to Rule #2 and update signage info Rule #11

Page 14: Add Conceptual Review as first ECC inspection

Pages 15 – 16: Update requirements for greenhouses

Page 17: Change minimum size of numbers required on Address/Property Identification signs

Page 18: Change "Shoreline" to "High Water Line"

Change verbiage on size of dog runs

Change verbiage on size of corrugated metal pipe for water runoff

Page 20: Update name/phone # of County Community Resources Agency

Page 21: Additional verbiage regarding compliance with State and Federal regulations and restrictions under LAKE SHORELINE IMPROVEMENTS

Page 23: Additional verbiage regarding compliance with State and Federal regulations and restrictions under SEA WALLS Change "mean water level" to "high water line"

Change verbiage regarding property corners

Page 24: Change when construction signs shall be removed

Page 25-26: Update County ordinance information

9/18/14 dd

For a complete copy of the revised ECC Rules, Guidelines, and Construction Standards please go to [www.PineMountainLake.com](http://www.PineMountainLake.com) and click on "ECC" in the column on the left.

## COMMITTEE MEMBERS NEEDED

The Board is seeking members for the following Committees:

*Budget & Finance • Covenants • Environmental Control*

*Editorial • Long Range Planning • Waterfowl Management*

Interested members can get more information by visiting the PML website at:

[www.PineMountainLake.com](http://www.PineMountainLake.com) or by calling the PMLA Administration Office at (209) 962-8600

Applications will be considered at the January 17, 2015 Open Board Meeting.

## ALL PMLA HOMEOWNERS EMAIL OPT-IN PROGRAM

The Association is pleased to offer a money saving program available to all PMLA property owners. This program allows you to receive many of the documents we are required to provide to you via email. This option is important because:

**Cost Savings** – The Association is spared the expense of printing and mailing many documents to those property owners who sign up.

**Environmental Savings** – Less paper means less trash and reduced damage to the environment both in the disposal and production of paper and envelopes.

**Reduced Clutter** – By receiving documents via email there is less paper

for you to deal with. All documents can be saved on your computer and viewed at your discretion.

**Timely Receipt** – Documents sent electronically are received in minutes as opposed to the days it takes for regular mail to arrive.

If these sound like good reasons to you, please sign up for the Document Email Program today using the attached form. Simply return the completed form to the Administration office at your convenience.

If you have any questions on this program please feel free to give us a call (962-8600) and we will be happy to explain the details and the advantages.

Please read the Terms & Conditions for the email opt-in program on the website, [www.pinemountainlake.com](http://www.pinemountainlake.com) under the Resource Center Header > Important Information & Forms > Forms > Opt-In Email Program.

Mail form below to:

Pine Mountain Lake Association • 19228 Pine Mountain Drive • Groveland, CA 95321

YES, I want to enroll in PMLA's email statement and document service. I acknowledge and agree to the terms and conditions set forth above as a condition for participation in this service.

PMLA Account Number: \_\_\_\_\_ Unit/Lot #: \_\_\_\_\_

Name: \_\_\_\_\_ Phone #: \_\_\_\_\_

Address: \_\_\_\_\_

Email Address: \_\_\_\_\_

Signature: \_\_\_\_\_

## GOT YOUR PIN?

Since PML is a private gated community, we want to offer our property owners a secure way to call in guests. When you become a member of PML you are assigned a Personal Identification Number (PIN) to utilize either when calling in a guest pass or using the Gate Access Internet program. This PIN identifies you to staff without you having to be present. This is a confidential number and should **not be shared**. When you call the Main Gate to authorize a guest or vendor access into PML, you will be asked for your PIN. The staff will look up the number in the computer and use it to confirm your identity before entering the guest information. You must have this number to utilize the Gate Access Internet program as well. If you do not know your PIN or have any questions, please contact the Administration Office at:

**(209) 962-8600**



Monday through Friday  
from 8 am to 4:30 pm. and we will  
gladly supply this information to you.

## Guest & Renters Handbook is Available Online!

You can now view or print the Guest and Renters Handbook from the PML Website. Go to our website at: [www.PineMountainLake.com](http://www.PineMountainLake.com) and click on the Important Information & Forms tab under the Resource Center title. Then click on Guest and Renters Handbook. This handbook has valuable information for Guests and Renters in Pine Mountain Lake.



## FIREWOOD – FIREWOOD – FIREWOOD

Firewood Cutting Is Here  
PML SLASH and COMPOST SITE

OAK and CEDAR – Requires a \$20 PML  
Wood Cutting Permit

Wood Cutting Permits Available  
at the Maintenance Facility

PINE and FIR – Available for free CUT & HAUL

For more information please  
contact Susan at (209) 962-8612 between  
the hours of 7 am to 2:30 pm, M-F.

# PML Equestrian Center

BY JEANNA SANTALUCIA – EQUESTRIAN CENTER MANAGER

**Hello!**

To start with, I would like to thank several people who have helped me get my feet on the ground this first month. First, I would like to thank Joe Powell and Ivonne Deckard for awarding me this challenging position. Second, thank you to Eric King, who has been invaluable by giving me the background on the programs, boarders and horses associated with the Stables. And last but certainly not least, thank you to Dave Balek whose advice on maintenance, referrals and the general operations has been of immeasurable value.

We are off to a great start, having had a “Meet-and-Greet” with the Boarders on December 1st. We enjoyed a beautiful morning on the lawn sharing ideas, suggestions and concerns and laying the groundwork for a unified working environment.

Property Owner Carol Abreu has graciously agreed to spearhead our Boarder/Employee Contacts List. Using this tool we can create email blasts for general information, safety procedures and any other information that needs to be related to those utilizing the Stables. It was encouraging to see how excited everyone was to lend a hand for whatever we need to maintain and

develop our beautiful facility.

We are excited to announce we have booked the internationally acclaimed Horsemanship Clinician, Jeff Sanders for August. I am also in the process of creating a “Trainee Program” for local students (and adults) interested in learning about horses, horse care and riding, with the idea of also teaching job training skills for their future.

Currently we have room for a few more horses to board. Spaces are limited and they tend to be filled quickly so if you’re interested, please contact the Stables as soon as possible.

The gorgeous weather we’ve been having has given us time to prepare for the winter months. At the time of this writing, we’re expecting a large storm of between 4 – 7 inches of much-needed rain. This will certainly help green-up our pastures, laying a lovely foundation for the Spring.

We will be expanding our visibility by adding more non-horse related activities for the Spring and Summer. We will be adding new photos and programs to our website and adding a new Facebook page.

I welcome PMLA members to email any ideas, suggestions or comments to: [stables@pinemountainlake.com](mailto:stables@pinemountainlake.com)

# From Your Tuolumne County District Supervisor

JOHN GRAY, TUOLUMNE COUNTY 4TH DISTRICT SUPERVISOR

Here’s hoping that everyone enjoyed a great holiday. The last months of the year are always hectic but as we welcome the New Year ahead, we can reflect on times past while keeping a positive eye toward the future. Having experienced a little bit of “winter” with rain and snow has made the season even more eventful. Let’s all hope that it continues.

With the New Year we say farewell and best wishes to Vicki Helmar who is retiring as Tuolumne County Agricultural Commissioner. This position includes the additional titles and duties as the Sealer of Weights and Measures, Air Pollution Control officer and Animal Control Director. She has done an excellent job for our county and we wish her well in her retirement.

At the December 16th Board meeting, Gary Stockel was appointed as the new Ag Commissioner. He holds Agricultural Commissioner and Sealer of Weights and Measures Licenses from the California Department of Food and Agricultural. His work experience covers over 30 years gained in both Alameda County and San Joaquin County.

Getting something that makes sense on paper has been a struggle this month. It’s not that there aren’t subjects to address as we never run out of “issues”. The difficulty comes in trying to develop a reader’s digest version of these issues without monopolizing all available space in the publication.

This month, I’ll touch on two topics of interest.

Tuolumne County is in the process of updating certain portions of the Tuolumne County General Plan. “General Plan?? So just what is this General Plan?” A question recently presented to me by one the residents of this County.

The Tuolumne County General Plan is a set of policies, programs and maps that form a blueprint for physical development in the unincorporated area of Tuolumne County. In our case, it covers the entire county with the exception of the City of Sonora. The General Plan addresses important community issues such as new growth, housing needs and environmental protections. Its policies are instrumental in planning infrastructure to accommodate future growth.

State law requires that all counties and

## PINE MOUNTAIN LAKE ASSOCIATION JOB FAIR

SATURDAY, MARCH 28, 2015  
10 AM to 2 PM

PMLA Lake Lodge at  
20270 Pine Mountain Drive

JOIN OUR  
SUMMER/SEASONAL TEAM!

<p style="text-align: center; font-weight: bold; margin: 0;"><u>THE GRILL</u></p> <ul style="list-style-type: none"> <li>Servers</li> <li>Line Cook</li> <li>Prep Cook</li> <li>Dishwasher</li> <li>Bussers</li> <li>Snack Shack</li> </ul>	<p style="text-align: center; font-weight: bold; margin: 0;"><u>PRO SHOP</u></p> <p style="text-align: center;">Outside Services</p> <p style="text-align: center; font-weight: bold; margin: 5px 0;"><u>POOL</u></p> <ul style="list-style-type: none"> <li>Manager</li> <li>Attendants</li> </ul> <p style="text-align: center; font-weight: bold; margin: 5px 0;"><u>MARINA</u></p> <ul style="list-style-type: none"> <li>Store Clerk</li> <li>Boat Clerk</li> <li>Boat Handler</li> <li>Water Taxi</li> <li>Gate Guard</li> </ul>
---	--

LAKESIDE CAFÉ

- Supervisor
- Line Cook
- Cashier

cities adopt a general plan to include at least seven mandatory elements: Land Use, Circulation, Housing, Conservation, Open Space, Noise and Safety.

Tuolumne County has additional elements that include Public Facilities, Recreation, Cultural Resource Management, Economic Development, Agricultural Resources, Air Quality and Community Identity.

We have completed the in-house review by the Board of Supervisors Planning Committee. The Board of Supervisors has contracted with Ricon Consultants to do the environmental review. It is hoped that the Plan will be ready for public comment and review in early 2015. Please follow the process so that you can give your input. Information can be found on the Tuolumne County website at: [www.tuolumnecounty.ca.gov](http://www.tuolumnecounty.ca.gov)

If you have been following the news on the drought you know that there have been a large number of well failures in Tuolumne County. Don’t let the recent rains fool you. It will take a long time and more moisture to recharge the groundwater.

In September, Governor Brown signed

Executive Order EO B-26-14, which authorizes California Office of Emergency Services to provide California Disaster Assistance Act funds to households that have lost their drinking water due to the current drought. If you are experiencing any ground water or surface water problems, please take time to fill out the intake form available on the Environmental Health Section of the Tuolumne County website.

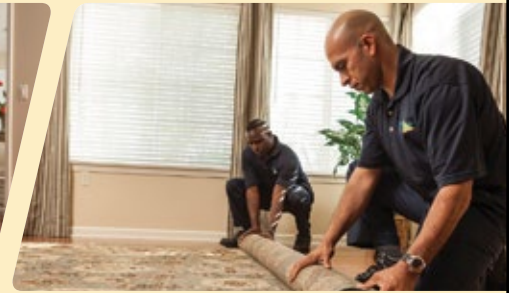
Tuolumne County and the Governor’s office will use this information to offer assistance with restoring water to households in order to ensure that the residence has sufficient water for health and safety needs. If you need more clarification or help, please feel free to contact me.

Starting in February I will change the office hours in Groveland from the last Wednesday of the month to the second Monday of each month from 9 am to 11 am at the Groveland Recreation Center. My Don Pedro hours will continue to be held “by appointment” at the Hacienda. As always, if you would like to meet with me, please feel welcome to call me at: (209) 533-5521 or email me at [jgray@co.tuolumne.ca.us](mailto:jgray@co.tuolumne.ca.us).

**\$25 DISCOUNT**

Mention this ad for a discount on cleaning services.

Minimum charge applies.



**DISASTER RESTORATION SERVICES • RESIDENTIAL AND COMMERCIAL CLEANING SERVICES**

Carpet & Furniture Cleaning • Steam & Dry Cleaning • Deep Soil Extraction • Spot & Odor Removal • Oriental & Fine Rug Cleaning • Ultrasonic Blind Cleaning  
 24 Hour Emergency Service • Water Removal • Wet Carpet Care • Fire & Smoke Restoration • Vandalism Cleanup • Structure Drying • Sanitizing

*ServiceMASTER Restore*

*The clean you expect.  
 The service you deserve.®*



Serving Tuolumne, Calaveras & Amador Counties

ServiceMasterSierras@mlode.com • www.ServiceMasterSierras.com

**209-532-1700**

17330 High School Road  
 Jamestown CA 95327



**RAY'S Roofing**

Fully Insured - Liability & Workers' Comp

FREE ESTIMATES

REFERENCES AVAILABLE

Complete Roofing Service

- Gutters
- Repairs
- Skylights
- Dry Rot

IN PML SINCE 1990

(209) 962-0368  
 Lic. #610291

Ray Lemasters

Kevin  
 Old Fashioned  
**MEAT MARKET**  
 Randi's

962-5500

18687 MAIN ST. B1 • GROVELAND, CA

**JOANNE BERNASCONI-SCOTT**  
 Independent Beauty Consultant

13166 Wells Fargo Drive  
 P.O. Box 1257 Groveland, CA 95321  
 HOME: 209-962-6394  
 CELL: 209-573-1415  
 Bernijo3@aol.com  
 www.marykay.com/jbernasconi

Enriching Women's Lives™



**GROVELAND'S CABLE TELEVISION SERVICE PROVIDER**



Your Web browsing and file transfers too slow?...

Get **High-Speed Internet** added to your cable service and get **Standard\* Installation \$15<sup>95</sup>** with purchase of modem.

LIMITED TIME OFFER

**CALL FOR INFO**  
**(209) 962-6373**

\*NOTE: Additional cabling may incur extra charge

**ASK ABOUT OUR 10MB SPEED!!!**

# P A I N T I N G

## Bay Cal

LIC #795283

**Painting – Exterior/Interior**  
**Deck Repairs**  
**Wood Repairs**  
**Remodels**



**FREE ESTIMATES**

**209.962.4777**

www.baycal.com • email: davec@baycal.com

**AFFORDABLE ADVERTISING**  
**PML NEWS — 209-962-0342**

## *Peter Fischer Construction*

peterfischerconstruction@gmail.com



12969 Clements Rd  
 Groveland, Ca. 95321  
 Phone/fax 209-962-6199  
 License# 658830

peterfischerconstruction.com

**Services - No job is too big or too small**

Custom Homes	Hardwood floor installation
Remodels	Masonry
Green Building	Painting EPA CERTIFIED
Porch or sunroom additions	Fireplaces / new or remodeled
New Roof	Solar panels
Carpentry	Deck replacement or repair
Concrete	Elasto-Decking
	Window/Door replacement

For our customers convenience we accept credit cards

## COSTA'S TREE SOLUTIONS



**Steve Costa • Owner**  
 Fully Insured/Bonded C.C.L. #818373

209-962-4468  
 cell 209-768-4469  
 Certified Arborist #WE7496A



### GROVELAND GAL FRIDAY

**LET ME HELP YOU WITH YOUR NEW YEAR'S RESOLUTIONS!**

I can help you organize, file, undecorate, shop, cook, elder care, rides, pet care, housesitting, home checks, and many other tasks.

**CALL ME FOR ANY HELP YOU NEED!**

**SHARON VOLPONI**  
 962-6848 • 770-6277

Bonded Insured

## **Call Hamm's Carpet Cleaning**

### Green Cleaning

**For Health • Appearance & Longevity**



**Locally Owned & Operated for 24 years**  
**209-962-5852**

**In Association With green tree**

• IICRC Certified Firm # 13341	• Member of Carpet & Fabric Institute
• Certified Technician on every job	• Business Profession & Trade License # 29950

# Dinner Show

FEATURING SIERRA SOUNDS



**"100 YEARS OF BROADWAY"**



## DINNER

- Top Sirloin with a Cabernet Demi Glaze
- Seasonal Vegetables
- Mashed Potatoes
- Chef's Choice Dessert

**SUNDAY JANUARY 18**

Show starts at 5pm

**\$47 INCLUSIVE**

Limited seating  
call for reservations

**209-962-8638**

## Happy New Year from The Grill

BY JAY REIS, THE GRILL MANAGER



We are preparing for another busy year at The Grill. We are currently scheduling and planning our monthly wine dinners for 2015. We are also planning menus for some of

the annual golf tournaments. Easter and Mother's Day Brunches are very popular so make your reservations early.

As we start the New Year off, I'd like to thank all of you for supporting The Grill this past year. We have been staying pretty busy on Friday and Saturday nights in the winter. The Grill staff and I look forward to serving you again in the upcoming year.

In January, the Grill is a great place to escape from cabin fever with some of the

best views of the snow capped mountains. We have great food in a warm and comfortable atmosphere, but many of our guests just like to come in and play cards or use the WiFi, or come in and watch your favorite sports team in HD, or on Saturday night come dance the night away to the live bands. The most popular night is still Karaoke the 1st Friday of each month.

A special thank you to the ladies of the ROOFBB's that volunteered their time to help decorate the Grill for the holidays. They did a wonderful job at making the Grill look so festive for the holidays. I hope the past year has been good for all of you and here is to this year being even better. Your comments and suggestions are always welcome. Please feel free to contact me at [clubmgr@pinemountainlake.com](mailto:clubmgr@pinemountainlake.com).

## PML PickleBall Club

BY KAREN SEALS

### SO WHY IS PICKLEBALL SO POPULAR?

Today, most adults lead active lives, are health conscious and wish to continue to be involved in activities. Though bodies tend to slow a bit with age and can be more prone to joint and muscle strain or injury, Pickleball provides an enjoyable alternative to higher impact sports, such as tennis. The rules of the game dictate an underhanded serve, a single bounce before the first hit, and a non-volley zone at the net which slows the game down significantly. Though it requires good hand-eye coordination and some stamina, the smaller-sized court decreases the need to run, which in turn lessens the probability of injury. The low impact nature of the sport opens the field so that all ages and mobility levels can participate.

Pickleball may be less strenuous and taxing on the body, but it does not mean there is a decrease in the physical benefits from playing the sport. The game still develops good reflexes, coordination and provides a great cardiovascular workout. Due to its less taxing nature, older, active adults can continue to play this sport well into their retirement years and receive the same health benefits of higher impact sports.

Socialization is an added benefit of the game, providing retirees an opportunity to meet similarly active individuals who take part in recreational or tournament play. The first national Pickleball tournament was held in a retirement community that had 36 courts. The popularity of tournament play has continued to explode in recent years with the sport being added to the Senior Olympics in several states. Due to the longevity of its existence and ever increasing popularity, Pickleball appears to be much more than just a passing fad. With proven health and social benefits, Pickleball is certain to remain a mainstay in the lives of active adults for years to come.

Pine Mountain Lake now has a PickleBall Club! Come on out and join the fastest growing new sport in America today. We are located at Court 6 over by the Golf course. Free Lessons and equipment to use every Saturday from 9-11 AM. For more information you can go to our Facebook page or check us out on MeetUp.

Pickleball @ Pine Mountain Lake, email us at [PMLPickleball@gmail.com](mailto:PMLPickleball@gmail.com) or call Karen Seals at 962-6657. **Come on out and Join the Fun!!**

## GOT RESERVATIONS?

Call The Grill, 209-962-8638 to make reservations.

YOU'RE INVITED

# Wine Tasting

& DINNER BUFFET

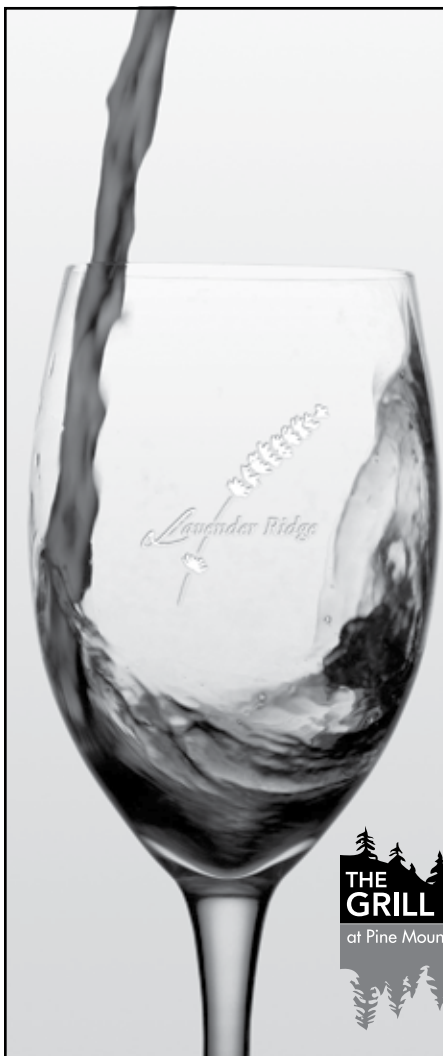
FEATURING WINES FROM

Lavender Ridge Winery

THURSDAY · JANUARY 15TH · 5PM TO 7PM

Only \$23 PER PERSON PLUS TAX

RESERVATIONS REQUIRED 209-962-8638



## PML Organized Groups & Clubs

Contact the individuals below if you are interested in joining!  
(All numbers are 209 area code unless noted otherwise)

<b>Aviation Association</b> Lynne Orloff	962-4631
<b>Computer Users Group</b> Frank Perry	962-0728
<b>Exercise</b> Barbara Elliott	962-6457
<b>Friends of the Lake</b> Mike Gustafson	962-6336
<b>Garden Club</b> Lonnie Roman	962-6001
<b>Guardians of PML</b> Gus Allegri	962-6915
<b>Ladies Club</b> Maddie Sousa	962-5708
<b>Ladies Golf Club</b> Yvonne Mattocks	962-4165
<b>Men's Golf Club</b> Dick Faux	962-4617
<b>Men's 9-Hole Golf Club</b> Bob Oakley	962-4799
<b>Monday Bridge Club</b> Bill Parker	962-5957
<b>Needle Crafts</b> Lee Isbell	962-5727
<b>Pickleball</b> Karen Seals	962-6657
<b>Pine Needlers Quilt Guild</b> Wina Helm	962-6534
<b>PMLakers RV Club</b> Miles (Ned) Nuddleman	925-371-2287
<b>PML Niners</b> Stacie Brown	962-5129
<b>PML Shooting Club</b> Dick Collier	770-5022
<b>PML Waterski &amp; Wakeboard</b> Dean Floyd	(408) 378-7725
<b>Racquet Club</b> Rick Gratian	499-1001
<b>Residents Club</b> Dick Faux	962-4617
<b>ROOFBB</b> Ivonne Deckard	962-1904
<b>Sierra Professional Artists</b> Heinie Hartwig	(209) 586-1637
<b>Southern Valley Srs. Golf Group</b> Jim Sample	962-4747
<b>Sunday Couples Golf</b> Alma Frawley	962-5578
<b>Windjammers Sailing Club</b> Bob Haliwell	962-4137

## Garden Club Clippings

BY JOYCE SMITH

### Greetings for the New Year!

We do not have a meeting in January. We met at the home of President Lonnie Roman on December 1st. She closed out her year with a short business meeting and then treated us to a lovely brunch. It was a most enjoyable time. It was a perfect ending to a very good year. Thanks Lonnie for your able leadership and great year.

We met at The Grill on December 7th for Dinner and Installation of Officers for 2015. New Officers installed were: President-Sharon Hunt; Vice President-Louise Turney; Recording Secretary-Linda Glenn; Corresponding Secretary-Carol Willmon; Treasurer- Barbara Coldren; Parliamentarian-Lonnie Roman and Historian-Terre Passeur. The month of January is planning time for new officers. Their New year begins on February 9th. We will have a guest speaker Steven Umland from the Audubon Society. His topic will be "Birds of the Sierra". Mark this on your calendar, February 9th, 1:00, Lake Lodge.

See you at the Lake Lodge!

## Quilters Corner

BY SANDY SMITH

HAPPY 2015 TO ALL!!!! It is exciting to start a new year, but the most exciting thing is that, this is the year for THE STROLL. Only 6 months from now. Hope you are working on a special project for the show. Remember to be thinking about a Christmas Quilt for the showing, "Christmas in June", at Foothills Community Church.

The 3rd Tuesday of each month is when the Pine Needlers meet at 6 p.m. under the Library, except for January. No meeting, as such, instead we will be having a Holiday Party Celebration Potluck at the Community Hall. So if you are not a member, plan on coming in February. The Guild meetings are always heaps of fun, show and tell, learning new things and "goodies" too.

I have been exploring websites to share and thought you would be interested in these two, *waltzingquilter.com*, be sure to check out the redwork section. Loved the snowmen. And if you have little space and lots of fabric here is an option, *thefabricorganizer.com*, very interesting.

Moda is having a Piece and Comfort Challenge, using Red White and Free fabrics by Sandy Gervais. Begins Jan 1st thru March 31st. Nancy will not participating at Bearly Quilting, but check out the details on *happyapplequilts.com*. Sounds exciting.

Checked out a wonderful book at our Guild library. Take 5 quilts from just 5 fabrics by Kathy Brown, love it!

A wish from the Pine Needlers Guild, Have a happy, healthy, and prosperous new year!

## PML Ladies Golf Club Events

BY SARA HANCOCK

As you are reading this article, the year will be coming to an end and we will be looking forward to another year of great golf events. It is time to extend a big "Thank You" to those who stepped up to keep our club running so smoothly this year. Also, "Thank You" to those who are willing to keep us going in 2015.

We enjoyed some beautiful weather this month. However, November 13th brought us some much needed rain and the "Turkey" took over on November 27th. We did enjoy 2 play days.

### November 6th N.O.P.E.

(Net On Odd, Putts On Even and Gross On Par 3's)

**1st Place...**48...Kitty Edgerton

**2nd Place...**54...Sara Hancock

**3rd Place...**55...Marjorie Rich

**4th Place (Tie)...**58...Paula Vautier, Sue Perry, Kathy Shehorn, Yvonne Mattocks, Kay Bettencourt and Jane Reynolds

**Birdies:** Marjorie Rich #7.

### November 20th Three-Legged Turkey Shoot

Each player chose 3 clubs plus their putter and had to let the balance of their clubs rest for the day. Many were amazed by what they could do with so few clubs.

#### 1ST FLIGHT HANDICAPS 15-20

**1st Place...**Net 68...Thelma Faux

**2nd Place...**Net 70...Patty Peebles

#### 2ND FLIGHT HANDICAPS 20-29

**1st Place...**Net 74...Linda Wall

**2nd Place...**Net 76...Sue Perry

**3rd Place...**Net 77...Lynne Dust

#### 3RD FLIGHT HANDICAPS 30-37

**1st Place...**Net 67...Clarice Ligonis

**2nd Place...**Net 69...Kay Bettencourt

**Birdies:** Thelma Faux #3 and #7, Kitty Edgerton #1.

I am hoping you all had a wonderful Thanksgiving, a Happy Hanukkah and a Blessed Christmas. A very Happy New Year to you! See you on the course.

## PML Men's Golf Club

BY WAYNE DOTY

Another year has come and gone as has our final tournament of the 2014 schedule. The Turkey Shoot was contested on November 15th. The weather cooperated and a good time was had by all. Here are the results:

### GOLD

#### 1 (122 - \$25. ea)

Tom Borup

Jeff Papendorf

Dave Nilan

Bill Wrighton

#### 2 (123 - \$18. ea)

Frank Jablonski

Chuck Obeso-Bradley

Gary Oing

Mike Hankin

#### 3 (125 - \$14. ea)

Glen Fiance

Ted Toffey

Gary Deckard

Dave Egan

#### 4 (125 - lost Play Off)

Al Saisi

Jeff Sera

Mike Butera

Will Hoppner

### PURPLE/GREEN

#### 1 (110 - \$25. ea)

Joe Vautier

John Baker

Bob Ells

Richard Kennedy

#### 2 (118 - \$18. ea)

Dick Faux

Norm Peebles

Gus Allegri

Tom Pennybacker

### CLOSEST TO THE PIN WINNERS:

#3 Wayne Augsburg. . . . . \$20.00

#7 Mike Butera. . . . . \$20.00

#14 Chris Ligonis . . . . . \$20.00

#17 Dave Egan . . . . . \$20.00

The 2015 tournament schedule is now posted on the Men's Golf Club web site. Take some time to look it over and mark your calendars. The Holidays are upon us and I would like to take this opportunity on behalf of myself and all of the members of the Men's Golf Club Board to wish all of you all a happy new year.

### Golf Quote of the Month:

There is no similarity between golf and putting; they are two different games, one played in the air, and the other on the ground.  
- Ben Hogan



# Forty Niner Men's Golf Club

BY STEVE ENGSTROM

Our club held its annual business meeting and breakfast on the morning of Wednesday, November 19th. The meeting began with a talk by Mike Cook who is changing the maximum number of our members who can play on our Wednesday games during shotgun season to 24. This is because we only play 9 holes (either full front or full back 9) while most of the rest of the field plays 18 and can be shot gunned from any hole. Through various questions, he stated that this change was not because the 9 Hole Club is playing too slowly and the suggestion was made that if some members want to play 18 holes the maximum could increase. The details on this situation were not worked out during the meeting.

President Bob Oakley handed out a survey to be completed and handed back covering the various games for the 2015 season, rule changes, the addition of a Nine Hold Social Tournament, a yes/no/write-in vote on the Board of Directors and any comments or suggestions for the club (see Annual Meeting Survey/Ballot Results emailed separately by President Oakley). Some of the information was discussed at the meeting, such as the elimination of Yellow Ball and maybe just playing 4 Club once a year. The addition of "Beat the Pro" games was voted in by a hand ballot along with a discussion of keeping the Purple/Green Tees, which was voted to be retained, again by a hand vote. A discussion ensued on just having the first place winners paid for our games but no conclusion was reached. The question of our finances came up with the problem of being able come in at a zero balance at year's end. Suggestions included having more or less payee's for our annual tournament, increasing our weekly game fees from \$2.00 to

\$2.50, and increasing our yearly tournament fees were discussed. A motion was made, seconded and passed by hand vote to give the Board of Directors the authority to make the changes necessary to keep from having a negative cash balance at year's end (meaning after our annual business meeting is paid for).

The answer to last month's teaser is Sam Snead who won the Greater Queensboro Open eight times. This month's teaser is "Who was the first American to win the British Open"? Our winners for November are:

### 11/5 Low Net

- First:** Walt Bales
- Second:** Roger Peterson
- Third:** Bob Haliwell
- Fourth:** (Tie) Dick Eckman, Larry Fuller
- Sixth:** (Tie) Steve Vahey, Rich Robenseifner

### 11/12 Even Holes

- First:** Steve Ojeda
- Second:** Walt Bales
- Third (Tie):** Jack Leetham, Dick Dentino, Harold Reno, Rich Robenseifner
- Seventh (Tie):** Steve Engstrom, Malcolm Brown, Steve Vahey

### 11/18 4 Man 2 Best Ball

- First:** Lonnie Parmalee
- Kurt Petersen
- Walt Bales
- Fred Mecum

### 11/26 4 Man 1 Best Ball

- First:** Fred Mecum
- Walt Reimers
- Steve Engstrom
- and a Blind Draw

# PML Ladies Club 2014

BY MADELAINE SOUSA

This year has been amazing! We started the year with a small group of enthusiastic blanket makers at our January "Warm Winter Friends" where we made blankets for the Children's Shelter. February gave us the always wonderful "Wine & Chocolate" event. There is nothing better than wine, chocolate and dear friends. March was a tribute to Saint Patrick with our "Lucky Leprechauns" event featuring Sheppard's Pie & Irish Soda Bread. April brought us the "Spring Fashion Runway" with fashions by Joan's Boutique.

May was an absolute delight with the "Pastel Tea Party" honoring our past presidents.

June gave us the popular "Art on the Hill" with local artists displaying their wares for us.

In August we had an "Old Fashion Picnic" at the Marina.

In September we went just a little bit nuts

with our "A Little Bit of Talent Show". Not only were we entertained by several of our very own talented singers, but we also had fun with a series of fun skits by our members. October brought us a "Picture Perfect Home Tour". It was our fund raiser and we did well and had a lot of fun with it. In November was "A Winter Daze Fashion Show" with fashions by Trendz.

December was an extra special month with the "O Christmas Tree" annual Christmas Coffee. Our members were very generous with their donations of children's toys for the Groveland Christmas Basket Project, and we were serenaded by some of the "Hilltop Musical Kids". We also celebrated with "An Italian Christmas" dinner at the Grill. Now it is time for 2015 dues (\$15.00). Please send to: PML Ladies Club PO Box 100 Groveland, CA. 95321

What a truly good year!

# PML Lady Niners

BY SHARON KENYON

**ACE OF ACES FOR NOVEMBER** was Shirley Haliwell. She also won the Club Championship for 2014. Congratulations Shirley!

### WEEKLY PLAY RESULTS

Today was a beautiful, warm, shorts kind of day, and a perfect day for competition!

### November 6 "Putts" & "Ace of Aces Playoff"

- 1st Place:** Anne Toner – 14 putts
- 2nd Place:** Sarah Zimmerman – 15 putts
- 3rd Place Tie:** Faye Buckley, Shirley Haliwell, June Moore – 17 putts
- 4th Place Tie:** Carrie Carter & Judy Michaelis – 18 putts
- 5th Place Tie:** Nancy Brewster & Linelle Marshall – 19 putts
- Pars:** Carrie Carter #10, #14; Wanda Patterson #14, #17; Trudy Reid #10; Anne Toner & Shirley Haliwell #14
- Low Net:** Shirley Haliwell with 33, also winning the play-off for 2014.

### November 13 Glorious rain at last – no competition.

### November 20 "Turkey Dinner TIC-TAC-TOE"

- 1st Place:** Dotty Davis – 6 Bingos
- 2nd Place:** Marilyn Alexander – 5 Bingos
- 3rd Place:** Anne Toner – 4 Bingos
- 4th Place:** Mary Houser – 3 Bingos
- 5th Place:** Nancy Whitefield – 2 Bingos
- Pars:** #14 Marilyn Alexander
- Chip-in:** #17 Mary Houser for a par!
- Low Net:** Dotty Davis with 37.

### Hole-In-One

November 25 by Shirley Haliwell – her first. Outstanding & Congratulations!!!

The Humane Society of Tuolumne County youth book "Tails of Adventure" signed by authors and volunteers, Sharon Kenyon & Beth DeLuca is still available for \$10 to benefit the rescued/surrendered animals at HSOTC. The book features children's artwork inspired by their visit to the shelter. A copy is posted on the bulletin board in the ladies golf lounge, and at Dori's Tea House. Contact Sharon at 962-6197 to place your order.



**HIGH QUALITY LAPTOPS**

AND

**DESKTOP COMPUTERS**

Adware/spyware & virus removal • computer repair • data recovery

Logo Design

Web Design

High Quality

Business Cards

**sales@e-spon.com**

**www.e-spon.com**

**962-7110**

# JANUARY EVENTS CALENDAR



**Tioga High New Year  
5K Run/Walk  
January 3**



**Wine Tasting  
Dinner Buffet  
January 15**



**Winter Magic Series  
Marshall Magoon  
January 17**



**100 Years of Broadway  
Dinner Show  
January 18**

**1-3**

**SATURDAY - TIOGA HIGH SCHOOL**

**TIOGA HIGH NEW YEAR 5K RUN**  
Start/Finish line will be at Tioga High. Start time of the race is 9am and the entry fee is \$25. Wear your Favorite Ho Ho Holiday Socks, Wrap-up & Bring the Children, Harness your dog, Run/Walk with your Family, Neighbors and Friends. Support your local High School Basketball Team. Vendor tables after the race.

**1-7**

**WEDNESDAY - GCSD PRKNG LOT**

**FIRST WEDNESDAY BIRD WALK**  
Jeanne Ridgley leads the walk on GCSD property, over 200 acres, on the first Wednesday of each month. Meet the group in the GCSD parking lot at 8:00 AM. Bring binoculars and a birding field guide if you have one. Rain will cancel the trip. Walk will last about two-three hours. If you have any questions, call Jeanne at 962-7598.

**1-8**

**THURS - GROVELAND COM HALL**

**GROVELAND AREA PARTNERSHIP TOWN HALL MEETING**  
To learn more about our plans and projects (or to propose one of your own), mark your calendars and attend our next Town Hall Meeting 5:30 to 6:15 at the Community Hall. Meetings held bi-monthly on the second Tuesday of the month, beginning January 2015.

**1-10 AND 17**

**SATURDAY - WASTE MGMT SONORA**

**STYROFOAM COLLECTION**  
Once again Tuolumne County Master Gardeners will be collecting "polystyrene", we can no longer call it Styrofoam, on Saturday, January 10th and Saturday, January 17th, 2015 from 8:30 to 3:30 p.m. at Waste Management, 14959 Camage Ave in Sonora.

**1-15**

**THURSDAY - THE GRILL @ PML**

**WINE TASTING DINNER BUFFET**  
Featuring wines from Lavender Ridge Vineyard. Come out and enjoy some fine wine, tasty dinner selections, and some fun with your friends and neighbors. Only \$23 per person plus tax. Reservations are required. Call 209-962-8638 today to hold your spot for this popular event.

**1-17**

**SATURDAY - GROVELAND HOTEL**

**WINTER MAGIC SERIES - MARSHALL MAGOON**  
Known for his stage acts as seen in Tahoe casinos, on cruise ships, the Oakland Coliseum, and on TV. Has also served as a magic consultant for TV, film, and theatrical productions, and has created illusions for the Broadway shows Spamalot, Shrek the Musical, and Spider-Man.

**1-18**

**SUNDAY - THE GRILL @ PML**

**100 YEARS OF BROADWAY DINNER SHOW**  
Featuring the Sierra Sounds. Enjoy the sounds of Broadway and a tasty dinner of Top Sirloin, Veggies, Mashed Potatoes and a Chef's Choice Dessert. Show begins at 5PM. \$47 inclusive. Limited seating available. Call 209-962-8638 for reservations.

**1-31**

**SATURDAY - THE GRILL @ PML**

**ROTARY RED, WHITE & BLUE BALL**  
All you gentlemen dust off the tuxedos and get your partner a nice outfit for the gala evening. The event is a fund raiser for local community projects and a portion of the proceeds benefit the Wounded Warrior program. Door opens at 5PM for cocktail hour - dinner served at 6PM. Dancing after dinner.

## ENTERTAINMENT AT THE LOUNGE

**Saturday, January 3  
TWO STEPS DOWN**

**Saturday, January 10  
THIRD STAR WEST**

**Saturday, January 17  
ROCKSLIDE**

**Saturday, January 24  
KOOL SHIFTERS**

**Saturday, January 31  
ROTARY'S RED, WHITE,  
& BLUE BALL**

## SAVE THE DATE

**SATURDAY, MARCH 28, 2015  
PINE MOUNTAIN LAKE ASSOCIATION JOB FAIR**

10AM TO 2PM AT THE LAKE LODGE  
20270 PINE MOUNTAIN DRIVE

**JOIN OUR SUMMER/SEASONAL TEAM!**

JOBS AVAILABLE AT:  
THE GRILL • THE PML PRO SHOP • POOL • MARINA • LAKESIDE CAFÉ

# HOMES ON THE HILL

**Your Guide to  
Real Estate in the  
Groveland Area**



## YOSEMITE GATEWAY PROPERTIES

18731 Main Street • PO Box 606 • Groveland CA 95321

YosemiteGatewayProperties.com • (209) **962-5190**



**GEORGE VOYVODICH**  
Broker/Owner  
209-962-4185 Office  
gvoyvodich@gmail.com  
BRE license 01080130



**REBECA MARTINEZ**  
Realtor  
209-639-9467  
rebeca95321@gmail.com  
BRE license 01961957



**JUNE DEE**  
Realtor/GRI  
209-962-5190 Office  
209-962-7060 Home Office  
209-770-5190 Cell  
junedee@ymail.com  
groveland-real-estate.com  
BRE license 01700083

### LOTS & LAND FOR SALE

7/30 Ferretti Rd. Golf Course Lot, Grt Price \$24,500  
6/135 Septic in. Ready to build \$6,500\* - **SOLD**  
6/114 19805 Ferretti Rd \$12K  
13/117 Breckenridge \$3,500 - **SOLD**  
Unit 7 Lot 149 \$3,500  
\* Owner Financing Available

## Deardorff Realty

**ALL MY LISTINGS ARE SOLD!!!**

**IF YOU WANT TO SELL  
YOUR PROPERTY, CALL ME!  
I'LL GET THE JOB DONE!**

Contact Marilyn Deardorff-Scott - BRE 00396888  
**209-962-0718**

Constance Elliott, Real Estate Broker

760-567-7654 direct



FourSeasonsRM@hotmail.com

also serving you in the So. Cal. desert as  
H.K. Lane Broker Affiliate:  
Christie's International Real Estate

Palm Springs - Rancho Mirage  
La Quinta - Palm Desert - Sun City



**RE/MAX**  
Yosemite Gold  
Each Office Independently Owned and Operated

**Patricia (TISH) Fulton**  
REALTOR® / PROPERTY MANAGER  
BRE #00760019

18688 Main St. P.O. 808  
Groveland, CA 95321

Phone: 209-962-0837  
Office: 209-962-4080  
Cell: 209-985-0216

Email: Tish.realestate@gmail.com



For details go to:  
www.groveland-real-estate.com

**19120 Raboul Ct, 2/328**  
Single level Living 3B/2B, 1410 sf,  
Well Maintained - \$179,000



For details go to:  
www.groveland-real-estate.com

**20120 Ridgecrest Way 12/282**  
3B/1B - Charming chalet w/new comp deck and  
railings. patio area & so much more! \$149,900



**19047 Crocker Station, 7/115**  
Newer appl's, furnace, roof, deck, doors, fans, lights  
& much more. A great vacation home. \$140,000



**2/450**  
SELLING OFF ALL THE INVENTORY,  
THIS AD SPACE IS WAITING  
FOR YOUR LISTING.



**8/144**  
SELLING OFF ALL THE INVENTORY,  
THIS AD SPACE IS WAITING  
FOR YOUR LISTING.



**11/34**  
SELLING OFF ALL THE INVENTORY,  
THIS AD SPACE IS WAITING  
FOR YOUR LISTING.



**96%**

Consumer Satisfaction Rating  
www.sugarpinerealty.com



Listing Brochure

18727 Main St. #B • PO Box 792 • Groveland CA 95321  
209.962.7765 • fax: 209.962.5924



**LARGE "A" FRAME CABIN....**3 Bdrms, 2 Baths, 1,934 sq. ft. Lrg game rm down & bonus room up can be add'l sleep area. Beautiful custom cabinets in kitchen. Level lot with plenty of room for parking. Would make a great vacation rental. Call Dave or Ron, 7/227 S199,500 MLS#20141232



**LARGE HOME, SMALL PRICE....** Designed for 2 families/friends desiring seclusion. 4 bdrms, 3 baths, 2,506 sq. ft. Open floor plan + family rm. Lrg guest qtrs on 1 side of home, w/separate air/heating/water heater. Must see to appreciate all amenities. Call Dave or Ron, 13/123 S259,900 MLS20141981.



**NEW LISTING**

**BEAUTIFUL COURT YARD....**with koi pond and patio. Open & sunny floor plan. Large cozy fireplace in living room. Nice kitchen & dining area. 3bd/2b, 2 car oversized stick built garage w/workshop. Call Linda, S160,000 7/60 MLS#20142125



**GREAT HIGHWAY 120 FRONTAGE....**A one of a kind Historical barn over 100 years old and a cistern west of the barn that is visible from hwy. 14 acres, some of which borders BML property. Call Zane McDow 209-768-8889 S260,000 Hwy 120 Groveland MLS#20121958



**SOLD!**

**GOT IT ALL... 3 bedrooms, 3 baths rustic 2000+ sq. ft. beauty 2 wood burning stoves, panoramic views and privacy on 2 merged lots. Open floor plan for family entertaining and a huge master bedroom. Call Linda S249,900.00. 4/168 Point View MLS#20141576**



**BEAUTIFUL 1.7 ACRE LOT....**enjoy the views from this ez access, mild sloping down premium lot. Very private location in desirable Unit 11. Call Michael or Patty, S159,000 11/56 MLS20121723



**CHARMING CORNER LOT... Chalet with 3B/2B and plenty of space for RV & parking. Light, bright & cheery, vaulted ceiling and new paint. Large inviting deck off living room. Most furniture available. Storage under the house. Call Patty or Michael, S232,000 8/194 MLS#20141816**



**NEW LISTING**

**THIS PROPERTY HAS HISTORIC ....**mining ruins of the Mt. Jefferson Quartz Gold Mine. Zoned R-2. Call Michael or Patty, S99,900. L10 BLK 6 Deer Flat Rd. MLS#20142021



**PENDING**

**IMMACULATE CUSTOM BUILT HOME....** Plenty of Room in this 3bdr, 3bth, 3,064 sq. ft. Home. Open Floor Plan with Deck Access w/Views from five locations. New Carpet, Central Propane and Evaporative cooling on both levels to save on those PGE Bills. Call Dave or Ron, 8/111 S267,900 MLS#20140817



**PENDING**

**GREAT HOME FOR ENTERTAINING....**3bd, 3bth, Large bonus room, bedroom & bath downstairs, w/Blaze King Wood Stove. Open floor plan w/propane stove in great room. Three separate driveway's with plenty of parking. Call Ron or Dave, S174,900, 2/202 MLS#20140979



**THIS PROPERTY HAS....**two lots already merged with only 1 association fee. Land has a very gentle sloop up the hill. Nicely treed. Call Dave or Ron, S40,000 2/264 Wells Fargo MLS#20130775



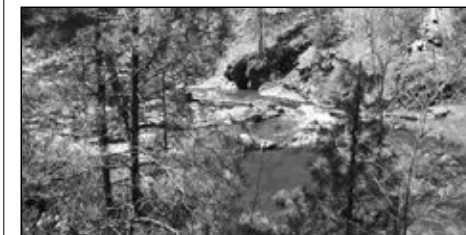
**A CABIN FOR ALL SEASONS....**High ceilings are a focal point for this 2 bd with a loft A Frame Chalet. Great views of the Mountains can be seen from its front deck, perfect for a weekend getaway. Call Linda S159,900 3/250 Pine Mountain Dr. MLS#20131008



**PARK YOURSELF UNDER THE STARS** on the deck or in the Hot-Tub. This home is in Pristine Condition. Split 3 Bedroom Plan, 2 Baths, 2 Car Garage and Well Maintained Decks. Close to Main Marina and Big Creek Hiking Trail. Call Dave Lint or Ron Connick S159,500 19970 Ridgcrest Way MLS#20140068



**SEVEN CEDARS....**Exactly 1/2 mile to the Marina. Fireplace/stoves in upstairs master bedroom & living room downstairs-plus central heat w/ separate controls up and downstairs. 3bd/2ba + 400 SF bonus room. Call Linda, S198,500 13/143 Pine Mountain Dr. MLS#20141402



**LAKE FRONT....**This lot nice size and has a great building site. Choose to build on flat or over the hill slightly to put on 2 story. Easement rd bottom of lot to access lake easier than from home above. Call Dave or Ron, S79,900 13/276 MLS#20105148



**SOLD!**

**GREAT RENTAL OR VACATION HOME...Rustic cabin with central heat & air on .58 acre. Lot is open with some trees. Lots of room to expand. Outside newly painted. 3bd/2ba Call Linda Willhite, S185,950 13/153 MLS#20140229**



**PREMIER SETTING...This lovely 2944 sq. ft. 4bd 3ba home nestled in the trees on approx. 1 acre is the perfect place to relax & enjoy nature. Approx 1,600 sq. ft. of covered deck to entertain friends & family. Call Linda 13/216 S429,000.00 MLS# 20140939**



**RELAXING RETREAT FOR A LRG. FAMILY... Remodeled 5bd/2.5 ba. + a bunk room. A cozy living room w/ brick fireplace, open beam ceiling & bonus room downstairs. Located on a Lrg. lot w/great setting. Call Linda, S225,000 3/331 MLS#20103754**



**NEW LISTING**

**BEAUTIFUL HILLTOP....**20 acre parcel with views north, east and west. Several building sites with great views. Historical sites of Quartz Gold mining operations in the Groveland area. Call Michael or Patty, S130,000 L8 BLK 6 Deer Flat Rd. MLS#20142007



**PENDING**

**A MAGNIFICENT HOME....**embedded and smothered in a huge pine forest. 3bd/2ba, there are 2 levels. The garage is a mans dream come true, housing 6 cars. Call Zane McDow for info, 209-765-8889. S650,000, 22476 Confidence Rd. Twain Harte



Emmett Brennan  
Broker/Owner



Dave Lint  
Realtor, Past  
Realtor of the Year



Linda Willhite  
Broker/Assoc.



Ron Connick  
Realtor



Patty Beggs  
Realtor



Michael Beggs  
Broker/Assoc.



Zane McDow  
Realtor



Elaine Stallings  
Realtor



Zana Looney  
Office Assistant

# YOSEMITE AREA REAL ESTATE

Paul S. Bunt Real Estate – BRE #01221266



**PRIME 5 ACRES READY TO BUILD ON**  
Move your RV onto this ready to build 5 acres. Includes; Well w/purification System. Underground PG&E to well & building site. 2 car Metal building Gar/Stor. Lvl build area.  
**\$168,000** 20965 Morgan Drive Lot #14



**BEAUTIFUL REMODELED CABIN**  
Flat .33ac lot. Lg deck off kitch. Carport & room for prkng! 2bd/2 full ba main lvng area w/wd burning fp. Lg kitch., wood flrs. Spiral stair to dwnstrs Bd, Bonus Rm, 1/2 ba & Indry. A must see!  
**Only \$183,000** 13024 Mueller Drive



**LOVELY OPEN FLOOR PLAN MOUNTAIN HOME**  
1,408Sq.Ft. 3b/2.5ba Knotty Pine Bm Ceilings. New paint, Wash/Dry, DW & remodeled Mstr Ba. Open Grt Rm. FP & Bay window. Cvr'd decks. Septic  
**\$195,000** 2/362 19358 James Cir.



**COUNTRY RANCHETTE ON LVL 1.49 AC**  
Fenced/cross fenced. 2 paved drives, 4 horse paddock w/auto water, lights, elect., hay stor. & 2 lg stor. sheds. 1,741SqFt. 4bed/2ba. 2 car attached gar. & xtra stor./pntry rm. Water well  
**\$319,000** 12/164 - 13334 Clements Road



**GREAT 2 LEVEL CLOSE TO MARINA**  
Combined 2 lots for .63ac. New roof in '13. Sq footage & stor. Grt Rm w/Open Beam wd ceil, lg deck. Lg kitch. Wd flrs, wall-wall carpet. Lvng rm w/air tight w.s. Section 1 pest comp, file on MLS. 12456 Mills Street

## REALIZE YOUR DREAMS WITH US



**CHRIS H. LAKE**  
BROKER ASSOCIATE  
209.768.6156 Cell  
chrishlake@gmail.com  
BRE #00946632



**JAMES (JIM) NAGLE**  
REALTOR  
209.770.5230 Cell  
jamesa.nagle@gmail.com  
BRE #01251085



**KRYSTAL BIGGER**  
REALTOR/GRI  
209-768-5944 Cell  
kbigger81@gmail.com  
BRE #01324944



**AIRPORT LIVING W/ HANGAR**  
Taxiway home. Lots of new renovations and up-grades. Live the dream with your plane. Huge hangar good for shop or car collector also.  
**\$449,900** 12/28 20934 Woodside Way



**SUPER LOCATION W/LAKEVIEW**  
close to Dunn Ct beach and golf course. 3bed/2 ba with 2 car garage. 1500+ sq ft. Perfect full time /vacation rental. Some furnishings included. **\$205,000** 19740 Pleasant View



**LARRY JOBE**  
REALTOR  
209.962.5501  
larryjobe1@gmail.com  
BRE #01444727

Call us today  
**209.962.5900**



**RYAN NIEDENS**  
REALTOR  
209.982.4224 Cell  
rniedens@gmail.com  
BRE #01940007



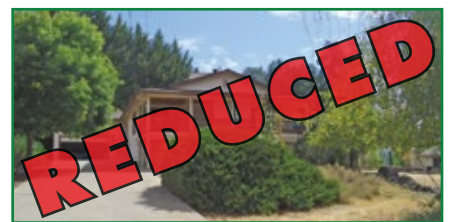
**SUPER DEAL WON'T LAST**  
2 homes in one. Main level 2 beds/2 bath. Custom Kit. front and rear decks. Lower level 2 beds/2 baths kit and bonus rm. 2 car garage, landscaping, multi car parking 3600+ sq ft **\$399,000** 12401 Tannahill



**MOVE IN CONDITION**  
2 bed/2 bath one level. Open kitchen/dining tile counters. Lots of storage. Wood burning stove for cozy winter nights. Low cost evap cooling. Covered deck. Most furnishing included. **\$129,000** 18996 Digger Pine



PO Box 675 • 18800 Main Street, Suite B  
Groveland, CA 95321



**LOVELY SPACIOUS HOME G.C. VIEW**  
2Bd/2ba on main lvl w/lg Bonus Rm/3rd Bd w/half ba. separate entry, wet bar & w.s. Lg kitch w/tile flr, pantry, brkfst bar. Formal Dining. Storage. Lg mstr ba. 2 car gar, shop & storage in basement. 1/421 12557 Mount Jefferson



**NEARLY 24 VIEW ACRES**  
City water, power to top of lot, septic in for 3 bedrm's. Driveway graveled half way up lot Gated, close to Groveland  
**\$200,000**



**PML LOT CLOSE TO COUNTRY CLUB**  
Septic in for 3 bdrm's Owner can build. Great location  
**\$39,900**



**ROOM FOR EVERYONE**  
Over 2500 sq ft Lg Mstr ste w/ba 2 sizeable guest bdrms & guest bath Gourmet kitchen, granite counters, separate dining rm, fp & bonus rm. Expansive decks, dog run 2 car gar. Close to lake. **\$425,000** 12542 Cresthaven



**CUTE/COZY MTN CHALET CABIN**  
Very close to PML Amenities. 1,280sq.ft. Huge Loft w/half bath. 2bdrms & full bath on main lvl. Updated. Stainless Steel Appls, laminate flooring, Tankless water htr & vinyl windows.  
**\$160,000** 2/2 - 20270 Pleasant View Drive

209.962.5900 • www.YosemiteAreaRealtors.com



MLS# 20142068

19638 Golden Rock Circle Unit 1 Lot 198

\$319,000

- Move-in Condition
- 3 Bedrooms
- 2 Full Baths + 1 Half
- Built in 2004
- Approx 2,082 Sq. Ft.
- 0.32 Acres
- Oversized 2 Car Garage
- Central Propane Heat/Air
- Close to Major Amenities
- Great Greenbelt View in Rear
- Owner Financing Available

PINE MOUNTAIN LAKE REALTY



"PJ"

An Agent Owned Company  
**Parker 'PJ' Johnson**  
 Owner / Realtor®  
 18919 Ferretti St. Ste. A  
 Next to Mar-Val Market, Groveland, CA  
 Office 209-962-7156 / Cell 768-6232  
 pj@pmlr.com BRE#01732298



Property Sales: (888) 962-4080 [PineMtnLake.com](http://PineMtnLake.com)  
 Rentals: (877) 962-7180 [YosemiteGoldVacations.com](http://YosemiteGoldVacations.com)



**Lauree Borup**  
 (209) 628-4600  
[Lauree@GoldRush.com](mailto:Lauree@GoldRush.com)



**Ann Powell**  
[AnnPowellRealtor@Gmail.com](mailto:AnnPowellRealtor@Gmail.com) 200-1692



**Eleda Carlson**  
 814-4123 [EledaCarlson@GoldRush.com](mailto:EledaCarlson@GoldRush.com)



**Tish Fulton**  
[Tish.RealEstate@Gmail.com](mailto:Tish.RealEstate@Gmail.com) 985-0216



**Tracy Billeb**  
**RENTALS**  
 962-7180

**Happy New Year**

**CASTLE OR CHALET?** This home is the palace of all chalets tucked into a quiet lake cove! You'll love all of the stonework and stamped concrete pathways framing the grounds and steps that lead to your own private boat dock. The main level of this home features the kitchen, living room, dining room and guest bedrooms. A grand interior staircase takes you up one flight to the magnificent master suite and a separate staircase takes you down to a spacious and inviting recreation room. **3-173 Rock Canyon \$999,000**



**BREATHTAKING TUOLUMNE RIVER VIEWS** from 43 acres at the gate-secured Graham Ranch. Farmhouse style built in 1994 & full of family fun possibilities. Fenced basketball court; pond; horse or goat corral, large patio, nicely landscaped. Wood & tile floors, gorgeous living room with slate rock hearth. 3 bedrooms + "office", 2 baths, 2665 sq ft. New roof. Separate 10 x 50 foot trailer for guests or in-laws. Good well and water system. Trail to river. **14010 Clements Rd \$525,000**

**HOME FOR THE HOLIDAYS YEAR ROUND**



A unique home designed for entertaining both indoors and out with an oversized kitchen, a living room and a family room, multiple decks, and the most beautiful grounds. It features over 2800 sq ft living area with four bedrooms, two dens and an exercise room. **4-287 \$367,500**



**PRAY FOR RAIN-BLUE SKIES WILL FOLLOW!** Low maintenance property and full-length covered deck. Pull the boat out of the extra deep garage and head to the lake, or walk to the Lodge beach. The bright vaulted great room with rich natural slate rock hearth will welcome you home. 3 bdbrn, office, 2.5 bath, 1923 sq ft, most furniture negotiable, stair lift chair. Septic system on half acre, built in 1996 **4-440 Cresthaven Dr \$238,000**



**COMMERCIAL BUILDING FOR SALE** Nearly 3000 sq ft of heated work space including a reception area/foyer, 5 private offices & additional open workspaces, 2 large warehouse/storage areas with tall bay receiving door, 300 sq ft loft storage area, a break room/kitchenette, 2 rest-rooms, Dual zone heating, backup generator & more. Parking in front & rear. **11-26 Asking \$275,000**



**RE/MAX REALTORS ARE ACREAGE SPECIALISTS!**

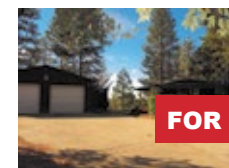


**IN ESCROW**

**9.9 Acres**

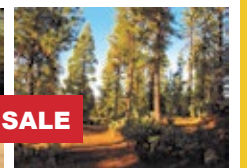


**50 Acres**



**FOR SALE**

**1.1 Acre**



**20 Acres**

**HIGH SPEED INTERNET**  
**866-378-8393**

**\$49**.95/mo.

VISIT OUR WEBSITE FOR MORE INFO.

[www.Conifer.com.Net](http://www.Conifer.com.Net)



**CONIFER**  
**COMMUNICATIONS**

# REALIZE YOUR DREAMS WITH US



**YOSEMITE AREA  
REAL ESTATE**

PAUL S. BUNT REAL ESTATE

**James (Jim) Nagle  
REALTOR®**

BRE 01251085

## Because You Deserve the Best

18800 Main Street, Ste B., Groveland, CA 95321  
 Direct Line: **209/962-5900** or **209/770-5230**  
 Residence: **209/962-0323** • Fax: **209/962-5904**  
 E-mail (Business): jamesa.nagle@gmail.com



### COUNTRY CLUB VILLA # 21

Very close to Grill, Pro Shop, Tennis and Pool. Perfect for the vacation get-a-way and Vacation rental. 1,900 sq. ft w/4 bedrooms 4 baths. Separate/Private Suite downstairs. Golf Course and Mountain views. Has Vacation Rental History. **\$157,000** CCV # 21 12735 Junipero Sera



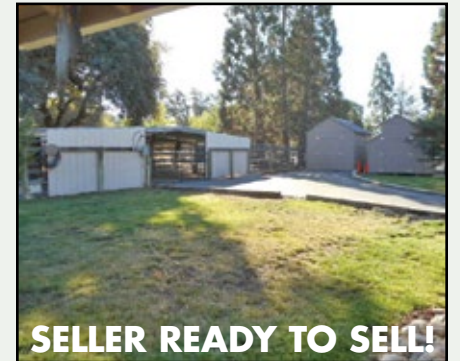
### PERFECT STARTER OR VAC HOME

Very nice, cute & cozy. Nice decks. Free standing wood burning fireplace & fenced area for pets. 1,404 Sq Ft of upgrades. 3bd/2ba & attached 2 car garage. **\$255,000** 3/354 12800 Cresthaven Drive



### LOVELY OPEN FLOOR PLAN MOUNTAIN HOME

1,408Sq.Ft. 3b/2.5ba Knotty Pine Bm Ceilings. New paint, Wash/Dry, DW & remodeled Mstr Ba. Open Grt Rm. FP & Bay window. Cvr'd decks. Septic **\$195,000** 2/362 19358 James Cir.



### COUNTRY RANCHETTE ON LVL 1.49 AC

Everything ready/setup for toys, RV's & Horses. Fenced/cross fenced. 2 paved drives each end of home - easy access to 4 horse paddock w/auto water system, lights, electricity, covered hay storage & 2 lg stor. sheds. Spacious 1,741SqFt. 4bed/2ba of room for family & friends. 2 car attached garage & extra storage/pantry rm add to home. Renovation throughout entire home. Kitchen renovation w/kitchen sink, granite counters, hickory cabinets, (dual fuel) gas/electric oven/range & microwave. Free standing propane f.p. Covered Patio. Water well for Irrigation Nice fenced back yard for pets. New Roof & Exterior Painting **\$319,000** 12/164 - 13334 Clements Road



### CUTE/COZY MTN CHALET CABIN

Very close to PML Amenities. 1,280SqFt. Huge Loft w/Half ba. 2 bdrms & full bath on main lvl. Updated. Stainless appls, lam. flrng, tankless water htr & vinyl windows. **\$160,000** 2/2 - 20270 Pleasant View Dr.



### 3BD/2BA SINGLE LEVEL CUSTOM

Single-level, built in 2005, with 2-car garage, attached by breeze-way. Great room has vaulted, knotty-pine ceiling. Granite counters, laminate flooring. Jetted tub, separate shower & double vanity in main bathroom. Guest rooms access decks. **\$275,000** 7/228 - 19092 Digger Pine



### PRIME 5 ACRES READY TO BUILD ON

Move your RV onto this ready to build 5 acres. Includes; Well w/purification System. Underground PG&E to well & building site. 2 car Metal building Gar/Stor. Lvl build area. **\$168,000** 20965 Morgan Drive Lot #14

## LOTS & LAND

**Large Merged Lot** .87 Acres Very close to Tioga High School. Easement off Ferretti Rd for easy access **\$9,600** 7-281 Ferretti Rd.

**Easy Build G.C. Lot** 13th fairway. Close to Dunn Ct. Beach. Seller financing available. **\$125K** 5/100A 12716 Mt Jefferson St.

**Prime Gentle Slope Lot** Touching the 6th fairway. Easy Access outside the gates. **\$24,000**. 5/201 Mueller Drive.

**.7035 Acre Gentle Down slope Parcel** Very Close to the PML Lake Lodge/Beach. W/Stately Oaks & on Quiet Street. **\$49,000** - Parcel 378 Big Foot Circle

**Parcel .526Ac.** Ready for Builder. Great Location. Outside gates and close to High School. Engineered Septic Solution done in 2005. **\$38,000** Parcel 290 19378 Ferretti Road. — **NEW LISTING**



### 3BD/2BA TOTALLY REMODELED

Great starter or vacation home. Turn key with new roof, windows, Synthetic stucco, decks, doors, solid Cherry hardwood floors, kitchen cabinets, granite with slate back splash, appliances, wine refrigerator, updated baths, new carpet in bedrooms. Nothing to do in this house but move in the furnishings and sit by the new cozy gas fireplace! Seasonal creek running on side of lot, great private decks all on nice wooded lot. **\$169,900** 7-143-12969 Jackson Mill PML

Intero Real Estate **530-277-9926**  
Tiffni Hald BRE#01964256

*Happy New Year to you and yours*



Dr. Donna Wines D.C.

## Wines Chiropractic Wellness Center Wholeness is Our Goal

Specializing In Children Of ALL Ages

Non-Force Wholistic Chiropractic • Acupressure Reflexology  
Nutritional Consulting • Neuro-Emotional Technique • Special Classes Avail.

Open Mon.- Thurs. • 18727 Main St., Ste. C., Groveland, CA 95321 • 209/962-4565

*"Call me for your  
real estate needs"*



**Liz Mattingly** • Broker Associate  
BRE#00709618

**209-962-1129** • **209-840-8020** Cell  
18687 Main St., Suite E  
Groveland, CA 95321  
lizmatre@gmail.com

**WWW.PINEMOUNTAINLAKE.COM**  
**FACEBOOK.COM/PINEMOUNTAINLAKECA**



Gina Giampietro Hernandez  
OWNER/REALTOR®  
BRE 01226555  
NOTARY PUBLIC  
408.506.6944 MOBILE  
209.962.7156 OFFICE  
GinaPMLRealty@gmail.com

*I'm Moving Properties...  
Let Me Move Yours*

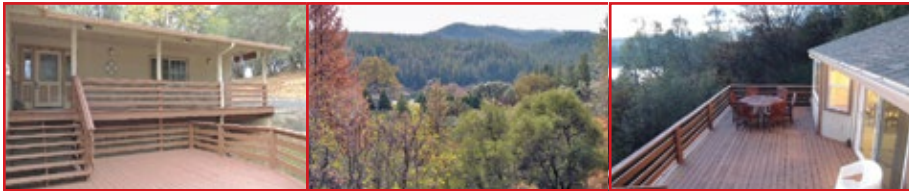


Happy New Year !!!



View listings & property search online at [www.PMLRealty.net](http://www.PMLRealty.net)

**PRIVATE DECKS WITH LAKE AND MAJESTIC MOUNTAIN VIEWS \$445,000**



**20596 QUAIL RIDGE LN. Unit 3 Lot 148** 3586 sf Beautiful/Spacious stone ext. w/3Bd (+ add'l sleeping area) 3.5Ba, 2 car (fits 21' boat), 4 Lg decks & lake views - July 4th fireworks front row seating. No side neighbors. .27ac, private setting—perfect getaway. Open Lv Rm w/wd burn f.p. & blt-in entertain. ctr, Lg MBdr on sep. lvl w/lg deck & views, jetted tub, sep shower, dbl sinks, lg walk-in closet, cathedral clngs, hard wood cabinet, lg kitch w/brkfst bar, gas stove, garden window, walk-in pantry, sep dining area w/views, dual zone HVAC systems, 2 h.o heaters, lg downstairs fam/game rm w/wet bar & huge deck. Lg under house space can be workshop or add'l storage. A perfect family home for full-time or vacation in PML near Yosemite. <http://www.tourfactory.com/1270271>

**BEACH~LAKE~FIREWORKS~FABULOUS !!! REDUCED!!!! NOW \$525,000**



**19881 DUNN CT. UNIT 1 LOT 269** .52ac. 60 seconds from front yard to Dunn Ct beach. Cul-de-sac w/ lake views from kitch, LvRm & Yr round covered front deck. Beautiful single lvl home, tall open bm wood clngs, 3 Mstr Bds (1 remodeled Ba) 2 garages, open kitch/great rm, stainless applcs, (cook, dine & entertain w/lake view) walk-in pantry, 2 merged lots, no side neighbors, + special front row seats to July 4th fireworks! Central H/AC, stone gas fireplace & custom wood mantel, brkfst bar, wet bar. Beautiful high windows view lg atrium Oak, newer roof, new decking off main Mstr Bdrm, new LvRm carpet, 6 sliding doors, beveled glass entry door, beautiful wood style lam. flooring in hallway & Mbdr 1. RV +pkg. By lake and g.c. in PML near Yosemite. <http://www.tourfactory.com/1154708>

**4000 SF CUSTOM LAKE HOME BEAUTY! ABSOLUTELY SUPER LOCATION \$899,000**



**12435 CASSARETTO CT. Unit 1 Lot 462** 4Bd 2.5 Ba, Wine Cellar, Family Rm/Ent. Area w/bar, tile floors & engnrd wd flrs w/60ft open beam knotty pine clngs, skylights, river rock f.p., 2 car gar, built-in BBQ cvrd patio w/misters, lg Mstr w/3x size closets, lake & tree views w/prop. stove, Mba dual sinks & sliding door. Lg Indry, Bonus rm can fit 4 queen beds or hobby rm. Dock w/wash station, aluminum boat & canoe, and pontoon boat available. Bd 1 has wine refrig. & front courtyard. Lg back deck low maint. synthetic, custom pine kitch cabs, lg isldn butcher block, granite cntrs & sink w/lg window lake view. By PML Marina store & seasonal consession, enjoy lake from back decks & boat dock. Perfect for 2+ families to enjoy! Buy with a friend or family today! <http://www.tourfactory.com/1170123>

**PANORAMIC VIEWS • 4BD (2 STES) • 3207 SF LIVING AREA + 1372 SF BONUS AREAS**



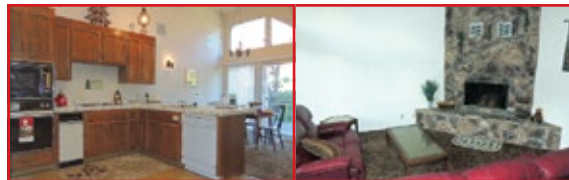
**11950 MOUNTAIN SPRINGS CT. Unit 13 Lot 226** .80 ac on quiet Cul-de-sac. 4Bd 4Ba. Mtn & tree views. Lg open lvng rm w/tile & wd flr beaut. inlaid, stone hearth f.p. w/cstm wd mntl, frml entry w/elev. to 3 flrs. Lg kitch w/SS applcs — Jenn Air 6 burner gas stove-top + wrrm, dbl ovens, granite cntrs, lg pntry, stnd glass light, grdn wndw. Sep exer. rm, indoor pool rm w/heated "Endless Pool", lawn & flwr grdn bkyrd & wd playhouse. 4 car gar w/dbl depth to fit 4 cars or RV on upper prkg. 1 lg & small car or trailer pkg in lwr gar + extra prkg. Timbertech® deck. 690 sf wrkshp. Mbr w/flr to clg stone gas fp, priv. deck & hot tub, dbl shwrs, skylight, tile flr, dbl closets. Wd flrs, high clngs, stnd glass light. Views from 3rd level "cupola" with elev. access. <http://www.tourfactory.com/1218839>

**BEAUTIFUL VIEW AND LARGE LOT \$192,000**



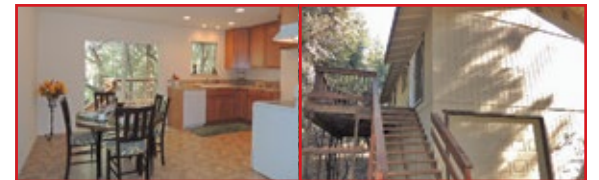
**19781 COTTONWOOD ST. U6 L81** 1838 sf 3Bd/2½ ba, 2 car on septic w/LvRm & Fam Rm, beautiful natural landscape lot backs up to trees & creek in PML. Long flat driveway away from street, serene surroundings. Main Lvl living, grt rm w/ open kitch, brkfst bar & garden window. Wood burning free standing f.p. Tile entry, sep laundry rm w/lg pantry stor. Lrg Mbdr walk-in closet and French door to back deck. <http://www.tourfactory.com/1248347>

**NEXT TO GOLF COURSE \$125,000**



**12699 JUNIPERO SERRA #3** Approx 1516 sf w/2 Mstr Bdr + additional Full Bath. Spacious Townhome w/Golf and Tennis, Swimming pool and Country Club steps away from your front door in beautiful PML, near Yosemite. Enjoy the lake & PML amenities full-time, part-time or have as investment rental just a short drive from busy Bay Area. Lg open kitch/sep dining, lg living rm w/stove wood burn f.p., 2 MBdr + full guest bath, 3 decks, Central H/AC, Tri Level. <http://www.tourfactory.com/1248349>

**MOVE IN READY – OUTSIDE OF PML \$162,500**



**18548 NORTH DOME CT. GROVELAND** 1147sf 3Bd/2Ba, 1 car .42ac, septic. New paint inside/out, kitch new w/granite cntrs, maple color cabnts, new sink, faucet & disp, new elec stove, new recsd light, new flrng, new LvRm clng fan. New lighting & doors, carpet, roof, deck rail front at front cement patio, ctrl heat, sinks, shower/tub, wtr htr. Lg deck off kitch. Cement drive to 1 car garage. Natural landscape, just a minute drive from downtown. Ready to move right in! <http://www.tourfactory.com/1248346>

**BEAUTIFUL HOME IN GREAT LOCATION! \$234,000**



**19452 PLEASANT VIEW DR. U1 L115** 2062sf 3Bd/2ba 1 car, septic, deep circular paved driveway w/private garden & beautiful private landscaped yard close to golf & Dunn Ct Beach. LvRm, Fam Rm, Sun Rm, granite kitch cntrs, tile flrs & carpet. Wood burning f.p. stone hearth, vaulted clng, indoor laundry, central Heat/AC. Remodeled MBath, Lg shop/storage area off garage. Lg front terrace deck/patio. 5yr old 30/yr roof, cell phone svc & Hspeed internet Avail. <http://www.tourfactory.com/1248342>

**GORGEOUS GREAT RM W/BEAUTIFUL VIEW \$384,000**



**12660 EAGLE CT. Unit 4 Lot 492** App. 2400sf cul-de-sac, dbl lot w/views. RV + boat prkg. Courtyrd, 2 decks, hot tub, wd fp in Grt Rm & MBdrm. open beam tall clngs, .5ba on main lvl, 10' isldn, tile & hardwood flrg, Mbdrm upstrs lg ba, sep tub/show & dbl van + Indry chute. 2nd Mbdrm dnstrs + Family Rm w/ wood flrs, bonus enclosure off of garage w/bench. See virtual tour at <http://www.tourfactory.com/1167703>

**BEAUTIFUL BUILDABLE LOT IN PML \$35,000**

**20520 FERRETTI RD. U3 L29** 2 lots merged into one. 474ac very nice buildable lot w/nice landscape, near Pine Mountain Dr. up off main rd on easement. Water & elect. available & can be on septic subject to verification from GCSDistrict. Asking \$35,000 or make offer.



**NEED TO BUY?**  
**NEED TO SELL?**  
**CALL GINA!**  
FREE HOME STAGING ASSISTANCE

18919 FERRETTI RD., SUITE A. • IN THE MARVAL MARKET PARKING LOT



**Pine Mountain Lake Realty** *An Agent Owned Company*

1/15



**Bruce 'Red' Rossio**  
Broker/Owner  
BRE#01429140



**Barry Scales**  
Broker/Owner  
BRE#00451837



**Lynn Bonander, GRI**  
Owner/REALTOR®  
BRE#00683485



**Val Bruce**  
Owner/Broker Assoc.  
BRE#00179924



**Parker 'PJ' Johnson**  
Owner/REALTOR®  
BRE#01732298



**Gina Hernandez**  
Owner/REALTOR®  
BRE#01226555



**Marc Fossum**  
Owner/REALTOR®  
BRE#01956242



**Location ~ Location**  
**Near Main Marina!**  
19762 Butler Way  
8-218  
**\$189,000**  
MLS# 20142038

3Bd/3Bth, Approx 1,600 SqFt. includes Approx 500 SF Bonus Rm. Inside Laundry, 600 SqFt Deck, Paved Circular Driveway, Lots of Parking, Cabin Look on Main Level and 2 Yr old Modern Addition Down Stairs. Exquisitely Maintained Inside & Out. Most Furniture Included.



**Office 209-962-7156**  
**Fax 209-962-6710**  
**18919 Ferretti Rd Ste. A**  
**PO Box 738, Groveland, CA 95321**  
**www.pmlr.com**

Enjoy it in your  
New Home!



**Good Buildable Taxiway Lot !!**

Build your Dream House and Fly Home!  
Enjoy all the Amenities of Pine Mountain Lake. 0.56 AC 12-45 \$275,000  
MLS#20141840



**12725**  
**Cresthaven**  
**4-510**  
**\$229,000**

3 Bd/3 Bths, 0.60 Merged Lot. Open beamed ceilings, split level, Shop & lots of extra storage area for boat or other toys. Heat pump for heating & Cooling.  
MLS# 20121545



**Spacious Ranch**  
**Style Home**  
21179 Hemlock  
12-124  
**\$395,000**  
MLS# 20130073

4 Bd/3Bth/2 Car Attached Garage, 2760 Sq Ft, Single Level, Flat 1.60 acres, Great Rm, Cathedral Open Beam Ceiling, Large Kitchen, Breakfast Area, Sun Rm, Guest Suite, AC, Central Vacuum, Zoned for Horses .



**Fantastic**  
**Mountain**  
**Chalet**

19411 Pleasant View  
1-326

2 Bed + Lrg Loft for Add'l Sleeping & Family Rm Combined, Extra Large Master Bdrm on Main Level, 2 Car Garage, Located Close to All the Amenities on an Extra Lrg Lot w/Seasonal Creek & Beautiful Rock Formations.  
**Only \$179,900. Be Quick it Won't Last !!!**



**For Your Golf**  
**Course Dream**  
**Home!**  
12630 Mt Jefferson  
5-109  
**\$49,000**  
MLS#20140895

Beautiful Lot w/Views of 11, 12 & 13 Fairways. This Super Price may allow you to build a new Home to your liking, rather than buying an existing Home. Ck out cost per SqFt for nicer Golf Course Homes Sold or Listed to confirm this. We can help you do this!



**Clean & Neat**  
**Single Level Cabin**  
**\$149,999**  
12400 Tannahill  
Drive 1-52  
MLS#20131661

2 Bd/2 Bth, 2 Car Garage, Approx. 1248 SF on 0.26 Acre, Built 1979, Great Rm, Central Propane Heat & Air, Inside Laundry, Septic. Near Main Gate and Easy Access to all Amenities.



**Great Little Fly-**  
**In Home**  
Near Pine Mountain  
Lake Airport  
20843 Ferretti Rd  
3-490  
**\$164,000**

3 Bdrms/3 Bths, Approx 1744 Sf, Built in 1981, .39 Acre Lot, Built-In Breakfast Bar, Wood Burning Stone Fireplace, Open Dining Rm & Kitchen, Very Large Family/Game Rm or 3rd Bedroom Downstairs. Some Furnishings Included. Peaceful Surroundings!



**Custom Home/**  
**Airport - Quiet**  
**Back Taxiway**  
**\$599,000**

Lovely 3 Bed/ 3 1/2 Bath, Gourmet Kitchen, Upper level Wet Bar with Icemaker & 360° View. Three Sided Decking, 4 Car Garage. Hanger with Bed & Bath Apartment with a 42' Hanger Door. RV Parking with Hookups.

21101 Jimmersall Lane 12-51



**Cozy Log**  
**Cabin!**  
**\$119,000**

MLS#20131745

12804 Cresthaven 3-353  
Adorable 2 Bd/2 Bth, Single Level, Approx 1026 SF, Approx. .40 Acre Home, Built in 1989. Great Room, Large Kitchen, Central Propane Heat, Evaporative Cooler, Inside Laundry, Covered Front Porch, Deck in back.

**LOTS for SALE!!**

- 10/76 - \$2,000 View of Greenbelt
- 3/489 - \$5,000 Close to Airport & Stables
- 5E/17 - \$49,000 Sale by Owner Golf Course Lot
- 5/109 - \$49,000 Great Golf Course Lot with Views of Three Golf Course Holes
- 6/146 - \$12,500 Very Buildable-Quiet Surroundings
- 7/275 - \$29,900 3 Beautiful Merged Lots, Quiet
- 8/137 - \$7,999 Nice Lot in a Good Location
- 12/45 - \$275,000 Good Buildable Taxiway Lot
- 13/257A- \$49,500 3 Merged Lots - Beautiful Setting & Backs Up to Greenbelt



**HAPPY  
NEW  
YEAR**

# Pine Mountain Lake Realty

*An Agent Owned Company*

**Lynn Bonander, GRI Owner / REALTOR®**

18919 Main St., Ste. A, Groveland, CA

Office 209-962-7156 / Cell 209-484-7156 [lynnb@goldrush.com](mailto:lynnb@goldrush.com) / [www.pmlr.com](http://www.pmlr.com)



BRE# 00683485

1/2015



*Move-In -Ready*

*Single  
Level Home*

12899 Greenvalley Cir  
3-392  
\$243,000

Picturesque setting nestled in Beautiful Oak Trees, Immaculate & Well Maintained 3 Bed/2Bth Home. Open Floor plan, Island w/Breakfast Bar. Central propane heat and Central A/C, Air tight wood stove w/brick hearth. Separate Laundry Rm w/deep utility sink. 2 year old-30 year comp roof. New Trex Stairs/Railings. Freshly painted inside & out... Nice Large Back Deck to Enjoy the Natural Beauty & Wild Life. **Most Furniture, Washer/Dryer & Refrigerator Included!** MLS# 20141050



## PRIME LAKE FRONT LOCATION!

This is 1 of the Best Deep Water & View Lots Pine Mountain Lake has to Offer! This Delightful 3 Bd/2 1/2 Bath, with Large Bonus Rm & a Cozy Reading Area Home Provides an Extraordinary Living Experience for All Seasons. Recent Remodeling has put the Finishing Touches on this Outstanding Offer! Just installed, a new Ductless AC Unit w/ individual controls for each room! Unbelievably offered at **\$699,000 4-109 20616 Longridge Ct. MLS20142132**



*19631 Cottonwood St - 6-38  
GREAT VACATION HOME!*

**It's a Cutie!** Hexagon Style, 3 Bed 2 Bath, and Den. Finished Loft Accessible by Ladder, a Great Kids Hide-a-way. New Upgrades: Windows, Evap AC & Water Heater. FS Fireplace, Cathedral Ceilings, Skylights, Ceiling Fan, Inside Laundry, Open Kitchen, Dining, & Living Room. Refrigerator Included \$149,000  
MLS# 20140610



**19650 Butler Way 8-211**

*Lots of charm and a Warm Feel.*

This is a Great Get-A-Way Cabin. Single Owner, Near the Main Marina & Most Amenities. 4 Bedrms (2 w/o Closets) 2 Baths, 1 Car Garage, Living Room w/Pellet Fire Place, Upper Level Central Electric Air/Baseboard Heating, Master Bedroom with Walk-in Closet, Open Beam Ceiling, Inside Laundry, Special Touches, Great Views from Deck. **\$169,000 MLS#20140900**



*Short Walk to Lake/Beach*

*Enjoy this Peaceful Setting!*

**12597 Cresthaven 4-429**

3 Bed/2 Bath, Approx. 1,488 SF, 0.49 Acre, Sits back from the Road, w/a lot of Parking. 2 Levels, Central Propane Heat/AC, Great Rm, Wet Bar, Fireplace, Knotty Pine Ceilings, Large Master Bdrm w/private Balcony, Walk-in Closet, Patio and Separate Entrance. Great Home and Location for a Vacation Rental. **Furniture Included. \$199,999 MLS#20131098**



*A Rare Find!*

19800 Elder Lane

**\$125,000**

MLS#20141914

*Groveland 2.55 Acre Property*

This Beautiful Pine & Oak Forested Property is completely fenced w/wildlife fencing. 2 Driveway Accesses. Property borders BLM land and a 15 acre parcel. Zoned RE-1 which allows for 2nd home. This 1 Bdrm/1 Bth Home was Built in 1953 & Remodeled in 1997 w/permits. 2 Sunrooms. **A fixer Upper w/ great Potential.** AT&T internet Access in place. 1 car Detached Garage w/220 Outlet, storage shelves, work bench & heavy duty storage cabinets. Koi Pond, Chicken Coop, Sold "AS-IS" Come See!



*Ranch Style  
Home  
Room for it All!*

13360 Clifton Way  
12-156

**\$475.00**

MLS#20141581

4 Bed/2 1/2 Bth, Approx 2000sf, Approx 1.09 Acres, 2 Car Attached Garage, Cov'd Deck. Great Rm, Kitchen Island & Breakfast Bar, Inside Laundry, Central Propane Heat, Evaporator Cooler, Walk-in Closet & Dual Lav in Master Suite, Ceiling Fans. Plus a 2500sf Shop Fully Equipped for Auto Restoration w/heated Office area & 1/2 bath. On premises gate allowing direct access to the horse trails. A Must See!! **Listed by Barry Scales.**



3 Bedrm/3 Bth,+ Bonus Rm Used as 2nd Master Bedroom (w/out a closet due to septic restrictions) is Located only minutes from the Lake Lodge Beach. This **0.69+ Acre** sewerd Lot is adorned w/a variety of trees creating a framework for privacy & serenity. The open floor plan boasts a high cathedral ceiling, a stone fire place with a Fisher insert & Built-in Book Case. The 1st Master Bdrm is a private suite upstairs with an alcove entry. Many Upgrades!!

*Beautiful  
Inside & Out*

12505 Pine Brook Way  
4-460

**\$315,000**

Approx 1,872 sf  
MLS# 20142112

### LAND FOR SALE!

2.3 Acre Parcel - **Reduced! \$75,000**  
Whites Gulch

4/128 - \$110,000 **Lake Front with  
Beautiful View!!**

6/231 - \$15,000 **Septic Lot- Nice  
View**

6/183 - \$35,000 **1/2 Acre + Easy  
Build**

8/71 - \$15,000 **Beautiful Lot -  
Good Location**

8/137 - \$7,999 **Butler Way**

12/101 - \$125,000 **1.09 Acre Beautiful  
Level Lot near Air-  
port & Stables**

# Helping Hands News

## HELPING HANDS HAPPENINGS

BY JOYCE SMITH

### Welcome to 2015!

We hope our not being open on Monday isn't too much of a hardship on you. It is a matter of changing your thinking about running down to the store to see if we might have that little something you thought you needed right now. We will all adjust.

Christmas is such a busy time, for everyone, but especially stores everywhere. The many, many items that are so seasonal have to be put out now and if not sold, handled again. But we really do enjoy Christmas, seeing happy faces and interacting with our friends.

Our Dec. 11th store closing, General Meeting, Christmas Party and Gift Grab was a great event. We were able to have good participation of all/most of our volunteers. Mark your calendar as we will be closed on Thursday, Jan. 8th when we will have our Volunteer appreciation Luncheon at The Grill. That will pretty much take care of our parties for awhile.

New officers-Vice President- Dart Woodruff; Recording Secretary-Dawn Silva; Parliamentarian-Jackie Baker will join with current President-Dale Elliott; Corresponding Secretary-Amanda Klaahsen; and Treasurer-Tom Carman, to make up our Board for 2015. This sounds confusing, but officers serve two year terms, so we always have some new officers coming on and some older officers going off, to assure continuity to our organization. So, we are ready to continue our work here in our community.

Thanks are in order to all of you for your donations and patronage. Thanks to all our volunteers and our Board for the many, many hours and hard work they put in. TOGETHER WE DO A LOT OF GOOD!

Best wishes for 2015.

See you at the Store or Barn!

### WHERE DOES IT GO?

## Helping Hands End of Year Report

BY PATTI BEAULIEU

We are often asked "where does the money go?" that we earn by selling the donated items from the generosity of the community, travelers and week-enders. We have a very arduous budget process that takes the Board of Directors many hours to finalize. Although everyone who works or is involved at Helping Hands is a volunteer, just like any business, we have many operating expenses just to keep the open doors open: rent, utilities, supplies, garbage pick-up, custodial costs, maintenance, insurance, bank charges, just to name a few.

In addition to paying our operating expenses, in the calendar year 2014 we made the following donations:

Local Food Banks .....\$10,200.00  
 Kiwanis Kids Shopping Spree ...\$5,000.00  
 Tioga/Don Pedro Scholarships ..\$11,000.00  
 Tioga High School – various ....\$3,650.00  
 Tenaya Elem School – various ..\$20,500.00  
 Other agencies – Meals on Wheels; STCHS; Hospice of the Sierras; Yosemite Chamber of Commerce; ROOFBBS; Troops Program; etc.....\$5,500.00  
 Other requests.....\$3,000.00

As you can see, your donations and your purchases are certainly put to good use. The proceeds from the sale of the donated merchandise, the hard work of our family of dedicated volunteers and the support of the Community allow us to give back in this monetary way.

We will continue to make these types of donations in 2015, so please remember to donate your 'good or better' condition items and shop for the best and most varied selection of merchandise on the hill. In turn, you will directly be responsible for the support Helping Hands so generously gives back to the Community.

## TROOPS PROGRAM

BY MARY BROWN

Hope everyone had a wonderful Christmas Holiday with your family and friends. Thank you everyone for all your donations over the past four plus years. Because it is becoming increasingly more difficult and costly to obtain names and addresses of soldiers, and the donations have slowed down considerably, the Helping Hands Board of Directors has decided to discontinue the Helping Hands Troop Program. As of Dec 31st Helping Hands store will no longer accept donations for the Troop Program. Please be assured that everything that has already been donated will be sent. Thank you again, everyone, for all you have done.

# Garrotte Lions Grab for Cash

BY CATHY LEETHAM

Each November, Black Oak Casino kicks off the holiday season by inviting charities and non-profit organization a chance to participate in their "Community Grab for Cash". On November 13th, Groveland's Garrotte Lions Club was chosen as one of 11 non-profits out of 60 applications to participate. Their president, Frank Oyung, had 30 seconds in the cash cube to grab as much of the whirling \$5,000 as he could—he grabbed \$1,450! This day will long be remembered by members of the club.

With today's economy, fundraising efforts have been difficult; people have only so much to spend and so many organizations



From left: Jim Glaves (seated), Lions Wanda Day, Kay Glaves and Frank Oyung, Ron Patel, General Manager – Black Oak Casino.

needing donations. So this money will increase the Garrotte Lions Club's ability to help those in the community. We assist the needy in obtaining eye exams and eyeglasses; help the hearing impaired obtain hearing aids; provide scholarships for the local elementary and high schools; among other projects.

# "Wheels" Welcomes New Clients

BY ALEX WYLIE

"Wheels" is Groveland and Big Oak Flat's transportation service for seniors (60 and older) who are unable to drive or do not have family available to drive them to destinations in Groveland and for medical appointments in Sonora. We are very pleased to announce, as we enter our third year of operation, as a result of a strong increase in the number of our volunteers that we are again able to welcome new clients to our program.

If you or anyone you know needs transportation we are here to assist you. We operate from Monday through Friday

from 9.00am until 5.00pm. We'll pick you up at your home and take you to medical appointments, the library, post office, banks, grocery store and shopping in the Groveland area. We'll also drive you to medical appointments in Sonora and return you safely to your home all at no cost to you!

Our volunteer drivers are the best. They are friendly caring people who really enjoy working with our clients and look forward to the days they drive for "Wheels".

To sign up for the program call 209 962-6952 and leave us a message. We'll call you back promptly.

# Pine Cone Singers Celebrate the Season!

BY LINELLE MARSHALL

The Pine Cone Singers brought smiles to all who attended last month's winter concert performances at Evangelical Free Church in Groveland. Many thanks go to all who helped make our concerts a success: Music director and composer Ron Randall; musicians Lawrence Drummond, Jeff Bay and Fred Faiella; fabulous keyboard work of Christopher Hewitt; technical support from Richard McKey, Bruce Carter, Miguel Maldonado and Wayne Phillips; physical set-up crew headed by Frank Oyung; Kathy Seaton, poster and program design; Zoo-phonics, printing; concert attire, Frank Jablonski

& Gloria Young; Shirley Brasesco, Anita Millard, Linelle Marshall and Sandra Menacho for extra rehearsals; Joanne Foster, refreshment coordinator; Karen Lopes, "sunshine"; Susan Fisher, kazoo procurement; Sally Salinas, event coordinator & chorus representative; board members Luke Sullivan (Pres.), Ken Steiner (V-P), Bob Swan (Sec't.), Sandra Menacho (Treas.). If I've inadvertently omitted any names, please forgive my scattered and aging brain!

We are also grateful to the following sponsors for their financial contributions: Black Oak Casino, Helping Hands,

Priest Station Café, Charles & Alice Stoll, Yosemite Bank, Shirley Brasesco, Groveland Pharmacy, Frank & Karen Jablonski, Moore Brothers Scavenger Co., Pine Mountain Lake Association.

The singers will take a well-deserved break until our first rehearsal for our May concerts, on Tuesday, January 27, 2015, 3:00 PM, at the Groveland Community Hall. If you are interested in joining the choir, contact any Pine Cone Singer or Luke Sullivan (962-5952) for more details. The dates for the May performances are May 14, 15, 16 and 17, 2015.

## Rotary Red, White & Blue Ball

BY RUDY MANZO

It is that time of the year again. The Rotary Club of Groveland will hold the annual Red, White and Blue Ball on January 31st. The time has come for all you gentlemen to dust off the tuxedos and get your partner a nice outfit for the gala evening.

The event is a fund raiser which not only helps the club to continue with local community projects, but a portion of the proceeds will be donated to the Wounded

Warrior program.

The door at the Grill will open at 5:00 PM to kick off the cocktail hour and dinner will be served at approximately 6:00 PM. After dinner you will have the opportunity to show off your fancy dance steps to the music of Home Grown. This promises to be a great evening so don't miss it. If you do not have your tickets already, contact Jim Thayer at 962-5007.

## Calling All Wanna-Be Line Dancers!

BY SUE SALNICK

High Country Line Dancers had a great year with more dancers than ever! In June, we held a little "graduation" party for our steadfast beginners who, over a 6-month period, had fun learning some very intricate steps to about 20 dances. Way to go, dancers... that takes commitment! In addition to line dancing, we celebrated each other's birthdays, Halloween, and Christmas with dance parties, goodies, and pot lucks, a wonderful way to share and get to know one another a little better.

We dance every Tuesday night at the Groveland Community Hall starting at

7:00 p.m. Beginner lessons are taught from 7 to 7:30, but everyone is welcome to stay and learn an intermediate dance from 7:30 to 8:30. We ask for a \$2 donation per week.

So if you've always wanted to try it, come alone or bring a friend! You don't need a partner, and you don't need to have ever danced before. It's a terrific social outlet, not to mention good exercise for the body and the mind. You will have a grand time!

For more information, call Sue Salnick at 962-4155.

## Christmas Bucket of Goodies for GCSD Customers

GCSD Customers can pick up a free 5 gallon bucket of goodies from the District on a first come, first serve basis (one bucket per customer). GCSD was given 200 bucket kits from a State agency. Pick yours up during regular business hours, 9 AM to 4 PM, Monday thru Friday, at the GCSD office, 18966 Ferretti Road.

Some find it hard to believe GCSD is so generous, but it is true. You might think of this as a Christmas present without wrapping. Here's what's in the Bucket:

- 1 Garden Hose Multi-Function Spray Nozzle
- 2 Low Flow Shower Head
- 3 Toilet Dye Leak Detection Tablets
- 4 Kitchen Sink Aerator Nozzle Kit
- 5 Bathroom Sink Aerator Nozzle Kit
- 6 GCSD Water Saver Bathroom Mirror Logo

The Bucket also includes helpful pamphlets:

- 1 The Water Conservation Toolkit
- 2 10 Ways to Conserve Water
- 3 How to get GCSD's \$100 Toilet & \$20 Shower Head Rebates

Before your New Year's party, don't forget to place the Water Saver logo on your bathroom mirror. It will help sober up your party guests. How so? The logo background is transparent, so the message on the logo shows up "Double Vision." Even your stone-sober guests will stop drinking when they see it.

Remember, use your new bucket for rainwater or greywater collection. Additional helpful information on water conservation can be found at GCSD.org. Please keep up the good work on water conservation. It is essential for receiving grant funding that helps keep your rates in check.

Happy New Year to all from GCSD's Water Conservation Committee.

## Water Conservation Saves Each GCSD Customer \$515

BY STEVE PERREIRA

Paradoxically, because GCSD Customers have been stingy like Scrooge with their water use, Santa California, et al, have taken notice and rewarded the District with \$1.75 Million in State and Federal grants, a Christmas present valued at \$515 per customer! Indeed, conserving water pays off.

In early 2014, our water wholesaler, San Francisco PUC, notified GCSD that, coming January, 2015, our water supply would consist of a blend of Cherry Lake and Hetch-Hetchy waters, henceforth requiring filtration. The equipment to do this and installation would cost the District up to \$1.75 Million.

With the clock ticking towards a year end deadline, GCSD's management and staff worked day and night to design the systems and make the grant applications. Deal Breaker: No

grants unless the District consumed 20% less water in 2014 compared to 2013.

GCSD's 3400 customers stepped up with water conservation exceeding 20%. Meanwhile, statewide conservation averaged only 11.5% through October.

Please dear customers, remain frugal with your water use, because future grants from the State and Federal government, including the recently passed Water Bond, require Water Districts to demonstrate outstanding water conservation in order to be eligible. Our water conservation results are monitored by monthly reports to the State Water Board. Helpful information on water conservation can be found at [GCSD.org](http://GCSD.org).

A very Happy New Year to all from GCSD's Water Conservation Committee.

# SEASPRAY

## AWNINGS & BOAT COVERS

### 533-4315 • 536-9397

Lic. #981187



**TUOLUMNE COUNTY'S NUMBER ONE SOURCE FOR**

Custom Retractable & Fixed Awnings  
Boat Covers & Bimini Tops  
Boat Upholstery & Carpet  
Recovers & Repairs

[www.seasprayawnings.com](http://www.seasprayawnings.com)

[www.seasprayboatcovers.com](http://www.seasprayboatcovers.com)

**FOR IDEAS AND ESTIMATES CALL DOUG PARRISH**  
14769 Mono Way, Sonora • 13893 Tuolumne Rd.

## Engaging Our Community in the Growth of the Groveland Area

BY CHRISTIAN DE RYSS

The Groveland Area Partnership is building momentum and it is delivering on its Goal. You may have attended one of our Town Hall Meetings. You may already be member of a project we support. Or maybe you're learning about us for the first time. Here is what we're up to...

Our goal is to make Groveland a destination that offers a rich cultural experience that emphasizes the area's natural environment. We want Groveland to be known for its outdoor and cultural activities, for its focus on a sustainable environment and for its appealing visual aesthetics, in keeping with our mining and railroad heritage. Join or lead projects and support a year-round, family-oriented community that entertains, educates and inspires its residents and visitors.

To learn more about our plans and projects (or to propose one of your own), mark your calendars and attend our next Town Hall Meeting – Thursday, January 8th - 5:30 to 6:15 at the Community Hall. These meetings are held bi-monthly on the second Tuesday of the month, beginning January 2015.

Before I get to a partial list of our projects let me introduce The Groveland Area Partnership. We are a self-sustaining, nonprofit entity that is a hub for communication services, funding, resources and contacts that supports community project leaders. We are your neighbors. We share a love for the Groveland area.

### SIDEWALKS IN GROVELAND?

Due to December weather (yay), the workshop for public comment on the Pedestrian Access Design is re-rescheduled for January. This project, funded by Tuolumne County, is nearly complete including recommendations and budgets with sufficient detail to achieve the next steps toward making better walkways a reality. Stay tuned!

### AN ENLIGHTENING EXPERIENCE

The idea of vintage-style street lights has been in-the-works for some time. If all has gone well, an important change to the look of our town is now complete.

We want to acknowledge the efforts of Yosemite Chamber of Commerce, Cal Trans, PG&E with a special thanks to: Duke York and Kevin Burns from Tuolumne County, Jim Nagle and Supervisor John Gray - plus a huge Groveland hug to Jenn Edwards, our very own squeaky wheel.

### COMMUNITY SERVICE COLLABORATION

On October 30th about one-dozen Community Service organizations and thirty-five volunteers turned out to share their missions and project lists. Five attendees came forward to investigate how we can fulfill the promise of a common set of services that will benefit all of our Community Service organizations.

### COMMUNITY HEALTH CENTER

The project team continues to meet with a prospective consultant to explore the potential development of a locally managed Community Health Center. Join us in making this important service for our residents and visitors a reality.

### COMMUNITY COMMUNICATIONS

Can you help? We need team members who can manage content for our Facebook and Website presence as well as help build our database so we can keep our permanent and part-time residents up-to-date.

### DESTINATION GROVELAND – GEARS AND GROOVES

The Gears & Grooves team is developing an early spring triathlon that can fill hotels, restaurants and rental units with athletes from the Bay Area and the gold country. This will be followed by a fantastic musical event.

If you'd like to receive email updates on this and other going's on, please send your contact information to [gapcouncil@visitgrovelandca.com](mailto:gapcouncil@visitgrovelandca.com). We promise to protect your email address. To stay even more informed, "Like" us on Facebook - The Groveland Area Partnership. We look forward to meeting you personally at the next Town Hall Meeting. And Happy New Year!

## Actors & Singers Wanted for "Musical Melodrama"

BY BOB SWAN

Set your Inner Thespian free! Be melodramatic ON PURPOSE!

The Pine Cone Players are looking for actors and singers for a "musical melodrama" that we hope to present in late April. The full version has several parts for rowdy cowboys, damsels in distress, not-so-damsels, and the usual townfolk in a "Deadwood Dick" style show. In addition, there are several musical numbers. There are both singing and non-singing roles.

There is a core group of local people who have participated in recent Players presentations, but we would like to encourage

newcomers to join us. We will be rehearsing at the Groveland Community Hall on Monday afternoons (at least), starting in January. We will have our first organizational meeting / read-through / tryouts between 4 and 6 PM on January 5, 2015, and our second meeting between 4 and 6 PM on January 12. If you are interested, please try to come to at least one of these (you don't have to be there for the whole two hours). I'd like to set the cast assignments after the January 12 meeting.

For further information, please contact Bob Swan, at 962-6535.

## Hilltop Musical Kids

BY LOUISE TURNEY

By the time this is published, "The Hill Top Musical Kids", under the sponsorship of Our Lady of Mt. Carmel Catholic Church, will have presented their 5th musical and 3rd Christmas Musical at Groveland Evangelical Free Church here in Groveland. We hope you all saw them singing, dancing and telling the story of Jesus's birth while traveling through time with the colorful "Jinglicious Dream Lamp". We want to

thank all our sponsors and you wonderful people for your donations. You make these productions possible. No child pays to participate and no child is turned down. Kids from pre-school through 8th grade, come join us in the summer for our next production, "Life is Good". We can also use more adult help. For information call Louise Turney, 962-0609 or 484-9822, Mary Ann Kash, 962-0200 or Maggie Rogers, 962-0374.

## Groveland Kiwanis Club

BY SANDY SMITH

The Groveland Kiwanis wishes you a wonderful, happy, healthy 2015.

Twenty fifteen is already shaping up to be an adventure because this is Kiwanis 100th Birthday. The international presidents message states that this is to be a celebration of our members, because it is our members who have made 100 years possible. It is going to be an inclusive celebration. Very few tuxedos and evening gowns. More T shirts and blue jeans.

One of Kiwanis finest efforts is that of the ELIMINATE PROJECT. We have the opportunity to rid the world of a very, very cruel killer, maternal and neonatal tetanus. You can read more about this

effort by going to [Kiwanis.org](http://Kiwanis.org).

One of Kiwanis goals for their clubs is fun, fellowship, and service. You have that at the Groveland Kiwanis meetings each Tuesday, 4:30 at the Pizza Factory. Come on down and see how you can impact your community. Its going to be a great year!

The Christmas Craft Faire was successfully sponsored by the Groveland Kiwanis Club. Santa arrived at the firehouse and was a big hit with the kids and parents alike. A big thank you to the fire crew on Saturday for all their help with special engine tours and a great attitude as we took over the fire house. Hats off to each of you.

## Help GAINS!

BY BARBARA BROAD

Groveland Area Involved Neighbors is looking for support for 2015. GAINS is a community collaborative with Board members representing different sectors of the Groveland area communities. Each year individuals and groups become Sponsors by donating \$100.

This year GAINS sponsors the Coalition Against Substance Abuse, with 30 members of our community and the YES Partnership in Sonora. We applied unsuccessfully for a Federal Drug-free Communities grant. We were told that is not unusual for a coalition less than a year old. The kids up here need support and help on substance abuse and suicide issues and more good things to do. Off-the-hill activities for teens are in the works, working with Tioga High School and T-RAD (Tioga Rising Against Drugs), a student-led support group.

But, now it's the end of the year, and we need sponsors for 2015 for administrative costs. We are ramping up and really need your help. If you have supported the GAINS coalition in the past, we hope you will want to be involved this year. This is the only source of income for GAINS, so we are depending on you to renew your sponsorship or become a sponsor for the first time.

### GAINS projects in 2014 in addition to CASA have included

- Expanding the Groveland Mentor Project for Tioga seniors and helping with plans for life after high school and applications to colleges and trade schools, with some financial support
- Presenting the 2013 Community Service Award

- to David & Christina Wilkinson for their Rim T-shirt sales and donation to the Forest Service
- Printing and distributing the free 2014 GAINS Resource Directory
- Offering free computer classes at The Little House and Library Meeting Room
- Loaning laptops to Brainy Groveland and the Tenaya Photo Contest committee
- Providing funds for the Youth Center to use for enrichment activities
- Cosponsoring FOGL schools poetry contest and a literary event
- Acting as fiscal agent for the Groveland Skate Park Committee, the Groveland Dog Park Committee, and Brainy Groveland

GAINS depends on community group and individual sponsorships to pay insurance and business expenses. Project moneys come from foundation grants and special fundraisers. It takes a barrel of sponsors just to cover the insurance tab! GAINS needs your support to continue these collaborative programs.

If you are a community group, please take some meeting time to talk about GAINS and encourage your members to become individual sponsors or to make donations. We would be happy to come and speak to your group and hear your ideas about projects.

Mail your check to GAINS, P. O. Box 179, Groveland. If you have questions about GAINS, email them to [grovelandgains@gmail.com](mailto:grovelandgains@gmail.com) or contact Barbara Broad at 962.7730.

## SOUTHERN TUOLUMNE COUNTY HISTORICAL SOCIETY Museum Happenings

BY CARRIE CARTER

It's time again for the annual Tenaya Student Photography Contest. Bonnie and Warren Belisle and Judi Maguire have worked hard to advise and mentor the 11 participants this year in grades 5 through 8. The student's favorite photos are ready for your vote through the end of January. In February the winners will be announced at an awards ceremony at Tenaya School. So please come into the Museum and view their creative artistry and don't forget to vote.

Last month's archive photo showed two structures near a body of water. The body of water was the seasonal steam known as Big Creek. At the time of the photo c.1970, Big Creek was dammed and filling what is now Pine Mountain Lake. The two structures in the photo date from the late 1800s and were the ranch house and barn from the Ferretti Ranch.

In the late 1960s Boise Cascade planned an amenity-filled development in the Groveland area. The land for this development came from several historic ranches dating from the Gold Rush period. One of those ranches was the Edmund James Ranch which was sold to Salvador Ferretti in 1898. Ferretti called his new ranch beside Big Creek "Shadow Brook Farm".

Besides ranching, Sal Ferretti was also a county supervisor at the turn of the 20th century and it was for him that Ferretti Road was named. He had a butcher shop in Groveland and a slaughterhouse at his ranch, whose site is now under water, which supplied his meat market.

For a central part of their development, Boise Cascade purchased the 1,400 acre Ferretti Ranch from the then owner, Palo Alto doctor R.D. Dunn. The old ranch house was moved to higher ground, adjacent to the barn, and sold as a lakefront residence in the 1970s.

Over the years, the ranch house served as a



Pine Mountain Lake sales office and rental for large groups such as the Boy and Girl Scouts. It was extensively damaged by fire and rebuilt in the 1970s, retaining its historic charm and became the private residence of the current owner in 1979.

The Ferretti barn was renovated to become Lake Lodge with its large stone fireplace, open-beamed interior with swimming beach and boat dock.

Who would have guessed that so many wonderful events over the last forty years would have taken place in such a historic venue? Next time you are at the Lake Lodge be sure to look around at the preserved timber beams inside and the notable setting outside as you enjoy this extraordinary amenity.

*Don't forget to visit us on Facebook!*

### DO YOU RECOGNIZE THIS BUILDING?

If you can identify this month's historic photo from the STCHS archive you will receive 20% discount on any single item from the Groveland Yosemite Gateway Museum gift shop during the month of January (one gift per family).

## Southside Senior Services News

BY RON HARMS

### S.S.S. Elects New Directors

Southside Senior Services said farewell to two departing directors and elected two new Board members at its December meeting. After several years of service, Judy Gravino has "retired" from the Southside Board along with fellow Board member Pat Price. Judy has played a pivotal role in Southside's marketing and communications activities and most recently served as Secretary for the Board. Pat has been a cornerstone of our event planning and fundraising activities. We wish both Judy and Pat well as they pursue other interests and we thank them for their service to the community.

Taking the place of Judy and Pat are Bonnie Phillips and Nina Jobe. Bonnie is active in both CASA (formerly the YES Coalition) and Pine Cone Singers and has recently served on the Steering Committee for Village on the Hill. Nina is a long-time resident of Groveland who, along with her husband Larry, have been active organizers of travel adventures in China and the development of the Flying Tigers museum.

We welcome both Bonnie and Nina to the Board and look forward to their contributions to the programs and services offered through Southside Senior Services. Continuing their Director roles in 2015 are Jim Goodrich, Ron Harms, Anita Millard, Judy Myers, Carole Smith, Luci Tyndall, John Weisenburger, and Alex Wylie

### Village on the Hill to Launch Pilot Program February 15

Village on the Hill, a project of Southside Senior Services, will launch the pilot phase of the program on February 15 and will begin offering services to members on a limited basis beginning March 15th. If you are interested in participating as a member

during the pilot phase (restricted to 10 members) please contact Lisa Vaughn at Village on the Hill at [lisav@villageonthehill.org](mailto:lisav@villageonthehill.org) or leave a message at 962-7303 to discuss your interest and to obtain an application. The implementation of the full scope of Village services is expected to be available beginning May 1st.

Village on the Hill is a program designed to assist people in our community to age in place. Personal safety and enhanced personal satisfaction for members are important outcomes that the program is designed to achieve. The success of Village on the Hill will depend on the willingness of community members to volunteer to provide a range of services (home, personal, transportation) to members of the Village. Everyone has a talent that the Village program can use! Please contact Lisa Vaughn at [lisav@villageonthehill.org](mailto:lisav@villageonthehill.org) to learn more about Village on the Hill and to express your interest in volunteering for this new opportunity to be of service to your neighbors in the greater Groveland/Big Oak Flat area.

Calling for Volunteer Leaders! As the planning for Village on the Hill continues in early 2015, we are searching for a few talented women and men who are willing to serve as Volunteer Leaders for segments of the Village program. Specifically we need Volunteer Leaders to oversee the Handy Helpers (performing home safety checks, minor household repairs), Friendly Faces (companionship, caregiver relief, daily "good morning" calls) and Behind the Scenes (scheduling, processing applications, communications assistance) segments of Village on the Hill. Call Luci Tyndall or Lisa Vaughn (962-7303) to obtain more information about the role of Volunteer Leaders in these exciting new programs.

## Pat McGreevy on Project Cornerstone

A TUOLUMNE GROUP OF THE SIERRA CLUB PROGRAM • THURS. JAN. 15, 6:30-8:00PM

Pat McGreevy of Glencoe will speak at the San Andreas Library on the progress of the Amador Calaveras Consensus Group's Project Cornerstone. The ACCG is a coalition of 40+ agencies and individuals that works to create fire-safe communities, sustainable local economies and healthy forests and watersheds. Recreation is a strand that runs through this project and will be highlighted by Pat.

McGreevy is one of three recipients of the 2014 Senior Volunteer Of the Year award and has worked tirelessly on the organization and implementation of Prop. 40 funding to create parks, ball fields, signage, playground equipment, shade structures and other

amenities across the county. He has also created a website called [CalaverasOutside.org](http://CalaverasOutside.org) which catalogs hiking trails in Calaveras and Alpine Counties and which represents the result of countless hours of walking the land, plotting routes, photographing trails and historic sites, consulting with experts, creating maps and writing guides.

The program meeting will take place from 6:30 PM to 8 PM at San Andreas Library, located at 1299 Gold Hunter Rd., San Andreas 95249, 209-754-6512. See link below for map. Refreshments will be served. The program meeting is open to all community members. <http://co.calaveras.ca.us/cc/library/libraryhours.aspx>

## Adult Literacy Tutoring

BY HARRIET CODEGLIA

Free 1-on-1, confidential tutoring for adults to improve their reading, writing, math, or other skills. The hours & locations are flexible, designed to fit busy schedules of adult learners. Work at your own pace and on the skills needed to improve your life. This will be available in the Groveland-BOF area.

Contact the Groveland branch librarians if you are interested in becoming a tutor, or if you or someone you know could benefit from this outstanding service. Or email the president of the Friends of the Groveland Library (FOGL) Harriet Codeglia at [hcodeglia@gmail.com](mailto:hcodeglia@gmail.com).

## John R. Ziomek, DPM

*Podiatry practice now open in Groveland*



Practice limited to diseases  
of the foot and ankle.  
Diabetics welcome.  
Most private insurances accepted.  
Medicare assignment accepted.

Located at 20767 Ferretti Road  
Groveland, CA 95321  
209.962.6000

*By Appointment Only*



PRESENTS

# Saturday Winter Dinners

AT THE HOTEL CHARLOTTE

- SATURDAY, | 01.17 *Duet's Classic Fried Chicken*  
\$25
- SATURDAY | 01.31 *Pork Loin with Fig & Port Sauce*  
\$25
- SATURDAY, | 02.14 *(Valentine's Day 5 course dinner)*  
*Filet of Beef Tenderloin with Bordeaux Reduction and Seared Martini Scallops*  
\$50
- SATURDAY, | 02.28 *Breast of Chicken Filet & Vegetable Napoleon*  
\$25
- SATURDAY | 03.14 *Korean Beef with Mushrooms, Broccoli, and Spring Onions Plus Chicken Teriyaki*  
\$25
- SATURDAY | 03.28 *Provence Pork Tenderloin Medallions*  
\$25

**RESERVATIONS:**

Call DUET CATERING COMPANY @ (209) 962-7397  
*Please do not call the Hotel Charlotte for reservations*

## Northside Pet Connection News

BY TOM GRAVE, NPC VICE-PRESIDENT

NPC is looking forward to the start of the new year, optimistic that our now-established policy of 20 vouchers available each month, plus the increased value of the vouchers will expand our ability to offer spay/neuter services to the pets of more individuals and families. This means that, depending on which veterinary

clinic you choose, almost the entire cost of spaying or neutering your pet will be covered. Remember, the number to call to sign up for a voucher is 732-6194.

You undoubtedly know by living in the Northside communities served by NPC that pet overpopulation is a large problem. The response

## Oils: Not Just For Cooking

BY CLAUDIA DAY-FOSSUM

Do you have diabetes? High blood pressure? Do you suffer with chronic pain and inflammation?

I was listening to this radio ad and wondering "What are they trying to sell now...supplements? Some magical device? A silver bullet cure-all?" But turns out they were selling supplemental life insurance!

So let me get this straight...we've given up on trying keeping our bodies healthy and just spend our money on life insurance so those left behind have money? That's absurd! Never, **ever** give up!

If you aren't finding relief from the healing method you're using now, or the side effects (e.g. headaches, rash, difficulty breathing, anal leakage, death) are unacceptable, whether it be pharmaceuticals, or alternative methods like chiropractic, acupuncture, massage therapy, or other, why not add another tool to the toolbox? With no claims of diagnosis or cure, I would like to share another perfectly sensible alternative. I am excited to show the benefits found in using pure essential oils and helping health-conscious individuals find safe alternatives while ridding our lives of toxic chemicals. Essential oils when used properly (barring unusual allergic reactions) do not come with the negatives of most pharmaceuticals. And the aromas are exceptional!

More than a third of Americans already use some form of complementary or alternative medicine, according to the National Institute of Health, and most are not covered by insurance. If you suffer from chronic pain or ailments though, you might consider this money well spent. But before you spend money on nontraditional healing **do your homework**. Make sure what you use is pure and has been stringently tested for pureness and quality.

When you choose dōTERRA® pure essential oils, you are choosing oils gently and carefully distilled from plants patiently harvested at the precise time by skilled growers across the globe for ideal extract structure and efficiency. Each oil is thoroughly tested using the strict Certified Pure Therapeutic Grade® (CPTG) quality protocol. Knowledgeable essential oil users immediately recognize the superior quality standard for naturally safe, effective therapeutic-grade oils.

CPTG essential oils represent the safest and most beneficial oils available in the world today. (from [www.doTERRA.com](http://www.doTERRA.com)) For an oil to be CPTG the oil must be:

- Pure and natural, with aromatic compounds carefully extracted from plants
- Free from fillers or artificial ingredients; no dilution of active qualities
- Free of contaminants, pesticides, or chemical residues
- Rigorously tested for standards of chemical

composition

- Cross tested using mass spectrometry and gas chromatography to ensure exact purity and composition potency

Sourced by a global network of leading essential oil chemists and growers to ensure correct species, growth in ideal environments, and that raw plant materials were carefully harvested at the right time

Maintaining the high standard of quality set by dōTERRA® for purity, potency, and consistency of essential oils involves a proven process that yields industry leading quality. Using local artisans to source the raw materials for essential oils has the added benefit of creating industry for that particular community. In many cases, the harvesting of essential oil source plants has created jobs and opportunity where previously there was none, offering hope to millions around the world.

**Philanthropic Efforts**

In addition to the superior quality and benefits of these oils what impresses me more is that dōTERRA® partners with organizations that pursue healing and hope, for lives free of disease and poverty, and empowering impoverished communities with tools necessary to become self-reliant. The **dōTERRA® Healing Hands Foundation** is a registered 501(c)(3) non-profit organization committed to improving lives.

For all these reasons and more, I have chosen to become a Wellness Advocate for dōTERRA® and I would like to help you **regain** and **maintain** your health and vitality.

Take Control of Your Health

dōTERRA

Pure Essential Oils are a powerful tool:

- increase energy
- weight loss & management
- boost immune system
- first aid and pain relief
- beauty & cleaning products
- repel insects
- release stress, tension & anxiety
- reduce symptoms of numerous diseases

Learn & educate yourself on tools that can change your life.  
Ask questions - absorb knowledge!  
Alternative Health & Beauty Classes Offered

**Claudia Day-Fossum**  
209-962-7196  
cday77@outlook.com  
[www.mydoTERRA.com/Claudiaheals](http://www.mydoTERRA.com/Claudiaheals)

needs to be shared by all of the residents of the region whether or not they personally own pets. We have been pleased with the way our message has spread, but much more needs to be done. In particular, we have to increase our efforts at educating the public, especially concerning spay/neuter alternatives that are available.

One small way for citizens to help NPC

is to place spare change in the containers at various merchants in the area. Although Mar-Val market is no longer participating in this effort, we would like to thank them for their help in the past. Current participants include Greeley Hill Market, Claimjumper Outpost, and PMC Hardware and Lumber. Our thanks go out to them!

WWW.PINEMOUNTAINLAKE.COM

# ASTRO

HEATING & AIR CONDITIONING, Inc.

FAMILY OWNED & OPERATED SINCE 1985

**NO  
OVERTIME  
FOR  
WEEKEND  
CALLS!**

## YOUR HEATING & COOLING EXPERT

- SALES • SERVICE • INSTALLATIONS
- PINE MOUNTAIN LAKE RESIDENT

Heaters & Air Conditioners –  
ALL Makes & Models

We pride ourselves on  
PROMPT & RELIABLE service

Questions about your system?

Send me an email:  
brad@astroheating.com



Heating & Cooling Systems

Call Brad at  
**209.962.0202**

[www.AstroHeating.com](http://www.AstroHeating.com)

Licensed, Bonded & Insured  
lic. #522881



## HOUSE PAINTING

# FREE Window Wash

with every Exterior Signed Contract

VALID THRU FEBRUARY 2015

- Full-service House Painting
- Interior/Exterior Painting & Staining
- Drywall & Drywall Repair

RESIDENTIAL • COMMERCIAL

# 209.962.4445

[www.GreenTreePropertyServices.com](http://www.GreenTreePropertyServices.com)

LICENSED | BONDED | INSURED | CSL960719



## The Cellar Door Restaurant at The Groveland Hotel

January 10

presents

January 17

### ELVIS TURNS 80



with Rob Ely

### WINTER MAGIC



with Marshall Magoon

Dinner from 5:30 • Show Starts at 8:00

# Reserve your spot Today!



**209-962-4000 ★ Groveland.com**





# LOCALLY OWNED SINCE 1950

Your one-stop shop for all your pest control services.

- Pest Control
- Termite Control
- Weed Control
- Deck Repair/Replacement {License # 922758}
- And more...

Our reputation is important to us and your community.  
Call **(209) 532-3464** now for a free estimate!



To speak directly with our representative, please contact:

Seth Kuhn  
skuhn@clarkpest.com  
(209) 770-7733



<http://www.clarkpest.com>

## NEED HOMEOWNER'S INSURANCE?



Have you been cancelled, non-renewed, or denied Homeowners Insurance based on your home being in a brush zone?

Have you been forced to accept cut-rate or sub-standard coverage due to living in a forested area?

### WE MAY HAVE YOUR ANSWER!

We have a policy focused on fulfilling these needs. We are able to place moderate to high risks with an 'A' rated carrier while offering great coverage at an affordable rate.



**Eason Insurance Agency, Inc.**

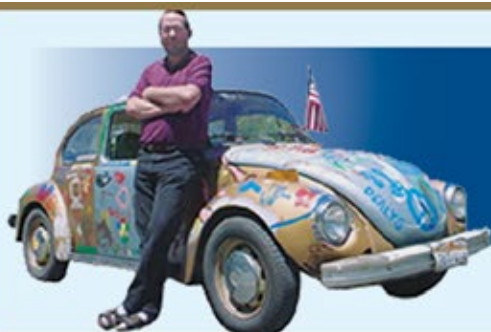
**209.383.7322**

9AM – 5PM Mon – Fri • 9AM – 1PM Sat

email: [homeins@easoninsuranceagency.com](mailto:homeins@easoninsuranceagency.com)

CA Lic #0C97581

[WWW.PINEMOUNTAINLAKE.COM](http://WWW.PINEMOUNTAINLAKE.COM)



**Fast Internet**  
from \$30 a month  
**MACs and PCs repaired**  
**\$55 an hour**

Since 1988  
**Throckmorton**  
enterprises

Winter Hours: Mon-Fri 8am to 4pm  
Saturday 10am to 2pm

18800 Main St. (Highway 120) • Groveland CA 95321 • 209-962-7308

[Throck.com](http://Throck.com)

Between carwash and fire station.

## January 2015

BY ETTY GARBER, PHD, LICENSED MARRIAGE AND FAMILY THERAPIST

Where has the time gone? Another year has passed and we begin again in 2015. This may have many different meanings, such as: I'm getting another year older or I have another opportunity to improve my life. It all depends on how you look at it. So, let's look at it. Can you look back and answer the following 5 questions (honestly)? 1. Was it one of the ten best years of my life, so far? 2. What was good about it? 3. What fell short? 4. What should I keep, what should I discard? 5. How can I do that?

The next 5 questions may help you to answer the first 5 questions. 1. Did I take care of my health? 2. Did I eat healthy foods and watch my weight? 3. Was I physically and socially active? 4. When life was hard did I remain calm and decide on a positive response of action? 5. Do I look at life with a positive attitude and a focus on the joys of living?

We all know that there are many rocks in the road. We have the options of going around them, over them or breaking through them; or do we let them stop us? We don't go forward if we let them stop us. Your decisions are based on many factors: 1. How much do I believe in myself? 2. Do I need help and support to handle situations? 3. Can I choose the option that I believe will bring the best results possible? 4. Will I be able to live with the choices I make for the results produced,


whatever they are? 5. Will I allow myself to go forward without regret?

Life is certainly very complicated and we often find ourselves faced with a great deal of stress. As I have mentioned previously, the complications of stress can be the cause of many health problems: Illness of a family member or yourself, passing of a loved one, job loss, financial concerns, and more. Stresses like these are particularly true as we age.

At this time of year our immune system can be compromised by stress and we are exposed to the common cold, flu and other viruses. Studies have shown that the longer the stress goes on, the longer the immune response is disrupted. Wounds take longer to heal, we may have sleep dysfunction, depression, anxiety, ulcers, stomach problems or back, joint, neck and shoulder pains are often felt.

So, what do we do to prevent all these miserable and painful things from happening to us? First, we take a good, honest look at our lives and identify the stress. Second, we learn to manage our stress by keeping our bodies nourished with healthy food, get enough restful sleep, exercise-minds and bodies, and maintain a positive attitude. If you need support, don't be afraid to get professional help. We all need a hand up sometimes.

Wishing you and yours a very HEALTHY AND HAPPY NEW YEAR.



**Dr. Etty Garber Ph.D.**  
in Clinical Psychology and a licensed Marriage Family & Child Therapist, with 32 years experience in mental health, lives in Groveland and

**OFFERS PRIVATE PRACTICE SERVICE**

Dr. Garber can provide psychotherapy in a variety of settings to individuals, couples, families and groups.

**RELATIONSHIPS • FAMILY CONFLICT • CHEMICAL DEPENDENCY  
DEPRESSION • ANXIETY • ABUSE, etc.**

PHOTO BY BECKY SNIFFEN

**Low Fees • No Insurance FOR AN APPOINTMENT CALL 209/962-5205**

**PRECISION OPTICS**  
Stacy Hancock, Certified & Licensed Optician

Prescription & Non-prescription Eyewear

FREE Adjustments & Repairs

Pricing 40% – 60% less than your Doctor's Office

Insurance Welcome

(209) 962-1972

18729 HWY 120, UNIT A, GROVELAND, CA 95321

**Sunglass Sale**  
Over 100 pairs of Designer Sunglasses  
30% – 80% OFF

"Like" Precision Optics on Facebook & receive \$10 OFF any Sunglass purchase

## Healthy Habits FROM PINE MOUNTAIN THERAPY

BY JULIE TANAKA, PT

Our kids joke that my husbands favorite piece of advice as they head out for the day is, "make good choices". We can apply that bit of advice to every aspect of our lives, including developing Healthy Habits.



Research shows over and over again that diets don't work, new years resolutions don't last, and that over ambitious goals are abandoned. Like the Tortoise and the Hare, "slow and steady wins the race". Making life style changes a little at a time, letting each choice become a habit results in long term benefits with surprisingly little effort.

Here are some ideas you may have heard before that are worth repeating:

### SNEAKING MORE EXERCISE INTO YOUR DAY

**Stairs** versus elevator: stairs burn twice as many calories as walking. Taking the elevator is often faster than waiting for the elevator.

**Parking** a bit farther away: I can't help finding the irony when people would complain about having to park a block away when the gym parking lot was full. Um, aren't you at the gym to get some exercise? Besides it will keep your car from getting dinged since there are fewer cars farther from the front doors of where you are going.

**Walking**, biking, swimming: find something you can do for 30 minutes each day. It will boost your metabolism, improve your mood, improve your circulation. Break it into 10 minute intervals. You can do anything for 10 minutes.

### MAKING BETTER FOOD CHOICES

Food is our fuel. What we put in our mouths determines how our bodies feel, operate, fight off disease, and age. Here's a clever mnemonic to pin up on your refrigerator:

#### Eat less CRAP:

- C- carbonated drinks
- R- refined sugars
- A- artificial sweeteners
- P- processed foods

#### Eat more FOOD:

- F- fruit & veggies
- O- organic lean protein
- O- omega 3 fatty acids
- D- drink water

As with exercise, choose something to work on each week until it becomes a habit. Like choosing grilled lean meat instead of anything fried! Drink water instead of soda. Satisfy your sweet tooth with angel food cake or ginger snaps instead of calorie dense donuts or sweet rolls. Limiting your options at home will help you make healthier choices.

And you don't have to give up eating out! There are many small choices you can

make to improve the health of your meal and lower the calorie count. For example, at our great little Mexican restaurant in town: choose soft corn tortillas instead of crispy, avoid those chips, ask for salad instead of rice and

beans (their salsa makes a great dressing), say no to sour cream. You've just cut the calories and fat in half and still have a great meal.

I am not saying to deprive yourself. That won't last and you'll be miserable. I'm asking you to think before you choose. Choose to be healthier, choose to have more energy. Each healthy habit you make will be a step forward. They may seem like "baby steps" at first but they really add up. So, before you head out the door for your walk, "make good choices".

"We are our choices." – Jean-Paul Sartre

Best wishes for a healthy and happy new year from everyone at Pine Mountain Therapy!

**PINE MOUNTAIN THERAPY**

Outpatient Physical Therapy

Serving the Mountain Communities of Tuolumne and Mariposa Counties

18800 Main Street,  
Groveland, CA 95321

**209-962-4035**

Please visit our new web site at [www.pinemountaintherapy.com](http://www.pinemountaintherapy.com)

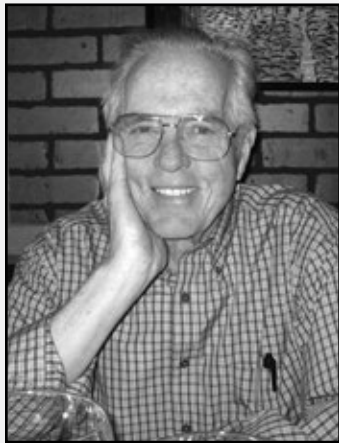
A Preferred Therapy Provider, participating provider with most insurance carriers including Medicare.

# OBITUARIES

## Galen Marshall

DECEMBER 4, 2014

Galen Marshall, founder and Music Director Emeritus of Masterworks Chorale in San Mateo, CA, passed away on Dec. 4, 2014, after a rapid decline of health related to Alzheimer's. We have lost a legendary man who shared his musical talents and artistic vision with countless singers and instrumentalists in the Bay Area for over 50 years.



influential relationship with his idol, the legendary Robert Shaw, that began in 1980. He also knew real talent when he hired young singers for his concerts. Well-known opera singers who first sang with Galen include Patricia Racette, Sondra Radvanovsky, Deborah Voigt, John Relyea, Ruth Ann Swenson, Stuart Skelton and Luana DeVol.

Born in Greensburg, Kansas, Galen's family relocated when he was a child to the Central Valley in California, where he attended Modesto High School. Galen completed his BA and MA in Music at San Francisco State University. While teaching at San Francisco City College in the early 1960's, he attended Stanford University with the intent of obtaining his doctoral degree in choral conducting. However, he had the unique opportunity to take a fulltime teaching job at the newly relocated College of San Mateo. In addition to his successful college choirs, Galen decided in 1964 to offer an evening course for adult singers who were interested in performing the great choral masterpieces – thus the birth of Masterworks Chorale, his greatest artistic accomplishment. Two other important births of note were that of his two sons, Brian and Dennis. Galen had the great fortune to become a member of the Bracebridge Dinner singers in that era, where he fell in love with Yosemite's beauty; for his boys, Christmastime WAS Yosemite. Years later, Galen would buy a home in Pine Mountain Lake and reacquaint himself with the area.

In 1973, Galen and his San Jose State University colleague, Charlene Archibeque, took their college choirs on a European tour, where they took the grand prize in an International Choral Festival. Galen then began organizing a series of tours with Masterworks Chorale – Europe in 1975; again in 1977 with professional Bay Area instrumentalists and soloists, 1981 to Italy, Yugoslavia and Greece; China in 1985; 1991 tour to Spain for performances with Bay Area soloists and professional orchestra from Budapest; 1994 to Eastern Europe with a Czech orchestra, and soloists including then-unknown Van Cliburn winner Jon Nakamatsu.

The highlights of his long career include a Carnegie Hall performance of the Verdi Requiem in 1989, and perhaps the most

Outside of music, Galen enjoyed playing golf, bridge, traveling, and fine wines. While married to 2nd wife, Ellen, he was gently coerced into a golf match outside of Paris with her relative's friend, a certain Edouard Balladur, who later became Prime Minister of France. Needless to say, l'Américain Galen Marshall buried the Frenchman with his golf game! An avid sports fan, he and his wife, Linelle, held season tickets to the SF 49ers for 20 years, and Galen followed professional golf, basketball and baseball activity. If the 9ers were playing on a performance day, singers and orchestra were admonished to NOT tell him the score, as the game was being recorded for enjoyment after the concert! He was a fierce pool shark, teaching many friends how to lose graciously! Still single-skiing into his 70's, Galen enjoyed teaching friends and their children how to water-ski near his home in Groveland. The red ski boat was sold in order to buy a 32' class A motorhome in 2004, and Galen took off on RV trips with Linelle, their sheltie and cats. There have been countless dinner parties and celebrations hosted by the Marshalls over the years, featuring Linelle's culinary skills and Galen's artistry in setting the perfect table, keeping wine flowing and regaling guests with many stories.

Galen's uncanny ability to see into people's hearts made him a father figure, mentor and counselor to friends, family and students. His charming and witty demeanor, fundamental optimism about life and desire to help others be all they could be are qualities that made him a magnetic figure that everyone wanted to be near.

There will be an informal memorial gathering on Saturday, January 17, 2015, 2:00 PM, at the PML Lake Lodge. Contributions in memoriam can be made to Masterworks Chorale of San Mateo, the Humane Society, The Yosemite Conservancy or any charity of your choice.

# BIG NEWS

from **The Little House**  
A Community Gathering Place

The third annual Light the Season event capped off the year for The Little House with the lighting of the memorial tree, singing of holiday carols and remembrance of those who have been important in the lives of community members. Chili, cider and holiday treats were enjoyed by over 80 supporters who attended the festivities. Our sincere thanks to the Light the Season Committee of Ann Daws, Judy Gravino, Cheryl Harms, Carole Smith, Luci Tyndall and Isobel Wylie for their generous commitment of time, energy and culinary skills that made for a memorable evening. Thanks also goes to the many members of the Pine Cone Singers who attended and who contributed their vocal talents as we lifted our voices in celebration of the holidays. David Volponi (tree lighting), Dave

Montgomery, Alex Wylie and Ron Smith (traffic control/parking), and Linda and Allen Craig (candles) also contributed to the enjoyment of the evening. We hope the illumination from the corner of Merrell Road and Highway 120 made you smile as you entered our community during the month of December.

WHEELS\*, a transportation program for seniors sponsored by Southside Senior Services, brought seasonal cheer to area residents when WHEELS\* drivers delivered Christmas dinners to nineteen (19) clients of the WHEELS\* program. The local meal delivery by WHEELS\* volunteers was done in conjunction with Tuolumne County's Community Christmas Eve Day Dinner program that provided more than 300 Christmas meals to people in the greater Groveland area and hundreds more in Sonora! A huge "thank you" to WHEELS\* drivers Shirley Brasesco, Doug Hammond, Judy and Ron Michaelis, Joyce Reitzen and John Weisenburger and to WHEELS\* volunteers Dave Montgomery, Luci Tyndall and Alex Wylie for their commitment to spreading good cheer during the holidays.



**PAUL S. BUNT, ESQ.**  
ATTORNEY AT LAW

ESTATE PLANNING  
PROBATE  
REAL ESTATE  
BANKRUPTCY  
ELDER CARE  
209.962.6778

Mountain Leisure Center, Groveland  
appointments available in Sonora and Lake Don Pedro

**Winter Hours:**  
Sun-Thurs:  
11:00AM - 8:00PM  
Fri-Sat:  
11:00AM - 9:00PM

"WE TAKE LOCAL  
COMPETITOR'S COUPONS!"

## PIZZA PIES

NOW SERVING PASTA DINNERS  
TRY OUR ALL YOU CAN EAT LUNCH SPECIAL OR OVEN BAKED SUBS

Call ahead: 962-4897 (962-GUYS)  
18955 Ferretti Road. Left turn off of Main St (Hwy 120) 1/2 Block

\$1.00

Off Any Size Two Guys  
Pizza or Calzone

One coupon per order, per visit. May not be combined with any other offer and/or coupon. Not valid on delivery.

PML0115 Expires 02/15/15

\$2.00

Off Any Large or Extra  
Large Two Guys Pizza

One coupon per order, per visit. May not be combined with any other offer and/or coupon. Not valid on delivery.

PML0115 Expires 02/15/15

Is Your Computer Sick?  
Call Mark at 209-962-5629  
I Make House Calls!



- Computer Repair/Upgrades/Diagnostics
- Wireless/Internet/Network Setup
- Audio/Visual Restoration/Transfer to CD/DVD
- Don't Delay & Lose Precious Photos & Memories
- Data Recovery - If Recovery is Possible
- I Build Custom Gaming & Business Machines

Hourly Rate Applies - Call for Details

## RELIGIOUS SERVICES

### Big Oak Flat Baptist Church

Wards Ferry Rd., 3 blocks from Hwy. 120,  
Pastor: Jim Lowe • Sunday School 9:45 am,  
Worship 11 AM & 6 pm

### Buck Meadows Community Church

Old Hwy. 120 & Buck Meadows 209/962-5789  
Pastor: Josephine Ellis  
Sunday School & Worship 10 am  
Food Pantry Open each Sun before & after service  
Potluck 3rd Sunday after service

### Groveland Christian Church (Non-Denominational)

18829 Foote St., Groveland, 209/962-7654  
Pastor / Elder: Jack Woodland, Dennis Smith  
Sunday Worship 11:00 AM; Bible Study 9:30 AM;  
AA Tuesday & Thursday 7 PM • Ladies Bible Study  
Monday 4:00 PM • Wednesday Night Bible Study 7  
PM Call 962-4950 for directions

### Church of Jesus Christ of Latter Day Saints

19870 Hwy. 120, Groveland 209/962-5345  
Branch President: Vern Shumway, 209/962-6955  
Sun. Sacramento 10 am, Sun. School 11:15 am  
Sun. Prsthd Mtg. & Women's Relief Soc. Noon

### Evangelical Free Church of Groveland

19172 Ferretti Rd., 209/962-7131  
Senior Pastor: Ron Cratty • Services: Traditional  
9:30 am, Contemporary 11 am  
Mid-week Bible Studies  
(please call for information)

### Foothills Community Church

18717 Main St., Groveland  
Sunday Worship 10:45 am; Christian Ed. Hour  
(groups for all ages) 9:45 am, Child care provided  
at all services. Weekly Home Bible Study,  
call for times

### Grace Episcopal Mission

At Mt. Carmel Catholic Church,  
Hwy. 120, Big Oak Flat  
Fr. Jim Stout 209/962-1899 or 209/768-0450  
Services 2nd & 4th Sundays 4 pm

### Groveland Seventh-Day Adventist

19585 Elder Lane, Groveland  
Pastor: David Bello • Sabbath School 9:20 am;  
Worship 10:50 am • Wed. Prayer Meeting 6:30 pm

### Jewish Services

Call 209/962-5995 for more information  
Friday 7 pm followed by Kiddush  
Saturday 10 am followed by Kiddush & Kibbitz

### Mountain Lutheran Church

13000 Down to Earth Court (off Ferretti)  
Pastor: Ginger DuMars  
209/962-4064 • Sunday Service 10:00 am,  
Bible Study 1st and 3rd Thurs at 1 pm  
[MountainLutheranChurch.com](http://MountainLutheranChurch.com)

### Northside Church of Christ

18584 Main Street, Groveland  
209/878-0263  
Located behind Yosemite Bank  
Sunday Bible Study 10 AM  
Sunday Worship 11 AM  
Wednesday Bible Study 7 PM

### Our Lady of Mount Carmel Catholic Church

Hwy. 120, Big Oak Flat, 209/532-7139  
OLMC Parish Services - 209/962-1030  
Pastor: Fr. Ray Abella  
Mass Saturday 4:45 pm, Sunday 9:15 am

### Unitarian Universalist Fellowship

Groveland Community Hall  
Contact Kathleen 209/840-4777  
Service 5th Sunday, 10:30 am,  
at the Groveland Library

## We Want Your Corks!

BY CLAUDIA DAY-FOSSUM

Are you throwing out your corks? Did you ever wonder if you can recycle wine corks? The answer is YES! There are many products produced from wine corks from building products to footwear to flooring. Your corks will be used to replace petroleum-based materials in consumer products and extend the useful life of your wine corks. You will be giving new life to perfectly good natural cork. Recycling corks will also help promote recycling and sustainable best-practices in your community. And I will make it super easy to do so!

There are 13 billion natural cork wine closures sold into the world market each year - yes, 13 billion! At present, the majority of them end up in landfills instead of in reuse applications. While natural cork will degrade over time, landfill capacities in most communities are at a critical state.

Natural cork is still the easiest and best

material to recycle. It takes less CO2 to manufacture, less CO2 to recycle, and a whole lot less energy to produce. Cork is ideal for recycling. It is biodegradable, renewable, energy efficient, sustainable and 100% natural.

By recycling a simple cork stopper we can visualize the product source, its evolution into a useful natural product, and its potential for an extended life far beyond its first use in a bottle of fine wine.

Save your corks (natural only - not plastic) and I can either pick them up or will provide a convenient location to drop them off. I am willing to be the "collection site" for our area and will take care of shipping them off to America ReCork. (They provide a free shipping label.) If you have any questions, want further information, or have corks to recycle please feel free to email me at [cday77@outlook.com](mailto:cday77@outlook.com) or call me Claudia Day at (209) 962-7196.

## The Yosemite Hwy 120 Chamber of Commerce

BY TOMAS HERNANDEZ, JR. - PRESIDENT

The Yosemite Hwy 120 Chamber of Commerce extends its gratitude to all the volunteers who helped make 2014 a success for our Highway 120 community. Throughout the year, your contribution of time has ensured we were able to support various events such as Santa Comes to Town and the town decorations, Halloween, '49er Festival and Chili Cook-off, Big Bucks BBQ, summer's flea market, and Fill the Bus. Volunteers also play a large part in staffing the chamber office and

visitor center, and we thank each and every one of you, regardless of where or when you pitched in to help.

The challenge of finding volunteers will continue in 2015. To those of you who contributed your time in 2014—we hope to see you again and we truly appreciate your time. We encourage you to bring a new volunteer with you this coming year. By being a volunteer, they will see the benefits and feel the joy in helping to build a stronger community and chamber.

## STCHS / Tenaya Elementary School Annual Photo Contest USED DIGITAL CAMERA DONATION REQUEST

BY BONNIE BELISLE

We are graciously accepting your donation of Digital Cameras that you may no longer be using - for use in our future annual Photo Contests at Tenaya Elementary for 5th - 8th grade students.

Thanks to some of you who back through the years have donated. Some of the current cameras have now outlived their use. As you have seen over the years some fabulous photos have been taken and enjoyed by all of our Museum visitors.

Please be sure to stop by the Museum to vote for 1st, 2nd and 3rd place photos. Voting will continue through the end of January.

Our Awards Ceremony will be scheduled

sometime in February, with the exact date and time yet to be determined. Stay tuned! First, second and third place winners will be determined by the votes cast at the Museum. Cash and other prizes will be awarded. All photographers will receive a Certificate of Participation, an 8x10 of their photos, and a photo key ring which will include a copy of their photo.

You may drop your donated camera off at the Museum and fill out a "STCHS Donation Form." Call Bonnie Belisle 962-4309 for info or email: [mtnbonnie@hotmail.com](mailto:mtnbonnie@hotmail.com).

Thanks for your help with this project!

# PML Spirit: Jane Hansen

BY JANET GREGORY

Live with intention. "If not now, when?" asks Jane Hansen when presented with an idea that interests her. Artist, friend, and traveler Jane does things because she wants to. She is always looking forward and counsels others not to look back too much. What is past is past.

Listen hard and don't make the same mistakes twice. A strong mentor at Jane's first professional job set a strong foundation, teaching her to listen and learn. She moved up quickly, took on more responsibility and within three years was managing people and helping run multiple offices.

Practice wellness, eat right and remain active. Jane loves to dance and play golf, although she no longer skis, ice skates, rides horses or hikes. Running rivers was something she and Vern did. Spending 2-3 weeks on the rapids of the Colorado River, camping and fishing; the Grand Canyon is a magical place.

Play with abandon. Travel is Jane's playground. There's nothing better than sitting quietly with a glass of wine, watching the flow of life in another country. Even taking in a show, not caring that she doesn't understand the language because the arts are universal. She enjoys traveling alone or with others. Jane prides herself on strategically packing a single small suitcase with the right fabrics, style and comfort. Active travel is more interesting to Jane than just being a tourist. She's been on an African safari, walked the Great Wall in China, skied and skated Innsbruck, Austria and Lillehammer, Norway while attending the Olympic Games. She prefers warmer climates now.

Laughter and a wonderful contagious smile fill the room when Jane arrives at a party. Her timing when telling a joke will explode a group into laughter. Some jokes may be a bit off-color but they sure are funny! Jane has an uncompromising positive attitude, "make up your mind to be happy and know what you want". She doesn't want stress and enjoys the privilege of growing older. If she takes something on that is stressful, she will artfully wrap it up and move on "it has to be on my terms".

Choose with no regrets. Don't look back too much. Do your best, then move on. Welcome change; even things that seem stupid at first usually end up okay. Jane says that she is not particularly good with money. She's not bad with money either. She has always had enough. Her goal is to NOT spend all she gets. There were really tough times before and during World War II. War time is a different world. There are things that can't be understood from reading a book if you haven't lived through them; it changes your perspective.

Jane appreciates her many friends, treasuring the relationships and bonds. Friends are important. Having a lover is important. Everyone needs someone that cares what happens to you. You can even be married to your lover. Friends filled the gap after Vern passed



away; today many special men and women of PML care about her. Jane loves the quiet style of Pine Mountain Lake. It's been almost 20-years and she is very happy here.

Continue to learn throughout life. Jane grew up in Southern California during the golden age of cinema which contributed to Jane's style and poise. She was a good student in high school and college but precocious, "thinking I knew so much". She has learned a lot about living and the arts throughout life. Today Jane still sees herself as precocious and loves to learn.

Do what you love. The arts weave a pattern throughout Jane's life. The color and texture vary widely throughout the years yet intertwine into an interesting tapestry of light, dark, clarity and mystery. Jane has dabbled in most art forms and mastered many including painting, wood carving, pottery, sewing and weaving. Jane took up weaving after retirement, developing the skill of a master weaver. Weaving is a passion. Jane has created wall hangings on-commission, not so much for the money but to pay for her hobby. Jane has to like the person she creates a piece for; there needs to be a connection for the design to emerge from yarn, thread, warp and weave. Look for her woven art adding warmth and texture to homes and businesses throughout Groveland.

Live as if this is all there is. At 95 thinking about what's next, the eyes of this wonderful PML Spirit, Jane Hansen, sparkle "I will be 100 in spite of myself". There is more to Jane's story as her life parallels her favorite quote, but this is all that she (and I) will tell.

- Walk on the edge.
- Listen hard.
- Practice wellness.
- Play with abandon.
- Laugh.
- Choose with no regrets.
- Appreciate your friends.
- Continue to learn.
- Do what you love.
- Live as if this is all there is.

Whose story is next? Contact [janet.gregory@sbglobal.net](mailto:janet.gregory@sbglobal.net) or 962-5061.

# The Soroptimist Scene

BY BARBARA ELLIOTT

*Our mission: "Soroptimist improves the lives of women and girls through programs leading to social and economic empowerment"*

## Welcome 2015

2014 is gone, gone, gone.

Hope all your 2014 wishes and goals for health, joy and success were met. Several of our members had health issues last year – our joy is the fact that our members are recovering or recovered! That is a grand way to start 2015.

Not too much to report for the year-end . . . but we did present Encore and More! – a fundraiser to kick start the next service projects. The evening group members started setup around 7:30 AM, then hurried off to their jobs. One of the unexpected pleasures -- past members (SIG alumni) showed up to help setup, donate items and generally provide assistance. That was so cool! The function was well attended and we had a great time. The kitchen crew got rave reviews. I know my soup selection was very tasty. There were lots of bargains that were snapped up. Any remaining items were carried to Helping Hands -- they were very happy to receive the items.

Members were next off to ready themselves for the Christmas holiday.

With the start of the new year, there will be flurries of activity getting ready for the Wellness Faire. SAVE THE DATE: MARCH 31, 2015. There will be more information available next month.

Start the New Year with a resolution to investigate the Soroptimist of Groveland.

You can get involved with the Wellness Faire and scholarship selections.

Our evening session is held on the first Wednesday of the month at 5:00PM at the Library lower level. The daytime group continues to meet on the 3rd Tuesday, at noon in the Library lower level. Members are invited to meet with both meetings. We would encourage you to call Liz Mattingly at 962-7648. We want you to become an active member of this community.

**FREE ESTIMATES**  **FREE ESTIMATES**

**NEWARK FENCE, INC.**

**NEW DECK REPLACEMENT • REPAIRS**  
**RAILING • STAIRS**  
**CON-HEART REDWOOD • COMPOSITE**  
**HARDWOODS**

**GIVE US A CALL 510-797-1299**



**19 DAYS MAR. 18 – APR. 5, 2015 ALL 5-STAR**

**11<sup>th</sup> Annual Escorted**

**American Aviators VIP Tour to China**

*Possibly our LAST China tour – already filling fast!*

Led once again by local retired UAL Captain  
 Larry Jobe & wife "China Nina"

**Shanghai, Suzhou, Wuhan, Yichang, Yangtze River Cruise thru Three Gorges & the 5 locks of the World's Largest Dam, Shennong Stream, Fengdu, Chongqing, Chengdu (Baby Pandas), Guilin, Yangshuo, Xi'an, & Beijing.**

Be part of a **SPECIAL Delegation** attending the **GRAND OPENING** ceremonies of the huge new **FLYING TIGERS MUSEUM** at their old airfield. \*\*\* FULL details: [www.TravelAireTours.com](http://www.TravelAireTours.com) \*\*\*

**\$3448\*** pp (\*DBL Occupancy) – Local **962-5588**

\* [plus airline fees/taxes, visa, insur. & tips] Toll-free (866) 669-2288

CST 2070111-40

## STUDENTS OF THE MONTH

### Tioga High School Student of the Month



Bryan Larrea

Tioga High's student of the month for January is Senior Bryan Larrea. Karen Seals, long term substitute Teacher, has nominated Bryan this month. She says "Bryan is a fine young man who really displays

great leadership skills. He is involved in extra-curricular activities here at Tioga and is currently playing Varsity Basketball, while maintaining a high GPA. Bryan is intelligent, confident yet humble. He also has a wonderful sense of humor, which puts a smile on everyone's face he is around." Bryans very proud parents are Cecilia Larrea and Dan Peters of Groveland.

### Tenaya Elementary Student of the Month



Otto Ennis

Tenaya Elementary is proud to have Otto Ennis as our Student of the Month. Mr. Egger says, "Otto is a terrific student. He is always willing to help others and gives his best effort

in all he does. He shows initiative by finding out what needs to be done and then completing the task. Otto treats others with kindness and respect. His positive attitude is appreciated by staff and students." Otto's parents are Johanna Richter of Groveland and Rich Ennis of Soulsbyville.

## Tenaya Elementary Honor Roll

#### 4th Grade

**3.5-3.99** Otto Ennis, Aubrey Harris, Cheyenne DeCarli, Mary Jane Hersom, Eric Petro, Shayla Bertram, Anaya Ramirez  
**3.35-3.49** Madison Darrow, Austan Marshall, Ryan Ohrt, Conner St Clair

#### 5th Grade

**4.0+** Amelia Hendersen  
**3.5-3.99** Aidan Ohrt, Jacob Cassaretto, Lianna Lim, Dakota Strickler, Trey Deutsch, Giancarlo Ghio  
**3.35-3.49** Ember Harris, James Hobbs, Amber Fagundes

#### 6th Grade

**3.5-3.99** Lucy Hessler, Maisy Pearlman, Ashton Bias  
**3.35-3.49** Ben Ely

#### 7th Grade

**3.5-3.99** Josh Kappl, Riley Hessler, Keri Miller, Kira Radanovich  
**3.35-3.49** Ailee Lim, Melanie Radanovich, Sierra Kersey, Anna Wilson

#### 8th Grade

**3.5-3.99** Michael "Leo" Sweeney, Nicole West  
**3.35-3.49** Sha'nece Garrett

## Spaghetti Feed/Carbo Load

HOSTED AT TIOGA HIGH

Benefiting Acadec Shakespearian Festival Trip  
 January 2nd day before the Tioga 5k Run

All Spaghetti made with support from Tioga High Culinary Students

Feed Starts at 4pm / Ends at 6pm

Cost \$10 Adults, \$5 18 & Under, \$25 per family

Eat all the Spaghetti you can handle.

Please let us know you're coming

Preregister by sending payment & # of attendees to:

Tioga Spaghetti

19282 Ferretti Rd., Groveland, CA 95321 -

Or Call 925-719-5687

Tickets will be set aside at the door for you.

Verification calls will be made upon receipt of \$\$

Or visit our Facebook Page "Tioga 5k 1st annual run"

## Tioga High School Varsity Basketball 2014-2015 Schedule

Date	Time	Opponent	Location
1/5	5:00/6:30	Able Charter	Tioga
1/7	5:00/6:30	Lodi Academy	Lodi
1/9	5:00/6:30	Stockton Chr.	Stockton
1/12	5:00/6:30	Delta Charter	Tioga
1/13	5:00/6:30	Able Charter	Seifert Com. Center
1/16	5:00/6:30	Mountain Oaks	Tioga
1/19	5:00/6:30	Hughes Academy	Tioga
1/21	5:00/6:30	Don Pedro	Tioga
1/23	5:00/6:30	Hughes Academy	Stockton
1/28	5:00/6:30	Lodi Academy	Tioga
1/30	5:00/6:30	Stockton Chr.	Tioga
2/2	5:00/6:30	Delta Charter	Delta
2/6	5:00/6:30	Mountain Oaks	Mountain Oaks
2/10	5:00/6:30	Hughes Academy	Hughes Academy
2/12	5:00/6:30	Don Pedro	Don Pedro
2/17	5:00/6:30	Holt Academy	Tioga

Men will play 1st game through 1/23 followed by the Women.  
 Beginning 1/26 Women will play first game followed by the Men

## Tioga High School New Year 5k Run

Wear your Favorite Ho Ho Holiday Socks, Wrap-up & Bring the Children,  
 Harness your dog, Run/Walk with your Family, Neighbors and Friends

Vendor Tables for New Year Resolution shopping available after the race.  
 Support your local High School Basketball Team

**Date: Saturday Jan. 3, 2015 Start Time: 9am**  
**\$25 entry fee**

Run Start & Finish Line will be @ Tioga High School.  
 19304 Ferretti Rd., Groveland, CA 95321

To Register: Mail Registration and Check to:

Tioga High School 19282 Ferretti Rd., (Groveland, CA 95321)

Runners Name: \_\_\_\_\_

Address \_\_\_\_\_

City: \_\_\_\_\_ Zip: \_\_\_\_\_ Phone # \_\_\_\_\_

Shirt Size: Mens XS S M L XL XXL However, shirts will only be  
 guaranteed for preregistered runners.

Runners Liability Release forms will be signed day of race.

Registration is available day of race.

To be a sponsor at this run contact Tioga High School 925-719-5687 cost \$50

Vendor Table for after run sales also available \$10


# WELCOME TO THE HOME IMPROVEMENT DIRECTORY



**Costa's Tree Solutions** Certified Arborist #WE7496A

**Steve Costa**  
Owner  
Fully Insured/Bonded  
C.C.L. #818373

P.O. Box 924  
Groveland, CA  
(209) 962-4468  
(209) 768-4469 Cell



License #545005

## DURLAND ROOFING

Tim Durland, Owner

- Re-Roofing
- Leak Repairs
- Inspections
- Gutters

209 480-0097  
P.O. Box 1373  
Groveland, CA 95321

Serving Groveland and East Bay

## Moore Bros.

Property Development



- New House Starts
- Brushing
- Grading for Drainage, Septic Systems, and Driveways

Lic. #910893  
call Alan at:  
962-5339 or 770-7169



**Karen Faught**  
Owner

Sears Hometown Store #3159  
14691 Mono Way, Sonora, CA 95370  
Tel 209-532-3191  
Fax 209-532-8334  
Service & Parts 1-800-469-4663  
www.sears.com

Locally Owned & Operated



• slip covers •  
• upholstery •  
• blinds •  
• shades •  
• custom window treatments •

**Need Help?**



**ANNA'S INTERIORS**  
962-5421

**BUSINESS CARD ADS FOR AS LOW AS \$19 PER MONTH**

CALL 209.962.0342 FOR MORE INFORMATION

(See Page 32 for FREE Offer)



**green tree**  
property services

- HOUSE PAINTING
- WINDOW WASHING
- HOUSE CLEANING

**209.962.4445**  
LICENSED | BONDED | INSURED | CSL960719



## Pine Mountain Lake Electric

**Residential and Commercial Electrical Contracting**  
State Contractor's Lic. 404081



**TOM KATOSIC**  
209/962-6949

P.O. Box 25  
BIG OAK FLAT, CA 95305

THE NEW SPARKY IN TOWN IS NOW THE OLD MOUNTAIN HAND!

THANKS FOR 5 GREAT YEARS!

## MORRISON ELECTRIC, INC.

**David Morrison**

An Electrical Service Company

Trouble-shooting • Repair • Remodel • Additions  
New Construction • Large Projects

*I return phone calls, I show up on time, I don't quit until the problem is solved.*

Contractor's Lic # 967749 • General Liability Insurance

**962-0481 david@morrisonelectric.com**

ADVERTISE IN THE PML NEWS  
GO TO WWW.PINEMOUNTAINLAKE.COM  
FOR RATES AND INFORMATION

Call your local Pro!



## Jack Proctor

Heating & Air Conditioning

- Complete commercial & residential services
- Service & repair - all makes and models
- Heating & ventilation
- Heat pump specialist
- Air conditioning troubleshooting expert
- Installation and remodeling
- Upgrading & energy efficiency
- We offer the same low rates 24/7

OFFICE 209-962-6471  
CELL 209-678-8915  
License #313926 Since 1975

Before replacing your unit, ask us for a 2nd opinion. Chances are, we CAN repair it!

## JAMES PRICE CONSTRUCTION


CA. Lic. No. 591995

### DECK SPECIALIST

- Professional Machine Sanding •
  - Pressure Wash and Sealing •
  - Pickets & Metal Railings Installed •
- Hardware Retrofit "For a Safer Deck"**
- Repairs and More •

Call 209-962-0486  
email: designbild@earthlink.net

Clean, more affordable energy  
Get NO COST solar today! Call John Kirby at 209.968.1588



**SolarCity**

Lock in at a low rate. Don't pay PG&E high tier rates



Find advertising rates, information, and more at [www.pinemountainlake.com](http://www.pinemountainlake.com)

## HEAVENLY CLEANING SERVICE

PROFESSIONAL HOUSEKEEPING  
AND CARPET CLEANING

*Going on our 20th Year!*



HOME OFFICE CARPET WINDOWS

**RENTING YOUR HOME TO VACATIONERS?**

LET US HELP MAKE IT EASIER

BY DOING MORE THAN JUST CLEANING

WE OFFER TRASH REMOVAL, DECK BLOWING,  
BBQ CLEANING & CHECK PROPANE, AND LAUNDRY SERVICE  
WE TAKE PICTURES OF ANY DAMAGES

**GIVE US A CALL TODAY - 209.962.6418**

[heavenlycleaning@mail.com](mailto:heavenlycleaning@mail.com) • FULL LIABILITY COVERAGE

## Bert's Weedeating and Lot Clearing

◆◆ 962-6724 ◆◆



Voted  
"Best Flooring/Carpet" and  
"Best Window Coverings"  
2006, 2007, 2008, 2009, 2010, 2011,  
2012, 2013, 2014



- Carpet
- Laminate
- Vinyl
- Hardwood
- Ceramic Tile
- Countertops
- Window Coverings



25% off Hunter Douglas  
Window Coverings  
Or  
Free Furniture Moving  
with your flooring  
purchase

\*see store for complete details

263 S. Main Street, Angels Camp, CA 95222 (209) 736-8077  
12900 Mono Way, Sonora, CA 95370 (209) 532-1696  
[www.pinnellscarpetoneangelscamp.com](http://www.pinnellscarpetoneangelscamp.com)  
[www.pinnellscarpetonesonora.com](http://www.pinnellscarpetonesonora.com)

## INSPECTION RIBBONS? FIRE SAFETY LET US HELP!



## LOREN SNIDER'S TREE SERVICE

### Serving Your Tree Needs

Big or Small We Do Them All

Removal & Pruning • Clearing & Hauling  
Chipping & Stump Grinding • Mistletoe Removal

Home: 209-878-3828 • Cell: 209-402-9797

25+ Years and Insured

## PML MINI STORAGE

65 Units Ranging From 5'x5' to 12'x30'

- REASONABLE RATES •
- WELL LIGHTED •

Located one-half block off Ferretti Rd. on Elderberry Way towards Airport

**209/962-6220**



# PAINTING

Bay Cal  
LIC #923832

Exterior/Interior  
Deck Repairs  
Wood Repairs  
Remodels



SEE COLOR AD PAGE 13

**209.962.4777**  
www.baycal.com • email: davec@baycal.com

## REIMERS CONSTRUCTION

PROUDLY SERVING GROVELAND/PML SINCE 1987

DESIGN/BUILD • EXPERT REMODELING • SPECIALIZE IN KITCHEN AND BATH  
CEMENT SIDING • COMPOSITE & REDWOOD DECKS • WINDOW AND DOOR REPLACEMENT

**(209) 962 5682**





This project designed and constructed by Reimers Construction

Email: wwrpar@gmail.com  
CA.LIC. 590514



**BEFORE** **AFTER**

## A AMERICAN ELECTRIC & SERVICE CO.

COMMERCIAL • INDUSTRIAL • RESIDENTIAL

**209.962.7374**

ELECTRICAL CONTRACTORS LIC. # 465220

## Rod Diehl Pest Control

"The Best Deal in Pest Control"

RESIDENTIAL & COMMERCIAL  
HIGH QUALITY  
100% SATISFACTION GUARANTEED

Locally Owned & Operated  
5th Generation Tuolumne County

**209-962-4560**

SERVING THE PINE MOUNTAIN LAKE / GROVELAND AREA

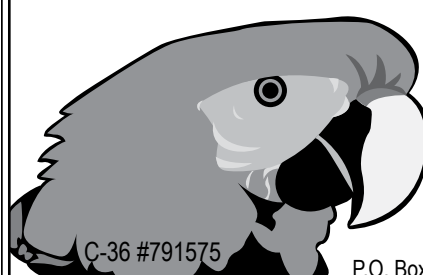
FREE ESTIMATES

## PARROT PLUMBING

MILT LAKE  
Owner / Operator  
**209-852-2267**

Serving Groveland, Don Pedro & Coulterville  
HOME PLUMBING REPAIR SEMINARS  
call (209) 962-0850 for date and time

P.O. Box 127, Coulterville, CA 95311 • Email partman@inreach.com



### Sierra HEAVY DUTY

Parts & Service

**On Site - Well Stocked Parts House**  
Hydraulic Hose Shop:

- Cat Flange, J.I.C.
- O-Ring Face
- Metric Fittings in Stock
- #4 (1/4") thru #32 (2")
- Low, Medium and High Pressure Hose (Including 6000 PSI Drive Hoses in Stock)
- Hydraulic Cylinder Repair
- Hydraulic Pump and Motor Service
- A/C Hoses

**Fleet Services** on our site or yours with a personal call when service / maintenance is due!!!

**Sierra Heavy Duty Parts & Service**  
18968 Waylon Way  
Sonora, CA 95370  
Call or email for an appointment today  
Shop: 209.532.7994  
email: steve@sierraheavyduty.com

**Hours**  
Mon-Fri 7 AM - 6:30 PM  
Saturday 8 AM - 2 PM  
Sunday Closed  
After Hours Emergency 559-3840

Deliveries From The Valley Daily!!  
Pick Up and Deliveries to Your Door!!  
**Next Day Special Orders Is Our Specialty!!**

**Full Service Heavy Duty Repair Shop**  
Parts & Service for All Heavy Duty Trucks & Tractors

**Full Service RV Repair Shop**  
Parts & Service for All Recreational Vehicles



125 Indoor Secured Storage Spaces

## HANDYMAN FOR HIRE

"The Small Job Specialist"



Doing Building and Repairs in PML Since 1976  
WHERE ONE CALL CAN DO IT ALL!!!  
**Working by the Hour to Save you Money...**  
ETC = Our Cabin Care Services Available

- General Maintenance
- Deck Repairs
- Weedeating
- Property Checks, weekly or ?

- Interior Repairs
- Exterior Repairs
- Painting
- House Cleaning Available

• And more, just ask

Member of Yosemite Chamber of Commerce  
omni1handyman@aol.com  
**(209) 962-5463** License

# Cobblestone Homes

• Custom Homes • Additions • Remodels •  
 • Specializing in high country design/build since 1989 •  
 We provide superior craftsmanship, attention to detail,  
 follow-up, and great customer service.

Craig Lawrence-Owner  
 209.404.0290 Lic. 564665

# HOPE'S TREE SERVICE

Lic# 987171

EXPERT TREE SERVICE, PRUNING,  
 REMOVAL, CUT & STACK OR HAUL AWAY  
 FULLY LICENSED/INSURED



**HOPE'S  
 TREE SERVICE**

Fully Licensed and Insured

Proud member of the  
 Yosemite Chamber of  
 Commerce

We accept credit cards



**209.878.3096**  
 or **209.225.3191**

Over 25 years of construction experience Highly Disciplined and Dependable

**We have expertise in all phases of construction including:**

- Decks and staircases
- Dock and gangway repairs and replacement
- Kitchen and bath remodels



# Hilltop Homes

General Building Contractors  
 Lic #931547 Fully Insured

**209-986-7755**

Pine Mountain Lake Homeowners Steve and Cindy Watts

## Pioneer Cleaning

RCE Enterprises Incorporated  
**PROVIDING SERVICES SINCE 1987**  
 when **SECURITY** is an issue  
 Custom Cleaning—Rentals—Vacation Homes  
 We are here when you can't be  
**Property Management**  
 Patricia & Richard Clontz  
 22600 Sandean Ln. Groveland CA 95321  
 962-1934

# Ken's Asphalt

Lic. 708310

Grading • Paving • Chip Seal • Road Oil

Seal & Slurry Coatings • Crafcro Hot Rubberized Crack Sealer

Driveways • Private Roads • Subdivisions



## DRAINAGE PROBLEMS?

**We have the Solution!**

Erosion Control • Riprap (6-12" Rock) • Asphalt Curbing • Base Rock



## Complete Concrete Services



- Stamped Concrete and Colored Concrete
- Driveways
- Stained Concrete
- Walkways
- Cleaning & Sealing
- RV Pads
- Retaining Walls
- Patios

532-0800 • 962-5644 • 768-7395 Cell

# Waters Plumbing Heating & Air

**FAST**  
 SAME DAY  
 SERVICE\*  
\*IN MOST CASES

All work 100% Guaranteed!

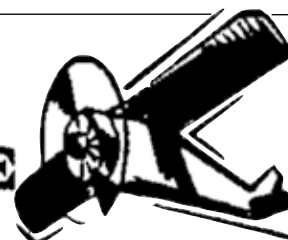


Contractors License #463958  
 www.watersplumbing.com

"I want you to know that our technicians will give you a price before we start the job." —Wayne Waters

**Groveland (209) 962-0990**

# AIRPORT MINI-STORAGE



60 Units - 6'x8' to 10'x30'  
 Open 7 a.m. to 9 p.m. Daily

Located on Elderberry Way off Ferretti Rd. near PML Airport

**209/962-5360**

# CLASSIFIEDS

Submission deadline is the 15th of the month. Submit at [www.PineMountainLake.com](http://www.PineMountainLake.com)  
 Cost is \$0.30 per word. Ads run until canceled by advertiser.

## FOR SALE

**VISION MAGNIFIER FOR THOSE WITH MACULAR DEGENERATION**  
 \$1,800. Read again with 2.2 - 90 magnification. Portable with carrying case. 15.6" monitor. Like brand new. Purchased at \$3,200. Only used few times. **925-321-6285**

## TANDEM NEXUS KAYAK FOR SALE

Great condition, only used on the lake!  
 Paid \$750, asking \$400. **408-391-2552**

## 2006 CROWLINE SKI BOAT

19' with trailer. One owner, excellent shape, low miles, seats 8 and includes a custom cover. Asking \$19,500.00. Located in Groveland area. Call **925-216-7981**

## WHIRLPOOL WASHER/DRYER

Cabrio series. Like new. Not even 1 year old. **\$799 OBO** for the pair. **962-1979**

## COMMERCIAL RENTAL/LEASE

### COMMERCIAL WAREHOUSE/SHOP/STORAGE

Ferretti Rd. near Airport. Easy access, 12'x20' roll up doors, insulated, 220 and 3-phase available, vented skylights, restrooms. 2 bay, 1400 sq. 600.00 per month; 3 bay, 2100 sq. 900.00; 5 bay, 3500 sq. 1500.00. Includes water and sewer. **209-962-6014**

ask for John, Owner/Broker

## GRAZING PASTURE

in downtown Groveland. For Rent at \$300.00 per month or \$100.00 per horse. Call Terry **650-520-1022**

## LAND FOR SALE

### LOT FOR SALE

Nearly level, ready to build lot. Unit 6-146 on Cottonwood St. Motivated to sell. **\$12,500. OBO 650-866-4721**

### PRIME 1.74 AC LOT NEAR AIRPORT

Gentle slope. Southern exposure with panoramic view. Very private. Sewered. U11/L56 Elderberry Ct. For more info call Cell **209-768-4406**

### LARGE LEVEL, EASY BUILD, SEWERED LOT

Unit 3/ Lot 122 - Nob Hill Circle On quiet street close to the Lake Lodge, Fisherman's Cove and Tennis Courts. **MAKE OFFER.** For information call **209-962-4617**

## RENTALS WANTED

### EXCELLENT TENANTS

w/excellent credit and rental history looking for homes to rent. Owner approves tenant before placement. Call *Yosemite Region Resorts* **800/962-4765**

## GET YOUR AD NOTICED



Place a photo of your item for sale (car, truck, house) with your classified ad for just \$10. Call 962-0342 today.

## HOMES FOR RENT / LEASE

### VERY NICE 2 BEDROOM

1.5 Baths, Chalet Style Home, Fplc., Deck, walk to PML Beach, Country Club and Downtown Groveland. 12412 Tannahill Drive, Groveland. **\$800.00.** Call Terry **650-520-1022** or email to: **hr1107@comcast.net**

## SERVICES

### FOR YOUR REVERSE MORTGAGE, REFINANCE, NEW HOME LOAN PURCHASE NEEDS

Call GREAT CENTRAL MORTGAGE Corporation at **209-962-6239** or Main Office **209-632-3200.** CA BRE License #01135634, CA BRE License Information # 916-227-0931. NMLS #237919

## ABLE HELPERS

Experienced in small repairs, plumbing, electrical, painting. Power washing: decks, cars, etc. Detailing, organizing, windows, gutters, etc Free Estimates. Excellent references. Call Nancy and Sue. **962-5140** Reasonable, Reliable, Established, Local.

### BERT'S WEEDEATING AND LOT CLEARING

**COMPUTERS** custom built, upgrades, trouble-shooting, free consultation. **209/962-7110**

## SERVICES

### PROFESSIONAL PROPERTY MANAGEMENT

RE/MAX Yosemite Gold Patricia (Tish) Fulton BRE# 00760019 Property Manager Certified by California Association of Realtors **209-962-0837**

**HANDYMAN** - For removal of unwanted items. Have 20 foot enclosed trailer, need something moved? **Also, tree trimming available.** Call Mike, very reasonable rates. **209-962-0777**

### GOT WEEDS?

Contact Jim Atkins at **209.985.4376.** Lot Clearing, Hauling, Dump Runs, Weedeating. Local Guy. References available.

### ELECTRICAL A AMERICAN ELECTRIC & SERVICE CO. Lic. #465220 209/962-7374

### LINDA'S LOVING CARE

Local, Reliable, Caring and Responsible - Caring for a loved one - House sitting - House cleaning - Rides to Doctor's appt., etc. Call Linda **209-985-2363** cell

### COSTA'S TREE SOLUTIONS

Steve Costa, Owner Fully Insured/Bonded C.C.L. #818373 **209-962-4468** Cell **209-768-4469** Certified Arborist #WE7496A

### SUTTON'S LANDSCAPE & MAINTENANCE C27 #483019

Design, Installation & Maintenance Renovation & Clean-ups Tree, Shrub & Lawn Planting/Replacement Entertainment & Pool Area Landscape. Decks, Patios, Walkways Seating & Retaining Walls Stamped & Colored Concrete Pavers, Flagstone, Brick, Arbors, Pergolas, Gazebos, Water Features, Irrigation & Drainage, Landscape Lighting, Outdoor Kitchens **209-244-3500**

## SERVICES

### BIG JOHN HANDYMAN SERVICES

Yard Maintenance, House Maintenance and moving households Call John **962-6163**

**LOVING PET CARE** in my home or in yours - garden care also available. Call Barb **962-5653** or email at **Tedbear1@sbcglobal.net**

### RONNING ROOFING

Call Joe for all your Roofing and Gutter needs. Licensed, Bonded, and Insured. License # 976739 **209-962-6842**

### LOREN SNIDER'S TREE SERVICE

27 years expert, safe tree work. All sizes and types of trees. General pruning, ornamental pruning, weight reduction with drop crotching method, mistletoe removal, expert technical tree removal, dump truck chipper, stump grinder, liability insurance, local references, **Responsible, Reputable, Reasonable, Reliable, Rapid Service. PREFERRED PML VENDOR 209-878-3828 / cell 209-402-9797**

### HOMEOWNERS INSURANCE

I moved to Pine Mountain Lake from the Bay Area with 23 years as an independent insurance broker. I write business with most standard Insurance Companies for California homeowners. Call, fax or email me for a quick quote and get that personal local service you deserve. **Commercial Business Insurance Agency, Inc. Jess Skelley** CA Broker Lic# 0F50039 **209-732-3514 office 800-726-4889 fax** [www.cbi-agency.com](http://www.cbi-agency.com) email [jess@cbi-agency.com](mailto:jess@cbi-agency.com)

## VACATION RENTALS

### LIFE'S A BEACH!

Vacation at our Tropical Paradise in sunny Ewa Beach, Oahu, Hawaii [NaniMoanaHale.com](http://NaniMoanaHale.com) (209) **962-4396**

### PANORAMIC LAKEFRONT

boat dock, decks, air, 3bd/2ba, Beautiful Views **650/961-6334**

**GOT SOMETHING TO SELL? NEED TO ADVERTISE A SERVICE?**  
 Get it done with the PML News Classifieds  
 Advertise in the Classifieds for just \$0.30 per word.

## Flinchum Masonry

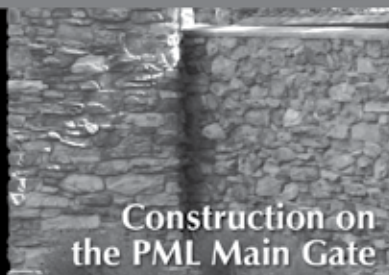
Stone • Brick • Block Work  
 (Pressure washing & sealing available)

Call **209.962.6084**

Small Jobs Welcome

**John Flinchum**

Lic. #609489  
 Insured



## PMLA LOTS FOR SALE

PMLA OWNED LOTS FOR SALE:

Unit/Lot Numbers Street	Asking Price
1/500 Upper Skyridge	\$1000
2/020 Mueller Drive	\$1000
4/232 Point View Drive	\$1000
6/056 Cottonwood Street	\$1000
8/006 Sunnyside Way	\$1000
8/007 Sunnyside Way	\$1000

For further information regarding this property please contact PMLA at (209) 962-8600



**20808 Crest Pine-3/481 LOOKS LIKE NEW!** Spacious, single-level home, with granite counters, pellet stove, central H/A, jetted tub in master bath. Covered patio, surrounded by lovely oak trees. Near Fisherman's Cove, tennis, Lake Lodge, beach and Equestrian Center. \$268,999 #20130184



**19823 Cottonwood-6/106 THE "LIBERTY" HOUSE.** Cute cabin with 3bd, 1ba on the corner of Cottonwood & Ferretti Rd. Knotty-pine walls and retro-style interior. Enjoy all the amenities of Pine Mountain Lake, yet have easy access w/o going through the gate. Potential for a cozy get-away. Needs some tender loving care. \$68,000 #20140909



**19753 Butler Wy-8/290 IT'S A BREEZE-WAY** to the front entrance of this cozy home, with Stone fireplace/pellet stove insert. French doors in living room, quartz kitchen counters & tile flooring. Newer fixtures, ceiling fans and 2 remodeled bathrooms. Plenty of storage downstairs & underneath the house. Powder-coated metal deck railings. Horse-shoe pit. \$264,000 #20141837



**19555 Chaffee Cir-1/101 CUSTOM HOME** near Dunn Court beach. 3bd, 2-1/2 bath, 2064sf. Free-standing fireplace in living room. Formal dining, downstairs family room & private deck off master bedroom. Double-pane windows, A/C & forced-air heating, dual sinks, vanity & jetted tub. Finished, oversized garage, with cabinets, shelves and workbench. \$285,000 #20141424



**12600 Cresthaven-4/45 A PERFECT LOCATION.** Near the Lake Lodge beach and tennis courts. Two-level home, with open kitchen & dining area. 3bd, 3ba, 2100sf. Central h/a, woodstove, jetted tub. Additional space downstairs can be used as bonus or 4th bdrm. Large covered deck and garage to accommodate an RV or boat! Established vacation rental. Most furniture incl. \$275,000 #20140445



**12762 Mt Jefferson-1/154 NEAR THE LAKE** and Dunn Ct beach. Beautiful 4bd, 3ba, 2914sf home features a rock fireplace in the living room, renovated kitchen with Corian counters & maple cabinets. Large office and bonus room. 2-car garage with workshop and 1/4 bathroom. Great location for vacationing or full-time living. \$369,900 \$20141276



**20019 Bluebell Ct-13/56 SIMPLY ADORABLE CABIN.** Two-story, 3bd, 2ba. Get a cozy, country feeling, with a wood-burning stove and loft master bedroom. Lovely woody setting, quiet cul-de-sac location and minutes from the main Marina, lake & beach. Wonderful for vacationing, full-time living or investment. Established vacation rental with repeat guests. Short Sale--Subject to lender approval. \$150,000 #20141997

## NOW ACCEPTING HOMES for our LONG-TERM & VACATION RENTAL PROGRAMS

### GENERATE INCOME FROM YOUR PML HOME!

#### VACATION RENTALS

- Aggressive Advertising Campaign
- Online and Telephone Reservations
- Pre-Arrival Inspections Insure an Excellent Guest Experience
- Professional Cleaning After Every Guest
- Damage Protection Eliminates Worries About Your Home and Furnishings



Like us on Facebook  
More than 28,000 others have!

#### MONTHLY RENTALS & TENANT PLACEMENT

- Extensive tenant screening and credit reports
- Move in, move out and periodic inspections
- Scheduled maintenance and repairs

#### PROPERTY MANAGEMENT

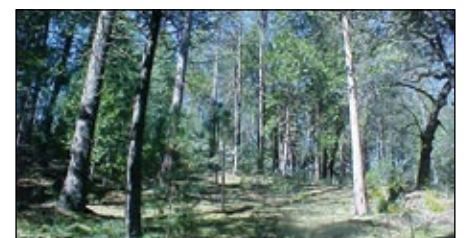
- 24/7 Emergency services available
- Monthly statements and owner payments
- Local, state and federal tax requirements



**12346 Mills-8/90 POSSIBLE LAKE VIEW** by thinning some trees. The seller says that the lake view is what sold them on this home years ago, but the trees have grown and blocked the view. Three-levels, double-pane windows, granite kitchen counters, bonus room, wood fireplace, 3bd, 2ba, walk-in master closet and garden tub. Paved driveway and newer, large deck. 1-car garage. \$199,900 #20140951



**14610 Mono Wy DOUBLE-WIDE MOBILE HOME** in Sonora Park. Great open layout with large bedrooms and large inside laundry room/pantry. Laminate flooring throughout most of the home, new roof in 2009. Covered porch, deep carport for 2 cars, storage shed. Community pool and recreation room. Excellent location, near shopping and easy access to 108 bypass. \$14,900 #20141619



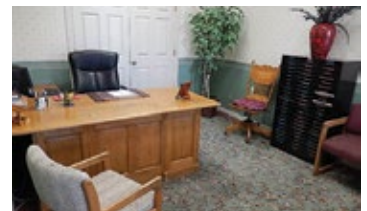
**20273 Upper Skyridge-15/Par.D MERGED LOTS** with a filtered lake view. Backs to greenbelt. Plenty of room off a quiet one-way road, near the Pine Min Lake Marina. This is a fantastic piece of land! All utilities are available for your dream home on this .88 acre parcel. \$69,000 #20131903

18687 Main Street, Suite A, Groveland, CA

209-962-1111

www.yosemiteregionresorts.com

### NOW LEASING EXECUTIVE OFFICE SUITES • FROM \$250 PER MONTH • ASK FOR JOHN • 962-6014



Private & Semi-Private Suites with Shared Entry & Lobby, Conference Room, Kitchen, Restrooms, DSL & Wifi, Utilities, Janitorial Service & Security Alarm



ROB STONE  
OWNER/REALTOR  
BRE #01025463



BJORN WAHMAN  
BROKER  
BRE #00706559



TARA STONE  
MANAGER/CFO  
BRE# 01106544



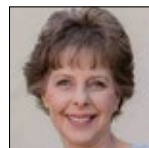
LIZ MATTINGLY  
BROKER ASSOC.  
BRE #00709618



TED BIANCHI  
REALTOR  
BRE #01318805



SHIRLEY ECKHART  
PROPERTY MANAGER  
BRE #01506396



SHARRON WAHMAN  
EXEC. ASSISTANT  
RESERVATIONIST



CAPRICE KROW  
PROP. MGR/LDP  
BRE# 01179023



CORY STONE  
PHOTOGRAPHER  
VIDEOGRAPHER