

2010 PINE MOUNTAIN LAKE ACTIVITIES GUIDE



Fun for Everyone at Pine Mountain Lake



PineMountainLake.com

Table of Contents

PML Clubs	3	Around the Lake	14
PML Phone #s.....	3	Hiking & Walking Trail Maps	16
The Grill Breakfast & Lunch Menus.....	4	Independence Day	18
The Grill Dinner Menu.....	5	Marina	20
Activities & Events	6	Marina Grill.....	21
Tennis	7	Swimming Pool.....	22
Golf.....	8		
Campground	10		
PML Map	12		



Yosemite Region Resorts
VACATION RENTALS

RESERVE YOUR NEXT VACATION ONLINE ANYTIME
 VIEW ALL OF OUR HOMES IN HIGH DEFINITION
 FULL SCREEN VIRTUAL TOURS

www.YosemiteRegionResorts.com

800.962.4765
209.962.4396

Located in Mountain Leisure Center
 18687 Main Street • PO Box 19
 Groveland CA 95321

VACATION RENTALS • LONG TERM RENTALS • PROPERTY MANAGEMENT

PINE MOUNTAIN LAKE REALTY
An Agent Owned Company



Bruce "Red" Rossio
 Broker / Owner
 DRE#01429140



Lynn Bonander, GRI
 REALTOR® / Owner
 DRE#00683485



Val Bruce
 Broker Assoc. / Owner
 DRE#00578336

**WHEN EXPERIENCE
 COUNTS—
 COUNT ON US!**



Parker "PJ" Johnson
 REALTOR® / Owner
 DRE#01732298



NOTARY SERVICES AVAILABLE!



Barry T. Scales
 REALTOR® / Owner
 DRE#00451887

Available to serve you 7 Days a Week! Call 209-962-7156
www.pmlr.com ~ 18919 Main St. Suite A, Groveland, CA

CHECK OUR WEBSITE FOR FURTHER INFORMATION ON UPCOMING EVENTS
PINEMOUNTAINLAKE.COM




YosemiteGoldVacations.com

Vacation Rentals
65 Unique Homes to Choose From
 View interior and exterior pictures of our rentals
 and check the availability calendars live.
 Enjoy the EASE of "on-line" reservation booking, or call
Toll Free 877-962-7180

New Location: 18688 Highway 120, Groveland
 Open 7 Days a Week For Your Convenience
E-mail: YosemiteGold@Goldrush.com




*"diligent follow-up" "sincere representation of clients and their interests"
 "utmost intelligence, honesty and integrity" "made the whole experience
 smooth and easy" "handled it with tenacity and expertise" "very patient
 and conscientious" "no pressure" "complete flexibility" "detailed plan of
 action and realistic advice to sell my house" "always available for my
 questions" "bent over backwards to serve us" "went out of her way to
 insure that we were satisfied with our purchase" "attentive to detail,
 very professional, and at the same time, very personable"
 "developed an excellent understanding of
 our needs and interests"*

*"pleasant,
 competent, and
 timely attention
 given to the details
 of the transaction"
 "she had all the
 answers and it
 felt good"
 "willingness to do
 things that I couldn't
 because of distance was superb
 service for an absentee seller"
 "100% helpful from beginning to
 end of our transaction" "friendly, accommodating, and knowledgeable"
 "gave us a lot of confidence"
 "made the daunting process of buying my first home a pleasure"
 "expert negotiating skills" "always returned calls promptly"
 "outstanding job of selling my land under trying circumstances"*

Lauree@GoldRush.com
Pine Mountain Lake
and Beyond ...





**(888)
 962-
 4080**

**For 50 more reasons to hire Lauree Borup as your
 Realtor, go to www.Lauree.com: "What Clients Say"**

PML ORGANIZED GROUPS, CLUBS, CLASSES

AVIATION ASSOCIATION Mike Lella	962-1822	FRIENDS OF THE LAKE Bill Bent	962-4579	MEN'S 9-HOLE GOLF CLUB Wally Child	962-0723	RACQUET CLUB Al Rodriguez	962-6457
COMPUTER USER GROUP Frank Perry	962-0728	GARDEN CLUB Lorraine David	962-6008	MONDAY BRIDGE CLUB Bill Parker (Men)	962-5957	RESIDENTS CLUB Dick Faux	962-4617
COUNTRY MOUNTAIN RIDERS Luke Sullivan	962-5952	GUARDIANS OF PML John Nielsen	962-4934	NON-RESIDENTS GROUP Kathy Coon	510-656-0162	ROOFBB Linn Faler	962-5395
CRAFT GUILD Lee Isbell	962-5727	LADIES CLUB Catherine Santa Maria	962-7904	PINE NEEDLERS QUILT GUILD Lillian Cravens	962-4301	SIERRA PROFESSIONAL ARTISTS Heinie Hartwig	586-1637
DANCE PARTY Carol Stevens/Bob Digby	962-7254	LADIES GOLF CLUB Eleanor Ellis	962-4996	PMLAKERS RV CLUB Janie Stivers	962-1821	SUNDAY COUPLES GOLF Alma Frawley	962-5578
DUPLICATE BRIDGE Bobbie Vandenberg	962-6965	MARATHON BRIDGE Marilyn Hathaway	962-7595	PML NINERS (LADIES) Pat Price	962-7431	WINDJAMMER SAILING CLUB Kurt Petersen	925-462-7873
EXERCISE GROUP Barbara Elliott	962-6457	MEN'S GOLF CLUB Arlene Roberts	962-7848	PML WATERSKI & WAKEBOARD CLUB Tom Duprey	510-796-4180		
		Gary Oing	962-1959				

CONTACT INFO

Administration & Amenities Mailing Address — Pine Mountain Lake Association • 19228 Pine Mountain Drive • Groveland, CA 95321

ADMINISTRATION OFFICE HOURS OF OPERATION

Monday - Friday 8 am - 4:30 pm (Open during lunch)

ADMINISTRATIVE OFFICE DIRECTORY

(All numbers are 209 area code)

In order to avoid delays in assistance, please direct your inquiries to the proper extension. This will assist our staff in handling your questions as quickly as possible.

• Accounting	962-8618
• Accounts Payable	962-8626
• Accounts Receivable	962-8607
• Controller (Accounting Procedures)	962-8606
• The Grill Restaurant	962-8638
• Delinquent Assessments	962-8607
• E.C.C. Coordinator (Plan Submittals, Compliance Fees)	962-8605
• Fire Mitigation	962-1240
• Gate Cards, Address Changes, Mergers	962-8632
• General Information, Receptionist	962-8600
• General Manager, Administrative Assistant	962-8627
• General Manager Ass't	962-8604
• Golf Pro Shop	962-8620
• Golf Snack Shack	962-5058
• Lake Lodge	962-8629
• Lake Lodge Inquiries & Reservations	962-8600
• Marina Store - seasonal	962-8631
• Marina Lakeside Café - seasonal	962-8630
• Main Gate (Tennis & Campground Fees, General Security Inquiries, gate passes)	962-8615
• Maintenance/golf	962-8610
• Maintenance/streets	962-8611
• PML News, Advertising - Sabre Design	962-0342
• Pool - seasonal	962-8634
• Rental Program	962-8600
• Stables	962-8667

INTERNET DIRECTORY

• Accounts Payable, Michelle Brown	pmlap@pinemountainlake.com
• Accounts Receivable, Karen Peracca	pmlar@pinemountainlake.com
• Accountant, Sr., Stacy Gray	stacy@pinemountainlake.com
• Administrative Assistant, Debra Durai	debra@pinemountainlake.com
• Assistant Controller, Gene Zaroni	accountant@pinemountainlake.com
• Campground	campground@pinemountainlake.com
• Controller, Ken Spencer	controller@pinemountainlake.com
• The Grill Restaurant Manager, Jay Reis	clubmgr@pinemountainlake.com
The Grill Restaurant Hospitality Coordinator, Bambi Johnson	cluboffice@pinemountainlake.com
• Director of Safety, John Edner	safety@pinemountainlake.com
• Patrol/Dispatch, Sgt. Natalie Moffitt	dispatch@pinemountainlake.com
• Patrol Sgt, Ron Prieto	patrol@pinemountainlake.com
• ECC, Sandy Golden	ecc@pinemountainlake.com
• Fire Mitigation, Dennis Pipal	compliance@pinemountainlake.com
• General Info, Receptionist, Ivonne Deckard	admin@pinemountainlake.com
• General Manager, Joe Powell	joepowell@pinemountainlake.com
• General Manager Assistant, Rick Whybra	rick@pinemountainlake.com
• Golf Shop/PGA Pro, Tony Murphy	tmurphy@pinemountainlake.com
• Human Resources, Allie Henderson	pmlhr@pinemountainlake.com
• Maintenance - Streets Manager, Tom Moffitt	tmoffitt@pinemountainlake.com
• Maintenance - Golf Manager, Alan Macdonald	amacdonald@pinemountainlake.com

• Maintenance Department, Susan Capitanich	maintenance@pinemountainlake.com
• Marina Manager, Doug Keller	marina@pinemountainlake.com
• Pine Mountain Lake News, Editor/Design, Sabre Design	pmlnews@sabredesign.net
• PML Pool Manager, Theresa LeBarre (seasonal)	pool@pinemountainlake.com
• Property Owner Relations, Gate Cards, Mergers, Address Changes, Nancy Perry	nancy@pinemountainlake.com
• Rental Program, Ivonne Deckard	admin@pinemountainlake.com
• Stables, Lester Scofield	stables@pinemountainlake.com
• Webmaster	webmaster@pinemountainlake.com
• Pine Mountain Lake Website	www.pinemountainlake.com

LOCATION OF PAY PHONES

• Campground (restrooms)	962-8931
• Dunn Court Beach	962-8929
• Lake Lodge	962-8933
• Main Gate (restrooms)	962-8938
• Marina	962-8936
• PML Airport	962-8966
• Stables	962-8957
• Tennis Courts (Pine Mtn. Dr.)	962-8928

To reach the Main Gate dial *81 from any of these pay phones.

PML NEWS ONLINE

The current edition is posted on or before the first of the month and offered in easy-to-download pdf format. Older editions are available. To download go to www.pinemountainlake.com/pmlnews.html

For Ad Rates & Submission Guidelines: go to www.pinemountainlake.com/pmlnews.html

All submissions are due by the 10th of the month for the following month's edition. (Example: June 10 deadline for July edition.)

THE GRILL
12765 MUELLER DRIVE

Restaurant 209.962.8638
19th Hole Lounge 209.962.8636

The Grill at PML presents full-service family dining. We offer a Continental Cuisine dinner with something for everyone's taste including: steaks, seafood, chicken, pasta, vegetarian, and a children's menu. For current menu pricing check www.pinemountainlake.com.

The Grill at PML presents lunch with all the favorites and fast friendly service with a smile. Come and dine on our terrace with unparalleled views of the Yosemite peaks and golf course. We are here to serve you!

The Grill Restaurant is open the following three 2010 holiday Mondays: Memorial Day, May 31st, Independence Day, July 5th and Labor Day, Sept. 6th for Breakfast 9 am to 11 am, Lunch 11 am to 2 pm - regular lunch menu offered.

Times subject to change without notice. Call for information or reservations

LUNCH MENU

All prices and menu items subject to change anytime. Automatic 18% gratuity for tables of 8 or more. We reserve the right to refuse service to anyone. Call for reservations.

Grilled Flatbread

White: alfredo sauce, grilled chicken & shaved parmesan cheese

Margherita: heirloom tomatoes, basil & mozzarella with fresh marinara

Add a salad for a great, light meal!

SALADS

Black & Blue

seared top sirloin steak on a bed of mixed field greens with candied walnuts & blue cheese, tossed lightly with balsamic vinaigrette

Chipotle Ranch Chicken Salad

grilled chicken, crisp romaine, grilled white corn, pico de gallo, avocado, shredded jack and crispy tortilla strips tossed with our spicy chipotle ranch dressing

West Coast Louie

fresh crab, oregon bay shrimp and gulf prawns over a bed of crisp greens with avocado, egg, tomato, cucumber and traditional louie dressing

Chicken Caesar

grilled chicken & crisp romaine tossed with classic caesar dressing, garlic croûtons & parmesan cheese

THE GRILL BURGER

1/2 pound of 100% fresh ground angus chuck lightly seasoned with kosher salt & black pepper served with the traditional lettuce, tomato pickle & onion on a locally baked soft roll or onion roll grilled to order over an open flame & served with french fries

add aged cheddar, blue cheese, american, swiss, caramelized onions, mushrooms, applewood bacon or avocado

try it bun-less with a small caesar salad

Sliders, three mini burgers with chipotle ranch, cornichons, lettuce & tomato

Boca Burger, not as much fun but healthier, served on nine grain

THE GRILL Burger

SANDWICHES

(served with french fries, field greens or fresh fruit)

The Patty Melt

1/2 pound burger served on grilled rye with caramelized onions, swiss & cheddar cheeses

Boston Steakbomb

shaved sirloin with onions, peppers & mushrooms on a grilled steak roll, a "back bay" favorite

Grilled Chicken on Nine Grain

with roasted red peppers, avocado, spanish onions and a side of chipotle ranch

French Dip

thinly sliced sirloin on a crispy french roll, au jus

Shrimp Po' Boy

a classic po' boy with a contemporary twist, served on a soft roll with white corn relish, coleslaw and sweet potato fries

Traditional Club

double layer b.l.t. with roasted turkey

Hot Pastrami

lean, shaved pastrami on an onion roll with melted swiss & dijon mustard

FEATURES

Grilled Mahi Mahi Sandwich

marinated in chardonnay & citrus on a soft roll with tartar & chipotle ranch, served with seasonal field greens

Slow Roasted Chicken Pasta

pulled chicken, tomatoes, veggies, mushrooms & scallions finished with parmesan and served with garlic bread

Misted Greens

with Orange Muscat Vinaigrette
mixed field greens lightly misted with house-made fat free dressing, tossed with seasonal veggies
calories 95, total fat 1.5 g, sat fat .25 g, protein 5 g

Crispy Shrimp Tacos

pico de gallo, cilantro, avocado, spicy "cream" & seasonal greens served with white corn relish and field greens

Memphis Pulled Pork Sandwich

slow roasted pork shoulder finished with "sweet baby rays" bbq sauce, served with white corn relish, sweet potato fries and pickles

BREAKFAST

Build your own Omelet

three egg omelet with country potatoes, toast & fresh fruit choose any three items

mushrooms, tomatoes, chopped bacon, sausage, ham, bell peppers, cheese, avocado, artichokes (egg beaters available upon request)

Whites & Greens

fresh egg whites, tomatoes, mushrooms and wilted spinach served with sliced heirloom tomatoes and fresh fruit
(calories 140, total fat 1 g, sat fat <.25 g, protein 17 g)

Eggs your Way

Breakfast Meats

two eggs served with your choice pit smoked natural ham, thick of breakfast meats, country potatoes, sliced applewood bacon, pork, toast and fresh fruit
sausage available as sides

Eggs Benedict

a classic served with country potatoes and fresh fruit

Egg White Frittata

tomatoes, artichokes, wilted spinach & parmesan baked in a soufflé, served with fresh fruit
(calories 190, fat 4-1/2 g, sat fat 2-1/2 g, protein 19 g)

Breakfast Burrito

scrambled eggs, chopped ham, cheddar, sour cream & pico de gallo
Bob's Breakfast Croissant
choice of breakfast meat, scrambled egg and cheddar

Griddle Cakes

served with real maple syrup and your choice of one breakfast meat
regular stack (3)
short stack (2)

add fresh seasonal berries & whipped cream

Bob's Croissant

fresh squeezed orange juice or virgin bloody mary
fresh oj mimosa or regular bloody mary

we accept visa, mastercard, american express & discover, no personal checks please

consuming raw or partially cooked meat, seafood, poultry or eggs may cause food borne illness

All prices and menu items subject to change anytime.

Automatic 18% gratuity for tables of 8 or more.

RESTAURANT HOURS

Breakfast hours

Saturday 8 am - 11 am • Sunday 8 am - 12:30 pm

Lunch hours

Tuesday - Sunday 11 am - 3 pm

Dinner hours

Tuesday, Wednesday, Thursday 5 pm - 8 pm • Friday & Saturday 5 pm - 9 pm • Sunday 5 pm - 8 pm

Bar Menu: Tuesday through Sunday 3 pm to 9 pm (open until 10 pm on Fridays and Saturdays)

THE GRILL

12765 MUELLER DRIVE

Restaurant 209.962.8638

19th Hole Lounge 209.962.8636

THE GRILL DINNER MENU

ALL PRICES AND MENU ITEMS SUBJECT TO CHANGE ANY TIME. AUTOMATIC 18% GRATUITY FOR TABLES OF 8 OR MORE.

WE RESERVE THE RIGHT TO REFUSE BUSINESS TO ANYONE.

In an effort to promote heart healthy foods we now prepare our food with ZERO TRANS FAT ACID Shortening.

Call for reservations.

Special Events at The Grill —

Find out what is happening at The Grill at www.pinemountainlake.com under "upcoming events"

19th Hole Lounge —

hours for the bar call 962-8636
Monday – Friday 11am to close
Saturday - Sunday - 8 am to close

Times subject to change without notice dependent on weather and patronage.

INDEPENDENCE DAY

Live entertainment

at the 19th Hole Lounge —

Enjoy the band "DYNA-MO," superb live entertainment in the 19th Hole Lounge Saturday, July 3rd, 8 p.m. to midnight

Monday Night Football at the 19th Hole Lounge Beginning in September —

19th Hole Lounge (209) 962-8636
MONDAYS Sponsored by the R.O.O.F.B.B.

Enjoy a large variety of food and drink specials during each Monday Night Football game and the Super Bowl!

APPETIZERS

Spinach Dip

served with crispy flatbread chips

Skewered Tequila Shrimp

seared & brushed with reposado

Crab Cakes

four house-made crab cakes served with seasonal greens, tomato relish & lemon aioli

Lollipop Lamb

grilled new zealand rack chops finished with a zinfandel demi glaze

Bay Shrimp Cocktail

chilled bay shrimp, house-made cocktail sauce

Grilled White Flatbread

alfredo sauce, grilled chicken & shaved parmesan

Grilled Margherita Flatbread

heirloom tomatoes, basil & mozzarella with fresh marinara

Add a salad for a great light meal!

FEATURES

(served with choice of soup or salad)

Misted Greens

with Orange Muscat Vinaigrette

mixed field greens lightly misted with house-made fat free dressing, tossed with seasonal veggie
(calories 95, total fat 1.5 g, sat fat .25 g, protein 5 g)

Grilled Pork Loin Chops

two bone-in chops, grilled to order and brushed with spicy honey apple glaze, served with choice of two sides

Mahi Mahi with Fruit Salsa

roasted vegetables and yukon gold potatoes
(calories 295, total fat 2 g, sat fat .5 g, protein 37 g)

Grilled Blue Cheese New York Steak

center cut new york finished with blue cheese, bacon and scallions, served on a sizzling platter, choice of two sides

Grilled Gulf Shrimp Pasta

linguini tossed in lobster sauce with mexican gulf shrimp, baby bella mushrooms and smoked applewood bacon

Prime Rib

dry rubbed & slow roasted in our special ovens, au jus, choice of two sides
chef's cut and regular cut available

SMALL PLATES

(served with choice of soup or salad)

Grilled Top Sirloin

center cut and rubbed with house blend seasoning seared on the grill, topped with straw onions and served with choice of two sides

Crispy Shrimp Tacos

pico de gallo, cilantro, avocado, spicy "crema" and seasonal greens served with white corn relish & field greens

Grilled Chicken on Nine Grain

with roasted red peppers, avocado, spanish onions and a side of chipotle ranch

Shrimp Scampi

pan seared prawns finished with lemon cream sauce & tomato relish, served with choice of two sides

Slow Roasted Chicken Quarter

hand rubbed with our own seasoning blend and slow roasted in our special ovens, 1/4 chicken served semi-boneless, served with a choice of two sides
(we only cook a few every day so when they're gone we apologize)

Pan-Seared Salmon

fresh filet quickly seared to seal in the natural flavors, finished with a wasabi orange cream sauce, served with a choice of two sides

Slow Roasted Chicken Pasta

pulled chicken, tomatoes, seasonal vegetable, mushrooms and scallions finished with parmesan and served with garlic bread

SALADS

Great as an appetizer, alone or for two!

House Salad

seasonal field greens, tomatoes & garlic croûtons with your choice of dressing

House Caesar

chilled romaine hearts, classic caesar dressing, croûtons & parmesan

Black & Blue

seared top sirloin steak on a bed of mixed field greens with candied walnuts & blue cheese, tossed lightly with balsamic vinaigrette

Chipotle Ranch Chicken Salad

grilled chicken, crisp romaine, grilled white corn, pico de gallo, avocado, shredded jack and crispy tortilla strips tossed with our spicy chipotle ranch dressing

Chicken Caesar

grilled chicken & crisp romaine tossed with classic caesar dressing, garlic croûtons & parmesan cheese

West Coast Louie

fresh crab, oregon bay shrimp and gulf prawns over a bed of crisp greens with avocado, egg, tomato, cucumber and traditional louie dressing

THE GRILL BURGER

1/2 pound of 100% fresh ground angus chuck lightly seasoned with kosher salt & black pepper served with the traditional lettuce, tomato pickle & onion on a locally baked soft roll or onion roll grilled to order over an open flame & served with french fries

add aged cheddar, blue cheese, american, swiss, caramelized onions, mushrooms, applewood bacon or avocado

try it bunless with a small caesar salad

Sliders, three mini burgers with chipotle ranch, cornichons, lettuce & tomato

Boca Burger, not as much fun but healthier, served on nine grain

FAVORITES

(served with soup or salad and choice of 2 sides)

Chicken Parmesan

crispy chicken breast with marinara, mozzarella & parmesan, served with garlic bread

Grilled Salmon

lightly seared over an open flame, finished with seasonal fruit salsa

Slow Roasted Chicken

one half chicken hand rubbed with our own seasoning blend and slow roasted in our special ovens, served semi-boneless
(we only cook a few every day so when they're gone we apologize)

Shrimp Scampi

pan seared prawns finished with lemon cream sauce & tomato relish

Penné Gorgonzola

creamy garlic & cheese sauce tossed with artichoke hearts, sun dried tomatoes and mushrooms

Rack of Lamb

six bone rack rubbed with our house-made spice blend and finished with a zinfandel demi glaze

SIDES

white corn relish, sautéed veggies, garlic mashed potatoes, baked potato, roasted yukon gold potatoes, armenian rice pilaf, or penne w/marinara or alfredo

garlic fries are available as an upgrade to any meal

For those watching their SALT intake we offer Barbara J's Organic SALT-FREE seasoning blends

ACTIVITIES

Activities information 209.962.8600

ACTIVITIES

Aerobics & Sculpting Exercise by Video
Reach your fitness goals! Enjoy a full body workout for all fitness levels! Join us at 9 am on Mondays, Wednesdays & Fridays at the Lake Lodge to be led by a variety of videos featuring certified fitness instructors. Bring an exercise mat and wear comfortable (loose) clothing. No charge to participate! Barbara Elliott (209) 962-6457 or Michelene (209) 962-4467

Computer Users Group

The C.U.G. has monthly meetings with guest speakers. Topics include hardware, software and the Internet. For information on dates and times call Frank Perry at (209) 962-0728.

PML Cooking Classes by Paula Martell and Tom Knoth

In these 1-1/2 hour interactive cooking demonstrations, you'll discover recipes created for the home cook, get step-by-step instructions for delicious fool-proof dishes, watch essential culinary techniques in action, and learn some helpful tricks and tools of the trade. Please come with an appetite, as all classes include sampling of the delectable dishes that have been prepared! Fee is \$10 and includes food samples. Classes are from 6:30 - 8:00 pm at the PML Lake Lodge. To RSVP, contact Tom Knoth (209) 962-5838 or TomKnoth@yahoo.com

Sierra Club Hike of the Week

Summer months begin mid May meet Thursdays, 8 am. Winter months meet Thursdays, 9 am. Midweek hikers in the Groveland area get to know the area better with a short informational hike on a different trail each Thursday (weather permitting). Meet at Groveland's Mary Laveroni Park for an approximate 6-mile hike. Bring a jacket, water, sunscreen and a snack in a daypack and wear hiking boots. The hike is generally followed by a no-host lunch at a local restaurant. Please call Frank Oyung for further details (209) 962-7585.

Duplicate Bridge Tournaments

Held at the Lake Lodge. 2nd and 4th Thursdays at 6:30 pm, contact Bobbie Vandenberg at (209) 962-6965.

Pool Summer Hours - May 15 to September 6

Pool is open seven days a week during the summer season, weather/pool temps permitting.
Open to property owners & guests 10 am - 9 pm
Open to renters and guests 12 noon - 9 pm

Swim Hours - Fall

Sept 7th to Sept 19th 10:30 am to 7 pm (weather permitting)
Sept 20th to Oct 31st Noon to 5 pm (weather permitting)

Pool Socials - (209) 962-8634

Fun family entertainment! Including music and BBQ. Selected Saturdays from 6 pm to 8 pm. See swimming pool section for details.

Water Aerobics Classes - Summer Hours

2 sessions available - no charge for exercising classes. Instructed by selected audiotapes. Monday - Friday at 8 am and 9 am

Horseshoe Pitching

Meet at Pleasant View pits at 1 pm every Monday and Thursday. Men and women of all skill levels are welcome! Horseshoes provided.

Lake Taxi Rides (Seasonal)

10 am to 6 pm daily May 15 - September 6, 2010. Contact the Marina Store at (209) 962-8631 for details.

Monday Bridge at**The Grill at Pine Mountain Lake**

All bridge player's welcome! For more information contact Bill Mingus at (209) 962-4240

Groveland Seroptimist Club

Meet at The Grill at Pine Mountain Lake! For more information call Amanda Klaahsen (209) 962-5961.

EVENTS

Upcoming Special Events are listed each month in the Calendar of Events section of the PML News and at www.pinemountainlake.com - see "upcoming events"

PML Hit & Giggle**Nine-Hole Golf Tournaments**

Enjoy a fun nine-hole round of golf, a delicious dinner and special prizes. See the PML News for upcoming dates or call the Pro Shop for details (209) 962-8620

PML Flea Markets - 2010

Held at the PML Stables on May 15 and September 11, 2010. Buy or sell your treasures at this very popular event. Sign up early in the PML Administration office or at the Stables the morning of the Flea Market - \$7 per space. Space set-up starts at 7 am. Spaces are "first come first serve" basis on the day of the event. Please bring your own tables, tarps, blankets, etc

Memorial Day Celebration at the Stables -**Sunday, May 30, from 3 - 8pm**

Sponsored by the Groveland Volunteer Firefighter's Association. Includes Tri Tip dinner, beans, salad & bread \$14 Adults \$7 Kids (12 & under) TO GO boxed dinners also available. Emergency Apparatus on display showing specialized equipment. Kid's Activities, trail rides available, 50/50 Raffle, and live music. This year's theme: South County Fair. Fun and Games for all.

Friends of the Lake hosts the annual**Poker Run on the lake at 4:30 pm on**

Sunday, June 13. After a potluck dinner

at the Marina, we board boats and travel around the lake picking up poker cards. Upon returning to the Marina, we play the cards and prizes are awarded for the best and worst hands. Call 962-0428 to reserve your seat. Cost is \$5 per person.

Independence Day Weekend**Celebration at the Stables**

Friday, July 2nd, 5 to 10 pm. Includes BBQ Tri-Tip dinner and live music. \$12 Adults \$7 Kids (under 12) Sponsored by Country Mountain Riders & Pine Mountain Lake Association. Trail rides available. See the PML News for details.

Boat Parade**Saturday, July 3rd**

Sponsored by Friends of the Lake - Don't miss one of the highlights of the summer! Decorate your boat to honor Independence Day or any famous TV show. Sign up at the Marina office and receive your entry number. There is no charge to enter the parade. The parade kicks off at 6:00 pm prior to the fireworks display. Spectators can watch the parade from the Marina, Lake Lodge or Fisherman's Cove. Trophies are awarded for the best decorated boats. Boats of all types are welcome! Call (209) 962-6336 for additional information.

Spectators can watch the parade from any lake beach except Dunn Court Beach where the fireworks display will be setting up and the beach is closed.

Call (209) 962-6336 for additional information.

Independence Day Weekend**Fireworks Celebration**

Don't miss the firework extravaganza set for Saturday, July 3rd. The action starts in the afternoon with live music by ROCKSLIDE, boat parade and as dusk falls over the lake, a fantastic Fireworks Show! Don't miss this event at the Marina.

Don't miss one of the highlights of the summer! The annual Independence Day boat parade takes place at 6 pm on Saturday, July 3, 2010, just a few hours before the fireworks. Participants decorate their boats and form a festive parade around the lake. Trophies are given for the best decorations. Boats of all types welcome! Watch the PML News for details.

Labor Day Country BBQ Celebration at

the PML Stables sponsored by the Southern Tuolumne County Historical Society. OPEN TO THE PUBLIC! The fun starts on Sunday, September 5th, from 2-7 pm. Includes BBQ Chicken and Beef dinner with all the fixin's, and live music by "Chains Required". Free Admission. Live music, car show, fly-over,

Children's Activities & Events**Little Wrangler Camp**

Stables (209) 962-8667. Supervised by PML's Stables staff this camp is the perfect way to introduce your child to the world of horses and the life of a "cowpoke" all in a friendly, safe environment. Camps consist of horse and stables care, fun and game activities and lunch. Camps run every Tuesday and Thursday (ages 7 -13) 9 am to 1 pm, June, July and August. Cost is \$35 per child, per 1-day camp. Limited to 10 students per 1-day camp. Be sure to sign up early!

EVENTS**Fishing Days for Kids**

June 19, July 17 and August 14, 2010 using your own gear, kids ages 7-15 sign up at the Marina for a supervised fishing boat trip from 6:30 am to 9:30 am. Maximum boatload is 6 kids for this learning experience. Learn fishing tips and safety while possibly catching one of our large fish, trout/bass, by Captain Ernie.

Free Fishing Days for Kids of All Ages!
For 2010, California's free fishing days are July 4th and September 6th. While all fishing regulations, such as bag and size limits, gear restrictions, fishing hours and stream closures

remain in effect; there are two Saturdays each year where anyone can fish without purchasing a fishing license.

Log on here for additional information on Free Fishing Days in the San Francisco Bay area. <http://www.dfg.ca.gov/>

Fishing Derby for Kid's of All Ages

Be sure to sign up at the Marina for the Fishing Derby. There is a \$5 entry fee and it runs from June 1 through Aug. 29, 2010. Prize for heaviest fish caught. You must sign up before catching your fish to qualify. Call Marina Store at (209) 962-8631 for details.

Swim Lessons at the Pool 962-8634

See swimming pool section for details.

Jr. Golf Clinics - 962-8620

See golf section for details

Holiday Activities at the Marina**Sand Castle Contest**

Sunday, July 4, from 9:30 to 11:30 am. Fun and Games from 1 to 3 pm. Prizes awarded.

Family Fun and Games at the Marina Labor Day Weekend**Sand Castle Contest**

Saturday, September 4th, 9:30 am to 11:30 am.

Fun & Games Sunday, September 5th from 1 pm to 3 pm.

Friends of the Lake hosts the "Music at the Marina" at 5:00 pm on Sunday, August 8. The evening starts with a potluck dinner at the west end of the Marina beach. Popular folk singers Chris Miller and Lori Brandon will entertain from 6:00-8:00 pm. Both Chris and Lori are former New Christie Minstrels and their music is a wonderful mixture of favorite folk songs and old-time rock and roll. Come sing-a-long and enjoy a warm summer evening on the Marina lawn. No charge, open to all. Bring your place setting and a dish to share.

NOTICE!! All events, dates, times, rules and prices subject to change without notice. Watch for monthly updates in the PML News.

Get the PML News online at www.pinemountainlake.com/pmlnews.html.

historical displays, photos, raffles, horse soccer, and a bake sale! Kids' activities include a bounce house, games, face-painting, and more! Bring the kids and the neighbors and join in a day of FUN, FOOD and DANCING! \$12 Adult, \$7 under 12

BBQ tickets can be purchased before the event at Yosemite Bank, at the Groveland Gateway Museum AND on-line thru Pay-Pal!

For updated info check the PML News each month or the PML News online at www.pinemountainlake.com/pmlnews.html.

Friends of the Lake presents the annual "Lake Swim" with an open lake swim from Dunn Court to the Marina at 3:00 pm, Sunday, July 11. You can race or just swim for fun; proficient swimmers only. All swimmers will register and sign a liability waiver at Dunn Court at 2:45 pm. Watch the PML News and mailbox flyers for details.

TENNIS
Reservations 209.962.8615

Court Locations

Pine Mountain Lake has six tennis courts, two by the Country Club (5 & 6) and four courts (1, 2, 3 & 4) at the Rock Canyon Way and Pine Mountain Drive Tennis Center. Courts 3, 4, 5, & 6 have lights until 10:00 pm. Night play under the lights is permitted until 10 pm. Lights go off automatically at 10 pm and cannot be turned back on.

DRESS CODE

Tennis shoes approved for tennis court use are mandatory.

MEN

Collared shirts recommended but not required, no blue jeans or blue jean shorts or swim trunks.

WOMEN

No blue jeans, blue jean shorts, short shorts or swim suits.

RESERVATIONS

For advance reservations call PML Department of Safety (209) 962-8615, 24 hours a day, seven days a week. Reservations may be made up to seven days in advance but cannot be made on the day of play (you must sign up at the courts). Reservations and sign-ups are limited to one hour for singles, two hours for doubles, per day. Sign-up sheets will be posted daily at each court location and will show reserved time. All players must be listed on the sign-up sheet before play begins. Reservations will be forfeited if players are more than ten minutes late.

GENERAL RULES

All players must have a valid tennis pass. Non-marking tennis shoes only. Appropriate tennis attire must be worn at all times. No food or drink, other than water, inside the courts. No glass containers allowed. Courts are limited to tennis play only.



PML Racquet Club Priority Times

(except holidays)

SUMMER

Monday Drop-in 7 am to 11 am Courts 1
Tuesday Social 5 pm to Dark Courts 3 & 4
Thursday Men's Day 8 am to 10 am Courts 1-5

WINTER

Monday Drop-in 9 am to 11 am Court 1
Thursday Men's Day 9 am to 11 am Courts 1 - 5

PML Racquet Club Tennis Schedule Of Events

For information contact the Racquet Club President, Al Rodriguez at (209) 962-6457.

Tennis Center Courts 1 – 4

Located on Rock Canyon Way & Pine Mountain Drive.

Tuesday, May 18

Third Tennis Social, Courts 1, 2, 3, and 4, 9:00 A.M.

Tuesday, June 8

Second Quarterly Meeting BBQ Pot Luck @ Courts 3 and 4, 5:00 P.M.

June-August

Tuesday Night BBQ social w/tennis play, 5:00 P.M.

Saturday, June 19

Davis Cup

Tuesday, August 31

Third Quarterly Meeting BBQ Pot Luck @ Courts 3 and 4, 5:00 P.M.

Saturday, September 18

Mixed Doubles Championship, Courts 1, 2, 3 and 4, 9:00 A.M.

Saturday, October 2

Men's & Women's Doubles Championship, Courts 1, 2, 3 and 4, 9:00 A.M.

Saturday, December 4

PML Racquet Club Christmas dinner and Fourth Quarterly Meeting, 5:00 P.M.
TBA

Tuesday Nights

BBQ Socials—beginning March 2nd. Call Al Rodriguez (209) 962-6457, Club President for more information.

(Non-Racquet Club Members welcome!)

Tennis Fees

All players must display their valid tennis pass while playing. You may purchase your annual tennis pass at the Association Office. Daily and monthly passes are on sale at the Main Gate Department of Safety office only. Tennis passes are not available at the tennis courts.

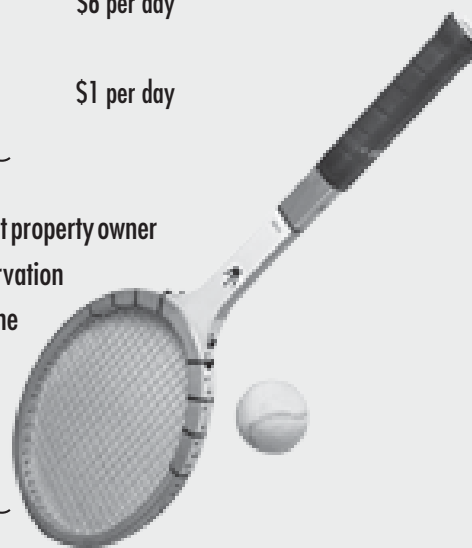
Property Owner 2010

Annual single rate	\$112 per year
(Includes members' children or grandchildren through age 18)	
Monthly rate	\$34 per month
Daily rate	\$6 per day
Daily rate for property owners' Minor dependents thru age 18	\$1 per day

Property owners may invite guests to play at property owner rates. Property owner must make the reservation for their guests either in person or over the phone with a PMLA PIN number in order to obtain this rate for their guest.

Guest/Renter

Long-Term Annual Individual rate	\$152 per year
Monthly rate	\$46 per month
Daily rate	\$16 per day
Daily rate (Under 18 years)	\$5 per day



PINE MOUNTAIN LAKE GOLF COURSE
Open 7 Days A Week

Golf Shop 209.962.8620
 Summer Hours 7am-7pm
 Winter Hours 8 Am-5 Pm



Pine Mountain Lake Golf Course, designed by William F. Bell, has been rated "4 1/2 Best Places to Play" by Golf Digest magazine and is open for play year-round. Pine Mountain Lake Golf Course is available for tournaments and public play and is always in excellent condition. The challenging 18-hole, 6,382 yard, par 70 course offers everything a golfer, beginner or expert, could want from a round of golf: beautiful views of Yosemite National Park, a classic park-like setting, a fair but challenging layout and enough trees to make you wish you had a chainsaw as your 14th club!

El Capitan Tees: 6,382 Yards - Glacier Point Tees: 6,125 Yards - Half Dome Tees: 5,733 Yards - Cathedral Tees: 5,021 Yards

The Golf Course is for golf ONLY please!
No games, walking, bike riding or dog walking on the golf course.

TEE TIME RESERVATIONS - 209.962.8620

We take Tee Time Reservations starting at 8 am January 1st thru April 4th; starting at 7am April 5th thru November 7th.

PROPERTY OWNERS can reserve tee times up to 14 days in advance, beginning at 7 am, April 6th through November 8th. Tee time reservations on major holiday weekends (Memorial Day, Independence Day and Labor Day) are taken for all days of the weekend 14 days in advance. Reservations are limited to one (1) tee time per day during the major holiday weekends. Property Owners may request one (1) additional tee time 10 days in advance.

Special Note: A Property Owner is defined as someone who is listed on the deed of the property, and their dependants under the age of 18. Any one that is not specifically listed on the deed is not considered to be a Property Owner and is therefore subject to non-property owner rates. When checking in at the Pro Shop to play golf and we ask your name it is to ensure that you will be paying for golf at a rate that you, as a Property Owner, are entitled to pay.



Pine Mountain Lake Golf Course
Open 7 Days A Week



Clinics & Lessons

JUNIOR GOLF CLINICS

June 23, 24, 25 **Clinic Dates:** **July 7, 8, 9** **August 4, 5, 6**

Beginning and Intermediate clinics for kids ages 7-17
 \$30 per child for each 3 day clinic (Maximum of \$70 per family per clinic)

Beginning Clinic

9:00 am – 10:30 am each day

Intermediate Clinic

11:00 am – 12:30 pm each day

Class sizes are limited –

please sign up in advance at the PML Golf Shop or call 209.962.8620 for applications.



GOLF LESSONS & CLUB FITTING
Private & Group Lessons Available

FOR More information call 209-962-8620

GUESTS In order to obtain the Guest rate the reservation must be made by a Property Owner either in person or by phone. Property Owners may make tee times for their Guests two (2) weeks in advance.

PUBLIC can make reservations 10 days in advance, beginning at 7 am, April 6th through November 8th.

DRESS CODE

No Blue Jeans or Blue Jean shorts are allowed on the Golf Course for players or riders.

MEN Collared shirts are required. No Blue Jeans or Blue Jean shorts, swim trunks or sweatpants.

WOMEN T-Shirts are allowed. Sleeveless blouses must have 4" straps. No tank tops or spaghetti strap tops; No Blue Jeans or Blue Jean shorts, short shorts or swim suits.

DRIVING RANGE

Tokens for the driving range ball machine are available at the PML Golf Shop or the Snack Shack. Tokens are \$3 each or 4 for \$10. One token = 25-30 balls. Blue Jeans and T-Shirts are allowed while using the driving range.

MEMBERSHIPS and BENEFITS

Annual Golf Memberships, Golf Club Storage and Lockers are available to Pine Mountain Lake Property Owners. Please contact the Golf Shop at 209.962.8620 for more information.

PML GOLF COURSE SNACK SHACK
 Snack Shack 209.962.5058

PML GOLF COURSE SNACK SHACK

Come enjoy lunch at the PML Snack Shack at the Golf Course! We are located at the Golf Course Driving Range so come and lunch with us in the shade of the beautiful oaks and pines and watch the golfers on the golf course and driving range.

Snack Shack Menu

- Birdie dog-mmmm, good hot doggy
- Eagle hamburger-singles & doubles with cheese
- Polish dog — spicy and just right
- Fresh sandwiches-turkey, tuna, ham, egg salad & submarine
- Box lunch — hot dog, polish dog or fresh sandwich w/chips, dessert & soft drink — add a cookie, gatorade, beer or large soda for just a little bit more \$
- Soup du jour & chili-chili, chicken w/wild rice, clam chowder & many more
- Snack items — chips, candy bars, boiled eggs, energy bars, cookies & fruit
- Drinks — bottled water, Pepsi, Diet Pepsi, Sierra Mist, diet root beer & Dr. Pepper; Gatorade, Sobe & Amp, lemonade, iced tea
- Beer — Budweiser, Miller, Coors, Heineken, Tecate-singles & 6 packs
- Liquor — mini liquor, well drinks, bloody mary, vodka or gin & tonic, brandy & coffee, brandy & hot cocoa, schnapps & hot cocoa, Bailey's Irish Cream
- Breakfast — breakfast burrito, danish, muffins, coffee, tea, hot cocoa



THE GOLF SHOP
 AT THE PINE MOUNTAIN LAKE

WE PROUDLY OFFER
 Ahead • Fairway Golf • Kate Lord • Antigua • Titleist
 Cobra • FootJoy • Nike • US Kids Golf

SUMMER HOURS
7 AM – 7 PM

We carry a large selection of PML Logo items. Swing into the Golf Shop for a full range of golf equipment and apparel!

WINTER HOURS
8 AM – 5 PM

We ID. You must be 21 years old with proof of age to purchase alcohol.



TWO GUYS PIZZA PIES

- Pizza
- Subs
- Calzones
- Salad Bar
- Pasta

WE DELIVER!

Call Ahead for FAST service!
(209) 962-4897

18955 Ferretti Rd.
Groveland, CA 95321
1/4 mile off Hwy 120

Hours:
 Sun - Th 11 - 9
 Fri - Sat 11 - 10

CAMPGROUND
13500 ROCKY POINT DRIVE
 Department of Safety 209.962.8615
 campground@pinemountainlake.com

**Campground • Self-serve
 RV & Tent • Camping**

The campground facility is operated by Pine Mountain Lake. Sites are available for PML property owners, guests, and the public. The campground is located off of Ferretti Road, between Mueller Drive and Cottonwood Street, and is open seven days a week. Stays limited to 14 days within any 31-day period.

FACILITIES

- 13 campsites, each with cooking fireplaces and picnic bench
- 10 RV hook-up sites, each with power and water (dump site on location, contact the Main Gate Department of Safety at (209) 962-8615 for access)
- 2 restrooms, each with running water, one with hot showers
- Horseshoe pits and hiking trails (Bring your own horseshoes)
- Volleyball Court (Bring your own volleyball)

RESERVATIONS

Reservations only accepted two weeks prior to Memorial Day through Labor Day. Reservations should be made in advance by writing to:

PMLA Department of Safety
 19228 Pine Mountain Drive
 Groveland CA. 95321

Please indicate

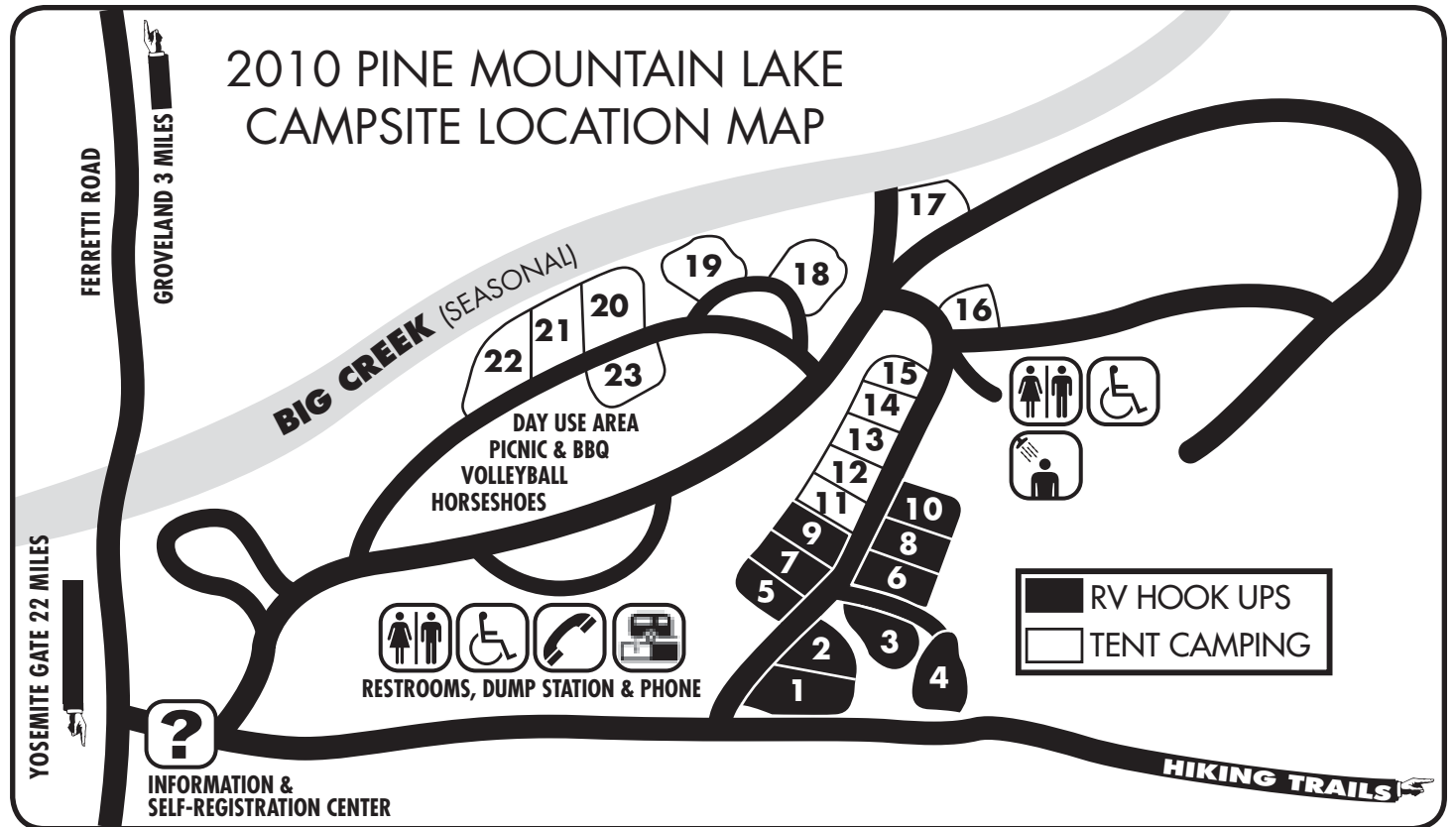
- (1) Name and Address,
- (2) Unit and Lot number (if applicable),
- (3) Date of arrival and departure,
- (4) Number of people and,
- (5) Size of vehicle and/or tent.

If you wish to make a reservation, you must pay in advance. Credit cards accepted. Maximum campsite stay is 14 days. *You must cancel your reservations 48 hours in advance to receive a refund.*

PUBLIC USE

- The Campground is open to the public seven days a week with first priority to property owners and guests of property owners.
- Additional fee for use of Pine Mountain Lake amenities. See the Main Gate Department of Safety for details.
- All PMLA rules and regulations must be observed.
- Stay shall be limited to 14 days within any 31 day period.

Campground pay phone number (209) 962-8931. Please dial *81 to reach the main gate.



Campground Fees

Regular space

Property Owners:

Tent	\$13 per night
Tent	\$57 per week
Tent	\$226 per month

Guests and Public:

Tent	\$17 per night
Tent	\$95 per week

Additional camper charge (after 4 per site)

\$4 per person

Non-camper dump station use

\$12 per use

RV Hook-up

RV	\$19 per night
RV	\$100 per week
RV	\$375 per month

RV	\$27 per night
RV	\$152 per week



Rules & regulations

- Additional charge for more than four (4) persons per space.
- DOGS ARE TO BE KEPT ON LEASHES. No vicious or noisy animals will be tolerated.
- Except to enter and exit only, motorcycles and other all terrain type motor vehicles are prohibited in the campgrounds and on trails.
- Check-in is 11 AM; check-out is 10 AM. Quiet time BEGINS at 10 PM.
- All generators are specifically prohibited.
- GROUND FIRES ARE PROHIBITED. Fires must be confined to designated barbecue pits. Please put out your barbecue fire before leaving.
- Electric cords and water hoses may never be connected to bathrooms.
- No washing of dishes in bathroom sinks.
- Use dumpsters for your trash.
- Please do not put your cigarette butts out on the ground.
- Fireworks are prohibited.
- Hunting is illegal in Pine Mountain Lake. Loaded firearms are prohibited.
- PLEASE KEEP CAMPSITES NEAT AND CLEAN. Check prior to vacating.
- Long term campground use for property owners building a home only. (Plans must be submitted and approved by the E.C.C.)
- PMLA is not responsible for loss or damage of camper property.
- Non-property owner boats are prohibited on Pine Mountain Lake.
- For emergencies, please dial 911.

PINE MOUNTAIN LAKE REALTY
An Agent Owned Company



When Experience Counts ~ You can WIN with LYNN!



Lynn Bonander, GRI
 Owner / REALTOR®
 Office 209-962-7156 / Cell 484-7156
 lynnb@goldrush.com / www.pmlr.com
 DRE#0068485

Serving the Area Since 1978!
 18919 Main St. Ste. A
 @ Ferretti & Hwy 120

PINE MOUNTAIN LAKE REALTY
An Agent Owned Company



SEE 'VAL' FOR VALUE!

32+ Years Experience in Pine Mountain Lake & Groveland



Val Bruce
 Owner / Broker Assoc.
 209-962-7156 / Cell 768-7368
 val@pmlr.com
 DRE#00578336

www.pmlr.com
 18919 Main St. Ste. A
 @ Ferretti & Hwy 120



Pine Mountain Lake FLEA MARKET

at the PML STABLES at 13309 Clifton Way

Saturday, May 15 & September 11, 2010

- Spaces are first come first serve on the day of the event • Please bring your own tables, tarps, blankets, etc.
 - Space set-up starts at 7am • Space fee is \$7 per space
- pay in advance at PML Admin Office or at the Stables the day of the event .

Tenaya 8th Grade Graduation Fund-raiser Selling Coffee, Donuts and Hot Dogs

ANNUAL
INDEPENDENCE DAY BBQ
Friday, July 2nd

Pine Mountain Lake Equestrian Center
 Presented by the
 Country Mountain Riders and Pine Mountain Lake Association

Events
 Dinner ★ 5-8 pm
 Color Guard/horse event
 Live Band and 50/50 raffle

BBQ Tri-tip, green salad, Texas beans, garlic bread & dessert
 Hot dogs for the little wranglers

\$12 Adults ★ \$7 Children (Under 12)
 Beverages for purchase. Tickets at the gate.



BOAT PARADE **LIVE MUSIC** **FREE BOTTLES**
FIREWORKS CRUISE

2010
 Pine Mountain Lake
FIREWORKS CELEBRATION
 Saturday, July 3rd



MAP LEGEND

- Pine Mountain
- Pine Mountain
- Public Access
- Greenbelt
- PML Golf Course
- PML Country Club
- PML Beaches
- Trails
- Card Entry Gate

TIOGA HIGH SCHOOL

PINE MTN. LAKE CAMP GROUND

Trail Parking 9



DAM

PINE MOUNTAIN LAKE

SWIMMING AREA

MARINE & BEACH AREA

UNIT 5B

UNIT 5A

UNIT 1

UNIT 2

UNIT 5

UNIT 1A-4

1B-4

GROVELAND COMMUNITY BASEBALL FIELD "Leon Rose Field"

GROVELAND COMMUNITY SERVICE DISTRICT

PINE MOUNTAIN LAKE ASSOCIATION OFFICE 962-8600

PINE MOUNTAIN LAKE MAIN GATE SECURITY 962-8615

MUSEUM-LIBRARY

MAIN STREET MARKET

TO GROVELAND

TENAYA ELEMENTARY SCHOOL

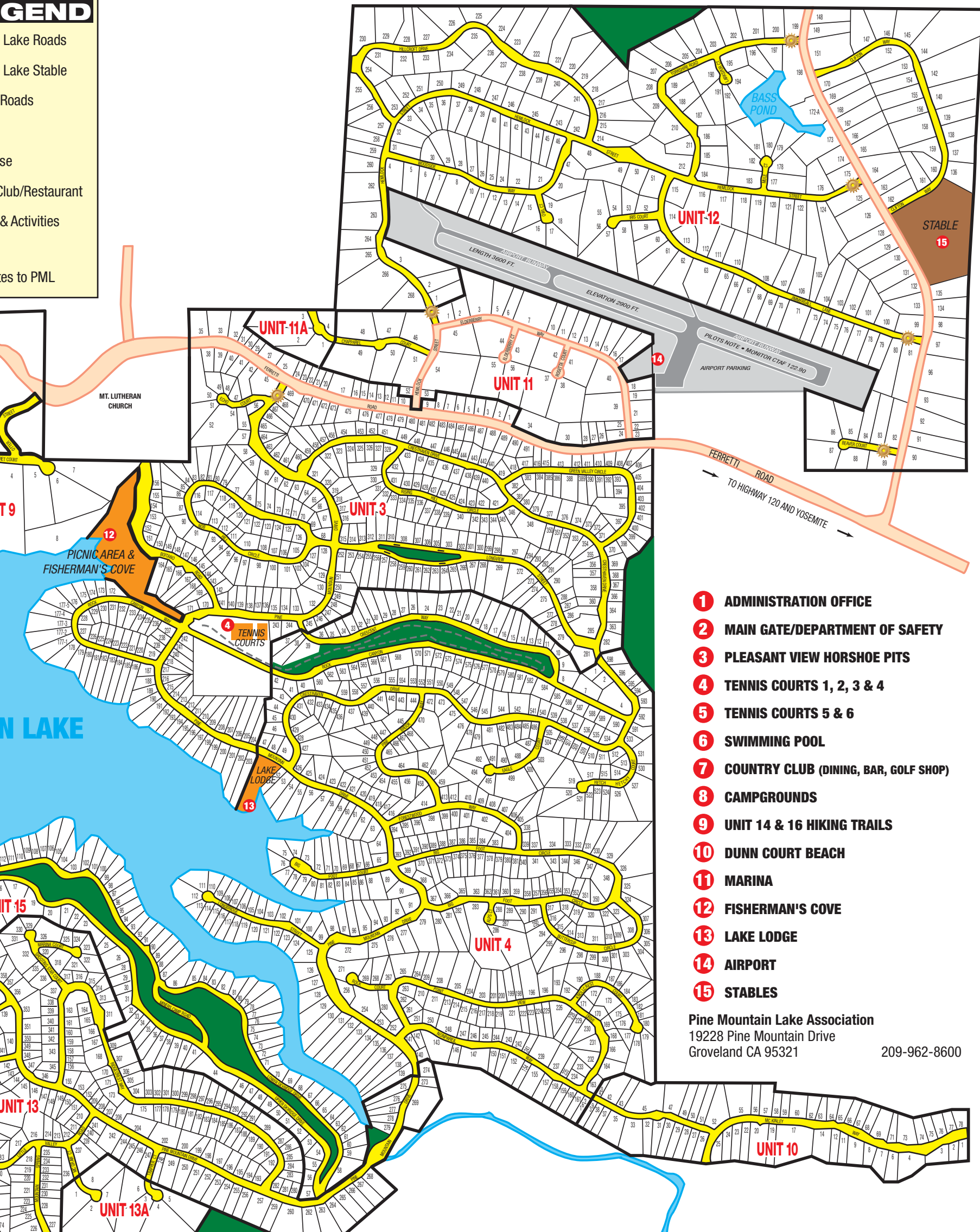
HIGHWAY 120 TO YOSEMITE



PINE MOUNTAIN LAKE MAP

LEGEND

- Lake Roads
- Lake Stable
- Roads
- se
- Club/Restaurant
- & Activities
- es to PML



- 1 ADMINISTRATION OFFICE**
- 2 MAIN GATE/DEPARTMENT OF SAFETY**
- 3 PLEASANT VIEW HORSHOE PITS**
- 4 TENNIS COURTS 1, 2, 3 & 4**
- 5 TENNIS COURTS 5 & 6**
- 6 SWIMMING POOL**
- 7 COUNTRY CLUB (DINING, BAR, GOLF SHOP)**
- 8 CAMPGROUNDS**
- 9 UNIT 14 & 16 HIKING TRAILS**
- 10 DUNN COURT BEACH**
- 11 MARINA**
- 12 FISHERMAN'S COVE**
- 13 LAKE LODGE**
- 14 AIRPORT**
- 15 STABLES**

Pine Mountain Lake Association
 19228 Pine Mountain Drive
 Groveland CA 95321 209-962-8600

AROUND PINE MOUNTAIN LAKE MARINA EVENTS & ACTIVITIES

WATER TAXI

This is the perfect solution to avoid the crowded parking lot at the Marina. Park your car at Fisherman's Cove, Dunn Court Beach or the Lake Lodge and ride one of our two CUSTOM BUILT, 18 PASSENGER WATER TAXIS! (Dunn Court Beach will be closed Saturday, July 3rd for the fireworks set up.)

Rates

Rates on Saturday, July 3rd are \$6 per adult and \$1 per child (8 yrs & under) includes wristband - if you already have a wristband you ride free. Wristbands are not day passes. Day passes not available on holidays or holiday weekends. Other than holidays or holiday weekends unlimited day passes run \$3 per adult and \$2 per child (8 years & under).

Operating Schedule

Available seven days a week, 10 am to 6 pm, during the summer months, weather permitting. Please be at the dock prior to scheduled pick up time. (Schedule subject to change without notice.)

Pickup Time	Location
On the hour	Marina
15 minutes after the hour	Lake Lodge
30 minutes after the hour	Fisherman's Cove
45 minutes after the hour	Dunn Court

Call the Marina Store at (209) 962-8631 for more information.

PML LAKE CRUISES

Sign up for all Lake Cruises at the Marina Store or call (209) 962-8631. Enjoy a relaxing lake cruise on beautiful Pine Mountain Lake. Available everyday! The length of the cruise depends on the type of cruise you take.

LAKE CRUISE RATES

Charter the boat for your own group. Only \$85 per hour. (Maximum capacity is 18 adults.) Includes your choice of soda or sparkling juice and a light snack. Special Cruises available - see the Marina Manager for details.

FIREWORKS CRUISE

See the Independence Day Celebration from the water. Observe the fireworks right from the lake! \$35 per person, any age. Limit of 16 people. Light snacks and beverages will be provided. Pick up

8:30 pm at Lake Lodge dock OR rent the entire boat \$550 per boat.

This year the fireworks will be shown on Saturday, July 3rd, 2010.

WATER TAXI RIDES

Water taxi rides available 10 am to 6 pm daily May 15 - Sept. 6. Contact the Marina Store at (209) 962-8631 for details.

Use the lake taxi to avoid crowded Marina parking.

INDEPENDENCE DAY WEEKEND BOAT PARADE

July 3rd "Boat Parade"

Don't miss this highlight of the summer! Decorate your boat to honor Independence Day or any famous TV show. Sign-up at the Marina office and receive your entry number. There is no charge to enter the parade. The parade kicks off at 6:00 pm prior to the fireworks display. Spectators can watch the parade from the Marina, Lake Lodge or Fisherman's Cove. Trophies are awarded for the best decorated boats. Boats of all types are welcome! Call (209) 962-6336 for additional information.



Marina Events

Holiday Activities at the Marina

Independence Day Weekend

Sand Castle Contest Sunday July 4,
9:30 am to 11:30 am
Fun & Games from 1 pm to 3 pm with prizes awarded.

Labor Day Weekend

Sand Castle Contest Saturday, Sept. 4, 9:30 am – 11:30 am
Family Fun & Games Sunday, Sept 5, 1 pm to 3 pm.

Fishing Days for Kids

June 19, July 17 and August 14
Using their own gear, kids' ages 7-15 sign up at the Marina for a supervised fishing boat trip from 6:30 am to 9:30 am Max. boat load of 6 kids for this learning experience. Learn fishing and safety tips while possibly catching one of our large fish, trout/bass.

Fishing Derby for Kid's of all ages

Derby period from June 1 to August 29, 2010. Prize for the heaviest fish. \$5 entry fee, - you must sign up at the Marina before catching your fish to qualify. Call the Marina Store at (209) 962-8631 for details.

Music at the Marina

Saturday, July 3, 2010
Live music by "ROCKSLIDE" playing from 4:00 pm - 8:30 pm

Friends of the Lake hosts the "Music at the Marina" at 5:00 pm on Sunday, August 8. The evening starts with a potluck dinner at the west end of the Marina beach. Popular folk singers Chris Miller and Lori Brandon will entertain from 6:00-8:00 pm. Both Chris and Lori are former New

Christie Minstrels and their music is a wonderful mixture of favorite folk songs and old-time rock and roll. Come sing-a-long and enjoy a warm summer evening on the Marina lawn. No charge, open to all. Bring your place setting and a dish to share.

Independence Day Fireworks Celebration

Don't miss the fireworks extravaganza Saturday, July 3rd!

Admission July 3rd — adults \$6 children 8 & under \$1 Be sure to watch the PML News for info about the FREE Shuttle Bus to the Marina Beach departing from four different locations.



AROUND PINE MOUNTAIN LAKE MARINA EVENTS & ACTIVITIES

LAKE LODGE 20270 Pine Mountain Dr.

The Lake Lodge is located on Pine Mountain Drive between Cresthaven Drive and Rock Canyon Way. The beach at the Lake Lodge is especially suitable for family groups. Barbecue grills, picnic tables, a large sandy beach, rest rooms, seasonal water taxi service and a large swim area. This amenity does not have sleeping accommodations.

**SWIM AT YOUR OWN RISK.
NO LIFEGUARD ON DUTY!**

Lake Lodge Rental Fees

Usage fee

- \$210 (non-refundable)
- Refundable cleaning deposit \$210 per event
- Refundable Organized Group Cleaning Deposit \$210
- Special event with Outside Catering per meeting \$210 Usage Fee
- *Special events* with "The Grill" at Pine Mountain Lake providing food and service No Usage Fee
- *Regular meeting* - organized PML recognized group No Usage Fee

THE GRILL AT PINE MOUNTAIN LAKE CATERING AT THE LAKE LODGE

Save \$210 on your next special event at the Lake Lodge! Simply allow The Grill at Pine Mountain Lake to plan your special event. The Grill specializes in wedding receptions, banquets and meetings. For more Lake Lodge catering information please call The Grill at PML (209) 962-8638.

Perfect for weddings, birthdays, anniversaries, graduations, business meetings and more!

PARKING RESTRICTIONS

A valid parking permit is required to park in any parking lot within the gated community of Pine Mountain Lake (i.e. Lake Lodge, Dunn Court, Marina, and Fisherman's Cove).

Parking permits

Pine Mountain Lake parking permits are available through the Main Gate Department of Safety or the Administration Office on Pine Mountain Drive for a fee.

Marina parking rules

The use of the Marina parking lot is restricted to property owners only on weekends and holidays. Renters and guests may park at the Marina any other time with a valid parking permit.



All beach parking lot hours are from 6 am to 10 pm. Cars must be removed from all beach location parking lots after hours or they will be subject to towing.

Fisherman's Cove

Located off Pine Mountain Drive on Rock Canyon Drive in Unit 3. A beautiful area for the entire family! Picnic tables, fishing docks, barbecue grills, basketball court, large playground facility, hiking trails, nearby tennis courts, seasonal water taxi service and restrooms.

No swimming is allowed in this area at any time.

Please respect all private property.

Pay telephones

Pay phones are available at each beach location: You can dial *81 to reach the Main Gate from any of these pay phones.

Marina (209) 962-8936

Dunn Court (209) 962-8929

Lake Lodge (209) 962-8933

For a complete list of Pine Mountain Lake phone numbers see page 3.

Dunn Court beach

20022 Dunn Court – Located off of Pleasant View Drive. You will find everything you need for fun in this one spot including picnic tables, barbecues, rest rooms, grass area, a sandy beach, seasonal water taxi service, vending machines, a large swim area and plenty of parking. No lifeguard on duty. Swim at your own risk!

Dunn Court Beach is closed Saturday July 3rd, for the fireworks set up and display. All boats must be relocated/removed from beach the day before the fireworks display.

PINE MOUNTAIN LAKE RIDING STABLES

Join Us for Trail Rides Year-round!

Weather Permitting
Call for Days & Times of Operation
When it's bad weather in the Valley (fog etc.), it's usually sunny and nice in Groveland.
Advance Reservations Required
Open to the Public

Please Call for Guided Trail Ride Rates Or ask about our ride to Tuolumne River

We ask that all riders arrive 15 minutes prior to their riding time
Wear closed-toe shoes
For Reservation or Information Call the Stables

209-962-8667
or email at stables@pinemountainlake.com

13309 Clifton Way • Groveland CA 95321
Directions from Groveland on Highway 120
Turn on Ferretti Road – go 6.0 miles,
Turn on Clements Road – go 0.5 miles,
Turn right on Clifton Way – go 0.0 miles

Children must be 8 years or older & at least 44" in height
(Safety helmet required & supplied)

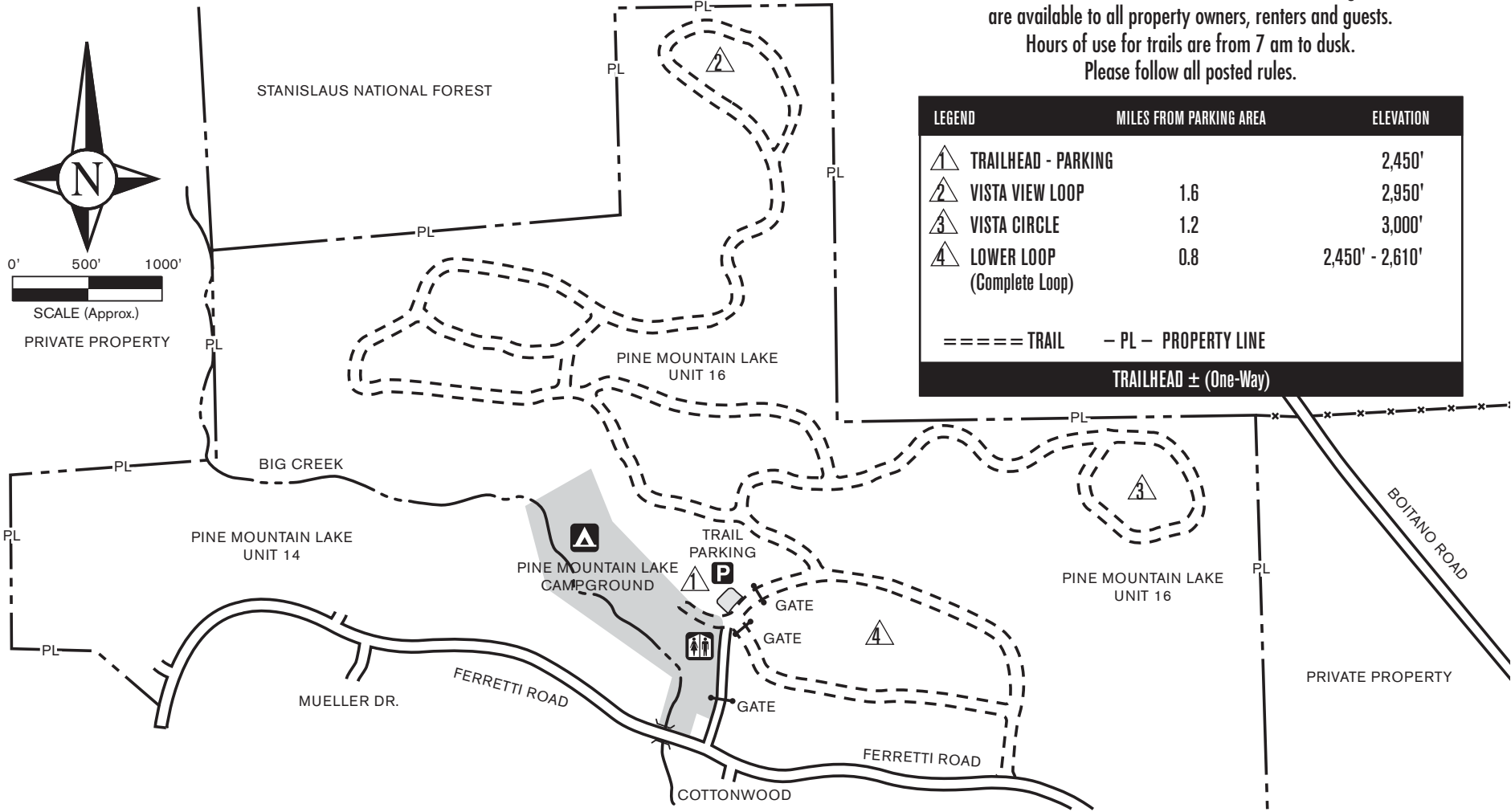
HIKING & WALKING TRAILS

- ### HIKING TRAIL NOTES
1. PEDESTRIAN USE ONLY
(No vehicles of any type)
 2. STAY ON TRAILS
 3. DO NOT LITTER
 4. DOGS ON LEASH ONLY
 5. RESPECT PRIVATE PROPERTY
- NO TRESPASSING
 6. CARRY WATER
 7. NO CAMPFIRES



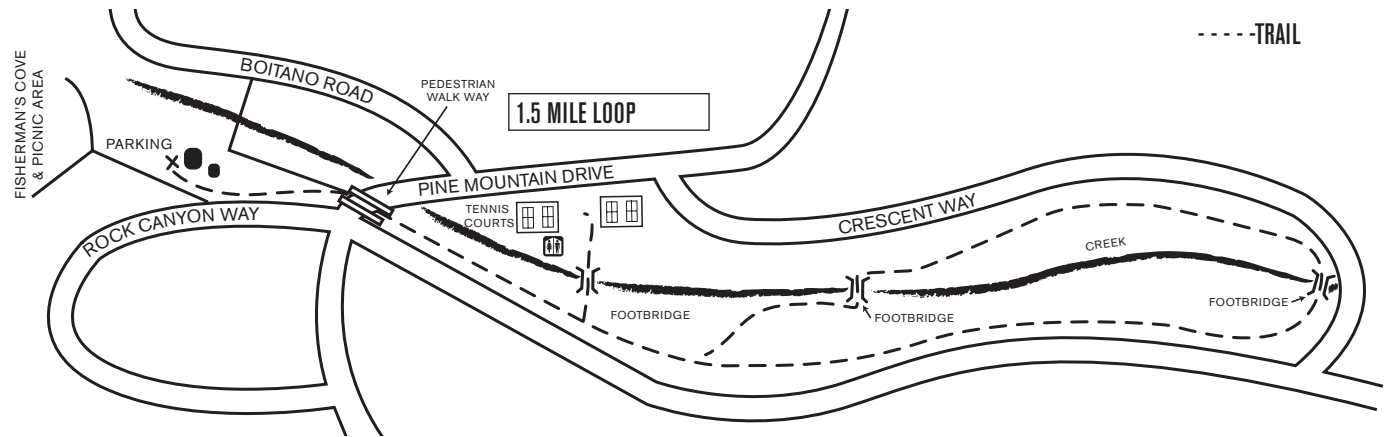
PINE MOUNTAIN LAKE RECREATION & TRAIL AREA (UNITS 14 & 16)
 Units 14 & 16 are home to Pine Mountain Lake's Hiking Trails and are available to all property owners, renters and guests.
 Hours of use for trails are from 7 am to dusk.
 Please follow all posted rules.

LEGEND	MILES FROM PARKING AREA	ELEVATION
▲ TRAILHEAD - PARKING		2,450'
▲ VISTA VIEW LOOP	1.6	2,950'
▲ VISTA CIRCLE	1.2	3,000'
▲ LOWER LOOP (Complete Loop)	0.8	2,450' - 2,610'
TRAILHEAD ± (One-Way)		



GREEN BELT HIKING TRAIL MAP

PINE MOUNTAIN LAKE GREEN BELT HIKING TRAIL (UNITS 3 & 4)
 Trailhead starts at Fisherman's Cove located off Pine Mountain Drive and Rock Canyon Way in Unit 3.



Over 20 interpretive nature signs detailing our native plant life have been installed along the trail!

 Pedestrian use only on this trail.

STABLES - OPEN TO THE PUBLIC
13309 CLIFTON WAY
 Lester Scofield, MANAGER
 209.962.8667
 stables@pinemountainlake.com

Our full service Stables offers trail rides Wednesday through Sundays Spring through Fall and Friday through Sundays during the winter, special excursions, play days, horse shows, children's horse camps, along with total care stalls, corrals and paddock rentals for your horse. A riding arena, exercise ring and a large picnic area and barbecue area are also available. Please call in advance to book trail rides. The Stables are located in Unit 12, on the corner of Clements Road and Clifton Way.

STABLES BOARDING FEES

	Stall	Paddock
Property Owner &	\$235	\$215
Non-Property Owners (full care)		
Overnight fee (per day)	N/A	\$10
Hay Surcharge —	Market Rate	

Equestrian Arena Use

Boarders	N/C
General Special Event Rental per day	\$140
P.A. System per day	\$22

PICNIC AREA

Refundable Cleaning Deposit	\$110
Commercial Activity per event (Fund Raising, Etc.)	\$225
Property Owners & Organized Groups per event	\$85
Public Use fee	\$135
Event Set-up Fee (\$35 per hour - 2 hour minimum)	\$70

OTHER STABLE FEES

Overnight Fee (Paddock Only)	\$10
General Rule Violation Time (minimum)	\$17
General Service Fee per 1/2 hour (minimum)	\$12
Little Wrangler Camp per day per attendee	\$35

FUN FOR EVERYONE!

Our full service Stables is open to the public!

Special Events — PML Stables Open to the Public!
Free Wagon Rides Available at These Events

Memorial Day Celebration Round-up BBQ & Dance at the PML Stables

Sunday, May 30, 2010, 3- 8 pm
 Sponsored by Groveland Volunteer Firefighter's Association.
 Kid's Activities, 50/50 Raffle, Fun Fair Food, Trail Rides available and Live Music. Dinner: Tri-Tip, Beans, Salad, & Bread.
 \$14 Adults \$7 Kids (12 & under)
 Emergency Apparatus on display showing the specialized equipment. The Fire Department is selling water and soda. Pine Mountain Lake Country Club is selling beer and wine. This year's theme: South County Fair

Independence Day Weekend Celebration Round-up at the PML Stables— BBQ & Live Music

Presented by the Country Mountain Riders
 Friday, July 2nd, 5 - 10 pm.
 Dinner Tickets: \$12 Adults \$7 Kids (under 12), Tickets sold at the door.
 BBQ Tri-Tip Dinner, green salad, Texas beans, garlic bread and hot dogs for the Little Wranglers.
 7:00 pm Horse Presentation & Color Guard.

Labor Day Country BBQ & Dance Celebration at the PML Stables

Sponsored by the Southern Tuolumne County Historical Society.
 The fun starts on Sunday, September 5th, 2 - 7 pm.
 \$12 Adults, \$7 Kids Under 12
 BBQ tickets can be purchased before the event at Yosemite Bank, at the Groveland Gateway Museum, AND on-line thru Pay-Pal! Or you can purchase tickets at the door.
 Enjoy BBQ Chicken & Beef dinner with all the fixin's, live music by "Chains Required", Car Show, historical displays, photo, raffles, horse soccer, and a bake sale! Kids' Activities include a bounce house, games, and more! Bring the kids, neighbors and all your friends to join in a day of FUN, FOOD and DANCING!

GUIDED TRAIL RIDES

AVAILABLE Wednesday—Sunday, Spring and Fall
 Safety equipment provided. Must wear closed toe shoes. Ages eight (8) and up and at least 44 inches in height. Advanced reservations required. For reservations or information, call Lester Scofield, Stables Manager (209) 962-8667

WEEKDAYS, WEEKENDS & HOLIDAYS

1 hour	1-1/2 to 2 hour
\$35 per person	\$65 per person

SPECIAL RIVER EXCURSIONS, FISHING TRIPS ETC.

Guided River Ride 4-5 hours \$150.00 per rider. Bring

your own fishing gear and enjoy a leisurely ride to the Tuolumne River. For details and reservations contact the Stables Manager, Lester Scofield (209) 962-8667.

LITTLE WRANGLER CAMP

Supervised by PML's Stables staff, this camp is the perfect way to introduce your child to the world of horses and the life of a "cowpoke" all in a friendly, safe environment. Camps consist of horse and stables care, fun and game activities and lunch. Camps run every Tuesday and Thursday (ages 7-13) 9 am to 1 pm, June 15 through August 19. Cost is \$35 per child, per 1-day camp. Limited to 10 students per 1-day camp. Little Wranglers Camp begins June 15th and ends August 19th.



AIRPORT OWNED & OPERATED BY TUOLUMNE COUNTY

Airport 209.533.5685
 Pay Phone 209.962.8966

The airport is located in Unit 12 on Elderberry Way. Facilities on site include: fueling and parking.

LOCATION: North Latitude 37, 51' 45", West Longitude 120, 10' 40"

ELEVATION: 2,933 feet above sea level.

RUNWAY: 27/09, 3,625 feet long.

Surface is asphalt. Right traffic runway 27.

LIGHTS: Runway and rotating beacon, VASI - Runway 09, PAPI - Runway 27

TAXIWAY: 3,600 feet long, paved.

TIE DOWN AREA: Paved, approximately 54 tie downs, transient tie downs available on west side of ramp south of fuel pumps. Overnight fees: \$4 single; \$8 twin.

UNICOM: 122.9

FROM VORS:

MILES	FREQ.	RADIAL	DME
Modesto VOR (MOD)	114.6	052°	40
Merced area El Nido VOR (HYP)	114.2	001°	40
Stockton area Linden VOR (LIN)	114.8	092°	40

Community Airport Day October 2, 2010



INDEPENDENCE DAY CELEBRATIONS

Independence Day "Goings-on" around Pine Mountain Lake July 3

This year the fireworks will be shown Saturday, July 3rd beginning at dusk!

Don't miss the extravaganza set for Saturday, July 3rd. The action starts in the afternoon at the Marina with a band, boat parade and, as dusk falls over the lake, a fantastic Fireworks Show! Don't miss the events at the Marina.

MARINA Saturday, July 3rd

WRISTBANDS:

On Saturday, July 3rd wristbands **MUST** be worn all day for entry to the Main Marina. Property Owners receive 2 wristbands at no charge. Free wristbands are available through the Administration office only. Wristbands can be purchased at the Administration Office now or at the Marina beginning May 1st. They will be sold all day on Saturday, July 3rd at the Marina and on the Water Taxis. Wristbands are \$6 per person for adults and children 8 and under \$1 each. Get your wristbands now to avoid the last-minute rush!

This year the fireworks will be shown on Saturday, July 3rd beginning at dusk!

WATER TAXI

Here's the perfect solution to avoid the crowded parking lot at the Marina. Park your car at Fisherman's Cove or Lake Lodge and ride one of our two CUSTOM 18 PASSENGER WATER TAXIS! (Dunn Court Beach closed all day July 3rd for the fireworks set up.) 2010 rates on July 3rd are \$6 per adult and \$1 per child (8 yrs & under) includes wristband - if you already have a wristband you ride free. Wristbands are not day passes. Other than Independence Day unlimited day passes run \$3 per adult and \$2 per child (8 yrs & under).

July 3rd the water taxis stop transport service at 7:15 pm to prepare for fireworks cruise. Taxis will resume after the fireworks cruise disembarks, approx. 9:45 to 10 pm.

LIVE MUSIC

ROCKSLIDE plays at the Marina for your entertainment 4 pm to 8:30 pm

BOAT PARADE

Sponsored by Friends of the Lake

July 3rd "Boat Parade"

Don't miss this highlight of the summer! Decorate your boat to honor Independence Day or any famous TV show. Sign-up at the Marina office and receive your entry number. There is no charge to enter the parade. The parade kicks off at 6:00 pm prior to the fireworks display. Spectators can watch the parade from the Marina, Lake Lodge or Fisherman's Cove. Trophies are awarded for the best decorated boats. Boats of all types are welcome! Call (209) 962-6336 for additional information.

FIREWORKS CRUISE

See the Independence Day Celebration from the water. Observe the fireworks right from the lake! \$35 per person, any age! Limited to 16 people. Light snacks and beverages will be provided. OR rent the entire boat for your party at \$550 per boat. These seats fill up very fast so make your reservations early!

Marina closes to vehicle traffic at 4 pm on July 3rd. The Marina parking lot usually fills up by 7 am on July 3rd: Also, be sure your current property owner hanging tag or sticker is visible or your vehicle is subject to towing. You are allowed to drop off people & gear until 4 pm. When applicable, please be sure your Handicap Tags are visible in each vehicle when parked at the Marina.

July 3rd Fireworks Evening

FREE Shuttle Bus

Get to the Marina the EASY way on July 3rd. Two PML Shuttle Buses will depart from four convenient parking locations - round trip approx 30 minutes. Parking will be available at the PML Administration Office parking lot, the Tennis Court parking lot (Mueller Drive only), the Evangelical Free Church, and Tioga High School. Shuttle buses will run from 4 pm - 11 pm.

19th Hole Lounge

Karaoke. Friday, July 2nd 8 pm to Midnight

Live Music with "DYNA-MO"

Saturday, July 3rd 8 pm to Midnight

The Grill at Pine Mountain Lake

OPEN all weekend Saturday, Sunday & Monday!

Make your reservations early by calling 209-962-8638

Saturday, July 3

Breakfast - 8 am to 11 am

Lunch - 11 am to 3 pm

Dinner - 5 pm to 9 pm

Sunday, July 4

Breakfast - 8 am to 12:30 pm

Lunch - 11 am to 3 pm

Dinner - 5 pm to 8 pm

ADMINISTRATION OFFICE

Closed Monday, July 5th

Offices will be open during this week with regular hours Tuesday through Friday 8 am to 4:30 pm.

Groveland Fire Department's 3rd Annual Memorial Weekend Barbecue Sunday, May 30th 3-8 pm Pine Mountain Lake Stables

Dinner: Tri-Tip Beans Salad Bread Dessert

\$14 Adults, \$7 Kids (12 & under)

TO GO boxed dinners also available

Fire Department selling water and soda

PML Country Club selling beer & wine

Emergency Apparatus on Display
showing specialized equipment

This Year's Theme: South County Fair

Fun & Games For All

Live Band & Auction Kid's Activities
50/50 Raffle Fun Fair Food

Groveland Fire Department 209-962-7891 www.grovelandfire.com

Monday, July 5

Breakfast - 9 am to 11 am

Lunch - 11 am to 2 pm

2010 Independence Day Fireworks - Info & tips

1. Observe "NO PARKING" signs. Violator's car will be towed at their expense (Up to \$300 cash only!) Any vehicles parked on Pine Mountain Drive **MUST** have ALL 4 WHEELS OFF the white line!

No parking on any other PML streets.

2. When walking, please stay to the sides of the roads so you don't block traffic or emergency vehicles.

3. Please take advantage of riding the shuttle

buses and water taxi's. Shuttle buses run from 4 pm to 11 pm.

4. Cooperate with the "No Smoking" and "No Pets" resolution for the Marina.

5. NO Lifeguard on Duty at any swim area!

6. Please be respectful of Private Property and DO NOT trespass.

7. Keep your "mountain hide-a-way" clean and beautiful ~ please don't litter. Dispose of litter in the proper receptacles provided.

8. Dunn Court Beach will be closed all day Saturday, July 3rd for the fireworks display set up.

9. Dunn Court Beach - ALL boats **MUST** be relocated/removed from the beach the day before the fireworks display.

10. Fisherman's Cove - No swimming is allowed in this area at any time.

11. Non-property owner boats prohibited on lake.

12. Please be patient and kind to your fellow members and guests, and enjoy the fireworks!

MORE INDEPENDENCE WEEKEND FUN

FISHING DERBY FOR KIDS OF ALL AGES:

Be sure to sign up at the Marina Store for the Fishing Derby. There is a \$5 entry fee and it runs from June 1 through August 29. For valid entry you must sign up prior to catching your fish. Prize for the heaviest fish.

Other Events

Stables Friday, July 3rd

BBQ Tri-Tip & Hot Dog Dinner – Live Music, Dance, 5-10 pm

Hosted by the Country Mountain Riders & Pine Mountain Lake Association

Enjoy a Tri-Tip BBQ dinner with all the fixin's and Hot Dogs for the Little Wranglers, trail rides are available, live music and MORE!

Purchase your Dinner Tickets at the door.

Adults \$12 and Children (under 12) \$7

- BBQ Tri Tip with green salad, Texas beans and garlic bread
- Live Music
- Trail rides available
- Horse Presentation & Color Guard 7:00 pm

Marina Sunday, July 4th

Sand Castle Contest 9:30 am to 11:30 am

Fun & games 1 pm to 3 pm with prizes awarded.



ILLEGAL FIREWORKS?

For the safety of all, fireworks are prohibited in Pine Mountain Lake. Please report all illegal fireworks activity to the main gate at: (209) 962-8615

Parking & tow away zones

Unfortunately every year we are forced to tow vehicles parked in marked tow away zones and unauthorized areas. It is costly to the owner (Up to \$300, plus storage if applicable, cash only!) and it is an unpleasant ending to a fabulous day at the Marina. To keep the tow zones clear we offer a FREE Marina Shuttle Bus with pick up from designated locations.

- When applicable, please be sure your handicap tag or sticker is visible in each vehicle when parked

at the Marina. Also, be sure your current property owner hanging tag or sticker is visible or your vehicle is subject to towing.

PLEASE NOTE: PML streets are governed by the California Vehicle Code. The Vehicle Codes are enforced by our local Law Enforcement (CHP and Tuolumne County Sheriff's Department). If there is a vehicle illegally parked in the road, it will be towed. The authority code is SEC. 22651 (k) CVC. The CHP will be enforcing this as well as all Vehicle Codes.

Special Events are even more special at the
The Grill at Pine Mountain Lake



Wedding Receptions & Ceremonies * Bridal Showers
Rehearsal Dinners * Family Reunions * Anniversary Parties

Our staff is ready to help you plan the event that's perfect for you. Indulge yourself. Relax, enjoy and celebrate while our staff takes care of every detail. Our two facilities can each accommodate up to 200 guests. And it's easy to take care of out-of-town family and guests with the large selection of nearby affordable lodging.

Call 209/962-8638 for details!

Little Firm,
Big Ideas



Award-winning Design

- Publications & Catalogs
- Custom Logos
- Websites & MySpace
- Brochures
- Advertising
- Textile Design
- Stationery
- Printing
- Much More!



209.962.0342
sabredesign.com
Located in Groveland!

MARINA
12495 CASSARETTO COURT
 Marina 209.962.8631
 marina@pinemountainlake.com

Boat registration, launching, docking, boat rentals, water-ski sign-ups, fishing licenses, marina entrance, beach security and gas dock are all controlled from the Marina Store. **NO ONE UNDER THE AGE OF 16 IS PERMITTED IN THE MARINA UNLESS ACCOMPANIED BY AN ADULT.** No Lifeguard on Duty.

MARINA STORE HOURS

Store is open seven days a week (209) 962-8631
 Credit Cards Accepted!
 May 1 to May 14 (limited hours) 8 am - 5 pm
 May 15 to September 6th 7 am - 6 pm
 Gas Dock Hours 7 am - 5:30 pm
 Email the Marina Manager
 at marina@pinemountainlake.com

MARINA LAKESIDE CAFÉ

Avoid the wait; call your order in (209) 962-8630. Watch the website for Dinner Specials. Open daily throughout the Summer Season

May 15 to May 21, open 11 am to 4 pm
 May 22 to September 6 regular hours below
 Sunday to Thursday 11 am to 6 pm
 Friday & Saturday 11 am to 7 pm
 Sunday (holiday weekends) 11 am to 7 pm

September 7 to 19 open 11 am to 4 pm
 Friday & Saturdays open 11 am to 7 pm (limited Sunday hours)

*All hours subject to change due to weather and circumstances.

BOAT REGISTRATION FEES

Registration fees are based on the calendar year and are non-refundable.

Power/Electric Boats	\$75 per year
Paddle Boats, Rowboats, Canoes, Kayaks, Windsurfers, and Sail Boats	\$40 per year
Float Tubes, Inflatable's	\$25

**Marina parking
 lot hours are from
 6 am to 10 pm.
 Cars must be removed from
 all beach location parking
 lots after hours
 or they will be
 subject to towing.**

BOAT REGISTRATION

To register your boat for Pine Mountain Lake; (a) you must be a property owner in PMLA and (b) the property owner must have their name on the DMV title/registration. All watercraft must be registered with Pine Mountain Lake Association before putting on Pine Mountain Lake. This includes; canoes, kayaks, paddleboats, float tubes, windsurfers, rowboats, electric boats.

You may register your boat/watercraft at the Main Gate, January thru mid May or at the Marina Store, May thru September. All registration tags are valid from January 1 to December 30 (1 year).

To register your boat for Pine Mountain Lake; you need the following information:

1. Proof of property ownership in Pine Mountain Lake (gate card).

2. Current DMV boat registration.
3. California Vessel Registration Number (number on current DMV sticker).
4. CF numbers.
5. Copy of current boat insurance policy.
6. Insurance Coverage minimum \$300,000.00 liability, all boats.
7. Pine Mountain Registration form.
8. Paid registration fee for Pine Mountain Lake.

To register paddleboats, sailboats, rowboats, canoes, kayaks, float tubes, and windsurfers:

1. Proof of property ownership in Pine Mountain Lake Association (gate card).
2. Copy of homeowner's insurance policy with a liability of \$300,000.00.
3. Pine Mountain Lake registration form.
4. Paid registration fee for Pine Mountain Lake.

Non-Property owner boats prohibited on lake.

All items must be in hand to register your vessel. **NO EXCEPTIONS.**

Beach space reservations are accepted beginning February 1st of every year.

Lake Cruise Boat Charter per Hour \$85.

Special Cruises Available - see Marina Manager for details.

WATER TAXI

The perfect way to avoid the crowded parking at the Marina. Park your car at Fisherman's Cove, Dunn Court or Lake Lodge and ride one of our two CUSTOM 18 PASSENGER WATER TAXIS! 2010 Water Taxi Rates: \$3 per adult for an unlimited day pass, \$2 per child (8 yrs & under) for an unlimited day pass.

All prices subject to change without notice!

"Friends of the Lake"

Friends of the Lake host the "Music at the Marina" at 5:00 pm on Sunday, August 8. The evening starts with a potluck dinner at the west end of the Marina beach. Popular folk singers Chris Miller and Lori Brandon will entertain from 6:00-8:00 pm. Both Chris and Lori are former New Christie Minstrels and their music is a wonderful mixture of favorite folk songs and old-time rock and roll. Come sing-a-long and enjoy a warm summer evening on the Marina lawn. No charge, open to all. Bring your place setting and a dish to share.

August 9 "Lake Swim"

Friends of the Lake presents the annual "Lake Swim" with an open lake swim from Dunn Court to the Marina at 3:00 pm, Sunday, July 11. You can race or just swim for fun; proficient swimmers only. All swimmers will register and sign a liability waiver at Dunn Court at 2:45pm. Watch the PML News and mailbox flyers for details.

Boat Docking Rates

Boat slips; beach spaces, mud flats and rack spaces are for designated property owner's use only and are assigned by the Marina Manager. Get on the waiting list early for a seasonal boat slip - the waiting list is running approx. 2 years for ski boats and 4 years for pontoon boats.

	Seasonal
Boat Slips	\$400
Oversized Boat Slip	\$525
Beach (Marina West end)	\$175
Beach (Dunn Court)	\$155
	add \$10 for sail Locker
Rack	\$120
Mud Bank (Ski & Fishing)	\$125

No trailer parking permitted except for day use only. No boats will be permitted in the dock slips from October 31, 2010 through May 1, 2011. Owners of boats left at the Marina dock or beach area after October 31, 2010 may be subject to a daily surcharge.

BOAT RENTALS

A \$20 deposit and I.D., a property owner's gate card, or a credit card is required on each boat rental. See the Marina Manager for weekly rates.

Boats		Mon. - Fri.	Sat. - Sun. - Holidays
Capacity - Paddle Boat 2-4			
Paddle Boat	Per Hour	\$20	\$25
Paddle Boat	Per 1/2 Day (4 hours)	\$60	\$75
Paddle Boat	Per Day (8 hours)	\$110	\$135
Capacity - Sail Boat 2			
Sail Boat	Per Hour	\$20	\$25
Sail Boat	Per 1/2 Day (4 hours)	\$60	\$75
Sail Boat	Per Day (8 hours)	\$110	\$135
Capacity - Kayak 2			
Kayak	Per Hour	\$15	\$20
Kayak	Per 1/2 Day (4 hours)	\$45	\$80
Kayak	Per Day (8 hours)	\$90	\$120
Capacity - Gas Fishing Boat 4 and 6**			
Gas Fishing Boat	Per Hour	\$25	\$30
Gas Fishing Boat	Per 1/2 Day (4 hours)	\$75	\$85
Gas Fishing Boat	Per Day (8 hours)	\$125	\$145

**Must be 16 years or older with proof of a driver's license.

Boat fueling station at affordable rates!

Prices subject to change without notice.

MARINA LAKESIDE CAFÉ

Marina Lakeside Café Menu

All prices include sales tax where applicable

- Hamburger – single or double
- Cheeseburger – single or double
- Low Carb. Burger – single or double
- Veggie Burger
- Patty Melt
- Philly Cheese steak
- Grilled Cheese
- Italian Sausage Hoagie
- Grilled Chicken Breast Sandwich
- Chicken Tenders
- Shrimp Basket
- Fish & Chips
- Hot Dog – add cheese/chili or both
- Corn Dog
- Nachos
- French Fries
- Onion Rings
- Bag of Chips
- Cold Sandwiches – turkey or tuna
- Green Salad – add chicken or tuna
- Cup of Chili
- Soft Serve Ice Cream
kiddy cup or adult cup
- Fancy Ice Cream Bars
- Shakes – add malt
- Fruit Smoothies
- Soft Drinks - 16 oz. or 32 oz.

Pepsi, Diet Pepsi, Root beer, Dr. Pepper, Sierra Mist
Raspberry or Unsweetened Tea

Beer

must be at least 21 yrs
to buy alcohol – we check ID's
(Prices listed at the Marina Grill)
Menu and prices subject to change
without notice.

MARINA LAKESIDE CAFÉ HOURS

Avoid the wait, call your order in!
(209) 962-8630

Open daily Summer Season
Hours subject to change due to weather
and circumstances

May 15 to May 21

open 11am to 4pm
May 22 to September 6 regular hours below
Sunday to Thursday 11 am to 6 pm
Friday & Saturday 11 am to 7 pm
Sunday (holiday weekends) 11 am to 7pm

September 7 to 19

open 11 am to 4 pm
Friday & Saturdays open 11 am to 6 pm
(limited Sunday hours)

Visit our friendly full-service MARINA STORE

For all your Fishing, Boating & Souvenir Needs!

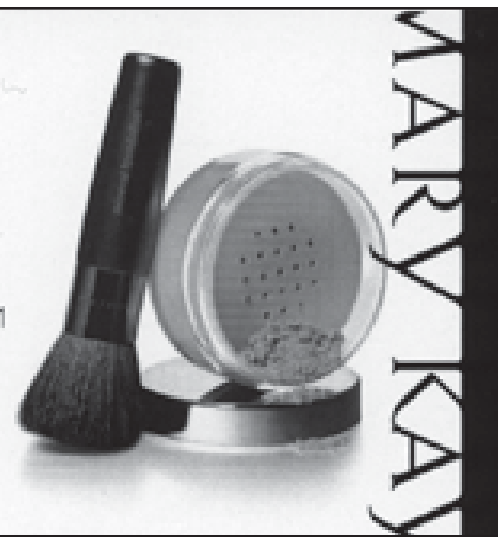
- Rafts, Safety Floats & Beach Balls •
- Candy • Fishing Licenses • Sunglasses •
- Volleyball & Umbrella Rental • Bait and Fishing Tackle • Sun Screen
- PML Logo Hats & Shirts • Beach Toys
- Ice, Film, Batteries & Much More!

Major credit cards welcome!



JOANNE SCOTT
Independent Beauty Consultant

13166 Wells Fargo Dr
PO Box 1257 Groveland CA 95321
Home 209-962-6394
Cell 209-573-1415
Bernijo3@aol.com
www.marykayjbernasconi



Real Estate Company Offices in Groveland

Members of the voluntary sign-free community in Pine Mountain Lake

Century 21 Wildwood Properties

www.century21wildwood.com
Kimberly Darr, Broker
Michael Beggs, Broker Associate
(209) 962-4188 Direct
(209) 840-2294 Cell
(209) 962-7238 Fax
email: beggs4homes@yahoo.com

Coldwell Banker Mountain Leisure Properties

www.mtnleisure.com
(800) 659-5263 Toll Free
(209) 962-5252 Office
Yosemite Region Resorts - Rentals
www.yosemiteregionresorts.com
(800) 962-4765 Toll Free
(209) 962-4396 Office

Constance Elliott, Real Estate Broker

www.ForAllSeasonsRealEstate.com
(209) 768-3045
pinemountainhomes@hotmail.com

Pine Mountain Lake Realty

www.pmlr.com • sales@pmlr.com
19000 Main Street, Suite A
P.O. Box 738, Groveland, CA 95321
(209) 962-7156 Office
(209) 962-6710 Fax

Re/Max Yosemite Gold

www.pinemtnlake.com
(888) 962-4080 Toll Free
(209) 962-4080 Office

Re/Max Yosemite Gold Vacations

www.yosemitegoldvacations.com
(209) 962-7180 Rentals

Roger Powers Realty

www.rogerpowers.com
(209) 962-4432 Office
(209) 962-7095 Fax

Sierra Homefinders

Pine Mountain Lake Specialists
www.sierrahomefinders.com
(800) 367-0626 Office
(209) 962-5940

Sugar Pine Realty

www.sugarpinerealty.com
18727 Main St, Ste. A, Groveland, Ca. 95321
(209) 962-7765 Office

Yosemite Gateway Properties

Nancy Jones, Broker/Owner
18731 Main Street, PO Box 606
Groveland, CA 95321
(209) 962-7125



SWIMMING POOL

12600 MUELLER DRIVE

Theresa LeBarre, Pool Manager

209.962.8634

pool@pinemountainlake.com

New ADA Accessible Entrance Ramp and Restroom/Shower

POOL SEASON

May 15 – October 31

Swim at your own risk.

No lifeguard on duty!

The Pine Mountain Lake Pool is a family recreation center with many different activities: ping pong, board games, cards, books and magazines, water toys and more are all available from the pool attendants. For your convenience, the pool also has a snack bar and pool store. The snack bar and store are open during all Pool hours. Enjoy our quality snacks & goods at very competitive prices!

Pool Capacity: 63

POOL HOURS – Summer

May 15 – September 6th

Pool is open seven days a week during the season, weather/pool temps permitting.

*Open to property owners and their escorted guests
10 am*

Open to renters and guests 12 noon

Pool closes every night for everyone 9 pm

POOL HOURS – Fall

Sept 6th thru Sept 19th

10:00 am to 7 pm (weather permitting)

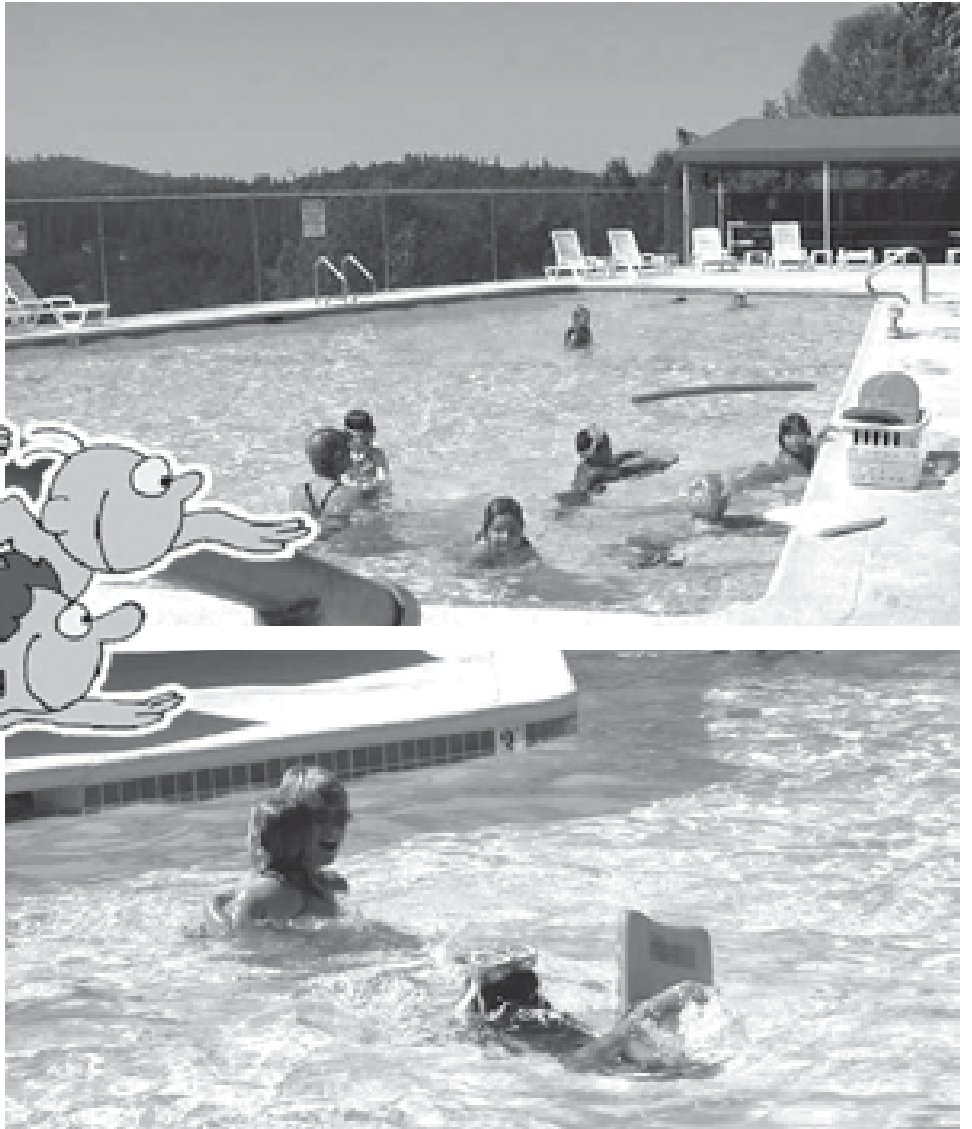
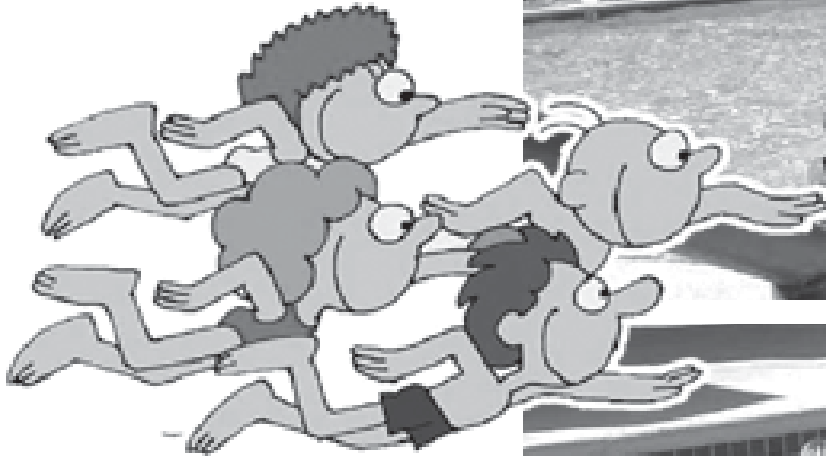
Sept 20th thru Oct 31st

Noon to 5pm (weather permitting)

PRIVILEGES

There is no charge to use the pool. Guests must be accompanied by a property owner or have a valid guest pass. No admittance without property owner card or valid guest pass. Additional identification may be required, property owner cards are non-transferable. No person(s) is permitted in the pool area without first registering with pool attendant. A limit on number of persons in the pool at one time is enforced.

**SWIM AT YOUR
OWN RISK.
NO LIFEGUARD
ON DUTY!**



WATER AEROBICS CLASSES

Open to all property owners. No charge to participate. Enjoy aqua exercise classes (instructed by selected audio tapes) for all fitness levels. Each class consists of a series of aquatic exercises, which are performed in the pool using the water as resistance. Simply perform the exercises for a safe and effective means of achieving overall body and cardiovascular conditioning.

Water Aerobic Classes - ALL SEASON LONG from May 15 - Oct. 31

2 sessions available – no charge for exercise class. Instructed by selected audiotapes.

Monday through Friday 8:00 am CD of first lesson begins

Monday through Friday 9:00 am CD of second lesson begins

SWIM LESSONS

All swim lessons taught by a Certified Water Safety Instructor. Lesson availability based on hiring of a Certified Instructor. Check with pool attendant for registration & scheduling availability (209) 962-8634.

SWIM LESSON FEES

Property Owners

\$30 per person per course

\$44 per family per course

(max of 3 students per family)

Renters/Guests:

\$42 per person per course

\$54 per family per course

AGE REQUIREMENT

Children under 14 must be accompanied and monitored by an adult at least eighteen (18) years of age.

INFANTS AND TODDLERS

Children not potty-trained must wear plastic pants or approved swim diapers. Please bring your own or purchase at the pool store.

SPECIAL ACTIVITIES AT THE POOL

Pool Socials: Fun family entertainment, including music & BBQ one Saturday a month in June, July and August from 6 pm to 8 pm. Come out and meet the staff! Check with the pool staff for party information as the dates approach. See Pool Attendant on duty for ping pong balls & paddles, snack bar items and pool store purchases.

POOL SNACK BAR & STORE

Open during all pool hours. Enjoy our quality snacks & goods at very competitive prices!

SNACK BAR

Convenience Food • Candy Bars • Ice Cream • Assorted Beverages

POOL STORE

Sun Care Products • Pool Toys • Swim Goggles • "Swimmers" Diapers
(max of 3 students per family)



nature's whole food depot

the mother lode's blessing


19073 standard road
sonora, ca 95370

natureswholefooddepot.net

open sat 8:30-6:30, sun 10-4

owners: dan & carol fox
(209) 532-6676

VICTORIA LYNN
Massage Therapy



962.6288
Pine Mountain Lake



Season's Gifts
Vintage & New

Shopkeeper: Karen Edner
18911 A Ferretti Rd. / In MarVal shopping center
209-962-5099

Century 21
WILDWOOD PROPERTIES, INC.



18800 Main Street
Groveland CA
Cell 209.770.2328
Home 209.962.6316
Fax 209.962.7497
peggiesharp@yahoo.com
peggiesproperties.com

Peggie Sharp
Associate Broker
CREP 00020154

THE LABOR DAY



COUNTRY
BBQ

At the Pine Mountain Lake Stables

From 2 pm to 7 pm

ENJOY!

BBQ steak & chicken


Live Entertainment by Chains Required

BBQ Tickets
\$12 General \$7 Under 12
\$40 Family 5-pack

Kids' Activities
Historical Displays
Photos
Auctions -
Silent & Live
Bake Sale
Horse Activities
& Much More!



In Balance with Nature?



CHIROPRACTIC
WELLNESS
CARE
Dr. Ron Oler

GENTLE SPINAL CARE
NUTRITION
REHABILITATION EXERCISE

962-0662

18847 MAIN STREET, GROVELAND
WEST OF FOLWELL MARKET



PAINING

Bay Cal Painting

PINE MOUNTAIN LAKE
LIC #795283



**Residential
& Commercial**

**Exterior
& Interior**

Deck Refinishing

**Expert Color
Consultation**

VISA MasterCard

FREE ESTIMATES

209.962.4777

www.baycal.com • email: davec@baycal.com

YOUR PERSONAL REALTOR



It's Simple... I Listen

June Dee
GRI/Realtor®
2010 President of Hetch Hetchy
Association of Realtors
DRE Lic#: 01700083



Yosemite Gateway Properties
2009 TOP PRODUCER

209-962-5190 Office
209-770-5190 Cell
junedee@ymail.com
www.groveland-real-estate.com

YOSEMITE GATEWAY PROPERTIES • 18731 Main Street • PO Box 606
Groveland, CA 95321 • 209-962-5190

BUYING • SELLING • HOMES • LAND

Liz Mattingly

Broker Associate



MOUNTAIN LEISURE
PROPERTIES

209-962-1129
lmattingly@mtnleisure.com
View all Properties for sale
go to my web page:
www.lizmat.cbmlp.com



HIGH SPEED CABLE INTERNET SERVICE NOW AVAILABLE



**CABLE • WIRELESS BROADBAND
SERVICE**
SERVING GREATER GROVELAND AREA
209-962-6373



The Historic Groveland Hotel

Your local getaway for a romantic weekend, a family celebration, or for a spirited time! Savor our California-fresh cuisine, created by Executive Chef Greg Lutes, and explore our extensive wine list, winner once again of the Wine Spectator Award of Excellence for 2010. Join us for breakfast, enjoy dinner in our Garden Courtyard, or simply relax with a glass of your favorite wine on our wraparound veranda.

**NEW FOR
SUMMER 2010!**

- ◆ Wine, Cheese and Chocolate Pairings
- ◆ Celebrate our 20th Anniversary with us!
- ◆ Yosemite Courtyard Theater - New acts and old friends! Starts Friday, May 28

www.groveland.com ◆ 209-962-4000 or 800-273-3314 ◆ guestservices@groveland.com



Much thanks to the following photographers for use of their photos:
Terri Couey, Janean Amos, David Wilkinson, Jeff Sprague and Nancy Perry