



DWR



GOLDEN MUSSEL

Limnoperna fortunei

PRESENTATION TO THE INVASIVE SPECIES COUNCIL OF CALIFORNIA

December 17, 2024 | Jay Rowan

Department of Fish and Wildlife

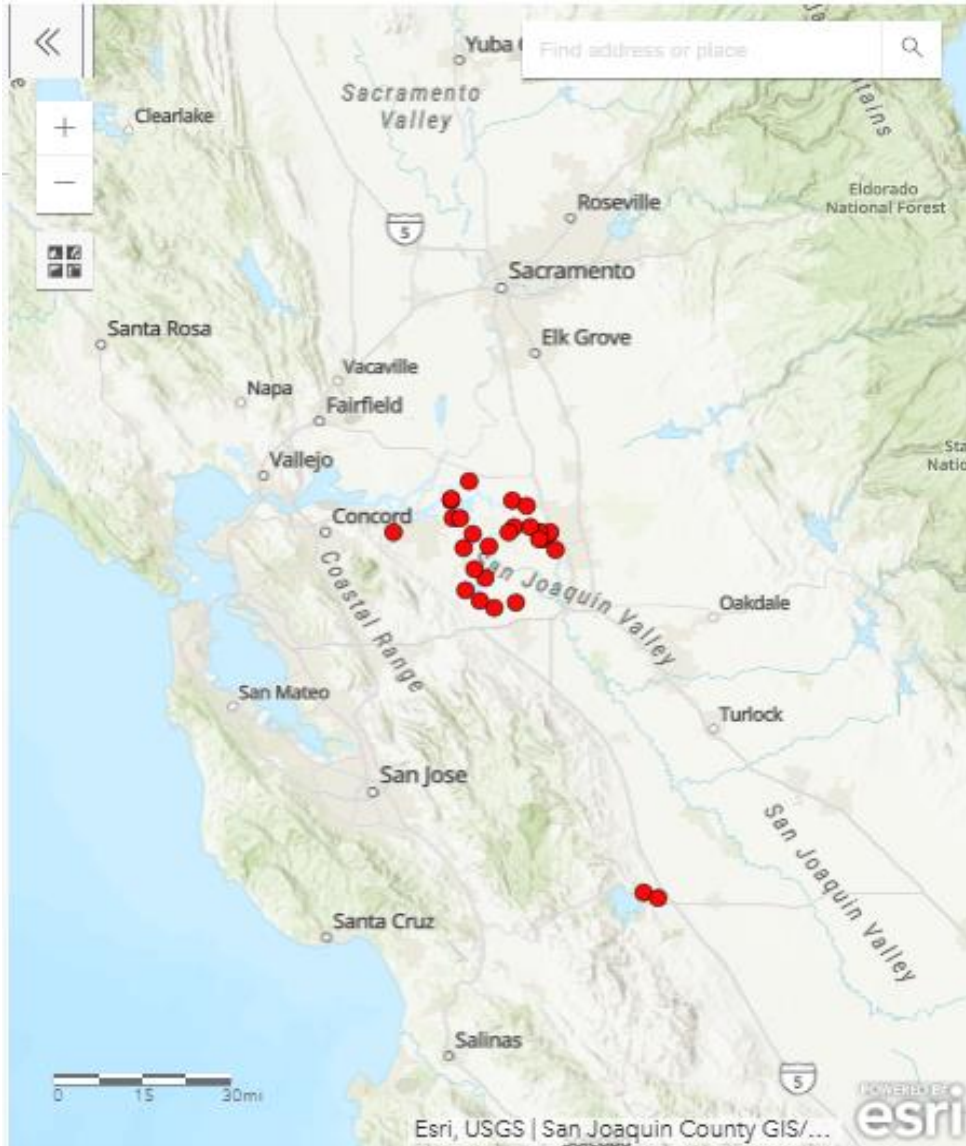
Golden Mussels

- Native to China and Southeast Asia
- Established non-native populations
- Intensive filter feeding
- High Reproductive and growth rate
- Mass colonization of infrastructure, necessitating ongoing removal to maintain operation
- Nearly all California fresh and brackish waters are suitable for establishment



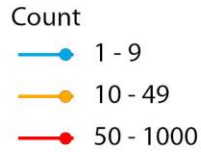
DWR monitoring equipment. Oct 2024.

Detections to Date

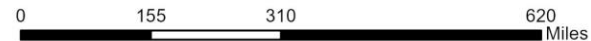


- First Detection in North America
 - Port of Stockton
 - SJ River
 - Points leading to Clifton Court Forebay
 - Old River
 - Middle River
 - Victoria Canal
 - Italian Slough
 - Contra Costa Canal
 - O'Neill Forebay

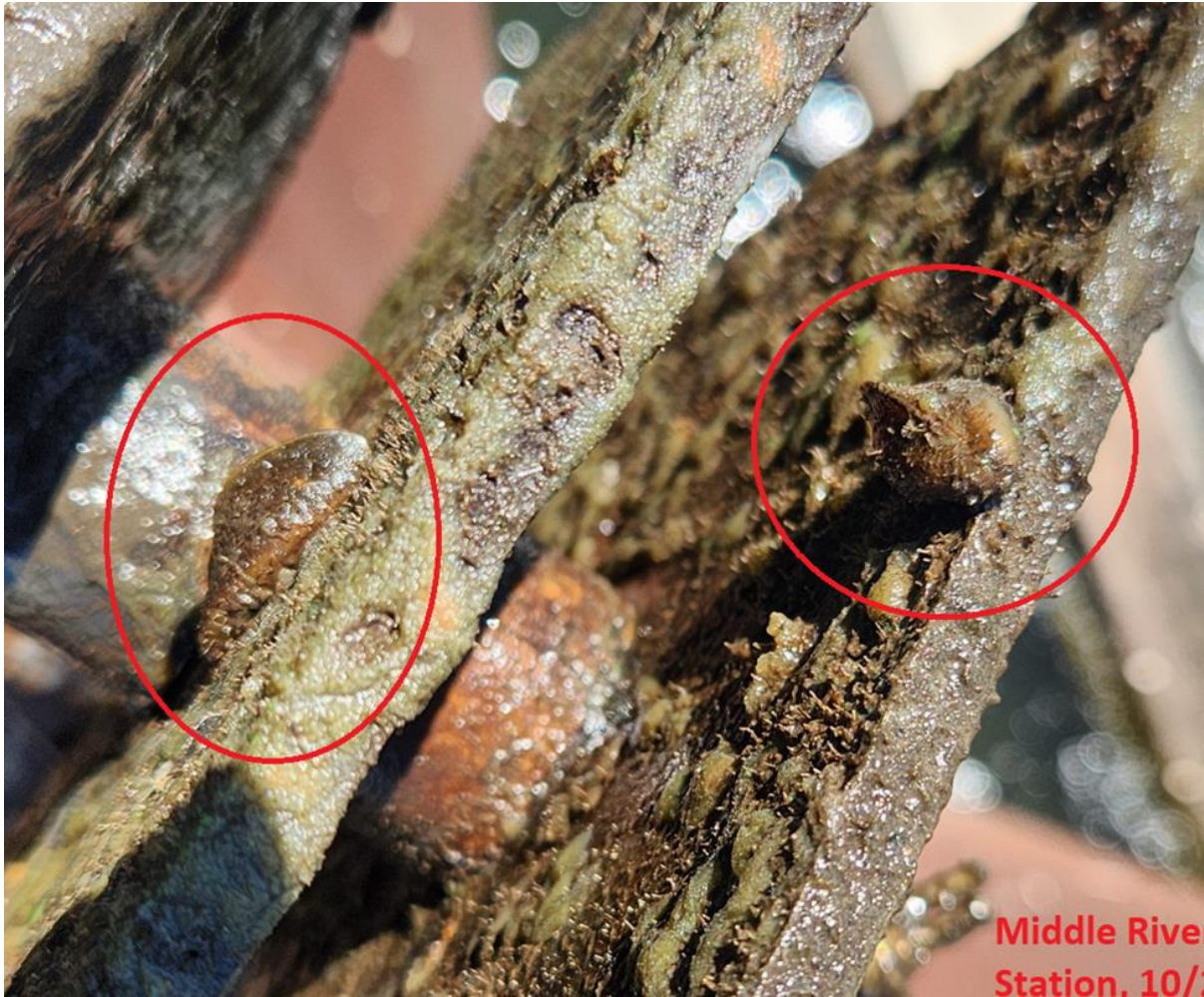
Boat Inspections Where California Delta Was Last Water Visited: 2024



Location	State	Count
Lake Berryessa	CA	831
Lake Tahoe	CA/NV	291
New Melones Lake	CA	163
Clear Lake	CA	148
Ashland POE	OR	108
Calero Reservoir	CA	80
Lake Sonoma	CA	73
Lexington Reservoir	CA	42
Lake Nacimiento	CA	37
Evanston POE	WY	31
Cle Elum Eastbound	WA	28
Coyote Lake	CA	26
Stevens Creek Reservoir	CA	23
Pasco	WA	21
Pyramid Lake	NV	19
San Antonio Lake	CA	16
Brookings	OR	16
Lake Mendocino	CA	15
I-15 Port of Entry	UT	11



Response



Contra Costa County. Oct 2024

- Golden Mussel Task Force
 - CDFW
 - CDFA
 - FGC
 - Parks-DBW
 - DWR
 - SWRCB
 - SLC
 - USBR
 - US FWS

Golden Mussel Task Force



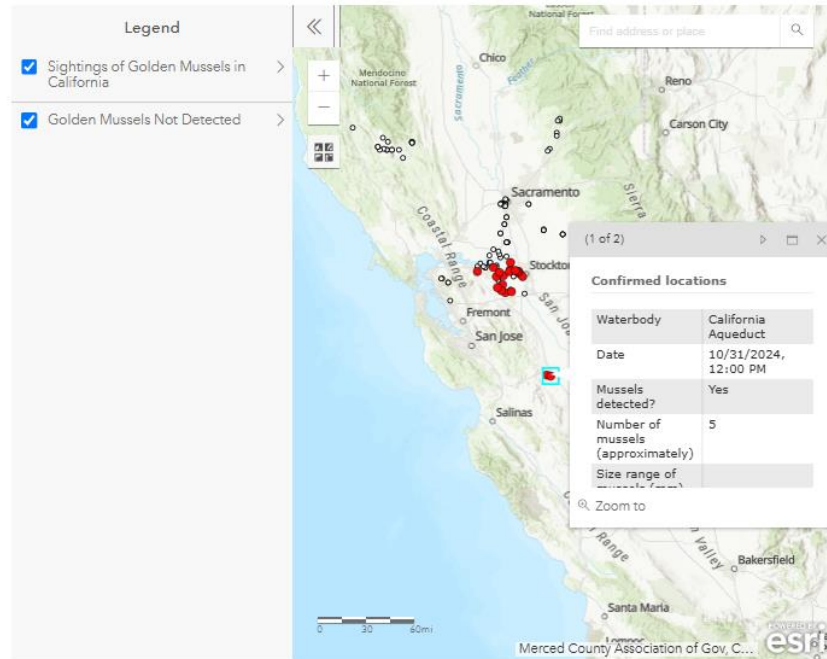
DWR

- Develop Golden Mussel Response Plan
 - Policy, Regulations, Statute
 - Containment and Prevention Options
 - Coordinated Monitoring
 - Identify Funding Opportunities
 - Education and Outreach
 - Partners

Monitoring

Home Fishing Hunting Licensing Conservation Learning

Map of California Golden Mussel Detections

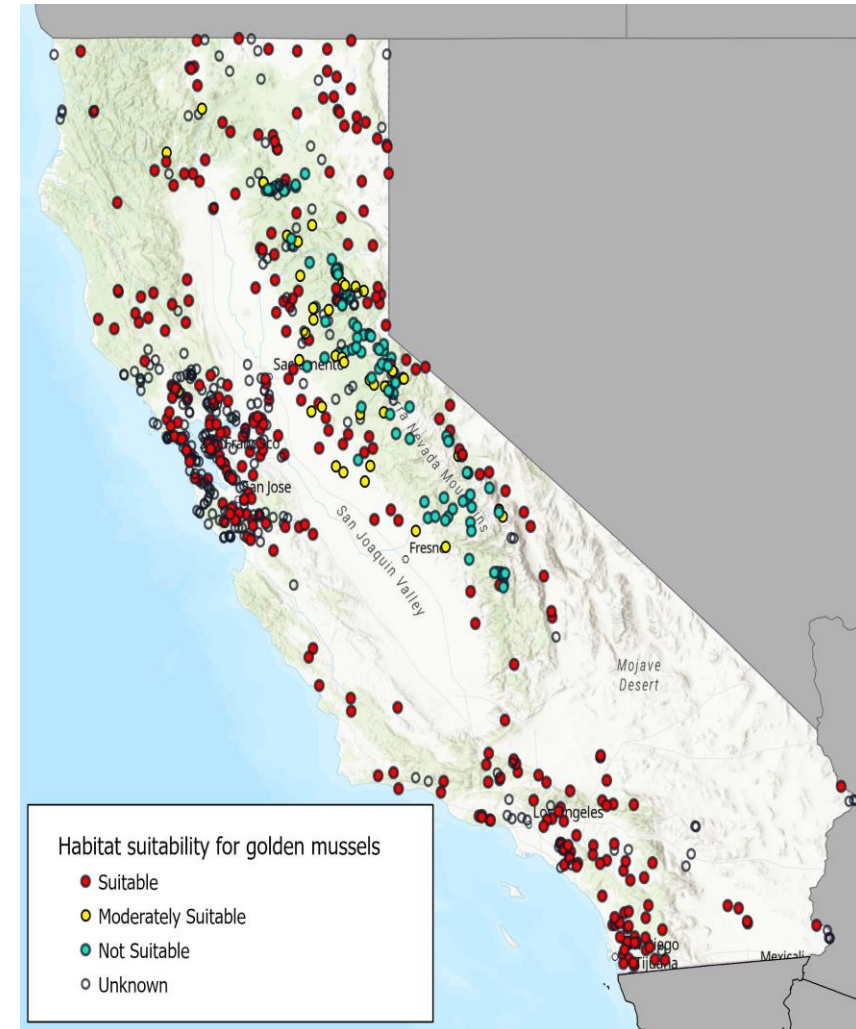


Existing Q/Z Monitoring Network needs to be expanded.

Web tools

Laboratory Capacity

K9 Detection



If you observe this species take clear, close up photos, using some suitable object to show scale (size) and immediately [report online](#).

Policy, Regulations, Statute



- CDFW/FGC Emergency Regulation to add to Restricted Species List
- Commercial Ballast Water Emergency regulations
- CDFA looking at potential of adding as an Agricultural Pest.
- Discussion on Changes to Fish and Game Code 2301 and 2302
- 676 Harbors and Navigation
- Containment Scope?

Containment, Prevention, Education, Funding



- Eradication?
- Delta containment will be challenging
 - Water movement
 - Moored vessels
 - Overland movement
- Prevention of spread
 - Web tools
 - Inspection and decontamination
 - Research
- Education and Outreach
- Funding

Credits | Questions | Contact

Jay Rowan

Branch Chief

Fisheries Branch

Fisheries@wildlife.ca.gov

