

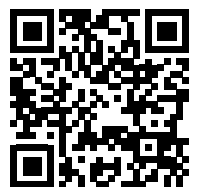
PINE MOUNTAIN LAKE NEWS



THE OFFICIAL MAGAZINE OF, AND FOR, PINE MOUNTAIN LAKE PROPERTY OWNERS

**WELCOME TO
THE ALL-NEW
PML NEWS
MAGAZINE**

HAPPY NEW YEAR



JANUARY 2025

YOSEMITE REGION REAL ESTATE

18687 Main St, Suite E, Groveland, CA 95321
209-962-1111 ~ DRE #01964114

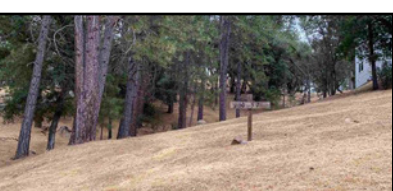
YOSEMITE REGION
Real Estate



13340 Yorkshire Rd **HUGE PRICE REDUCTION!** Chalef-style home on .74 acre. Three levels, solar power and whole-house generator. 2bd, 2ba plus a loft for sleeping or other. Knotty-pine ceilings and large windows offer plenty of light & views of the surrounding countryside. Laundry room, full bath and game/recreation room on the lower level. Seclusion and privacy. \$299,000 #20241465



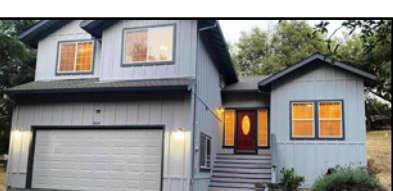
20796 Non Pareil Wy **COMPLETELY FURNISHED** with top notch furniture, décor, kitchenware, bedding, linens, spa and outdoor furniture! Two-level, 5bd, 3ba, 2140sf home on .64 acre lot. Central H/A, propane fireplace, double-pane windows, laminate & carpet flooring, stainless appliances and claw-footed tub. Bonus room w/pool table. Covered decks on both sides and a hot tub. EV charging station. Backs to ranchland, near Big Creek hiking trail. \$594,500 #20240905



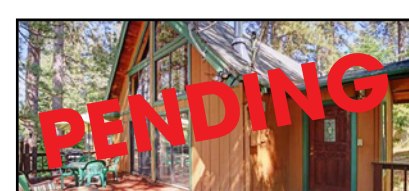
Unit 10 Lot 57 McKinley Wy **BUILD YOUR DREAM CABIN** on this upsloping .53 acre lot. This sewerated property is one of the lowest-priced lots in Pine Mountain Lake. Cut for a driveway is off McKinley Wy. Enjoy all the amenities for Pine Mountain Lake. \$5,900 #20241172



13145 Jackson Mill **PICTURESQUE COTTAGE** on .64 acre lot, with a seasonal creek, natural rock formations and a decorative wooden bridge. Covered porch, 3bd, 2ba, central H/A, security system, wood-framed dual-paned windows. Slate tile and new carpeting in 2023. Fenced & gated area for pets or garden. RV or boat parking, with electrical hookup and EV level-2 charging port. Workshop/hobby out-building. \$449,000 #20241142



19329 Ferretti Rd **SPLIT-LEVEL HOME** with soaring ceilings and a modern design greets you as you enter. Spacious kitchen with granite counters and newer appliances. Step-down living area with a cozy fireplace. Newly installed laminate flooring, plus freshly painted interior & exterior. Finished 2-car garage and detached shed for extra storage. Plenty of parking for your RV or boats. Almost 1/2 acre. \$382,500 #20240917



13141 Mueller Dr **PARKLIKE SETTING**. Vaulted ceiling, rake-style windows and natural wood paneling. A native stone hearth with pedestal wood stove. 2bd, 1ba on the main level. The loft 3rd bedroom has a balcony overlooking the living room and views across the property. Separate entrance to lower level bonus room w/full bath and additional area currently being used as a 4th bdrm. \$349,000 #20240825

100% Local Long-Term Rentals Services
Now Accepting Homes for Long-Term Rentals!

- Monthly Rentals & Tenant Placement
- Tenant Screening & Credit Reports
- Move-In / Move-Out Inspections
- Monthly Statements & Owner Payments
- Scheduled Maintenance & Repairs
- Local, State & Federal Tax Requirements

- | | | | | | | | | | | |
|---|--|---|---|--|---|--|---|---|---|---|
| 
ROB STONE
OWNER/REALTOR®
DRE #01025463 | 
BJORN WAHMAN
BROKER
DRE #00706559 | 
TARA STONE
MANAGER/DPG
DRE# 01106544 | 
LIZ MATTINGLY
BROKER ASSOCIATE
DRE #00709618 | 
MIRIAM MARTIN
REALTOR®, RSPS, ASP
DRE #01400779 | 
ANDREW RIETVELD
REALTOR®
DRE #01994156 | 
RYAN NIEDENS
BROKER ASSOCIATE
DRE #01940007 | 
KATHY NIEDENS
REALTOR®
DRE #01113243 | 
BRENDA ZUNIGA
BROKER ASSOCIATE
DRE #00997621 | 
CAPRICE KROW
PROP. MGR/LDP
DRE# 01179023 | 
CORY STONE
PHOTOGRAPHER
VIDEOGRAPHER |
|---|--|---|---|--|---|--|---|---|---|---|

Now Accepting Specialty Homes for 2025!

YOSEMITE REGION RESORTS
Vacation Rentals




Patrick Gaskin
Vice President
of Operations

“PRIEST RANCH” is a beautiful property located on top of a mountain in the Sierra-Nevada foothills. Amazing views of rolling hills, lakes and the coastal range. A unique 3-level home with 3bd, 2.5 ba, plus a guest house with built-in bunk beds, wood-burning stove, kitchenette and bathroom. Split-system heating & a/c, wifi, tv’s, gas fireplace, ceiling fans, microwave, dishwasher, two ovens, washer & dryer. Charcoal BBQ, EV charger & Pool. (Note: the pool may not be available during winter season) Two small-to-medium sized dogs permitted w/fee. Experience the beauty of being in the mountains!




Trisha Richardson
Guest Services


Sharron Wahman
Guest Services

- | | | |
|--|--|---|
| <ul style="list-style-type: none"> • LOCAL VACATION RENTAL SERVICES • OWNER-APPROVED RATES • ACCIDENTAL DAMAGE PROTECTION | <p>18687 Main Street, Suite E, Groveland, CA 95321
(209) 962-4396 • realfun@yosemiteregionresorts.com</p> | <ul style="list-style-type: none"> • PRE-ARRIVAL INSPECTIONS FOR GUESTS • PROFESSIONAL DEPARTURE CLEANINGS • 24-HR ANSWERING SERVICE FOR EMERGENCIES |
|--|--|---|

Submission Guidelines

The PML News is the Official Newspaper of Pine Mountain Lake Property Owners

The PML News is dedicated to reporting PML Association business and PML Association news to Pine Mountain Lake Property Owners.

All community related articles and notices will appear in the PML News on a SPACE AVAILABLE basis and at the DISCRETION of the PML News Publishing Editor.

DEADLINES

Advertisements must be received IN FULL (text, MLS info, images, logos, etc.) by the 21st of the month for the following month's edition. Only advertisements received in full will be guaranteed to be published in that month's edition. **NO EXCEPTIONS.**

MEDIA ACCEPTED

email

SOFTWARE (Articles)

InDesign, Microsoft Word, Apple Pages, or TXT formats only.

SOFTWARE (Advertisements)

PSD, JPG, PDF, EPS or TIFF only.

TEXT/GRAPHICS

Handwritten text is not accepted. Material composed completely of capital letters is not accepted. Please use uppercase and lowercase letters in composition. Ink jet printed images are not accepted. Images are accepted ONLY as camera ready art, original photos (to be scanned) or as JPEG, TIFF or PDF files created with above listed software. All scans and bitmap images must be in TIFF or JPG format at least 200 dpi at 100% (300 dpi preferred). Ad files are stored for 90 days from first run date. Older ads that have not been running must be resubmitted. (See Display & Insert Advertising Contract "Design and Preparation Charges.")

E-MAIL TEXT/GRAPHICS

Text/graphics may be delivered as e-mail attachments via the Internet. Send to:

pmlnews@sabredesign.net.

AD DESIGN and PROOFS

Ads that are requested to be sent to other periodicals require a usage fee from the advertiser (see Display & Insert Advertising Contract "Design and Preparation Charges"). Proofs are available upon request and final proof approval for all ads is expected within 24 hours. Changes made are LIMITED to typographical or graphic placement errors. NO OTHER ADDITIONS OR CHANGES WILL BE MADE.

SUBMISSION DEADLINES

Articles and Ads — 21st each month
Classifieds Ads — 23rd each month

PINE MOUNTAIN LAKE ASSOCIATION

1.209.962.8600

www.pinemountainlake.com

ADMINISTRATION OFFICE HOURS

8:00 AM TO 4:30 PM – MON THRU FRI

OPEN AT 8:45 AM SECOND TUESDAY OF EACH MONTH

THE OFFICE IS CLOSED BETWEEN 12:00 & 1:00 EACH DAY

2025 ADMINISTRATION OFFICES HOLIDAYS

(ADMIN OFFICE WILL BE CLOSED)

TUE 12/31/2024 NEW YEARS EVE

THUR 11/27/2025 THANKSGIVING

WED 1/1/2025 NEW YEARS DAY

FRI 11/28/2025 DAY AFTER THANKSGIVING

MON 2/17/2025 PRESIDENTS' DAY

WED 12/24/2025 CHRISTMAS EVE

MON 5/26/2025 MEMORIAL DAY

THUR 12/25/2025 CHRISTMAS DAY

FRI 7/4/2025 INDEPENDENCE DAY

WED 12/31/2025 NEW YEARS EVE

MON 9/1/2025 LABOR DAY

THUR 1/1/2026 NEW YEARS DAY

TUE 11/11/2025 VETERANS DAY

2025 PMLA BOARD MEETINGS SCHEDULE

(THIRD SATURDAY - UNLESS OTHERWISE NOTED)

JANUARY 18, 2025

JULY 19, 2025

**FEBRUARY 15, 2025
(President's Day Weekend)**

AUGUST 16, 2025 (Annual Meeting)

MARCH 15, 2025

**SEPTEMBER 27, 2025
(4th Saturday of the Month)**

APRIL 19, 2025

OCTOBER 18, 2025

MAY 17, 2025

(Board Budget Meeting)

JUNE 21, 2025

NOVEMBER 15, 2025

— NOTICE —

Listed below are ALTERNATE phone numbers for EMERGENCY use during power/phone/internet outages:

DEPARTMENT OF SAFETY – MAIN GATE – 1-209-768-8600

PMLA ADMINISTRATION OFFICE – 1-209-768-3998

THE GRILL AT PINE MOUNTAIN LAKE – 1-209-962-8658

VISIT US ONLINE
www.pinemountainlake.com

PHONE/EMAIL DIRECTORY

GENERAL MANAGER

Joseph Powell
gm@pinemountainlake.com

ASSISTANT GENERAL MANAGER
Michelle Cathey - 1.209.962.8640
agm@pinemountainlake.com

ADMINISTRATIVE ASSISTANT TO THE GENERAL MANAGER

Janessa Owens - 1.209.962.8627
gmassist@pinemountainlake.com

HUMAN RESOURCES
Shannon Abbott - 1.209.962.8628
pmlhr@pinemountainlake.com

E.C.C. ASSISTANT
Ashley Henderson - 1.209.962.8605
Plan Submittal, Compliance Fees
ecc@pinemountainlake.com

MEMBER RELATIONS
Shari Pingree - 1.209.962.8632
Gate Cards, Address Changes, Webmaster, Mergers
Lake Lodge Scheduling
pmlmr@pinemountainlake.com

COMMUNITY STANDARDS DIRECTOR
Suzette Lafranchi - 1.209.962.1241
communitystandards@pinemountainlake.com

COMMUNITY STANDARDS SPECIALIST
Carrie Harvey - 1.209.962.1242
compliance@pinemountainlake.com

RENTAL COMPLIANCE COORDINATOR
Nichole Smith - 1.209.962.1245
RCC@pinemountainlake.com

GENERAL INFO & LAKE LODGE SCHEDULING
Angela Hicks-Church - 1.209.962.8600
Receptionist
admin@pinemountainlake.com

MAIN GATE
1.209.962.8615
General Safety Inquiries, gate passes, campground
reservations, tennis reservations
campground@pinemountainlake.com
maingate@pinemountainlake.com

**ACCOUNTING
CONTROLLER**
Dan Szathmary - 1.209.962.8606
Accounting Procedures
controller@pinemountainlake.com

ACCOUNTING SUPERVISOR
Stacy Gray - 1.209.962.8618
sracct@pinemountainlake.com

RECEIVABLE/COLLECTIONS/ASSESSMENTS
Sally Owens - 1.209.962.8607
pmlar@pinemountainlake.com

ACCOUNTS PAYABLE
Tina Parmalee - 1.209.962.8626
pmlap@pinemountainlake.com

IT MANAGER

Yuris Daudish - 1.209.962.1243
ITManager@pinemountainlake.com

RECREATION AND SEASONAL OPERATIONS MANAGER
Melody Wisdom - 1.209.962.8604
pmlfun@pinemountainlake.com

DEPARTMENT OF SAFETY
DIRECTOR OF SAFETY
Natalie Trujillo - 1.209.962.8633
safety@pinemountainlake.com

SERGEANT
Teri Cathrein - 1.209.962.1244
dossgrt@pinemountainlake.com

MAINTENANCE DEPT
MAINTENANCE MANAGER
Rick Lafranchi - 1.209.962.8611
facmgr@pinemountainlake.com

ADMINISTRATIVE ASSISTANT
Patty Groothuyzen - 1.209.962.8612
maintenance@pinemountainlake.com

FIRE SAFETY COORDINATOR
Joe Milani - 1.209.990.5260
fsc@pinemountainlake.com

FIRE SAFETY INSPECTOR
Amanda Birmingham - 1.209.990.5263
inspector@pinemountainlake.com

FIRE SAFETY INSPECTOR
Jessica Heller - 1.209.990.5261
firesafety@pinemountainlake.com

GOLF COURSE
GOLF COURSE SUPERINTENDENT
Rob Abbott - 1.209.962.8610
super@pinemountainlake.com

GOLF SHOP
Doug Schmielt - 1.209.962.8620
Golf Pro Shop/Golf Reservations
golfshop@pinemountainlake.com

GOLF PRO
Mike Cook - 1.209.962.8622
golfpro@pinemountainlake.com

THE GRILL AT PINE MOUNTAIN LAKE
FOOD & BEVERAGE DIRECTOR
Andrea Wilson - 1.209.962.8639
clubmgr@pinemountainlake.com

Restaurant - 1.209.962.8638

OTHER PHONE NUMBERS
EQUESTRIAN CENTER MANAGER
Kendra Brown - 1.209.962.8667
stables@pinemountainlake.com

MARINA MANAGER
Dawn Pretzer - 1.209.962.8631
marina@pinemountainlake.com

PML NEWS
David Wilkinson - 1.209.962.0613
Ad/Article Submissions
PMLNews@SabreDesign.net

TABLE OF CONTENTS

Administration	3-25
PMLA Financials	9-10
Letters to the Editor	14
The Grill & Lounge	18-19
PML Clubs & Recreation	29-34
Community News	35-52
Classified Ads	53

GET IMPORTANT NEWS VIA EMAIL

eSNAP

ELECTRONIC SAFETY, NEWS & ALERT PROGRAM

Signing up for the new eSNAP program is quick and easy and gives you the ability to sign up for the information that you want to receive. Just head over to www.PineMountainLake.com and sign up today.

ABOUT EACH OF THE PROGRAMS

PML News & Alerts – Receive emails with information regarding anything affecting Pine Mountain Lake such as road closures, utility problems, fire alerts and more.

PML Amenities News – Receive emails with information about upcoming events, specials, or news regarding all PML amenities such as the lake, marina, golf course, etc.

The Grill at Pine Mountain Lake – Receive emails with information regarding happenings at The Grill. Get information on Wine Tastings, Entertainment, Special Events and more.

This program is separate from the current email opt-in program that allows you to receive PMLA governing documents and requires your signed approval. This program can be signed up for via the online system. *Get your news and alerts via email, it's eSNAP!*

24/7 RENTAL COMPLIANCE HOTLINE

IT JUST GOT EASIER TO REPORT, PROVE, AND RESOLVE NON-EMERGENCY SHORT-TERM RENTAL RELATED PROBLEMS IN REAL TIME, 24 HOURS A DAY, 7 DAYS A WEEK

1-209-231-4543

ALL PMLA HOMEOWNERS EMAIL OPT-IN PROGRAM

The Association is pleased to offer a money saving program available to all PMLA property owners. This program allows you to receive many of the documents we are required to provide to you via email. This option is important because:

COST SAVINGS – The Association is spared the expense of printing and mailing many documents to those property owners who sign up.

ENVIRONMENTAL SAVINGS – Less paper means less trash and reduced damage to the environment both in the disposal and production of paper and envelopes.

REDUCED CLUTTER – By receiving documents via email there is less paper for you to deal with.

All documents can be saved on your computer and viewed at your discretion.

TIMELY RECEIPT – Documents sent electronically are received in minutes as opposed to the days it takes for regular mail to arrive.

If these sound like good reasons to you, please sign up for the Document Email Program today using the attached form. Simply return the completed form to the Administration office at your convenience.

If you have any questions on this program please feel free to give us a call (1-209-962-8600) and we will be happy to explain the details and the advantages.

Please read the Terms & Conditions for the email opt-in program on the website, www.pinemountainlake.com under the Resources/Forms > Opt-In Email Program.

Mail form below to:
Pine Mountain Lake Association

19228 Pine Mountain Drive • Groveland, CA 95321



YES, I WANT TO ENROLL IN PMLA'S EMAIL STATEMENT AND DOCUMENT SERVICE. I ACKNOWLEDGE AND AGREE TO THE TERMS AND CONDITIONS SET FORTH ABOVE AS A CONDITION FOR PARTICIPATION IN THIS SERVICE.

PMLA Account Number: _____ Unit/Lot #: _____

Name: _____ Phone #: _____

Address: _____

Email Address: _____

Signature: _____

PINE MOUNTAIN LAKE ASSOCIATION

1.209.962.8600

BOARD OF DIRECTORS

Mike Gustafson: President
Brian Watson: Vice President
Karen Hopkins: Secretary
Craig Prouse: Treasurer
Chuck Obeso-Bradley: Director-at-large

GENERAL MANAGER

Joseph M. Powell, PCAM, CCAM-LS, CMCA, AMS

CORRESPONDENCE TO DIRECTORS

Pine Mountain Lake Association
19228 Pine Mountain Drive
Groveland, CA 95321
PMLABoard@pinemountainlake.com

ADMINISTRATION OFFICE

HOURS OF OPERATION*

Monday – Friday 8:00 AM – 4:30 PM
Closed 12:00 – 1:00 PM
Tel: 1-209-962-8600

The Pine Mountain Lake News,
established July 25, 1973,
is posted monthly for residents of
Pine Mountain Lake and vicinity by
Pine Mountain Lake Association,
Groveland, California 95321.

SUBMISSION DEADLINE

21st of the month by 4:30 PM
LATE SUBMISSIONS MAY NOT BE ACCEPTED
Visit www.pinemountainlake.com for ad rates
and submission guidelines or email:
PMLNews@SabreDesign.net

For the mutual benefit of all property owners, the Pine Mountain Lake News reserves the right to edit all copy submitted for publication. The Pine Mountain Lake News is a private enterprise, not a public entity, and as such is entitled to reject advertisements or articles in the best judgment of its editor or publisher, despite a probable monopoly in the area of its publication. Pine Mountain Lake Association is not responsible for, nor does it guarantee the accuracy of, information contained in any ad placed in the Pine Mountain Lake News. The Pine Mountain Lake News attempts to ensure that this publication is free of legal infringements and the Pine Mountain Lake Association and its contractors are not liable for copyright/trademark infringements from external advertisements and articles.

PMLA—Publisher

DAVID WILKINSON—Publishing Editor
SABRE DESIGN & PUBLISHING
Design/layout
PINE MOUNTAIN LAKE NEWS
P.O. Box 605, Groveland, CA 95321
Tel: 1.209.962.0613

E-mail: PMLNews@SabreDesign.net

MAKE PML YOUR ONE-STOP-SHOP FOR ALL YOUR GIFT GIVING!

**PICK UP A GIFT CARD FOR:
GOLF • GOLF SHOP APPAREL
& ACCESSORIES • THE GRILL
HUNTING & FISHING LICENSE VOUCHERS**

**GIFT CARDS ARE AVAILABLE AT THE
ADMINISTRATION OFFICE, THE GRILL,
AND AT THE PRO SHOP**

KEEP YOUR INFORMATION UP TO DATE

If you have moved or changed your contact information, please contact the Administration Office at 1 (209) 962-8600 to update your records. You can also update your information online by scanning the QR code. Staying connected helps us keep you informed about important updates, news, and events in our community.
<https://www.pinemountainlake.com/address-change-2/>



NOTICE

The Pine Mountain Lake News, established July 25, 1973, is created monthly for residents and property owners of Pine Mountain Lake. Members can access the PML News monthly edition online at www.PineMountainLake.com. Every month the newest edition of the PML News is posted online before the first of each month.

The PML News is emailed to and posted online for approximately 3500 PML property owner households each month. Our circulation reaches approximately 1200 full-time, resident, PML property owners and approximately 2300 "weekender," non-resident, property owners who maintain primary residence in Northern California, in Southern California, or in other states. For more information regarding the PML News, please call the PML Administration Office at 1 (209) 962-8600. We greatly appreciate your contributions but please note that the PML News fills up very quickly – often before the 21st deadline. To ensure that your submission is reviewed for publication please submit in full and as early as possible. Please remember that the PML News is limited in capacity and your submissions are reviewed on a first-come-first-served, space-available basis.

We publish all PMLA related submissions such as Board & Management Business, Clubs, Activities & Events. Where space remains, we publish non-PMLA related submissions in our "Community" section.

We do our best to provide timely news. Please visit us at the PMLA website www.pinemountainlake.com for a downloadable PDF of the News posted by the 1st of the month and a downloadable PDF list of ad rates.

GENERAL MANAGER'S MESSAGE

JOE POWELL – PCAM, CCAM-LS, CMCA, AMS GENERAL MANAGER

HAPPY NEW YEAR!

I would like to wish all of our members, volunteers and staff a very Happy New Year! 2024 was a very challenging year for our Association and we are looking forward to many positive outcomes in 2025 for our community.

PML ACCESSORY DWELLING UNIT (ADU) POLICY UPDATE

In 2024, the law changed regarding ADUs in California. As a result, we began working on an amendment to the current PML ADU policy. The draft amendment was prepared and the Board approved the publication of the draft policy for member review and feedback. Unfortunately, during this review process, the politicians in Sacramento decided once again to make additional changes to the law that goes into effect this month.

Given the new changes, the draft policy has been reviewed by Association General Counsel and she has updated and prepared a draft “amendment to the amendment”. The Board will consider this draft for publication at the January 18, 2025 board meeting. Once again, members will be given an opportunity to review the proposed amended policy resolution and provide feedback to the Board of Directors prior to its adoption.

HOA ELECTRONIC VOTING WILL BE ALLOWED IN 2025 – WE NEED YOUR EMAIL ADDRESS

Just a reminder that the Governor signed Assembly Bill 2159 in September, making electronic voting legal for California HOAs starting January 1, 2025. We are currently working with Association General Counsel on updating our election rules to reflect this change and to bring them up-to-date with current law. Members will still have the option of voting by mail if they wish.

It is important that members provide their email address if they wish to vote online. We are asking all members to update their contact information with their email addresses so that we can prepare for this new process. Members can update their contact information online at the Official PML Website at www.pinemountainlake.com.

PML TOWN HALL MEETING SCHEDULED FOR MARCH 8TH

The Board of Directors has committed to holding quarterly town meetings with members to improve communication and community engagement. The first town hall meeting is scheduled for March 8, 2025 at the Lake Lodge and the Board will be scheduling the dates for the remainder of the year at the January 18th Board meeting. Keep an eye out for future social media postings and PML News articles for more dates, times and topics.

PML STAFFING SHORTAGES SUBSIDE

As of the end of December, our department managers have all reported that they have full-staffing or close to it. For several years, we have struggled with staffing shortages and we are finally seeing a trend towards improving this metric. A full compliment of employees means better service for our members and improvements in overtime costs service and efficiency. Our employees are the life-blood of our community and we appreciate all that they do for our members.

RECREATION DEPARTMENT VERY BUSY IN 2024

Our recreation management and staff were very busy in 2024 coming up with fun new events and activities for our membership and guests. They were very creative and we look forward to even bigger and better fun in 2025. Well done team!

DSOD Dam Inspection goes smoothly
Our annual California Division of Safety of Dams inspection was completed at the end of 2024 and we passed our inspection as usual. Kudos to our Maintenance Manager, Rick Laffranchi and his staff for their hard work and diligence in monitoring and maintaining our lake dam and spillway.

Until Next Month, wishing everyone a safe and fun New Year! 🎉

PRESIDENT'S MESSAGE

MIKE GUSTAFSON – PMLA BOARD PRESIDENT

Welcome to the digital age! If you are reading this PML News magazine, you are probably doing so on your tablet, phone or computer. This simple act is saving your association about \$60,000 a year which helps keep our assessment requirement reasonable. Printing and mailing costs just kept going up, so while this change may not be to everyone's liking, it is financially the right thing to do.

The new year brings a new member survey. Many members have asked the association to build a new year-round indoor pool and activity center. This would be a new amenity and must be voted on by the homeowners. The first step is to conduct a survey asking for everyone's opinion, either way. This survey describes a couple of possible construction scenarios, all centered on a large enclosed pool. Our current pool is small and cannot be operated efficiently during the winter months. The survey will run from January through March 2025. Then the Long-Range Planning Committee will report back to the Board of Directors at a general meeting. The link to the survey, starting January 1, 2025 is <https://www.surveymonkey.com/r/PMLRecSrvy>

Please respond and let us know your opinion.

Speaking of surveys, 2025 is the year we will be conducting the PMLA member satisfaction survey. These surveys are conducted every three years to gauge member satisfaction with the amenities and services provided by your association. The association has been conducting these member surveys since about 2013 and has collected a lot of good information. The Board and PML management use the results to inform decisions on many different projects. Look for this survey later in the year, 2025.

The "Golden Mussel," is an invasive species that was discovered in the San Joaquin Delta, the San Luis Reservoir and other bodies of water in California. We are working with our lake management consultant, Dr. Stephen McCord to evaluate the risk that the Golden Mussel presents to our lake, and have followed up with the California Department of Fish and Wildlife. It has yet to be determined if the biological characteristics of our lake are conducive to the propagation of the Golden Mussel. As a result, we are taking steps out of an abundance of caution to protect our lake and our boating, water storage and hydraulic systems, and have temporarily suspended all

boat launching at the Marina.

I have often said that our association's best attributes are our employees! I am pleased to report that three more employees have earned their "Certified Community Association Manager" credential. This is a big deal; this type of credential is not easily obtained as it takes a lot of class work and studying! Congratulations to:

- **Suzette Laffranchi**, PML Community Standards Director
- **Janessa Owens**, GM Administrative Assistant and Admin Office Manager
- **Melody Wisdom**, Recreation and Seasonal Operations Manager

A member suggested that PML conduct a chess tournament. Great idea! If you're interested, please contact Melody at the PMLA office and for more information. If we see enough member interest, we will set up these events.

Lastly, while we still have a bit of winter ahead of us, the days are getting longer indicating that Spring is just around the corner! I just want enough rain to fill our lake and the regional reservoirs.

Thanks for reading our new PMLA News magazine! Let us know what you think, about anything. We appreciate and value your input. Happy New Year to everyone. Hope 2025 brings you good health and happiness! 🌱

COMPOST & ARCHERY RANGE HOURS OF OPERATION

NOVEMBER THRU MARCH TUES. – SUN. 8AM TO 4PM
WEATHER PERMITTING

APRIL THRU OCTOBER – 7 DAYS A WEEK 8AM TO 4PM
WEATHER PERMITTING

SHOOTING RANGE – TUES, THUR, SAT 9AM TO 3PM
PLEASE NOTE Hours may vary depending on weather conditions, safety concerns, or other situations beyond control. Archery & Gun Range users must check-in with compost attendant.

HOURS SUBJECT TO CHANGE WITHOUT NOTICE
Call Main Gate at 1-209-962-8615



**Pine Mountain Lake Association
Balance Sheet
As of 11/24/24**

	<u>Consolidated</u>	<u>Operating Fund</u>	<u>Reserve Fund</u>	<u>New Cap. Fund</u>
<u>ASSETS:</u>				
Cash & Equivalents	\$3,446,637.62	\$90,883.83	\$3,313,554.95	\$42,198.84
Due To/Due From	\$0.00	-\$347,438.07	\$347,438.07	
Accounts Receivable	\$1,282,612.41	\$1,282,612.41		
Less: Bad Debt Reserve	-\$374,044.34	-\$374,044.34		
Inventory	\$187,636.07	\$187,636.07		
Deposits & Prepaids	\$193,231.09	\$193,231.09		
Total Current Assets	\$4,736,072.85	\$1,032,880.99	\$3,660,993.02	\$42,198.84
Fixed Assets				
Land & Buildings	\$17,621,644.56	\$17,621,644.56		
Operating Equipment	\$6,191,107.88	\$6,191,107.88		
Vehicles	\$1,488,826.93	\$1,488,826.93		
Total Fixed Asset Costs	\$25,301,579.37	\$25,301,579.37	\$0.00	\$0.00
Accumulated Depreciation	-\$18,357,167.91	-\$18,357,167.91		
Net Fixed Assets	\$6,944,411.46	\$6,944,411.46	\$0.00	\$0.00
TOTAL ASSETS	\$11,680,484.31	\$7,977,292.45	\$3,660,993.02	\$42,198.84
LIABILITIES & EQUITY				
<u>LIABILITIES:</u>				
Accounts Payable	\$354,303.47	\$354,303.47		
Personnel Related Items	\$481,337.61	\$481,337.61		
Accrued Taxes & Liabilities	\$22,631.54	\$22,631.54		
Unearned Dues	\$365,528.29	\$365,528.29		
Other Liabilities	\$170,105.36	\$170,105.36		
	\$0.00			
Total Liabilities	\$1,393,906.27	\$1,393,906.27	\$0.00	\$0.00
<u>EQUITY:</u>				
Prior Year End Balance	\$9,334,272.73	\$5,233,453.00	\$4,058,116.27	\$42,703.46
Current Year Equity				
Income/(Exp)	\$1,998,378.63	-\$1,248,056.20	\$3,191,231.55	\$55,203.28
Asset Transfers from Funds	\$0.00	\$2,597,989.38	-\$2,542,281.48	-\$55,707.90
Reserve Expenses	-\$1,046,073.32		-\$1,046,073.32	
TOTAL EQUITY	\$10,286,578.04	\$6,583,386.18	\$3,660,993.02	\$42,198.84
TOTAL LIABILITIES & EQUITY	\$11,680,484.31	\$7,977,292.45	\$3,660,993.02	\$42,198.84

PINE MOUNTAIN LAKE ASSOCIATION
SUMMARY STATEMENT OF OPERATING FUND REVENUES AND EXPENSES
For Eleven Months Ended November 24, 2024

OPERATION OF AMENITIES	Revenues					Expenses			Budget NET COST (INCOME)	Variance Bud - Act	Variance %		
	Members' Assessments Net of Discount	User Fees	Sales, Net of Cost of Sales	Miscellaneous Income	Total Revenues	Total Expenses	Cost/(Income) Before Depreciation	Depreciation Expense				NET COST (INCOME)	
Golf Course		\$831,803	\$37,545		\$869,348	\$1,779,998	\$910,651		\$910,651	\$1,007,608	(96,957)	-9.62%	
Restaurant & Bar		\$4,655	\$795,547		\$800,202	\$1,558,515	\$758,312		\$758,312	\$672,511	85,801	12.76%	
Marina		\$477,977	\$172,492		\$650,469	\$920,700	\$270,231		\$270,231	\$325,903	(55,673)	-17.08%	
Snack Shack			\$50,796		\$50,796	\$89,462	\$38,666		\$38,666	\$37,892	774	2.04%	
Stables		\$109,182		\$20,070	\$129,252	\$476,933	\$347,680		\$347,680	\$369,822	(22,142)	-5.99%	
Recreation		\$212,161			\$212,161	\$196,222	-\$15,939		-\$15,939	\$35,197	19,258	-54.71%	
Roads & Facilities Maintenance		\$190,037		\$540	\$190,577	\$2,449,434	\$2,258,857		\$2,258,857	\$2,552,075	(293,218)	-11.49%	
PROPERTY OWNER SERVICES													
Safety		\$231,961		\$278	\$232,239	\$1,035,695	\$803,457		\$803,457	\$1,025,827	(222,370)	-21.68%	
Administration		\$306,611		\$668	\$307,279	\$2,736,248	\$2,428,968		\$2,428,968	\$2,057,796	371,172	18.04%	
ASSESSMENTS													
+		\$7,713,392			\$7,713,392	\$476,797	-\$7,236,595	\$683,769	-\$6,552,827	-\$6,894,927	342,100	-4.96%	
Totals		\$7,713,392	\$2,364,387	\$1,056,380	\$21,556	\$11,155,716	\$11,720,003	\$564,287	\$683,769	\$1,248,056	\$1,119,310	128,746	11.50%

DO YOU HAVE YOUR PIN?

Since PML is a private gated community, we want to offer our property owners a secure way to call in guests. When you become a member of PML you are assigned a Personal Identification Number (PIN) to utilize either when calling in a guest pass or using the Gate Access Internet program. This PIN identifies you to staff without you having to be present. This is a confidential number and should **not be shared**. When you call the Main Gate to authorize a guest or vendor access into PML, you will be asked for your PIN. The staff will look up the number in the computer and use it to confirm your identity before entering the guest information. You must have this number to utilize the Gate Access Internet program as well. If you do not know your PIN or have any questions, please contact the Administration Office at:

1-209-962-8600

Monday - Friday from 8 am - 4:30 pm and we will gladly supply this information to you.

PML AUTOMATIC PAYMENT PROGRAM

Taking the time to write a check for your monthly assessment payment can be time consuming and costly. You can avoid this burden and eliminate the potential for late payment charges by enrolling in PMLA's Auto Payment Program. By completing the form, which can be found at www.PineMountainLake.com under the Resources/Forms, and returning it to the Administration Office, you can have your monthly assessment automatically deducted from your checking account or charged to your credit card. This means you never have to remember to write a check and mail it each month. The peace of mind that comes with knowing your payment will always be made on time is easy to attain. We can also arrange to have any other regular payment you make to the Association (such as golf membership, horse boarding fees, etc.) paid in the same way.

For more information on this simple, effective and time saving plan please contact us at **1 (209) 962-8600**

PAY YOUR PML PAYMENTS ONLINE

Did you know you can make your payments online?

Online Bill Pay is available on www.PineMountainLake.com.

Pay via your credit card, it is quick and easy!

MONEY MATTERS

DAN SZATHMARY, CAFM – ASSOCIATION CONTROLLER

Happy New Year! Now that 2024 is behind us, we move on to our next big task, the annual audit. Next to budget time it is the busiest time of the year for our department at PMLA.

Every year we bring in an outside firm to review our records, accounts, and processes in detail; and certify the accuracy and integrity of our financial information. The Annual Report they issue includes the fully audited financial statements they put together along with details on their findings. It also includes recommendations for improvement, or areas of concern if there are any.

Audited financials are what most people are referring to when they talk about “an audit” or in some cases mis-labeled as a “forensic audit.” It is orders of magnitude more in depth than the minimum level of review

required by law. This process we perform annually involves a deep dive into all source documents and material, and carries a much higher level of liability than compiled or reviewed statements.

Though not required by law, PMLA has an audit performed, and publishes the results and fully audited financial statements every year. Though this is considerably more expensive than what is required by law, it has been our practice for many years in order to give members an extra level of assurance their money is being handled in accordance with Generally Accepted Accounting Principles.

Once the Audit is complete, we move into some other exciting projects for 2025. We are updating our Point of Sale system, so it can work more effectively with new technology, and integrate seamlessly with other systems

we are running in PMLA.

PML News has gone paperless, reducing costs and increasing the speed with which we communicate association business to the members. Moving through that initiative, we are also looking at ways to use technology to make member billing, payments, and other association business easier and more efficient for everyone.

And of course, this and much more we have planned for the New Year translates to the focus of our department: maximizing the return members get from the money they invest in our community and association.

Again, Happy New Year everyone. Looking forward to a great 2025, and beyond.

Questions or comments? Feel free to contact me anytime at Controller@PineMountainLake.com or **1-209-962-8606**. 🇺🇸

THE HOOF PRINT

KENDRA BROWN – EQUESTRIAN CENTER MANAGER

With the New Year here, it is important to look back and reflect on the good things that have happened in 2024. The moments of kindness and good should not be overlooked!

Here at the Equestrian Center, we are grateful to our community both near and far for the assistance over the last year.

We are also grateful to our boarders, guests and staff, who have put in the work to keep the horses secure and well cared for throughout the year. Our barn wouldn't be the same without them.

Because of all their hard work, this next year is going to be a good one.

Thank you to everyone that came out and visited Santa and walked through Christmas Tree Lane at the barn. It was fun to see the lights up and the joy it brought families looking at them. Congratulations to our Christmas Tree Lane Winners; **1st Place-** Tenya School Art Club; **2nd Place-** PML Pool Gang; **3rd Place-** Tioga FFA, and a shout out to ROOFBB for having the only surviving tree after the wind storm that came through and wiped out the decorations and trees. We look forward to

making next Christmas bigger, better and a little less windy.

The year of 2025 has lots in store for us here at the barn and we are all looking forward to every bit of it. Here's to more good news in the future and a happy New Year! Wishing everyone a safe and happy wintertime.

Kendra Brown
Equestrian Center Manager
13309 Clifton Way
Office: 1-209-962-8667
stables@pinemountainlake.com 🇺🇸

CHRISTMAS TREE LANE

AT THE PML STABLES
AND THE WINNERS ARE...



1ST - TENAYA ART CLUB



PINE MOUNTAIN LAKE
EQUESTRIAN CENTER



2ND - PML POOL GANG



3RD - TIOGA FFA

**Congratulations to all and Thank You for participating.
See you all next year!**

Holiday House Decorating Contest AND THE WINNERS ARE...



**1st Place Winner is
Unit 4 Lot 221**



**2nd Place Winner is
Unit 4 Lot 253**

**Congratulations to all the participants
and see you all next year!**



LETTERS TO THE EDITOR

LETTERS TO THE EDITOR RECEIVED	1	DEFERRED TO NEXT EDITION BY	
DENIED BY EDITORIAL COMMITTEE	0	EDITORIAL COMMITTEE	0
Exceeds 250 word maximum	0	DENIED BY BOARD OF DIRECTORS	0
Content	0	DEFERRED TO NEXT EDITION BY	
Not a property owner	0	BOARD OF DIRECTORS	0
"THANK YOU" LETTERS RECEIVED*	0		

** Thank you's do not require editorial committee approval*

Submit Letters to the Editor by sending to "Editor, PML News"
 Mail: 19228 Pine Mountain Drive, Groveland, CA 95321
 Email: PMLNews@sabredesign.net

**PLEASE NOTE THAT ALL LETTERS
 APPEAR IN THE ORDER THEY WERE RECEIVED BY THE PML NEWS**

The Pine Mountain Lake News welcomes letters and articles for publication provided they meet the criteria established in the current PMLA Editorial Policy (See excerpt below – entire policy on file at the Administration Office). Letters must be limited to 250 words, typewritten using upper and lowercase letters or neatly printed (no all-capital material) and signed with name, mailing address, PML unit/lot number, and day/evening telephone numbers by a property owner in good standing. **LETTERS MUST BE RECEIVED BY THE EDITOR BY THE 10th OF THE MONTH.** Letters deemed by the Editorial Committee to be improper will not be accepted. Readers are advised that **THE OPINIONS EXPRESSED IN THESE LETTERS ARE THOSE OF THE INDIVIDUAL AUTHORS, NOT OF THE PMLA, THE PINE MOUNTAIN LAKE NEWS, NOR THEIR EMPLOYEES.**

CONCERNED ABOUT RISING COSTS

Increasing insurance & HOA dues are making the dream of owning a home here in PML increasingly fading away. There are so many things our PML board could do to help but instead continue to add to our financial difficulties. The Recall was an enlightening to how many homeowners are asking for change. 601 to be exact owners asked for new leadership. A new year brings yet again a huge increase in HOA fees and what we are told when asked why year after year, is because "things cost more" so our immediate thought should be ok, well what is our board doing to offset the things that cost more? It is a just question isn't it? We

do not need more "things or amenities" The reason we bought here was because of the Mountains, less people, less congestion and a slower pace of life. Stop trying to make this for the rich and famous. There are plenty of other areas for that. I look forward to when we can get new thinking, new perspectives, and fresh ideas going forward. Remember at some point new buyers are not going to want to buy here because the high cost of HOA dues. They will buy elsewhere where dues are significantly lower and do not increase every year. Happy New Year, please now open up your wallets again!

Danny & S. Maloney
 Groveland Ca

**SPEED
 LIMIT
 25**

**SLOW DOWN
 BEWARE OF SLICK ROADS
 WATCH OUT FOR OTHERS
 PLEASE DRIVE SAFELY**

*Happy
 New Year*

From the
 Pine Mountain Lake News

Buds
HEATING & AIR
 SERVICE • INSTALL • SALES

Lic#1050993

Office: (209) 857-0438
 Budsheatingandair.com
 19431 Village Drive, Sonora, CA 95370

SURVEY TIME - WHAT'S YOUR OPINION?

PML LONG RANGE PLANNING COMMITTEE

The PML Member survey regarding a potential new pool and activity center is now live. Please go to <https://www.surveymonkey.com/r/PMLRecSrvy>, fill out the survey and let us know your opinion.



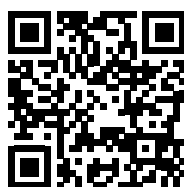
Building a new pool and activity center would be a big project, so member input is vital.

If you would prefer a non-computer process, a hard copy version is available at the Administration office.

The survey starts in January and runs until March. Please let us know your opinion!

GOVERNING DOCUMENT ENFORCEMENT ACTIONS NOVEMBER 2024

Courtesy Notices	19
Notice of Non-Compliance	6
Final Notice of violation	4
Fines Assessed	11
Member Service	676



PML Website



PML Facebook Page

BE SURE TO LIKE OUR PMLA FACEBOOK PAGES:

Facebook.com/PineMountainLakeCA

Facebook.com/PMLARecreation

Facebook.com/PMLMaintenanceDept

Facebook.com/PMLGrill

Facebook.com/PMLAEquestrianCenter

PML SAFETY REPORT

	1st Qtr	2nd Qtr	3rd Qtr	NOVEMBER	4th Qtr	YTD
Guest Passes Issued	2,246	4,192	6,058	1,380	2,466	14,962
Vendor Passes Issued	989	1,520	1,517	545	1,104	5,130
Temporary Resident Passes Issued	2,123	5,593	7,041	1,044	2,487	17,244
Vehicles Admitted	27,669	48,415	49,179	11,475	24,028	149,291
Vehicles Refused Entry	689	1,307	1,721	257	626	4,343
Phone Calls Received	6,079	8,185	8,432	2,155	4,495	27,191
Residential Alarm	13	10	9	4	5	37
Animal - Loose	24	28	17	17	36	105
Animal - Impounded	8	12	10	1	5	35
Animal - Dead/Injured	6	27	35	10	20	88
Animal - Disturbance	1	4	7	2	3	15
Patrol Assist	308	465	582	180	350	1,705
Public Assist	22	31	25	19	29	107
Welfare Check	6	6	2	2	3	17
Transport	8	6	-	-	-	14
Traffic Hazard	3	1	5	-	-	9
Traffic Control	3	2	-	-	-	5
Excessive Speed/Reckless Driving	1	9	8	4	6	24
Gate - Tamper	-	-	3	-	-	3
Gate - Follow Through	23	41	67	12	27	158
Gate - Malfunction	18	23	8	4	9	58
Gate - Struck by Vehicle	12	21	11	3	7	51
Control Burn Reported	164	77	-	33	33	274
Fire Safety - Smoke Complaint	4	4	5	1	1	14
Hazard - Tree Down	6	1	2	-	-	9
Residential Disturbance	6	5	4	-	-	15
Amenity Burglary	1	-	1	-	-	2
Residential Burglary	1	1	1	-	-	3
Grand Theft	1	-	-	-	-	1
Petty Theft	-	2	2	-	1	5
Trespassing	2	7	9	-	3	21
Vandalism	2	1	1	2	2	6
Property Damage - PML	1	4	3	-	-	8
Property Damage - Resident	3	-	1	-	-	4
PML Regs Violations Resident	1	3	6	-	1	11
PML Regs Violations Guest	-	-	4	-	-	4
Vehicle - Citation Issued	4	4	9	8	12	29
Vehicle - Accident PML	1	1	4	-	-	6
Patrolling Unit	3,749	2,922	3,206	1,439	2,715	12,592
Amenity Security Check	6,211	6,170	6,474	2,568	4,888	23,743
Residence Security Check	543	398	448	179	315	1,704
Monitoring Tennis Courts	-	-	-	-	-	-
Weapon Violation	-	-	1	-	-	1
Fixed Post	7	3	5	2	3	18
Courtesy Notice Issued	37	39	56	15	36	168
All Other Fees Collected	\$119,104	\$300,257	\$365,282	\$53,568	\$113,102	\$897,744.92

FIRE SAFETY

JOE MILANI – FIRE SAFETY COORDINATOR

On behalf of The Fire Safety Team, we would like to wish all Pine Mountain Lake residents a Happy New Year! While considering New Year’s resolutions, we should also include protecting our home’s value by preventing fire hazards and damage caused by debris, often found on roof tops and gutters. While maintaining your property this winter, don’t forget fire prevention is a year-round effort. I think we can all agree that PML is a wonderful place to live, so let’s make it a safer place too.

The winter months are the best time to reduce the fuel load on your property. The Fire Safety Team has been hard at work and we want to thank the Pine Mountain Lake Maintenance Team and the community for stepping up and supporting the effort in fire prevention. Get started today, take the first steps in becoming fire safe. **Please give us a call to schedule a courtesy fire safety inspection.**

Please remember to test your smoke and

carbon monoxide detectors once a month and replace any faulty alarms or low batteries immediately. Every year home owners make “home improvements,” this year I would encourage you to consider strategically placing some fire extinguishers in the home, garage, or other out buildings. When installing fire extinguishers it’s important to consider placement. Fire extinguishers that are placed correctly can be accessed more quickly to help control a fire until the fire department arrives. Two key factors for locating fire extinguishers are accessibility and visibility. Below is a quick tip from the NFPA on how to use a fire extinguisher.

Use a portable fire extinguisher when the fire is confined to a small area, such as a wastebasket and is not growing. Be sure that everyone has exited the building and that someone has called the fire department. According to the NFPA the best way to learn how to operate a fire extinguisher is to remember the word **PASS**:

- o **P**ull the pin. Hold the extinguisher with the nozzle pointing away from you, and release the locking mechanism.
- o **A**im low. Point the extinguisher at the base of the fire.
- o **S**queeze the lever slowly and evenly.
- o **S**weep the nozzle from side-to-side.

Lastly, let’s all hope for more rain this year and remember that fire safety inspection and re-inspections will continue in Pine Mountain Lake. Remember a fire safe community begins with you! If you would like an inspection of your property, or you are looking to educate yourself more, our fire safety team would love to help. If you have any questions or concerns regarding fire safety or PMLA burn permits, you can contact Amanda Birmingham at **1-209-990-5263** or email her at inspector@pinemountainlake.com.

I can be reached at **1-209-990- 5260** or email j.milani@pinemountainlake.com 🇺🇸

FIRE SAFETY REPORT YTD AS OF 12-10-2024

	YTD
Courtesy Notices	695
Notice of Non-compliance	323
Final notice of violation	100
Properties with fines assessed.....	20
Total fire safety inspections performed	2,708
Real-Estate request for inspection	53
Tree Removal Requests	99
Phone calls Received.....	1,292
Phone calls made.....	1,519
ECC inspections performed	472

HOT OFF THE GRILL

ANDREA WILSON – FOOD & BEVERAGE DIRECTOR

HAPPY NEW YEAR from all the employees at The Grill and 19th Hole Lounge!!! We hope everyone had a great December. Thank you to those who rang in the New Year with us at our New Years Eve celebration.

2025 is going to be great year for The Grill at Pine Mountain Lake. We have many fun events, live music, tasty cocktails,

and wonderful food planned for the year. Be sure to check out our Facebook page for more information and details on events, you can also sign up for E-Snap to receive email updates from The Grill and 19th Hole Lounge.

If you are looking for the perfect space to book a party, wedding, luncheon, or meeting The Grill is the place for you! Our banquet

space seats up to 64 people and we offer many different dining options from plated meals to buffet style. Contact our Event Coordinator - Ashlee Martinis for more information.

Don't forget, The Grill and 19th Hole Lounge is open 7 days a week! Lunch is served daily and dinner is served Wednesday – Sunday. For more information, please call **1(209) 962-8638**. 🍷

ADMINISTRATION

STORING SANTA

ASHLEY HENDERSON – ARCHITECTURAL CONTROL SPECIALIST

Did you break down and buy that life size animatronic Santa Clause, sleigh, and ALL nine reindeer last month, only to realize come January 1st that you have no place to store them until next Christmas? Unless you are willing to have some festive, but ultimately unhelpful roommates, it may be time to consider a shed. Or maybe a garage to fit that sleigh, along with a more practical mode of transportation? Or maybe an entire

workshop of your own to store and prepare the Christmas spirit? Whatever the case may be, the Environmental Control Committee can help make your sugar plum dreams a reality.

Please submit your shed, garage, workshop online at: <https://www.pinemountainlake.com/ecc-project-submittal-process/> The Committee meets every two weeks, and will need: a plot plan, shed, garage or workshop plans, materials and finish color(s), and all applicable Tuolumne County permits.

Please note that sheds must be located next to or behind the primary dwelling, and that flat roofs are not approvable on any building. For more details regarding specific construction standards, please do not hesitate to reach out at ecc@pinemountainlake.com or **1-209-962-8605**. I would be more than happy to help you keep your ever-growing Christmas village safely tucked away until Mariah Carey comes back out of hibernation later this year. 🎄

ADMINISTRATION

NEW YEAR'S "RESOLUTION"

CARRIE HARVEY – COMMUNITY STANDARDS SPECIALIST

Happy new year! I hope everyone had safe, and happy holidays. As we begin 2025, and everyone is focusing on what their new year's resolution should be, maybe yours is to put away all those decorations and spruce up around your home. If so, let us focus on your **CC&R's, Article VIII, Section 10, Storage. Storage of personal property on any Lot shall be entirely within enclosed storage areas.** This means, that all personal or household items must be kept out of view

of the street and neighboring lots.

If you are cleaning out that garage, those closets in your home, or wondering where to make room for your shiny new gifts, remember your neighbors do not want to look at your old stuff. While you are waiting to haul off your old items, please make sure your discard pile is kept in an enclosed storage area. If you have outdoor things, like hoses, garden tools, power tools, etc., or anything that can be put in your garage, or approved shed, please do so. Keeping your household or personal items laying around

the outside of your home, in your yard, or near the street takes away from the beauty of your neighborhood. We strive to keep the aesthetics of Pine Mountain Lake, including landscaping, color schemes, and overall cleanliness consistent. If you have any questions on what you may or may not keep on the outside of your home, please feel free to reach out to us here in the Community Standards Dept at **1-209-962-1242** or compliance@pinemountainlake.com and we will be happy to assist you. Have a great January! 🍷

DINNER HOURS
WED & THURS 5-8PM
FRI & SAT 5-9PM
SUNDAY 5-8PM



FOR RESERVATIONS
CALL THE GRILL
AT
1.209.962.8638

WINTER COMFORT DINNER SPECIALS

EVERY WEDNESDAY

CHICKEN POT PIE 25

Chef Rauls rich and creamy chicken pot pie with a flaky crust, served with choice of garden salad or caesar salad.



EVERY THURSDAY

CLASSIC MEATLOAF 25

Classic meatloaf served with mashed potatoes, brown gravy, and vegetables.

EVERY SUNDAY

CHICKEN FRIED STEAK 25

Chicken fried steak served with country gravy, mashed potatoes, and fresh vegetables.

WELCOME TO THE
Hidden Jewel of the Foothills
**PINE MOUNTAIN LAKE
GOLF & COUNTRY CLUB**

12765 MUELLER DRIVE • GROVELAND, CA. 95321

Championship Golf Course



Beautifully Manicured Greens



Stunning Vistas & Surroundings



Mountain Golf



at its Finest!



www.PineMountainLake.com

1-209-962-8620

FROM THE FRINGE

MIKE COOK – PGA HEAD GOLF PROFESSIONAL

HAPPY NEW YEAR

The Golf Shop is open 7 days a week from 8:00am until 5:00pm and our staff and I are here to assist you in any way we can. Please call us if you have any questions or need to make a reservation for golf at **1-209-962-8620**.

UPCOMING EVENTS

EVENT	DATE(S)
Ladies 9-Hole Golf Club	Weekly Play Day Thursdays
Ladies 18-Hole Golf Club	Weekly Play Day Thursdays

DRIVING RANGE

As of January 1, the Driving Range will be open from 8:30am until 3:00pm.

WINTER 11:00AM SHOTGUNS

Our winter 11:00am shotguns will continue until March 10, 2025. Call the Golf Shop to reserve a spot in a shotgun start. PML Property Owners can make a golf reservation up to 14 days in advance.

ANNUAL GOLF MEMBERSHIPS

If you are going to purchase an Annual Golf Membership for 2025, please come to the Golf Shop to submit your application and make a payment. If you have any questions, please call the Golf Shop.

GOLF SERVICES (LOCKERS, BAG & PUSH CART STORAGE)

If you have a locker, bag storage or push cart storage, please come to the Golf Shop to submit your application for 2025 and make a payment. If you would like to rent a locker or store you bag or push cart, there is space available. Call or come to the Golf Shop for more information or an application.

NEW PINE MOUNTAIN LAKE GOLF WEBCAM

On the pinemountainlake.com website we now have a live webcam that looks down the 10th hole. Click on the Amenities tab, then go to and click on the 18 Hole Championship Golf Course tab, then scroll down to and click on the Golf Course Webcam. You will be able to see the live conditions at the Golf Course.

HOLE-IN-ONE'S

Congratulations!!! To the following Pine Mountain Lake Golf Club Members who made a Hole-In-One at Pine Mountain Lake in 2024:

Paul Purifoy	May 1	Hole #17	158 Yards
Matt Alvarez	July 5	Hole #14	143 Yards

CALLAWAY GOLF CLUB TRIAL SETS

Callaway PARADYMI Smoke golf clubs are NOW ON SALE in the Golf Shop. We have trial sets that you can take to the range

or out on the Golf Course. For more information, call or come in to the Golf Shop. **We should have the NEW Callaway ELYTE line of clubs available for testing early in 2025.**

SOUTHERN VALLEY SENIORS

If you are a PML Property Owner, a Member of the PML Men's Golf Club and are 50 years of age and above, you qualify to join the PML Southern Valley Seniors (SVS). The SVS play home & away events with other Golf Courses in the Southern Valley, such as Turlock CC, Oakdale CC & Spring Creek CC, to name a few. If you are interested call the Golf Shop and we will put you in touch with the SVS PML Captain.

PUNCH CARDS

Pine Mountain Lake Association Property Owners can save up to \$6.00 per round by purchasing a Punch Card in the Golf Shop. There are 9-Hole & 18-Hole Punch Cards available. For more information call or come into the Golf Shop.

NEW PINE MOUNTAIN LAKE PROPERTY OWNERS

If you are a new Pine Mountain Lake Property Owner and you are interested in getting acquainted with other Property Owners who play golf, call the Golf Shop 1-209-962-8620 and we will let you know what golfing groups you may be able to join or what golf activities are planned for the year.

MEN'S & LADIES GOLF CLUBS

If you are interested in joining the Men's or Ladies Golf Clubs, you can call the Golf Shop **1-209-962-8620** and we will give you the information you need. Applications are available in the Golf Shop. The Men's Club has a website (www.pmlmgc.com) that you can visit to sign-up online for your membership (see Men's Club eligibility rules) or to print an application. Once you are a Men's Club Member, you can sign-up for tournaments online.

PROPERTY OWNER ANNUAL GOLF CART RENTAL AGREEMENT

Every person who drives a golf cart on the course, is required to sign a golf cart rental agreement at the time of registration, before they can drive a golf cart. **PML Property Owners sign the agreement one-time and that covers the entire year.** If you have not signed your agreement you can go to the PML website (www.pinemountainlake.com) and fill it out and sign online or you will be asked to sign the form when you register in the Golf Shop. Click on amenities, then click on golf and you will see the agreement with other forms available. If you have any questions, please call the Golf Shop **1-209-962-8620**.

Continued on next page

CARE OF THE GOLF COURSE

TAKING CARE OF THE GOLF COURSE IS EVERYONE'S RESPONSIBILITY. PLEASE DO YOUR PART!

Replacing Divots – PML is a **DIVOT FIRST** facility, that means that if the divot is intact or even a portion of the divot is intact, we want you to replace the divot first and press the divot down firmly with your foot. When an intact divot is replaced, it will begin to root right away but a mulch filled divot will take weeks to fill in. If the divot hole is not totally filled in by the divot that you replaced then fill the rest of the hole with mulch and press down the divot firmly with your foot. If the divot is not intact, then fill the divot hole with mulch and smooth the mulch with your foot so it is level with the ground.

Repairing Ball Marks – This is one of the major negatives in our great game; players either do not know how to repair ball marks correctly or don't even attempt to repair them. Here is the correct way to repair a ball mark:

Insert the divot tool just outside the edge of the ball mark, use the divot tool to mend in the outside portion if the ball mark towards the middle. Then use your putter to tap down the repaired turf. If a ball mark is repaired properly, you will not even be able to tell that there was a ball mark. NEVER PULL

UP THE MIDDLE OF THE BALL MARK.

Raking Bunkers – We are back to normal procedures concerning bunkers. PLEASE make sure that you rake the bunker after you have hit your shot.

Golf Carts – Driving golf carts on the fairways has a negative effect on turf conditions over time. PLEASE use the 90-degree rule posted in each golf cart in order to minimize the cart traffic on the fairways.

PINE MOUNTAIN LAKE NEW GOLF APP

Pine Mountain Lake Golf & CC will be transitioning to a **NEW APP** in 2025, you will be able to download it **FREE** from the app store. Look for more information to follow. The **NEW APP** will feature many of the existing features on the current app, such as:

- Golf course GPS
- Players can measure their shots
- Golf course hole by hole flyover
- Interactive scorecard
- Score posting
- Player profile and automatic stats tracker
- Food & beverage menus and ordering
- Receive notifications concerning special events
- Weather information 🌤️

ADMINISTRATION

TEE TO GREEN

ROB ABBOTT – GOLF COURSE SUPERINTENDENT

With 2024 finally in the history books, we here at Golf Maintenance are looking forward to a successful 2025 season. I'm amazed to say such a thing as 2025. How can that be? The seasons for those of us working outdoors seem to just fly by. I myself have seen 34 winter transitions here at PML, and seems like yesterday in many ways.

Through the winter months the Golf crew stays very busy with off season projects. This season our leaf drop got off to a slow start but we are in the thick of it now and will be finishing up in early January. Tree trimming will be one of the big projects we tackle during and after the leaf drop. We will also be tackling some drainage projects, working a few bunkers and adding sand. These types of off-season projects are essential in providing great conditions during the growing season. Projects such as these are done in the winter months when we are not on strict mowing cycles and generally have fewer rounds of golf.

I will be busy over the next few months building out programs for next season. Mapping out product applications detailed through October of 2025 such as all Fertilizer applications, fungicide applications, pest management and horticultural activities that are scheduled alongside a rigorous greens

topdressing program. Communication in my department is very important, I will post all applications being made on a calendar and on our daily jobs board. Also posting for all employees will be our upcoming course events, consisting of all tournament play.

Staff and I will also be working on a seasonal order of golf related products that we need to carry us through 2025, such as flags, flagsticks, flag cups, tee towels ball washer solution, pond dye, driving range and putting green accessories etc. I try to make all of these types of purchases early to take advantage of early order program discounts.

Maintaining the golf course is a labor intensive and a consistently changing task. Throughout the year, my dedicated staff and I face a wide range of challenges, and each of them demand innovative strategy and planning. From extreme weather conditions to turf health and playing conditions, we must adapt to each season's demands to ensure the course remains in top condition for all of our members and guests. My dedicated staff plays a pivotal role in ensuring that the golf course not only meets but exceeds the expectations of players, providing an exceptional experience with every round. We hope to have an amazing 2025 season, so come out and enjoy one of the best courses in the region. 🌤️

FROM PMLA SAFETY COMMITTEE

BOB ASQUITH – PMLA SAFETY COMMITTEE

The Pine Mountain Lake Safety and Security Committee is a standing committee authorized by the PMLA Board of Directors to inform its decision making and promote its mission. The Committee meets every month.

Join Our Committee Meeting:

Members may attend our committee meetings.

Our next meeting is February 12th at 9am via Zoom. Please email SafetyComm@pinemountainlake.com to obtain your invitation.

Your Safety Committee continues researching and making recommendations to the BOD during 2025 on the following topics:

- ✓ PML Safety Committee with Groveland Area CERT will be presenting Wildfire Preparedness Workshops during the first half of 2025. Look for announcements in Social Media.
- ✓ PML Safety Committee will be offering First Aid/AED/CPR classes in the first half of 2025.
- ✓ Continued discussions about PML street address signs. PMLA has requirements and the Fire Department has suggestions. Further, Tuolumne County has issued requirements for all Rental Properties. The committee will be bringing those together in a plan.
- ✓ Continue to locate and articulate measures to reduce speeding within PML.

We are open to other suggestions that will make our Pine Mountain Lake community safer for all members, guests, and renters. Please direct comments to our email above.

Firewise Communities—This national program continues to grow with the support of NFPA and the Tuolumne County Fire Safe Council. In PML there are dozens of new participants added. Contact the Safety Committee (email address below) for details.

- You can start a Firewise community and

make your area SAFER. It is easy.

- SAVE on your Homeowners Fire Insurance.

Emergency Evacuation—These maps are approved and ready to use. Maps show the routes out of PML and the major evacuation routes away from Groveland. Additional emergency information can be found at <https://www.pinemountainlake.com/emergency-information-and-resources/>

Evac Maps are on the PMLA website. Download & print your copy.
<https://www.pinemountainlake.com/.../PML-Evacuation-Maps.pdf>

Please email comments to: SafetyComm@pinemountainlake.com

There have been significant emergencies in Pine Mountain Lake's recent past. The Flood of 2018 and the Moc Fire evacuation to name two. During these emergency times, effective and timely communication is paramount to preserving life and property. The PMLA Safety Committee is partnering with local Ham Radio operators, Groveland CERT and the Tuolumne County Office of Emergency Communications (OES) to provide a reliable and comprehensive radio backup system. In the weeks ahead, we will be holding Town Hall type meetings to explain how to participate. Here are some preliminary concepts.

WHAT COULD POSSIBLY GO WRONG: These are just some of the things.

- Power is out.
- The Internet is not working.
- Your landline is down.
- The connection carrying Land Lines, Cellular voice, text & data, Internet service fails.

HOW WILL YOU GET INFORMATION: These are the kinds of information you will need.

- First – General Awareness of Possible Emergency
- Next – Specific Alert Comes (Emergency Notifications)
- Share – Who Else Needs to Know (someone off the Hill)

EMERGENCY NOTIFICATIONS: Be ready to use all of these, Sign up for all.

- Tuolumne County Alert System
 - o Landline call
 - o Text message to Cell Phone: All of local family, some family off the hill.
- PG&E Alert System
- Posts to Social Media – These Trusted Sources ONLY
 - o Office of Emergency Communications (OES) Sheriff
- Radio Stations – Do you have a radio? Batteries? Which Station?
- Email – How will you get critical info during power outage?
 - o Does your internet work during a power outage?
 - o What is your backup plan for email?
- Call from Relative

SIGN UP FOR ALERTS: This most important to be complete.

- Which Numbers
 - o Your landline
 - o Your cell phone
 - o Your family's cell phones (Someone off the hill)
- Trusted Sources Alerts
 - o Tuolumne County Emergency Alerts
 - o PG&E Alerts

The Pine Mountain Lake Safety and Security Committee is a standing committee authorized by the PMLA Board of Directors to inform its decision making and promote its mission. The Committee meets every month.

Please email comments to: safetyandsecuritycommittee@pinemountainlake.com 🌲

RECREATION UPDATE

MELODY WISDOM – RECREATION AND SEASONAL OPERATIONS MANAGER, CCAM

CELEBRATING COMMUNITY, JOY, AND LOOKING AHEAD TO 2025 AT PINE MOUNTAIN LAKE

As we close the chapter on 2024, Pine Mountain Lake extends a heartfelt thank-you to everyone who made this year truly special. PML thrives on joy and togetherness, and this holiday season was a glowing testament to that spirit.

The Equestrian Center lit up the Sonora Christmas Parade with a festive display that captured the perfect blend of holiday magic and cheer, delighting spectators of all ages. Back at PML, the celebrations continued with the sparkling Holiday House Contest, Christmas Tree Lane, and the beloved Santa at the Stables. Families had the chance to visit Santa in his sleigh, take photos, and share their Christmas wishes, creating memories that will last a lifetime.

A special thank you goes out to all those who participated in the Holiday House Contest and Christmas Tree Lane. Your creativity and holiday spirit transformed PML into a winter wonderland, with lights and decorations so magical they could warm even the Grinch's heart.

As we look ahead to 2025, we're excited for even bigger and brighter events. Here's to another year of community, fun, and cherished memories. From all of us at PML, thank you for being part of what makes this place so special. Cheers to a joyful and unforgettable 2025!

If you're looking for something to do between now and May, take advantage of the amenities available:

Tennis and pickleball courts are open.

The shooting range is ready for use.

Playgrounds provide fun for the little ones.

The Stables are open and offer an excellent opportunity to learn horseback riding. Call **1 (209) 962-8667** to make your reservation today!

Here are some highlights for 2025 (more information will follow):

Starting in January: Register your vessel(s) online. Go to pinemountainlake.com, click on Amenities, select Marina, and find the 2025 Boat Registration Link.

Seasonal jobs will be posted in early March.

Job Fair in mid-March.

Trail rides begin at the end of April (weather permitting).

Starting May 1st: Boat launching opens.

Fish plant scheduled for mid-May.

Seasonal amenities (Marina Store, Lakeside Café, and Swim Center) open on Memorial Weekend.

May 24th–26th: PML Roping in the Pines event.

The Independence Day Celebration is on Saturday,

July 5th.

Fishing derby and Free Fishing Days for 2025 are Saturday, July 5, and Saturday, August 30.

Seasonal amenities close on October 31st.

Holiday House Contest, Christmas Tree Lane and Santa at the Stables return in December.

We are excited about what 2025 holds for all of us at PML. Thank you for being part of our community and helping us create a year full of memories, fun, and joy.

Here's to a wonderful New Year and a safe, happy wintertime!

For more information, contact Melody Wisdom at **1 (209) 962-8604**. 📞



A CELTIC CRAFTSMAN BUILDERS

Craftsmanship that can be counted on!
Punctual, Reliable, Honest, and Dependable!

GENERAL CONTRACTOR #962605 • PHONE #209-459-2936

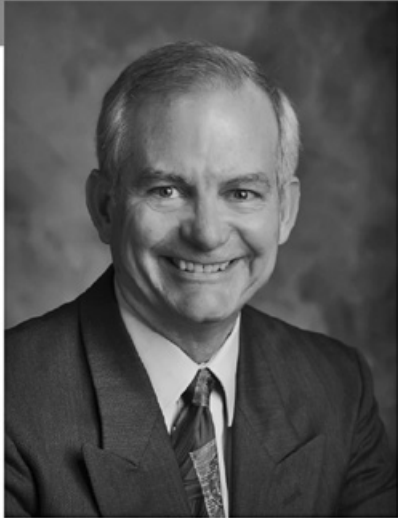
COMPLETE HOME CONSTRUCTION REPAIRS, REMODELS

- Kitchen/bathroom repair/remodel
- Doors hung, re-hung, installed & removed
- Finish carpentry
- Windows installed, removed, replaced, upgraded

- Wood decks installed, repaired
- Wood fences constructed, installed & repaired
- Wood gates, built, repaired, replaced
- No job is too big or small
- 35+ years' experience
- Competitive rates

209-459-2936





PAUL S. BUNT, ESQ.
ATTORNEY AT LAW

ESTATE PLANNING
PROBATE
REAL ESTATE
BANKRUPTCY
ELDER CARE

209.962.6778

Mountain Leisure Center, Groveland
appointments available in Sonora and Lake Don Pedro

2024 HOLIDAY EXPRESS

MIKE COOK – PGA HEAD GOLF PROFESSIONAL

The Holiday Express is an event where Pine Mountain Lake Association Property Owners, whose home borders the golf course, decorate their property with Christmas lights and decorations. Then on dedicated nights, lighted golf carts filled with holiday travelers, drive around the golf course to view the festively decorated homes. This year's dates for the golf cart tours were Friday December 13 and Saturday December 14. On Friday night approximately 140 holiday travelers, armed with hot cocoa and handwarmers, made the 40-minute tour around the golf course and on Saturday approximately 160 travelers braved the wet and chilly conditions to enjoy the tour. Tioga

High Students volunteered their time to prepare and serve cookies and hot cocoa to the travelers. Good times were had by all and the Christmas spirit was in the air.

In addition, there was a contest to see whose property displayed the best decorations. There were 6 places awarded in this year's contest. After the votes were tabulated, here are the 2024 Holiday Express Home Decoration winners:

1st Place Will & Elisa Hoppner

\$100 Country Club Gift Card

2nd Place Frank & Karen Jablonski

\$80 Country Club Gift Card

3rd Place Matt & Susie de la Mott

\$60 Country Club Gift Card

4th Place Paul & Judi Kuhn

\$40 Country Club Gift Card

5th Place Ted & Kathleen Holzwart

\$40 Country Club Gift Card

6th Place Gary & Ivonne Deckard

\$40 Country Club Gift Card

A special thanks to all those who volunteered their time and efforts to make this event a success. It is our plan to continue and expand this event for years to come so if you live on the Golf Course, please decorate the Golf Course portion of your property next December. Look for information and dates concerning the 2025 event next fall.

Thank You! 🇺🇸



www.djsellsdirt.com

Buying or Selling?

Personalized Not Franchised

209-985-7633

D.J. Kraft
REALTOR



Born and raised in Groveland and an experienced, local expert. My childhood was spent on the lake and riding my horses at the Pine Mountain Lake stables while my young adult years were spent buying, developing and adventuring in real estate. I LOVE my hometown and it's surrounding areas. It would be my pleasure assisting you with buying or selling. Let's work together!





12717 Cresthaven Dr

Popular Vacation Rental

3 Bd, 3 Baths, 2,698 sq ft. Built 2006. Knotty Pine Ceilings. Large Bonus Room Downstairs with Coffee/Snack Counter. Newer Deck and Stamped Concrete Patio Below. Check This One Out.

Only \$629,000

Call: Ron, 209.206.0007

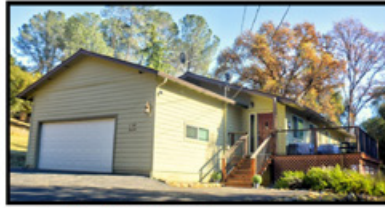


Well Maintained Home

MLS# 20241755

20409 Pine Mountain Dr

3/2 2 Car Garage, 1,488 Sq Ft



New floors, new double pane windows, fresh paint, new interior doors, primary bathroom has new shower and vanity. New garage door and garage door opener.

Call: Tish, 209.985.0216

Only \$364,500

Over 13 ACRES

MLS# 20241608

19185 Timber Ridge Rd **In the Heart of Groveland**



- Multiple secluded building sites
- Zoned RE-2
- Build an additional dwelling

Call Ron

Only \$185,000

Golf Course Home

MLS# 20240870

19430 Reid Circle



4 BD, 2 Bath, 1,536 sq ft. Home Recently Updated with Stainless Appliances. Open Floor Plan with Pine Ceilings. And Views of the Golf Course

Only \$469,555

Call: Tish, 209.985.0216



FOR AN INSTANT HOME VALUE ESTIMATE



Ron Connick
REALTOR
DRE #00575067
209.206.0007



Tish Fulton
REALTOR
DRE #0076019
209.985.0216

18727 Main St, Groveland Ca 95321 | 209.962.7765

© BHH Affiliates, LLC. An independently owned and operated franchisee of BHH Affiliates, LLC. Berkshire Hathaway HomeServices and the Berkshire Hathaway HomeServices symbol are registered service marks of Columbia Insurance Company, a Berkshire Hathaway affiliate. Equal Housing Opportunity. Information not verified or guaranteed. If your home is currently listed with a Broker, this is not intended as a solicitation.

PINNELL'S CARPET ONE FLOOR & HOME

THANK YOU FOR VOTING US BEST OF THE MOTHERLODE SINCE 2005!



Waterproof Flooring, LVT, Laminate, Vinyl, Hardwood Tile, and Hunter Douglas Window Coverings.

209.736.8077 263 S. Main St. Angels Camp, CA

209.532.1696 12900 Mono Way Sonora, CA

Don't forget to ask us about our special financing options!

www.pinnellscarpetone.com

FREE
Furniture Moving
Call to set up your free estimate!
Thanks for Voting us 2024 BEST Window Covering and Flooring Store!!

Pinnell's Carpet One

Sonora 209.532.1696

Angels Camp 209.736.8077

*See store for details.



PINE MOUNTAIN LAKE REALTY

An Agent Owned Company 18919 Ferretti Road • PO Box 738 • Groveland CA 95321 • 209-962-7156 • www.pmlr.com



Barry Scales
Broker/Owner
209.484.7123
DRE#00451887



Lynn Bonander, GRI
Realtor®
209.484.7156
DRE#00683485



Val Bruce, GRI
Owner/Broker Assoc.
209.768.7368
DRE#00578336



Patty Beggs
Owner/Realtor®
209.840.2293
DRE#01339347



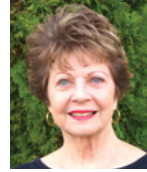
Michael Beggs
Broker Assoc./Realtor®
209.840.2294
DRE#01335568



Linda Willhite
Broker Assoc./Realtor®
209.985.2363
DRE#01063378



Ann Powell
GRI, ABR, RSPS
209-200-1692
DRE#01268655



Eleda Carlson
Owner/Realtor®
209-814-4123
DRE#00632516



Room to Roam

5 Bd/3 1/2 Bth, 2 Car Garage, Approx 4285sf, Approx 0.55 Acre, Bonus Rm, Large Living Rm, Brfst Bar, Pantry, Open Dining, Master Suite, Game Rm, Laundry Rm, Screened-in Porch, Deck, Green Belt Lot
19424 Ferretti Rd. 6-253 \$675,000
MLS# 20240686



Sparkling New Look!

2 Bd/2 1/2 Bath, 2 Level, Approx 1440sf, Living, Kitchen, New Countertops, Cabinetry & Appliances, Open Dining, Primary Suite, Remodeled Bthrms, Lower Level Bonus/2nd Bdrm w/Full Bth & Outside Access. Laundry W/D Included. Expansive Synthetic Deck. 2904 Jackson Mill Dr, 2-34 \$349,000 MLS# 20241433



Very Nice Chalet!

3 Bd/3 Bth, 2 Car Oversized Garage w/Shop, Office, & Above "Living Qtrs". Main House Approx 2100sf, 0.69 Acre, Great Rm w/FP, Brfst Bar, Island & Brfst Nook, Formal Dining, Sun Rm, Primary Bdrm, Family/Game Rm, Inside Laundry W/D Included. 12595 Cresthaven 4-428 \$459,000 MLS# 20241378



Well Maintained~Serene Views!

3 Bd/2 Bth, 2 Car Finished Garage, Great Rm w/FP Brick, Cathedral Ceiling, Skylights, Solid Surface Countertops, Large Brfst Bar, Open Dining, Primary Bed/Bth w/Walk-in Closet, Inside Laundry, Covered Deck, Outside Shed, Level Parking Area. 20701 Point View 4-261 \$495,000
MLS# 20241481



Luxurious - High Quality!

7 Bdrm/5 Bath, 2 Car Attached Finished Oversized Garage, 2 Levels, Approx 5248sf, 0.89 Acre. In-Law Quarters, Elevator, Den/Office, Library, Media Rm, Sauna, Enormous Deck, Panoramic Views, Outside Spa, Ample Parking and *So Much More!*
12881 Green Valley Cir. 3-395 \$799,000 MLS# 20241046



Spacious Home Near Marina!

3 Bd/3 Bth, 2 Car Oversized Garage, Generous Room Sizes, Great Rm w/Free Standing FP w/Stone, Brfst Bar, Open Dining w/ Buffet, Primary Suite, Separate Shower, Lower Level Bonus Rm w/Wood Stove, Full Bath, Inside Laundry W/D Included, Deck
19484 Pine Mountain Dr 1-413 \$498,888 MLS# 20241150



Comfort - Style - Convenience!

3 Bd/3Bth, 2 Car Spacious Garage, Single Level, Approx 1732sf, 0.41 Acre. Great Rm w/Heat Stove, Updated Kitchen, Brfst Bar, Open Dining, Extra Large Primary Bdrm, Wet Bar/Kitchenette, 2 Guest Bdrms, 1 w/Private Bath. Inside Laundry, w/d Included, Rear Deck. Fully Furnished. 13099 Mueller 2-158 \$415,000 MLS#20241486



Delightful Home!

3 Bd/2 Bth, 2 Car, Great Rm w/ Fire-place, Cathedral Ceiling, Open Modern Kitchen, Island, Brfst Bar, Open Dining, Inside Laundry Rm, Deck & Patio, Parking for RVs, Boats, Trailers, & More. Generac Generator. 22782 Rolling Woods, Yosemite Vista \$259,000 MLS# 20240448



Scenic Sierra Nevada Property!

77 Acres with 2 Bedroom, 2 Bath Manufactured Home powered by Solar and on a Well. Expansive Land, Self-Sustained Living. Perfect to Enjoy Privacy and Perfect for Nature Enthusiasts. 10715 Merrell Rd., \$456,000
MLS# 20240737



Extraordinary Views!

2 Bd/2 Bth, 2 Car Garage, Approx 2045sf. Bonus Rm, Wet Bar, Fireplace, Breakfast Bar, Pantry, Open Dining, Master Bd/Bth, Inside Laundry, W/D Included. Generous Decking to Enjoy the Views, Community Pool & Recreation Room. Backs up to Private Ranch Land. 22665 Prospect Hts, \$349,000 MLS# 20240551



Relaxing ~ Charming ~ Pretty

3 Bd/2 Bth/2 Levels, Approx 1357sf, 0.56 Acre, Great Rm, FP w/Stone Mantel, Cathedral Open Beam Ceiling, Brfst Bar, Pantry, Open Dining, Primary Bdrm w/Walk-in Closet, Laundry w/d Included. Whole House Generator, Circular Driveway, Spacious Deck. 12912 Green Valley Cir. 3-413 \$409,000 MLS# 20241289



Cozy & Peaceful!

3 Bd/2 Bth, 2 Car Oversized Finished Garage, 2 Levels, Approx 1584sf, 0.49 Acre, Living Rm w/FP Stone Surround, Cathedral Open Beam Ceiling, Ceiling Fans, Kitchen, Light Wood Style Floors, Open Dining, Primary Bdrm, Laundry w/d Included, Spacious Wrap Around Deck. 20883 Big Foot Ct., 4-68 \$399,900 MLS# 20240950



Pretty as a Picture!

3 Bd/ Bth, 2 Car Finished Garage w/Cabinets, Workbench, Plumbed, & Utility Sink, Approx 1910sf, 0.31 Acre, 1 Level, Greenbelt Lot. Great Rm w/FP, Brfst Bar, Pantry, Open Dining, Cathedral Ceilings, Skylights, Primary Suite, Laundry in Garage, w/d Included. Generous Deck. 19099 Raboul Ct, 2-274 \$489,500 MLS#20240987



Sweet & Cozy Cabin!

2 Bd/1 & 1/2 Bth, Approx 1092sf, 0.30 Acre, Updated Interior, Great Rm, FP, Cathedral Open Beam Ceiling, Large Angled Windows, Updated Kitchen, Brfst Bar, Open Dining, Large Bedrooms, Central Heat/Air, Inside Laundry, Large Deck. 19939 Pine Mountain Dr. 13-144 \$300,000
MLS# 20241485



Charming 3-Level Chalet

3 Bd/2.5 Bth with Game Room, Built-in Bar, Bunk Bed Area. Approx 1814sf, Fresh Exterior Paint, New Laminate Flooring, Lighted Ceiling Fans, Stainless Steel Appliances. Relax on the New Trex Deck w/Easy Access From Parking Area. Enjoy the Serene Greenbelt Views. 20863 McKinley 10-006 \$400,000



A Rare Find!

3 Bd/2 Bth, Oversized Garage w/ RV Parking, Single Level, Approx 1620sf, Great Room, FP w/Stone Mantel, Ceiling Fans, Skylights, Brfst Bar, New 5 Burner Range Top, Open Dining, Primary Bd/Bth w/Cedar Lined Walk-in Closet, Soaking Tub, Separate Shower, Covered Porch & Deck. 22857 Rolling Woods Dr, \$260,000
MLS#20241475



Perfect Location-Completely Remodeled

3 Bd/2 Bth, Over 1700 sqft. Main Floor Plus Loft & Office Space. Great Rm, Pellet Stove, Brfst Bar, Granite Countertop, Pantry, Primary Suite. Updated Interior, Quality Appointments, Quiet Side Street near Golf Course & Dunn Court Beach. 12583 Mount Jefferson, 5-66 \$448,888 MLS# 20241696



Charming-Convenient-Comfort!

3 Bd/2 Bth, Single-Level, 1,412sf w/Cathedral Pine Ceiling, Lighted Ceiling Fans, Central Heat/AC, Free Standing Wood Stove, Brfst Bar, Primary Bdrm w/Walk-in Closet. 2 Car Garage w/Cabinets, Workbench, Utility Sink & Storage, Plus Outdoor Shed. 12926 Green Valley Cir., 3-418, \$335,000 MLS# 20241036



PENDING!

Comfort and Charm!

4 Bd/3 Bth, Large Bonus Room, 2 Car Garage, Approx 2016sf on 0.73 Acre, Great Rm, Brfst Bar, Pantry, Open Dining, Primary Suite, Walk-in Closet, Separate Shower, Vanity, Inside Laundry W/D Included, Sun/Office Room, Enormous Deck, Fully Furnished. 19540 Chamberlain Ct, 1-5 \$454,900 MLS# 20241201



16 Acre Property Stunning Views

3Bd/3.5 Bth + Bonus Room, Redwood Deck (2022), & Multiple Heating Options. Lower Level: Bonus Room w/Private Entrance & Garage, New Roof, Whole-house Generator. Backs up to BLM Land. Close to Groveland, Pine Mountain Lake Golf Course, and Yosemite Nat'l Park 19807 Old Hwy 120, \$545,000 MLS# 20240895



WE ARE STILL BUSY SELLING IN THIS MARKET !!!
Call us to tell you what your home could sell for right now.

We Beautifully Stage Our Listings Presentation Matters !

Make Chris & Gina your 1st call!

YOSEMITE AREA REAL ESTATE

CHRIS H. LAKE
 DRE 00946632
209-768-6156
 chrishlake@gmail.com

GINA GIAMPIETRO HERNANDEZ
 DRE 01226555
408-506-6944
 GinaGHRealEstate@gmail.com

18687 MAIN ST. STE B2 GROVELAND

View listings at www.YosemiteAreaProperties.com

PAUL S. BUNT REAL ESTATE BROKER DRE 01221266

SWEET CABIN



NEW LISTING

19954 Ridgecrest Way U13 L340 \$339,000 A sweet cabin in beautiful Pine Mountain Lake a few blocks from the lake marina w/ level entry, in a wonderful setting, a true rustic style cabin w/ 2 fantastic upgrades- a metal roof, & Generac generator. Upgraded electrical panel, newer carpeting & has central heat&A/C, a wonderful covered walkway to entry & covered back deck. Walk into the great rm w/ a beautiful tall vaulted knotty pine open beam ceiling looking out to nature & a fabulous vaulted framed outdoor porch/patio for year round outdoor BBQ & enjoyment! This cute cabin has a brick hearth w/ wood burn stove, open concept & many windows lv rm, din area & kitch. Main lvl has 2 bdrm, hallway ba. Lwr lvl open space for add'l sleeping area, game/bonus rm, strg, laundry area, Ba with shower, & exterior door. The perfect simple family cabin for full or part time in Historic Groveland, just 35 miles from Yosemite & 12 miles down the hill from Lake Don Pedro.

ADORABLE CABIN



NEW LISTING

12623 Cresthaven Dr. U4 L434 \$325,000 Adorable rustic cabin tucked away in private setting in beautiful Pine Mountain Lake near Lake Lodge Beach & Playground. Enjoy the newly built expansive decks, both main level & upper balcony off the loft bedroom area. Level entry makes this a winner plus the true cabin style vaulted open beam ceilings in a natural landscape setting and cozy wood burning stove fireplace. Central HVAC & a PGE installed generator plug for backup generator option. Primary bedroom is on main level w/ bath & a sliding door out to deck patio. 2nd ba is on main level w/ a shower remodel in progress. Upstairs is a loft sleeping area w/ door to upper deck balcony. A brand new storage shed has been installed & there is plenty of parking on the paved driveway w/ a gentle slope. 1152 sf living space on .38 acre lot.

MOVE-IN READY



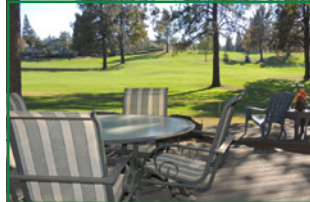
19570 Cottonwood \$369,000 2bd/2ba 1400sf 2 car gar. Single Level Mountain Home in Beautiful Pine Mountain Lake just 35 miles from Yosemite in Historic Groveland. Enjoy a getaway or full-time living, in this simple & spacious 2-3 bdrm (bonus sleeping rm is like having 3 bdrms) home w/2 car gar and lovely lg full house length gated back deck patio w/lovely natural tree views. Open views front & back ideal for star gazing at night. Roof is 5 years new & 1 year AC/HVAC. Vaulted open beam ceiling in lg living rm w/wd burning fp & deck patio access. Kitchen has stainless steel sink & stainless refrigerator. Electric stove/oven, microwave & dishwasher & small breakfast bar counter. The hall guest bath has tub shower & primary bedroom has a private fenced concrete patio area & bath w/tub shower also. Central Heating & A/C & oversized 2 car gar. HOA dues are currently \$264 per month & include beach & swimming pool access. Other amenities are an 18 hole golf course w/restaurant/bar & golf shop, driving range, Pickleball & Tennis Courts, Equestrian Center, Airport, Kids Playground Areas, Hiking Trails, Horseshoe Pits, Campground, & more. Just a 2 hour drive from Bay Area or Central Valley to your relaxing mountain home getaway.

LIVING THE DREAM



13064 Jackson Mill Dr. Unit7 Lot 77 \$429,000 1582 sf 3/2.5 2 car .26 Acre Living the Dream in Pine Mountain Lake! Enjoy a beautiful home for full-time living or even as a part-time vacation getaway and only a 2 hour drive from the Bay Area or Central Valley & 35 miles from Yosemite too! Boating, Fishing, Swimming, Golf, Pickleball and Tennis, Playgrounds, Hiking Trails and more. This freshly renovated single story home has a large oversized 2 car garage, 2 step access to main living areas, 3 bedrooms and 2 1/2 baths, Vaulted Ceilings, Brand New Stainless Appliances, Brand new Flooring & Carpeting, New light fixtures, new fixtures on doors & in bathrooms, Large Primary Bdrm with deck access & walk-in closet, formal dining plus breakfast nook area, central HVAC, wood burning stove brick hearth fireplace in Lvr, brand new back deck and newer roof & gutters in 2017. A Fantastic opportunity to buy a move-in mountain home. In PML Unit 7 Lot 77.

ON THE GOLF COURSE



19940 Pleasantview Dr U1 L163 \$599,000 2394 sq ft 5 bedrooms/ 4 baths 2 car Extraordinary Family Home by the Beach with Beautiful Fairway Views!!! Enjoy year round gorgeous green grass/golf course views of the 12th fairway of Pine Mountain Lake Golf Course from this wonderful large 2394 sf family home in beautiful Pine Mountain Lake gated community in Groveland, 35 miles from Yosemite. Just 2 blocks from Dunn Court Beach and a perfect home for full-time or vacation use! Move-in Ready w/5 Bedrooms and 4 Bathrooms! Each bedroom has direct bathroom access - an amazing floorplan! Great Room Concept with huge open kitchen/dining and living room, and a large open, vaulted ceiling family room facing golf course, rustic floor to ceiling stone wood burning fireplace, 2nd dining area or room for pool table, spacious back decks, large over sized 2 door 2 car garage. Tons of concrete parking, a quality built home nestled amongst beautiful mature Oak Trees and a sensational tranquil view of the golf course, must see !

BEAUTIFUL RUSTIC MOVE-IN READY



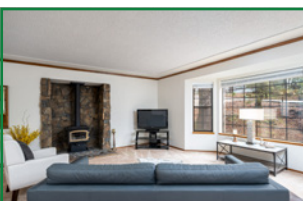
12505 Pine Brook \$499,000 3 bd 3 ba plus bonus room, 1 car , 1872 sf on .60 acre lot, A-Frame Style Cabin in Excellent Condition, Turn-Key Ready, Beautiful Stone Wood Burning Fireplace, Large open kitchen with Granite Counters, Breakfast Bar, Stainless Appliances, Pantry Closet, Knotty Wood Cabinets, Knotty Wood Tall Open Beam Ceilings, Floor to Ceiling Windows, Ceiling Fan Light, Gorgeous Engineered Hardwood Flooring, Built-in Book Cases, Stained Glass Accent Window, Lovely Updated Bathrooms, Primary Ba with electric heat fireplace, Soaking Tub, plus Tiled Shower w/Glass Door, Private Toilet Area, Tile Floors, Central HVAC, Indoor Laundry, Open Loft Sitting Area, Large wrap around front to side decks, Backyard private firepit area, Underhouse storage, Long paved driveway, Security System, Well Maintained Home.

MOVE-IN READY FAMILY CABIN



20808 Point View Dr. \$449,000 U4L170 2126 sf 4 bdr, 3 ba, bonus room, 2 car .36 acre, Large outdoor living deck area, beautiful tree and mountain views, Stainless appliances in kitchen, Breakfast Bar and Pass Through Window, Lvr w/ vaulted knotty wood open beam ceilings, wood burning fireplace stove on rustic stone hearth, large picture windows with sun screen shades, Newer 30 year comp roof in 2019, 2 year new 50 gal water heater, central heating and A/C, upgraded sep controlled HEPA Air filtration system, Spacious Primary Bedroom w/ 2 closets, patio deck access, Primary bath dual vanity sinks, shower/tub, Primary & guest bedroom plus guest bath on main level, 2 bdrm, bath, family room, laundry on lower level, Oversized 2 car garage w/ sink and shelves, Covered carport with lots of parking space, Lots of Paved Parking Available.

NEAR THE BEACH



19955 Pleasant View Dr. \$449,000 owner financing available, 2043 sf 3 Bd 3 Ba 2 car .32 acre lot, Spacious Lvr, Kitchen, Dining Areas , 2 car oversized finished garage with shelves, Kitchen with new granite counters, New backsplash and Lighting, Gas stove/oven, microwave, breakfast bar, Stainless appliances, 2 large pantry closets, Each bedroom has 2 large closets, Each bedroom has bathroom available, Indoor Laundry Area, Central Heating and A/C, Private back yard and deck area, Fenced Dog Run/Garden Yard, Under house storage, Lots of Paved Parking Area, 2 Blocks from Dunn Ct. Beach

COMMERCIAL PROPERTY



13051 Boitano Rd Commercial property OWNER FINANCING \$799,000 2.27ac Buildings total 9442sf Business Opportunity Potential!! Known as Down to Earth, locally owned & operated as a garden nursery supply source, landscape & paving construction business located at Ferretti & Boitano Roads, just outside of PML, is for sale. This commercial property location w/existing buildings, vast spacious grounds, structures, shop areas & garages, can accommodate a variety of uses for the next business entrepreneur. The property itself is for sale, not the business. Please contact Chris Lake at 209-768-6156 or Gina Hernandez at 408-506-6944 for additional information & a tour.

MOUNTAIN HOME RETREAT



SOLD

12557 Mt. Jefferson \$429,000 2223sf 2bd 2 1/2 ba plus lower level bonus floor, Great Location near beach and golf course, Every Room is super large and spacious, Huge open kitchen w/full length breakfast bar, Loads of Cabinet Storage plus Extra Large Pantry Closet, Wonderful front covered patio deck balcony, Very large back deck area too, 2 wood burning fireplaces with rustic stone hearths, Primary Bedroom with front balcony access, 2 closets, ba w/ dual sinks, wall to wall counter/cabinets, Wet bar, fireplace and 1/2 bath on lower level, Large garage storage capacity, Under house walk-in storage space, Long Concrete Driveway RV plus parking.

PML Organized Groups & Clubs

Contact the individuals below if you are interested in joining!

Aviation Association

Bob Mackey 1-408-373-2625

Crest Valley Firewise Community

Terre Passeur 1-209-962-5364

Friends of the Groveland Library

Virginia Richmond 1-209-962-6144

Friends of the Lake

Mike Gustafson 1-209-962-6336

Garden Club

Susan Dwyer 1-209-962-6265

Ladies Club

Pam King 1-831-601-8471
pam_king@sbcglobal.net

Men's Golf Club www.pmlmgc.com

Needle Crafts

Barbara Klahn 1-209-916-5420

Pickleball Club

Lee Carstens 1-415-215-5564

Pine Needlers Quilt Guild

Leslie Timmons 1-209-482-1406

PML Ladies 18 Hole Golf Club

Laura Kramer 1-209-840-0129

PML Niners

Stacie Brown 1-209-962-7397

PML Pool Wellness Club

Vickie Schultz
pmlpoolclubpresident@gmail.com

PML Safe Streets Campaign

Leslie Dudley 1-209-962-4911

PML Shooting Club

Scott Knupter 1-925-809-2850

PML Waterski & Wakeboard

Dean Floyd 1-408-915-8848

Racquet/Tennis Club

Ron Bass pmlatennis@gmail.com

Residents Club

Dick Faux 1-209-962-4617

ROOFBB

Audrey Prouse 1-209-962-4196
charity@roofbb.org

Rotary Club of Groveland

Pete Stevenson 1-209-814-1382

Southern Tuolumne County Historical Society (STCHS)

Harriet Codeglia 1-209-962-0300

Southern Valley Srs. Golf Group

Rich Robenseifner 1-707-486-9115

PML ORGANIZED CLUBS

STCHS NEWS

HARRIET CODEGLIA

In July, STCHS (Southern Tuolumne County Historical Society) resumed sponsoring talks in a long-established speaker series. Prior to the pandemic, the talks were held in the Community Hall downtown, but the virus and the fire ended that. STCHS decided to resume the talks, using the Groveland Community Resilience Center (CRC). We hosted three interesting talks, always free, in the summer and fall. We will resume in the Spring. Who should be our next speaker? Do you have a story to tell? Email hcodeglia@gmail.com with ideas.

The purpose of STCHS is to preserve the local history of Big Oak Flat and Groveland, and to educate the citizens and visitors about local, regional and natural history. The Speaker Program is a key part of that mission.

Our museum continues to offer a warm, dry escape with interesting exhibits and a bookstore stocked with books, souvenirs and gifts. The museum is open Friday, Saturday and Sunday from 10am until 2pm, unless it snows, or the power goes out.

STCHS owns the one story stone building (called the Wells Fargo Building) and the yellow house located in Big Oak Flat. Our goal is to preserve these historic buildings and we need your help. If you become a member of STCHS, your dues help us with the expenses of paint, cleanup, repairs and maintenance. We do much of the work ourselves, but volunteers are always needed.

In October, a wayward driver hit the stone building and damaged the stone sidewalk, scraped the brick wall, and damaged the hinges on the iron doors. This building was built in approximately 1851 and is a registered Historic Landmark. Fortunately, the driver had insurance, and we will work with the insurance company to pay for repairs.

Come to the museum, shop in our gift shop, and become a member. This is our community and history to be cherished. Check out our website at www.grovelandmuseum.org and our Facebook page. If you want to come in but cannot visit during our open hours, leave us a message at **1-209-962-0300** and we can arrange custom visiting hours. 🇺🇸

PML ORGANIZED CLUBS

GROVELAND ROTARY

MIRIAM MARTIN

Groveland Rotary welcomed our newest corporate member, Meghan Atkins at our December 11th luncheon meeting. Meghan works for GCSD in Administrative Services and is the granddaughter of Charlie Fields, a past president of the Groveland Rotary Club.

Be sure to mark your calendar for April 12 for another chance to dance the night away with the locally renowned Lack Family Band. We will be hosting our 22nd Annual Red, White & Blue Ball at Tuolumne Trails in honor of our Veterans and the Lack Family Band will be providing the entertainment, Black tie dress is optional for this fundraiser dinner and no host bar evening. Proceeds from this event will benefit a Veterans

organization. More info to follow.

We thank our community for all of the support that enables us to sponsor projects that make a difference. This month we are funding a much needed defibrillator for Southside Community Connections to use on the WAVE Bus that provides transportation for qualified individuals who are unable to drive due to recent surgery, illness or age. If you would like to participate in our work we welcome you to either join us a Friend of Rotary, helping with projects and events, or to join our club as a Rotarian, taking part in the direction and implementation of our endeavors. For more information, please contact Rotarian Greg Cramblit at **1-209-962-0607** or email gregcramblit@gmail.com. 🇺🇸

PML LADIES CLUB

PAM KING / MAE FRANCO

Ladies Club hosted their final lunch of the year at the Lake Lodge, appropriately celebrating Christmas. We enjoyed an amazing meal of wine poached pear salad, freshly baked sourdough bread, braised beef short ribs, pancetta penne, roasted vegetable and a delicious chocolate cherry bread pudding with whiskey maple sauce for dessert. Robin and her crew at Perfect Day Catering certainly spoiled us and helped us to usher in the holiday spirit!

A huge thank you to Evelyn Bealby for chairing our event and bringing her A game in decorating and making our affair so beautiful and festive. Most of our time was spent visiting and enjoying friends and our wonderful meal. To add to the holiday merriment we were led in singing Christmas carols by our very own Pincecone singer, Linelle Marshall. Thank you Linelle!

As we close out the year and reflect on all the fun and memories, on behalf of the 2024 Board – Pam, Mae, Paula, Susan and Dart – we would like to thank the membership for allowing us to serve you this past year. We look forward to what the incoming Board has in store for us next year.

We wish you all a very Happy 2025! See you in February!

Ladies Club meets the first Wednesday of each month (except January and July). If you are interested or would like more info, please contact Sharon Newell at 415-244-7515. Also check us out on Facebook at www.facebook.com/pmlldiesclub.



PML MEN'S GOLF CLUB

DAVE FERNANDEZ

VETERANS DAY/ TURKEY SHOOT

Finished off our 2024 season with two of our classic tournaments. While the weather could have been better for the Veterans tournament we had some die-hards who weathered the storm. 2024 was another great year for the PMLMGC. Congratulations to Gus Climent as our PMLMGC Player of the Year. From the members of the Board, Cheers to all of our winners, participants and to making 2025 an even better year.

VETERANS DAY

1st place- Bryan Eshagh, Jesse Contreras, Manny Youkhaneh, Mike Del Dotto

2nd place- Jon Rivera, Stan Bednarski, Larry Torres, Darren Hays

65 FOOT PUTTING CONTEST

1st place- Laura Kramer

Closest to the pin- #14

Ladies- Esperanza Lofstrand- 16'3"

Men- Randy Henderson- 10'4"

TURKEY SHOOT

Flight 1

1st place- Dave Berthold, Jeff Sera, Bud Roberts, Dave Gibson

2nd place- Colm Conefrey, Jay Fragomeli,

John Holmquist, Tom Geren

3rd place- John Wilkins, James Hadley, Chris Nicholl

4th place- Mark Christensen, Paul Schubring, Ted Bacci, Marc Allyn

Flight 2

1st place- Ted Toffey, Rod Raine, Joel Pluim, Mark Lofstrand

2nd place- Rich Martinez, Paul Kuhn, Joe Vautier, Bill Walker

3rd place- Dick Faux, Don Lacy, Dan O'Connor, John Lloyd

4th place- Barry Scales, Steve Bittick, Tom Borup, Ed Trejo

Closest to the pin

#3- Al Conceica 1'11"

#7- Rod Raine 9'6"

#14- Pat Hennigan 2'7"

#17- Joel Pluim 12'11"

TOURNAMENT TEE SELECTION

Many of our tournaments allow players to select what tees they will play from. It is important that players sign up for the correct tees. Any player can play from the Gold tees, regardless of their age or index, if they so choose. But only players that qualify may play from the Purple/Green tees. To qualify a player must be 70, or older, or have an index of 18.7, or higher. It is very difficult for the

Golf Shop to make tee changes at the last minute. Any player that plays from incorrect tees risks disqualification. Typically, one team member will sign up a 4-man or 2-man team, so it is imperative that that team member sign up their team from the correct tees.

WEBSITE TOURNAMENT SIGN UP

Please continue to use the website, pmlmgc.com, to sign up and pay for tournaments. Using the website for tournament sign up and payment makes it easier for the club and the Golf Shop to manage tournaments. Go to pmlmgc.com to see the tournament schedule.

JOIN THE MEN'S GOLF CLUB

Any male persons who are current property owners, their siblings, sons, nephews, sons-in-law, and PMLA employees are eligible to join the men's golf club. Go to pmlmgc.com and click on the button, Join the Club, to see the many benefits of club membership, as well as the ability to sign up on line. Applications are also available in the Golf Shop, or you can contact our Handicap/Membership Chair, Ted Toffey. Email Ted at handicap@pmlmgc.com, if you have any questions about club membership, or, if you're a current member, your NCGA handicap index. 🏌️

PML LADY NINERS

TAMMY TALOVICH

Quote of the month: *Always find opportunities to make someone smile, and to offer random acts of kindness in everyday life.*

If you would like to learn more about becoming a member of the Lady Niners contact Stacie Brown at happygem529@gmail.com. We play 9 holes on Thursday mornings; it only takes a few hours and is a great

opportunity to meet some awesome ladies!

NOVEMBER 7TH:

We had 9 players and there was no game – free play

NOVEMBER 14TH:

We had 4 players and there was no game – free play

Pars: #10 Susan Dwyer

NOVEMBER 21ST:

We had 5 players and there was no game – free play

Pars: #10 Nancy Brewster, #14 Tammy Talovich

NOVEMBER 28TH:

No golf, Happy Thanksgiving! 🍂

PINE NEEDLERS QUILT GUILD

SANDY SMITH

Happy New Year everyone...it's going to be a great one! Our wish for you is that it will be a healthy and happy one.

Pine Needlers Quilt Guild invites you to join us for a meeting in this new year of 2025 and see what we have to offer. Maybe you could learn to quilt, upgrade your skills, or as a quilter learn something new. Now is a wonderful opportunity.

We meet the 3rd Tuesday of every month. This month it is the 21st. Meeting starts at 10 a.m. under the Library. However at 9:30 we have a meet and greet to kind of catch up and set up the room for the meeting. So come early and join the fun.

In December our 2nd Annual Christmas Brunch/ornament exchange was a huge success! A good time was had by all. Wonderful food, a great surprise piano duet by Catherine and Anita, and beautiful hand made ornaments. Already looking forward to next year.

January's meeting will be fun and interesting. We are going to reveal our Snowflake mystery quilts, a Fat Quarter Challenge [which is always interesting] and a guest teacher. Its fun to learn something new. Karen Luby will be demonstrating how to make a rag quilt. These were popular many years ago and are making a comeback with new tools and ideas to make is easier and

simpler. Always great to learn new things.

Just to give you a sneak peek into our February meeting, Carol Willmon and Lynn Sigafoose will be giving a trunk show. I love trunk shows because its always amazing what is presented. So many beautiful quilts. We have many talented quilters in our guild, it is wonderful to watch.

Remember Guild meeting is at 10 a.m. on Tuesday January 21st, under the Library. Meet and greet at 9:30. If you want to sew with a group of fun ladies after the meeting, bring your lunch and a project and we will sew til 3.

If you have any questions call the President, Kris at **650 722-0307** or V.P. Leslie at **209 482-1406**. 🇺🇸

2025 NEW YEAR GARDEN CLUB CLIPPINGS

SANDY SMITH

We made it! We succeeded in polishing off a hot/cold/dry/ rainy 2024 with good natured grace. So, what if we didn't get to go on an autumn hayride at Tuolumne Trails camp because of the pelting rain. We made up for it with sharing delicious hobo stew, always popular s'mores, and Jerry spinning his colorful and informative tales of local history. I thought the very best part was sitting around the long camp table with 40 or so garden friends enjoying warm conversation along with laughter! True, 2024 was cold when we wanted warm, dark when we wanted sunny, wet when we wanted dry, and yes, dry when we wanted rain. But that's gardening for you!

But the Christmas luncheon made up for it all. We were sad to call for a last-minute switch of this beloved event (just like most of our other planned 2024 events) due to circumstances beyond our control, however

things worked out just fine. The folks at the spectacular new resort on HWY 120, Firefall Ranch stepped in and took care of us and our luncheon needs. This expansive resort meanders through serene meadowland and forested rolling hills near Yosemite. Check it out! The food was superb, and the banquet hall was grand and beautiful.

As usual, our holiday luncheon was visited by a fun and fanciful holiday spirit. Snowflake Sue charmed us all with her wit and dazzled us with her sparkling attire, proving once again that while diamonds are a girl's best friend, in a pinch, lots of rhinestones will do! Snowflake Sue recapped the past year and then introduced us to our incoming 2025 board members. Our event was perfect! So good to visit with everyone! And wow, the ever-popular Pinecone Singers came by and closed our gathering by singing us Christmas carols.

SO, one thing we in the PM Garden Club

remains committed to as garden enthusiasts is the concept of cultivation! Just as we cultivate our own gardens as well as our beloved Jail Garden, we cultivate learning how to better understand and enjoy this very specific and lovely Sierra Foothill environment. It goes without saying that we cultivate friendships, especially with our neighbors. We cultivate fun times, beautiful flowers, tasty snacks, interesting insects, and seeing new places, we cultivate learning new things and listening to stories told to us by those who share with us what they have learned and experienced in the garden.

Sounds fun? Want to learn more about Local foothill gardening? Join us! Let's be friends! (and have fun in the garden...) Questions? contact club president Susan Dwyer at smdwyer@sbcglobal.net. We meet most months, the 2nd Monday at 1:00 at the PM Lake Lodge. We can be reached at P.O. Box 167, Groveland, CA 95321 🇺🇸

PML LADIES 18 HOLE GOLF CLUB

PAULA PARISI

Pine Mountain Lake Ladies Golf Club would like to recognize and thank the following 2024 outgoing Officers and Board Members and welcome the new incoming, 2025 Officers and Board Members:

2024 Officers: Laura Kramer, Captain; Lisa Brown-Jimenez, Co-Captain; Paula Parisi, Secretary and Kathie Wood, Treasurer

2024 Board Members: Kitty Edgerton, Tournament Chair, Marcee Cress, Handicap Chair, and Sally Wrye, Social Sunshine.

2025 Officers: Paula Parisi, Captain; Sally Wrye, Co-Captain, Kitty Edgerton, Secretary, and Kathie Wood, Treasurer

2025 Board Members: Laura Kramer, Tournament Chair, Marcee Cress, Handicap Chair, and Tari Skelley, Social Sunshine

Recognition and thanks also go out to the following additional individuals who

helped chair tournaments and special events in 2024: Linda Johnson, Thelma Faux and Priscilla Park.

Here are the results of recent tournament Play:

NOVEMBER 14TH - THE GOOD, THE BAD & THE UGLY:

First Place: Marlene Drew, Sara Hancock, Paula Parisi & Priscilla Park – 115

Second Place: Marcee Cress, Anne Clark, Linda Johnson & Marilyn Scott – 116

NOVEMBER 21ST – TURKEY SHOOT (3 CLUBS & A PUTTER):

First Place: Jane Reynolds – 41

Second Place: Marilyn Scott – 38

Third Place: Priscilla Park – 37

Fourth Place: Kathy Egan – 36

Fifth Place: Marleen Drew – 35

Sixth Place: Tari Skelley – 35

Seventh Place: Sara Hancock – 34

Birdies: Elisa Hoppner, Laura Kramer & Linda Sarratt – Hole #10; Priscilla Park – Hole #17

DECEMBER 5TH – JINGLE BALLS

First Place: Jodie Awai, Anne Clark & Marlene Drew – 94

Second Place: Thelma Faux, Sue Perry, Sara Hancock & Priscilla Park – 97

Third Place: Laura Kramer, Helena McMillan, Paula Parisi & Tari Skelley – 98

Fourth Place: Marcee Cress, Lisa Brown-Jimenez, & Kitty Edgerton – 98

Fifth Place: Elisa Hoppner, Jodie Rodriguez & Linda Sarratt - 100

The Pine Mountain Lake Ladies Golf Club plays every Thursday and is open to all women residents and owners of property in the Pine Mountain Lake community. Our club would love to add some new members and have modified our bylaws to allow female family members of property owners to apply for membership. If you are interested in becoming a member, we can arrange for you to join us as a guest, so that you can meet and play with some members and see what our club is all about. If you're interested, please contact our PML Head Golf Professional, Mike Cook at **209-962-8620**. 🇺🇸

Foust
Heating & Air Conditioning

Reliable, Dedicated Service
Offering free estimates on upgrade or new systems

Quality You Can Trust
(209) 588-0207
fousthvac.com
Bonded & Insured
• License #841677

Mention this ad and receive 20% off service call

Voted best for 6 years

21026 080720adlv

ROOFBB

“CARING HEARTS- HELPING OTHERS”

AUDREY PROUSE

ROOFBB CHARITY REFLECTS ON 2024 AND LOOKS AHEAD TO 2025 WITH GRATITUDE AND EXCITEMENT

As we look back on an incredible year of service and giving, the only question left for 2025 is: How can we continue to build on the success of 2024? With gratitude, we reflect on all that ROOFBB ladies have accomplished, and we are filled with excitement for the year ahead.

A huge thank you to our amazing community who showed up time and time again to support our fundraising efforts. When you come to our events, you are also making an enormous difference in the lives of Groveland families and various projects around town.

Our success is built on the generosity and dedication of our amazing ROOFBB members. Some ladies have been members for decades while others have joined in the few months. We thank each and every one of you who add energy, knowledge, and dedication to our mission. These women are the heart of our organization, giving their time, energy, and passion to ensure that children have the resources they need to thrive, that community members are supported during difficult times, and that our community shines with care and kindness. From small acts of kindness to large-scale projects, ROOFBB continues to make a meaningful difference every day.

We are also incredibly fortunate to have a hardworking Board of Directors and Chair people that lead us to achieve our goals. A special thank you to Linda, Anne, Suzy, Sharon, Johanna, and Terre— your unwavering commitment to who we are and what we do ensures the ROOFBB charity runs smoothly and efficiently. It takes a great deal of your personal time and that is greatly appreciated by many in our community! This upcoming year, we are thrilled to announce the addition of Jen Toscano as the Director of Marketing & Communications. Jen brings a wealth of experience and enthusiasm to the role, and we know she is passionate in everything she does! She has already started to pitch in and relieve the work of others!!



We are also welcoming Brittany Miller as Historian. While she will focus on recording and preserving our legacy, she also will be a big help with social media posts and marketing! Welcome to the best organization, Jen and Brittany!

We are always looking for new volunteers to join our charity. If you're looking for a fun, fulfilling way to give back to the community of Groveland, we'd love to have you! Whether you have a little time or a lot, there are plenty of ways to get involved. To learn more about becoming a member or finding volunteer opportunities, visit us online on Instagram, Facebook, or Nextdoor. You can also apply for membership through our website: <https://charity.roofbb.org/join>.

Cheers to a bright, fulfilling 2025—may it be filled with good health, joy, and the opportunity to continue making a difference. Together, we can make our community a little better and a lot brighter!

If you know someone who is in need or are in need yourself, please contact us immediately and we'll see what we can do!!

DONATE!



CONTACT US! charity@roofbb.org

FOLLOW US! [@roofbbcharity](https://www.instagram.com/roofbbcharity) 🇺🇸

BOF/GROVELAND CHRISTMAS

BOF/GROVELAND CHRISTMAS COMMITTEE

It's been a season filled with Christmas cheer, made possible by the unwavering support of our dedicated volunteers and the generous donations from our community and local businesses. We are deeply grateful for your tremendous support. Together, we've brought our town to life with shared decorations that connect us to our traditions, fill us with pride and joy, and warmly welcome visitors to our town.

This year, we celebrated the unique Christmas traditions that define our beloved town. We honored Thyera Owings, a key figure in our town's Christmas history, and paid tribute to Kay Glaves of the Lions Club, who has led the decorating efforts for many years. The metal bows we hang on the lamp posts each year are in dedication to Kay. The candy canes that line the pathway up to Ranch Revived, Randi n' Kevin's, and The Grove are a nod to Dotty Davies's iconic candy canes that once adorned her yard in PML.

Our town's delightful charm included the stacked wood-round snowmen, thanks to the craftsmanship of Jeremi Silva. Earl Mawyer of Precision Paints refreshed our beautiful wreaths, adding a touch of elegance to our decorations. We are truly blessed and fortunate to have such an incredible community that generously shares their talents and time. Your contributions have made this Christmas season truly magical, and we are deeply grateful for your dedication and hard work.

As we take down the decorations, tag them, organize them, and pack them away for next year, we thank Terry Michaud for allowing

us to use his building again to break down and pack up the items before we move them into storage.

We are working on a long-term storage solution. We have a GoFundMe to raise money to store the decorations in a permanent spot. You can also support by writing a check and send it to:



As we prepare to take down the decorations, we need volunteers for the first week of January (weather permitting). If you're interested in lending a hand, please get in touch with Dawn Silva (408) 568-6969. And if you see us working, feel free to join us. We always appreciate spontaneous volunteer support. 🙌

OUR COMMUNITY

MOVE IT OR LOSE IT

KATHLEEN MALLOY

Dr., Dr., give me the news. I've got a bad case of an aging body. What might the Dr. say? Move it or Lose it!

You are cordially invited to join us as we move stretch and commune at Chair Yoga. All movements can be modified to your body. I promise I won't make you twist into a pretzel.

THIS is the time. THIS is the Year.

Quit moaning about your stiff back, sore joints, or (insert your ailment here) and Do Something.

You haven't tried everything, until you've tried Chair Yoga!

Mondays 10:45am - 11:45am. The Little House, Merrell Rd. Groveland. \$5.00 suggested donation. Over 90 years of age? Ask for the Liz special.

Questions? call Kathy @ 209-840-4777. 🙌



2024 THANKSGIVING DINNER "TOOK A VILLAGE"

PATTI BEAULIEU



Rick Whybra, Linelle Marshall and myself are humbled and so appreciative of the success of the 36th Annual Groveland Community Thanksgiving Dinner that was held on Thanksgiving Day at the Groveland Resilience Center. We're proud to be able to carry on this long-standing tradition to serve the greater Groveland community a wonderful, abundant holiday meal. Over 300 FREE meals were served and the generous donations from various local organizations and community members and the dedicated volunteers is what makes this event possible each year.

Many thanks to the following who volunteered to make this day happen: Alex Merriott & Reed; Allison Blattel, Asher & Logan; Amanda Klaahsen; Ann & Jay Jones; Ann Wood; Anny Olwin; Bob Swan; Brian Watson; Caree Hardcastle; Cavan Rose; Charlene and Corry Struve; Chris Spring; Clair Alves; David Ferraro; David Green; Dawn & Al Silva; Diane & Craig Filipowitz; Donna West; Dorothy Rosenbaum; Flora Siu; Gloria Marler; Hamish Watson; Hanna Sawyer; Jackie & Jim Sample; Jaydon Lee; Jim Dahms; John Huang; John Lee; Kathie & Rick Duarte; Karen Nessel; Karen Ahern; Kate Greene; Kitty Edgerton; Kym & Paul Purifoy Leon Liebster; Linda Kocher & Asher; Mark Stanley; Maureen & Steve Grier; Melanie McCutcheon; Melody Johnson; Mike Ireland; Robert Hervey; Ryan Niedens; Sammy West; Stefani Reichle; Syd & Rich Robenseifner; Thelma & Dick Faux; Tom Hernandez; Tonie & John Kiefer; Val Bruce; Virginia & Mike Gustafson; Yuris Daudish, and the students and Tenaya and the Groveland 4H Club for the table and wall decorations.

With the support of the community and volunteers, we look forward to continuing this holiday tradition for many years to come. 🍁



FOGL IN 2024

VIRGINIA RICHMOND – PRESIDENT

Friends of the Groveland Library celebrates our key accomplishments and contributions to the community during this past year. Among other activities:

- FOGL volunteers read to preschoolers at the library every Friday morning.
- We presented “Groveland Authors’ Day” with local authors presenting their books and describing their writing.
- We continued donating books to the Sonora jail and juvenile detention center and to Skyline Assisted Living.
- We donated \$3,000 to Tenaya elementary school to purchase additional books for classroom libraries and we contributed \$400 to Stuff the Bus to help purchase school supplies at the elementary school.
- Volunteers manage the Book Nook to raise money for the library and to supply our community with gently used books for all ages.
- Once again we donated \$10,000 to the County to pay for our 5th day staff and to buy books for the library.
- In March we provided books and volunteer readers for Read across America - Dr. Seuss Day at Tenaya elementary.
- Bookleggers volunteers read to children in grades PreK-2 to help instill love of reading early.
- At the end of school, we gave away books to all students in grades K-4 to take home.



Our team of Book Nook volunteers



Children pick out free books to take home



Local author Bill Ferraiolo describes his writing

- We donated books for the Toys for Tots Christmas project.

We invite you to join us in supporting literacy in our community and the

Groveland Library. Just send your name and email address with a check for \$25 to FOGL, PO Box 43, Groveland, 95321. 🇺🇸

WWW.PINEMOUNTAINLAKE.COM

PMLA OWNED LOTS FOR SALE

10/008	MCKINLEY WAY	\$1,000
2/047	GAMBLE STREET	PENDING
2/283	19364 FERRETTI ROAD	\$1,000
2/287	FERRETTI ROAD	\$1,000
2/305	FERRETTI RD	\$1,000
2/306	FERRETTI RD	\$1,000
2/448	12923 WELLS FARGO DRIVE	\$1,000
3/033	20480 FERRETTI ROAD	\$1,000
3/056	20505 ECHO COURT	\$1,000
3/463	20465 PINE MOUNTAIN DRIVE	\$1,000
6/113	19795 FERRETTI ROAD	\$1,000
6/235	FERRETTI ROAD	\$1,000
6/252	19426 FERRETTI ROAD	\$1,000
7/239	DIGGER PINE STREET	\$1,000
8/143	HILLHURST CIRCLE	\$1,000

FOR FURTHER INFORMATION REGARDING THESE PROPERTIES PLEASE CONTACT PMLA AT 1 (209) 962-8600

[HTTPS://WWW.PINEMOUNTAINLAKE.COM/PMLA-LOTS-FOR-SALE/](https://www.pinemountainlake.com/pmla-lots-for-sale/)



Pine Mountain Vacation Rentals

Looking to rent your home for short term rentals?
Not sure where to start or who to trust?

LET US DO THE WORK FOR YOU!

Locally owned and managed properties.

Rated Airbnb Superhost and VRBO Premier Host.

We use **DYNAMIC PRICING** with

Prompt Statements and Monthly payments
and very **COMPETITIVE RATES.**

Quick response time with

NO surprise fees.

Call Michael – Phone: (209) 840-2294

email: pinemountain48@gmail.com

www.pinemountainvacationrentals.net

VALADEZ TREE SERVICE LLC

- BRUSH CHIPPING
- HAZARD TREE
REMOVAL
- LAND CLEARING



- STORM CLEAN UP
- MASTICATION
- TREE TRIMMING/
PRUNING

CA LIC. # 1097030

24 HOUR EMERGENCY SERVICE

(209)206-8591

valadeztree@gmail.com

16843 Crestview Dr.

Sonora Ca 95370

VETERAN AND SENIOR DISCOUNT



PROPANE DISCOUNT PROGRAM

Suburban Propane – As the preferred provider of PML we are happy to provide an exclusive members only program to all residents.

Benefits include: Propane at a discounted rate, Tank rental at a discounted rate, Free basic tank installation, Easy payment options, 24/7 Tech support, Flexible delivery options, 24/7 live phone support. Contact our local staff for further details and current rates.

Suburban Propane Jamestown California

(209) 984-5283

1 (800) PROPANE



TWO GUYS PIZZA PIES

18955 Ferretti Rd, Groveland
(Just 1/2 Block Off Hwy 120)

Check out our weekday
LUNCH SPECIAL!

We ♥ Phone Orders

(209) 962-4897

\$1.00 OFF
ANY SIZE TWO GUYS
PIZZA OR CALZONE

One coupon per order, per visit. May not be combined with any other offer and/or coupon. Not valid on delivery.

PMLN 0125 Offer Expires 02/15/25

\$2.00 OFF
ANY LARGE OR EXTRA LARGE
TWO GUYS PIZZA

One coupon per order, per visit. May not be combined with any other offer and/or coupon. Not valid on delivery.

PMLN 0125 Offer Expires 02/15/25

GROVELAND GAL FRIDAY

**LET ME HELP
LIGHTEN YOUR
HOLIDAY STRESS
LOAD!**

**CALL ME FOR HELP
WITH SHOPPING,
RIDES, PET-CARE,
HOME CHECKS,
SENIOR CARE,
ORGANIZING OR...
YOU NAME IT!**

SHARON VOLPONI

209-962-6848

209-770-6277

Financial goals aren't achieved overnight.

As your needs evolve throughout your life, we'll strive to provide the products, solutions and experiences to help you achieve what's important to you.

Let's talk. Contact us today to learn more.



Jordan R Sergent
Financial Advisor
728 Mono Way
Sonora, CA 95370
209-213-7203



MKD-8652E-A AECSPAD 2/18/02

Save on the Bundle INTERNET, PHONE & TV from

**\$99.95
Install**



**Wired
to your
Home!**

**CABLE BROADBAND SERVICE
FOR GROVELAND**

Call (209) 962-6373 for details

18859 Microtronics Way Suite B13 Sonora, CA 95370 www.gosnc.com

Standard installation, equipment not included. Offer expires 12/31/24. Limited to one promotional offer at a time.



**Custom Boat Docks – Gangways
Kayak/Canoe Launches - Floats & Hardware**

209-845-2876

1398 East F St Oakdale, CA 95361

Independently owned Since 1982

www.hcidocks.com

COMMUNITY ORGANIZATIONS

*Contact the individuals/organizations below
if you are interested in joining!*

If you would like your community organization listed please send
your group's name, contact person, and phone number to
gmassist@pinemountainlake.com

CAMP TUOLUMNE TRAILS
Jerry Baker – 1.209.962.7916

FRIENDS OF THE GROVELAND LIBRARY
Michele Roberts – 1.209.962.4327

HELPING HANDS THRIFT STORE & FURNITURE BARN
Patti Beaulieu – 1.209.962.7402

SOUTHERN TUOLUMNE COUNTY HISTORICAL SOCIETY (STCHS)
Harriet Codeglia – 1.209.962.6270

SOUTHSIDE COMMUNITY CONNECTIONS
Nancy Reggio - 209-962-7303

VILLAGE ON THE HILL
1.209.962.6906 or info@villageonthehill.org

ENERGY SOLUTIONS

Generators, Solar & Batteries

REPRESENT

**Generac • Briggs-Stratton
Enphase • Sol-Ark • Omnimetrix**

- Service with installation agreement
- Fast response times - Located in PML
- All installations come with warranty service
 - Trained & certified by OEM
- All subs are local and licensed contractors with highest recommendations

LOCALLY OWNED & OPERATED



www.sol-training.com

(650) 681-9445

24 hr answering service

thuggett@sol-training.com

CA license #858377

MURRA'S TOTAL YARD MAINTENANCE



BRINGING VALUE FOR YOUR DOLLAR IN PML

- WEEDING
- LOT CLEARING
- SENIOR DISCOUNTS
- LEAF REMOVAL
- PLANTING
- TREE SKIRTING
- HAULING
- AND MORE

CALL JASON MURRA

209-352-3750

LIABILITY INSURED

CAMP TUOLUMNE TRAILS

DORI JONES

2025: NEW YEAR ~ SAME CHALLENGES

As we begin 2025, CampTuolumne Trails is looking ahead to summer when camp comes alive with campers from June through August. Each year, the cost of running camp increases -- just like everyone else is experiencing. To help buffer the financial burden of providing a unique camp experience for our campers with disabilities, CTT has launched a Sponsorship Campaign to solicit sponsors to help offset the significant summer shortfall. CTT cannot exist without broad public support.

Over the past month, CTT has received our first Sponsorships from three generous donors to help us continue providing a very special place, which our campers look forward to experiencing each summer:

- **THE RICHARD ELLIOT FAMILY FOUNDATION - WEEK 2: YOUNG ADULTS 18 AND OVER**

Every year, we welcome back old friends who have been enjoying camp for years and first-timers looking forward to a new experience. CTT is one of the very few camps that do not have an age limit.

Richard and Camella Elliot have been significant supporters for more than five years. Richard is world-renowned as arguably the best jazz saxophone player on the planet. The Elliots are known for their philanthropy. In 2021, Richard released the album *Authentic Life*, a reference, I was

told, to their passion for supporting great causes. We are thrilled to be considered one of those great causes.

- **CHICKEN RANCH TRIBAL COUNCIL - WEEK 3: CTT'S YOUTH CAMP.**

This is the part of our summer program that is reserved for our youngest campers. For many, this is their first overnight away from home. We welcome campers as young as seven.

While it is hard to miss the new casino in Jamestown, the Chicken Ranch Rancheria has quietly been giving back to the community. This year's sponsorship is the first engagement in what we hope will be a long partnership. We are honored that The Chicken Ranch tribal council has found Camp Tuolumne Trails worthy of their support.

- **DIPANJAN AND SHASHI DEB - WEEK 4: YOUNG ADULTS 18 AND OVER**

Much like Week 2, Week 4 is an adult camp. It tends to be attended by some of our more elderly campers (last year, we celebrated a 77-year birthday).

Dipanjani (DJ) is the CEO and co-founder of Francisco Partners, one of the most successful venture capital firms in the country. DJ has been a supporter of camp since we first met in 2007. DJ supports camp not only for our mission, but also for our efficiency. This year DJ and Shashi decided to concentrate their philanthropy to a few efficient organizations. We are very

proud that we made the cut.

This is a good start; however, CTT needs additional sponsorships and expanded funding sources. We ask that you consider donating to CTT. Our promise is to carefully leverage your donations to ensure another banner year for CTT's campers. Your support helps CTT in continuing its goal to be the most accommodating camp in the U.S. Your donations are greatly appreciated, and all contributions are tax-deductible. You can use this link to make donations on CTT's website <https://www.tuolumnetrails.org/donate/> or use this QR code.



Camp Tuolumne Trails' mission is devoted to helping those with disabilities and those who support them by providing an accommodating environment for healing, respite, education and recreation. If you'd like to find out more about CTT, take a tour, volunteer or learn more about donating and legacy giving, please call CTT at (209) 962-7534, email info@tuolumnetrails.org or visit: <http://www.tuolumnetrails.org>. Follow us on Facebook and Instagram to stay updated on camp happenings.

WWW.PINEMOUNTAINLAKE.COM

NICK CHASE
NC
PEST CONTROL



OUTSTANDING PEST CONTROL SERVICES

RESIDENTIAL & COMMERCIAL

209-591-0184

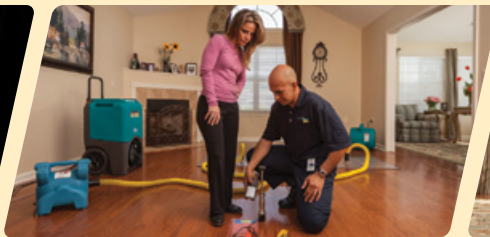


www.NickChasePestControl.com

\$25 DISCOUNT

Mention this ad for a discount on cleaning services.

Minimum charge applies.



DISASTER RESTORATION SERVICES • RESIDENTIAL AND COMMERCIAL CLEANING SERVICES

Carpet & Furniture Cleaning • Steam & Dry Cleaning • Deep Soil Extraction • Spot & Odor Removal • Hoarding Cleanup • Post Construction Cleanup
 24 Hour Emergency Service • Water Removal • Wet Carpet Care • Fire & Smoke Restoration • Vandalism Cleanup • Structure Drying • Sanitizing

ServiceMASTER Restore

*The clean you expect.
 The service you deserve.®*



Serving Tuolumne, Calaveras & Amador Counties
 ServiceMasterSierras@mlode.com • www.ServiceMasterSierras.com

209-532-1700

17330 High School Road
 Jamestown CA 95327



LINGLEY ENTERPRISES
SERVICE AND REPAIR CONTRACTOR
PLUMBING - ELECTRICAL - CARPENTRY
AFFORDABLE PRICING
WWW.LINGLEYENTERPRISES.COM
209 840 2654 LIC # 920143



- Launching
- Winterizing
- House Calls
- Dock Calls
- Service
- Repairs
- Storage
- Trailer Repair

209-962-4594
The Boat Doctor
 Paul Belluomini • P.O. Box 113 • Big Oak Flat, CA 95305

JOANNE SCOTT
 Independent Beauty Consultant

13166 Wells Fargo Drive-PO Box 1257
 Groveland CA 95321
 209-573-1415

Bernijo3@aol.com
 www.marykay.com/jbernasconi

God First, Family Second, Career Third

MARY KAY



FIREWOOD CUTTING

PML SLASH & COMPOST SITE
OAK AND CEDAR
 REQUIRES A \$20 PML WOOD CUTTING PERMIT

WOOD CUTTING PERMITS AVAILABLE AT THE MAINTENANCE FACILITY

PINE AND FIR
 AVAILABLE FOR FREE CUT & HAUL

FOR MORE INFORMATION PLEASE CONTACT MAINTENANCE AT
1 (209) 962-8612
 BETWEEN THE HOURS OF 7 AM TO 2:30 PM, M-F.

Give the Gift of Family Memories

FILM & VIDEO TRANSFER SERVICES TO DVD • USB FLASH DRIVE • CLOUD

Are you tired of binge watching Netflix or streaming content? Why not dust off your old Super 8 family movie films or VHS tapes and bring those golden memories back to life. Have a real family movie night!



- MEMORIAL SLIDESHOWS
- EVENT VIDEOS
- PRINT & SLIDE SCANNING
- AUDIO CASSETTE TRANSFER
- CD & DVD DUPLICATION
- PHOTO RESTORATION
- PHOTO BOOKS
- PHOTO PUZZLES • PHOTO GIFTS
- WHITE GLOVE SERVICE
- FREE PICK UP & DELIVERY



SEE OUR YELP REVIEWS 

DejaVu Video Services
 408-899-4407 • dejavuvideo123@gmail.com

MLK2025

KATHLEEN MALLOY

The term “Beloved Community” became popular when it was used by the Rev. Dr. Martin Luther King, Jr. in the 1960’s to describe society transformed to God’s dream for humanity. However, the term originated with a Californian, the son of British immigrants who settled in Grass Valley during the Gold Rush.

Dr. Josiah Royce (1855 – 1916) was educated in his family’s remote mining town school and then in San Francisco, Oakland, and Germany. He earned a PhD from Johns Hopkins. Royce began his teaching career at University of California at Berkeley, though the bulk of his teaching career was spent at Harvard. Among his more famous students were: TS Eliot, George Santayana, and the black philosopher, WEB DuBois.

Royce, a devout, yet critical, Christian wrote: “My life means nothing, either theoretically or practically, unless I am a member of a community.” Royce’s academic work, grounded in the history of the American

West, took a critical view of triumphant individualism. He was interested in the functioning of communities.

Dr. Royce believed the key to creating community among persons was loyalty. “Natural Communities,” he wrote, exhibited vicious or predatory loyalty; they tended toward the destruction of others’ causes and possibilities fueled by strident, oppositional loyalties. Royce also perceived a nobler type of loyalty calling it “loyalty to loyalty,” an adherence to higher universal ideals. Communities who foster this kind of loyalty he called “Genuine Communities” or “Communities of Grace.”

Royce’s philosophical work took a more practical turn after a series of family sorrows. He was deeply impacted by WWI. He turned his intellectual attention to addressing the war and the Church.

About Christianity, Royce noted that doctrines and creeds come and go, but the Church as community goes on. Sometimes, a church community may become a “Natural

Community” with conflict and abusive behavior because its loyalties are petty and privatized. However, a church community may become a “Community of Grace” if its loyalty is to the highest values. Royce called the perfect expression of Christian faith the “Beloved Community,” an ideal he thought we could never reach, but should aim for.

55 years ago, Rev. Dr. Martin Luther King, Jr. read Royce’s ideas about community and reflected upon the conditions in the world during his lifetime: national racism, the plight of the poor, the destructiveness of war, and the teachings of Jesus Christ. Dr. King reclaimed Royce’s idea of the “Beloved Community” not as unattainable ideal of the true Church, rather as the incarnate goal of living Christians. For King, the “Beloved Community” occurs here on earth and includes all human beings. It comes into existence when people embody the teachings of Jesus Christ – respecting all persons, creating well-being for one another, including one’s enemies. Amen. Soli Deo Gloria. (Glory to God Alone) 🇮🇳

ATTENTION NEW PML MEMBERS!

WELCOME to PML...We're glad you're here!

Once you have received your welcome letter from the Association you will have the information you need to log into the PML website (www.pinemountainlake.com)

Once there click on the **RESOURCES** tab & then on the **NEW MEMBER ORIENTATION** icon.

The New Member Orientation page is **JUST FOR YOU!**

Here you will find:

- Member Orientation Packet
 - o Information on the Official PML Facebook page
 - o Gate Access Guest Pass internet program information
 - o Fire Safety contact and information
 - o Board Meeting Dates and information
 - o Rules, Regulations and Procedural information
 - o Information on PML Committees and Clubs

- Assessment Information
- PML Fact Sheet
- Getting Connected in Groveland

And **MUCH MORE!**



We are known for our integrity and legendary customer service!

Produce Your Own Clean Power!

- Save \$\$\$ Every Month
- Federal Tax Credit available
- 5-Year Typical Payback



Your Local Solar Electric Company

License #892261 / Since 2002
16046A Via Este Rd., Sonora

Call Us For A Free Estimate
209-532-5925

Check our reviews at www.apssolarpower.com
and www.SolarReviews.com



HEADLEY'S TREE SERVICE

Tree Service Without the Headache.

WALTER HEADLEY

Owner / Operator
(209)316-5167

headleystreeservice.com
headleystreeservice209@gmail.com



**Sierra
HEAVY DUTY**
RV & TRUCK CENTER INC.



BUSINESS HOURS

Monday - Friday:
8:00am - 5:30pm
Saturday: 8:00am - 2:00pm
Sunday: CLOSED

Well Stocked Parts House:

For All of Your Heavy Duty Needs!

- Heavy Duty Brake Linings
- Baldwin & Fleetguard Filters
- Delo Oil
- LED Lights
- Air Brake Valves & Hoses
- CB Radios, Antennas & Accessories
- Logging & Dump Truck Parts
- Hydraulic Hose Shop

Full Service RV Repair Shop:

- Commercial House & Starting Batteries
- Full Service Chassis & Lube Center
- Electrical & Plumbing Repairs
- Interior & Exterior LED Lighting
- Complete Body Damage Repair Shop
- Solar Power Systems & Inverters
- Complete Detailing Services
- Warranty & Insurance Work Accepted

Mobile Service Available

18968 Waylon Way
Sonora CA 95370

Call or Email us to schedule an appointment today!

(209)-532-7994

EMERGENCY CONTACT: (209)-559-3840

Email: shop@sierraheavyduty.com

Visit Us Online: www.sierraheavyduty.com

Over 50 Years of Experience!



All Major Credit Cards Accepted.

OUR COMMUNITY

CREAM OF GARLIC SOUP

RECIPE PROVIDED BY TOM KNOTH
AND PAULA MARTELL

This recipe was created by Chef Susan Spicer and has been served for decades at her wonderful New Orleans French Quarter restaurant,



Bayona. It might be a diet buster, but it's a garlic lover's dream, and nothing beats this soup for warming your tummy on a cool winter night.

INGREDIENTS

- 3 cups onions, peeled and sliced (about 1 lb.)
- 1 cup garlic cloves, peeled but not chopped (about 4 heads)
- 2 tbsp. olive oil
- 1 tbsp. butter
- 1 tbsp. chopped fresh thyme leaves (or 1 tsp. dried)
- 3½ cups chicken broth
- 1 bouquet garni (6 parsley stems, 9 thyme sprigs, and 1 bay leaf tied together)
- 1 to 2 cups day old french bread, torn into half-inch pieces
- 1 tsp. salt
- ¼ tsp. pepper
- ½ cup half and half or heavy cream
- Croutons (optional)

DIRECTIONS

In a heavy-bottomed pot, sauté onions and garlic in butter and oil. Stir frequently over low heat until they turn a deep golden brown (about 45 minutes).

Add thyme, chicken broth, and bouquet garni and bring to a boil. Stir in bread cubes, salt, and pepper and simmer for 10 minutes, until bread is soft. Remove bouquet garni, let soup cool for about 10 minutes, then purée soup with an immersion blender, or in a food processor or blender (carefully!).

Pour into a pot, heat, and whisk in more chicken broth if too thick. Add half and half or cream to desired consistency. Season to taste with salt and pepper. Serve with croutons if desired. Makes 4 large servings.

Note: The "bouquet garni" items can be placed in a large tea strainer or wrapped up in cheesecloth and tied off with kitchen string. 🌱

WHAT'S HAPPENING AT THE LITTLE HOUSE? WE WANT YOUR IDEAS!

SAMANTHA WEST – THE LITTLE HOUSE SUPERVISOR

As we welcome a fresh chapter, The Little House is buzzing with excitement and possibilities. This beloved gathering spot is the heart of our community, offering a variety of classes, activities, and events that connect, inspire, and enrich lives. Now, we're looking ahead and inviting YOU to shape what's next.

REFLECTING ON RECENT HIGHLIGHTS

Last year was filled with memorable moments. From hands-on crafting workshops to lively music nights, and fitness classes that got us moving, The Little House offered something for everyone. Our Scrapbook Crop event sparked creativity, and our holiday festivities warmed hearts and brought smiles all around. But we're not stopping there!



DREAM WITH US

What classes, events, or activities would you like to see at The Little House? Whether it's a cooking series, gardening tutorials, game nights, or something entirely new, we're here to listen. Our mission is to provide opportunities that resonate with our community and bring us closer together.

HOW TO SHARE YOUR IDEAS

We've made it easy to share your thoughts and suggestions. Here are a few ways to get involved:

Stop By: Visit us at SCC's The Little House on Merrell Road. We'd love to chat with you!

Call Us: Reach out to our friendly staff at (209) 962-7303.

Email Us: Send your ideas to:
tlh@southsidecommunityconnections.org.

Survey: Keep an eye out for a community survey coming soon to your inbox if you are on our mailing list or on Social Media.

MARK YOUR CALENDARS

While we gather your input, don't forget to join us for upcoming events this January! Check out our schedule on southsidecommunityconnections.org and stay tuned for details on workshops, social gatherings, and fitness classes that kick off the new year.

The Little House thrives because of the vibrant people who walk through its doors. Help us make it even better by sharing your voice. Together, we can continue to make this special space a hub of community, learning, and joy. We can't wait to hear from you! 🌟

THE WAVE BUS: A LIFELINE FOR NITA AND HER MOM

BETH MARTIN – TRANSPORTATION COORDINATOR

For Nita Faulkner and her mother, Nettie, the WAVE bus has been more than just transportation; it's been a game-changer.

The WAVE has enabled Nita, who is wheelchair-bound, to stay independent, care for her mom, and keep medical appointments—all without the need for a car.

After losing her leg and undergoing cancer treatment several years ago, Nita moved to a senior community in Modesto, with easy access to her medical appointments. She moved her mother, who can't live alone, there

as well. But the housing was expensive – and meanwhile, her mother's home in Groveland sat empty.

"I found out about the WAVE when we were in Modesto," Nita said. "And I was so grateful. When I knew there was free, reliable transportation, we were able to move back to Groveland."

The WAVE provides free transportation from Groveland to Sonora and Modesto several times a week, for medical appointments, shopping and errands. WAVE will go as far as Fresno, Stockton, Pleasanton and Sacramento

for medical needs.

Now, Nita takes the WAVE once or twice a week. "The bus picks me up in my wheelchair at home and takes me to doctors appointments and shopping," she said. "The people on the bus are wonderful. We talk, laugh, and sometimes even have lunch together," she adds. "It's really opened things up for me. And it's a relief to know my mom can come too, because she's not able to go by herself."

To find out more about riding the WAVE or to register for a trip, call (209) 962-6952. 🇺🇸

TENAYA ELEMENTARY STUDENT OF THE MONTH

Second grader Mason Reis Fulfer is Tenaya Elementary School's Student of the Month. According to his teacher, Jennifer Smith, Mason exemplifies outstanding character traits that make him an exceptional member of our school community. He is known for his kindness and respectfulness towards both peers and teachers, always ready with a smile and helping hand. Mason's dedication as a hard worker is evident in everything he does, consistently putting forth his best effort. His ability to listen attentively and follow directions ensures his success in the classroom and serves as a model for others. We are proud to have Mason, who contributes positively to our learning environment.

Mason is the son of Melanie Fulfer of Groveland and Colton Davis of Sonora. 🇺🇸



SOUTHSIDE COMMUNITY CONNECTIONS IN 2025

NANCY A. REGGIO – EXECUTIVE DIRECTOR

The new year is approaching, and with it comes the perfect moment to reflect on the year gone by and dream big for the one ahead! As we look back on 2024, we ask ourselves: *Was it a year of growth and fulfillment? Did we reach our goals? What new opportunities await us in 2025?*

For me, joining Southside Community Connections last January was a life-changing experience. It's been a year of discovery, growth, and connection. I've learned new skills, rediscovered old ones, forged meaningful relationships, and deepened my appreciation for this vibrant and caring community. Being part of the SCC family has been an honor, and I'm thrilled to continue this journey with all of you in 2025!

Looking ahead, we have ambitious and exciting plans for SCC. We're ramping up our outreach to ensure everyone in our community knows about the life-enhancing programs we offer—like *Helping Hands* and *Friendly Faces*, where dedicated volunteers provide in-home support to residents.

Our transportation services, **WAVE** and **WHEELS**, saw remarkable growth this year, and we can't wait to expand these programs further in 2025. Plus, we'll be rolling out new offerings at *The Little House*—stay tuned for announcements!

None of this would be possible without you—our incredible supporters. Your donations of time and money fuel our mission and make a tangible difference in countless lives. Thank you for believing in SCC and for sharing our vision for a stronger, more connected community.

As we welcome the new year, keep an eye out for updates on our fresh, innovative programs launching in January. Together, let's make 2025 a year to remember!

Wishing you all a joyful holiday season and a Happy New Year!

Warm regards,
Nancy A. Reggio
209-962-7303 📞

PAINTING & CONSTRUCTION



LIC #795233

PAINTING – EXTERIOR/INTERIOR • DECK REPAIRS • WOOD REPAIRS • REMODELS

Bay Cal Construction

209.962.4777

www.baycal.com
email: davec@baycal.com




FREE ESTIMATES

JACK IS BACK!!!



Call your local Pro!

CELL
209-678-8915

License #313926
Since 1975

Jack Proctor

Heating &
Air Conditioning

- Complete commercial & residential services
- Service & repair - all makes and models
- Heating & ventilation
- Heat pump specialist
- Air conditioning troubleshooting expert
- Installation and remodeling
- Upgrading & energy efficiency
- Bonded & Insured

*Before replacing your unit, ask us for a 2nd opinion.
Chances are, we CAN repair it!*

Pest Control

- Ants, spiders, mice, wasps, earwigs, etc.
- Fast service, great prices
- Squirrel and bat Exclusion
- Termite Inspections

- Weed Control
- Poison Oak
- Star Thistle

962-5710

800-464-3772

Free estimates



Foothill-Sierra
PEST CONTROL

Since 1977

HELPING HANDS HAPPENINGS

PATTI BEAULIEU

Happy New Year to everyone! As we begin a new year, many of us are reflective of the past year. 2024 was another very successful year for Helping Hands, tempered by the passing of one of our founders and our 'crown jewel', Hanna Bodle. We were so moved, but not surprised, to see the amount of community members at the beautiful memorial service held for her at Tuolumne Trails. She was a long-time member of this community and held a special place in the hearts of every one of us that had to honor to know her.

We made a necessary major change to our hours in January of 2024. Due to staffing and revenue issues, we decided to be closed on Tuesdays, as well as Mondays. Of course, we couldn't be without our Senior Discount Day, so we just moved that to Wednesday. Fortunately, the community and volunteers have adjusted to this change and things are moving along smoothly with Wednesday to Saturday open days at the Thrift Store and Fridays and Saturdays at the Furniture Barn.

We continue to receive very generous donations and are able to pass this on to our shoppers by way of weekly sales and, of course, to our community with the financial support we continue to give to the schools, teachers, local organizations, events and causes, Food Bank, and others, just as we have for 42 years. Remember, YOUR donations go back to YOUR community. Because of YOUR donations and purchases, we look forward to another prosperous year in 2025.

There are always 3 departments on sale each week, so follow us on Facebook at Helping Hands Thrift Store and Furniture Barn of Groveland, our web page at Helpinghandsofgroveland.com or any of the local Facebook Buy and Sell pages for what's on sell that week. We also publish our sales for the week in the Chamber's Yosemite Weekly, which details ALL the local events for the coming week, in addition to those planned months in advance. Email pepp@yosemitechamber.org to get this valuable newsletter emailed to you each Friday. 🌲

Licensed since 1987

Michael J's Painting
CCL# 510643

www.pmlpainter.com

209 599 4335

text or call anytime
AIRBNB Friendly
Extremely Handy

TMC CONSTRUCTION
 License # 717300
 Insured
(209) 962-6938

Brushing • Log Removal
Mastication

Hazardous Tree Removal & Pruning
Excavation

Site Prep, Engineered Septic, Culverts,
 French drains, Retaining walls,
 Hauling, Post hole digging,
 Under ground work,
 Concrete work

We can help with your grant.
Skid Steer and Dump truck service
Reasonal Rates • Free Estimates



EMBRACING 2025 WITH FAITH AND PURPOSE

PASTOR BOB KANDELS

As we step into January 2025, the season of fresh starts is here. Fitness centers resemble Christmas Eve services, brimming with hopeful faces and new resolutions. Like many, I wish to anticipate what the year will bring, convincing myself that I can maintain control. Yet, the truth is, control is not entirely in my hands. While planning is essential, we must recognize our limitations and surrender to God's will.

As I prepare this reflection in December 2024, I am reminded of the importance of spiritual trust. Ministry, at its core, is about introducing Jesus to those seeking Him. Our role is not one of control but of service. As the parable in Luke 12:16-21 warns, human plans can be upended at any moment. The farmer who planned for years of ease was reminded by God that life is fragile. Jesus continues in Luke 12:22-34, urging us not to worry, for control ultimately belongs to God.

At Gateway Community Church, our mission is to serve and guide our mountain community to Jesus Christ through worship, prayer, and discipleship. This year, I invite you to join this transformative journey. Opportunities to connect abound—our Friday Food Distribution, small groups for all ages, Children's Worship Ministry, and Sunday night volleyball at Tioga High School. Details can be found on our website: grovelandefc.com.

I cannot predict every detail of what 2025 holds but what I can affirm is that Jesus is "the way, the truth, and the life" (John 14:6). Discover more at any local Groveland Christian church. We at Gateway Community Church welcome you to worship with us every Sunday at 10:00 a.m. Come as you are and let us walk this path of faith together.

In Christ Service
Pastor Bob Kandels 🙏



Deck Plans / Additions / New Houses
Site Plans / Surveying / Mergers
209-532-5173 www.landstruc.com

Ken's Asphalt

Lic. 708310

Grading • Paving • Chip Seal • Road Oil

Seal & Slurry Coatings • Crafcro Hot Rubberized Crack Sealer
Driveways • Private Roads • Subdivisions

DOING
BUSINESS
SINCE
1985

DRAINAGE PROBLEMS?

We have the Solution!

Erosion Control • Riprap (6-12" Rock) • Asphalt Curbing • Base Rock

"Just Pave It"

Complete Concrete Services

- Stamped Concrete and Colored Concrete
- Stained Concrete
- Cleaning & Sealing
- Retaining Walls

- Driveways
- Walkways
- RV Pads
- Patios

532-0800 • 962-5644 • 768-7395 Cell



Waters Plumbing Heating & Air

FAST SAME DAY SERVICE* **All work 100% Guaranteed!**

*IN MOST CASES




Contractors License #463958
www.watersplumbing.com

"I want you to know that our technicians will give you a price before we start the job." —Wayne Waters




Groveland (209) 533-1010

MOORE BROS RECYCLING NOTICE

WE HAVE DROP-OFF RECYCLING!!

All residents and visitors are asked to source separate their recyclable materials. There are designated bins located at our office located at 11300 Wards Ferry Rd. in Big Oak Flat where you may drop off your recyclable materials anytime **Monday through Saturday 8am to 5pm** (weather permitting). CLOSED SUNDAYS and major holidays.

Acceptable materials include:

- Aluminum beverage containers, tin cans, glass bottles and jars (all colors)
- #1 Plastic (bottle form only) ****#1 clear fruit/veggie, sandwich or salad clam shell type containers are NOT allowed****
- #2 Plastic (bottle form only) ****#2 colored plastic coffee containers are NOT allowed****
- **ALL CONTAINERS MUST BE RINSED AND FREE OF LIDS AND CAPS**

We also accept Mixed Paper, newspaper, magazines, catalogs, junk mail, paperback books & shredded paper which can all be put in the same bin. NO WRAPPING PAPER ALLOWED

CARDBOARD BIN ACCEPTABLE MATERIALS INCLUDE:

Cardboard, Carton Board such as cereal and cracker and soda/beer boxes, etc. are also accepted and can be placed in the cardboard bin with the cardboard. THESE ITEMS NEED TO BE FLATTENED OR BROKEN DOWN AND ANY PACKAGING MATERIALS OR TAPE REMOVED.

IF THE CARDBOARD BIN IS FULL OR YOU HAVE A LARGE LOAD OF CARDBOARD TO RECYCLE, we ask you to take it to our shop location at 17641 Yates St. in Big Oak Flat where we still maintain a 50 yard cardboard recycle box.

PLEASE DO NOT THROW PLASTIC BAGS OF RECYCLABLES INTO THE BINS.



CHECK OUT YOUR GROVELAND LIBRARY

THE GROVELAND LIBRARY IS OPEN
TUESDAY - THURSDAY — 11AM-5PM
FRIDAY & SATURDAY — 10AM-2PM



BOOK NOOK
USED BOOK SALE
SATURDAYS
10AM-1PM

PRE-SCHOOL STORY TIME FRIDAYS AT 10:30AM

Visit the Library for a great selection of books, magazines, newspapers, CDs, & DVDs.
Also computers and free Wi-Fi!

CLASSIFIED ADS

COMMERCIAL SPACE FOR LEASE

COMMERCIAL SPACE FOR LEASE!

18717 Hwy 120, Groveland. Approximately 1600 square feet of building space, located downtown with propane heat, one ADA bathroom perfect for retail, food service, professional office, medical etc. Rent \$1,650.00 Deposit \$1,700.00. Contact agent **650-520-1022**

HELP WANTED

PMLA IS HIRING

PMLA is looking for qualified candidates for several job openings. Apply online at www.PineMountainLake.com

RENTALS WANTED

EXCELLENT TENANTS

w/excellent credit and rental history looking for homes to rent. Owner approves tenant before placement. Call *Yosemite Region Resorts* **209-962-1111**

SERVICES

RONNING ROOFING

Call Joe for all your Roofing and Gutter needs. Licensed, Bonded, and Insured. License # 976739 **209-962-6842**

HOUSE CLEANING

We are mature/experienced PML residents.
Steve **925-595-3362**
Carla **925-639-4929**.

BIG JOHN HANDYMAN SERVICES

Yard Maintenance, House Maintenance and moving households Call John **962-6163**

GET YOUR AD SEEN!



Place a photo of your item for sale for just \$10. Call 1-209-962-0613

THE PML NEWS IS NOW DIGITAL!

Don't miss your chance to stay informed and connected with the all-new monthly PML News Magazine – now delivered electronically!

HOW TO SUBSCRIBE:

- **Scan the QR Code below to sign up instantly.**
- **Visit our official website and click on the “Sign up for PML News Magazine” link on the homepage.**



**Be part of the future of PML communication!
Subscribe today and never miss an issue.**